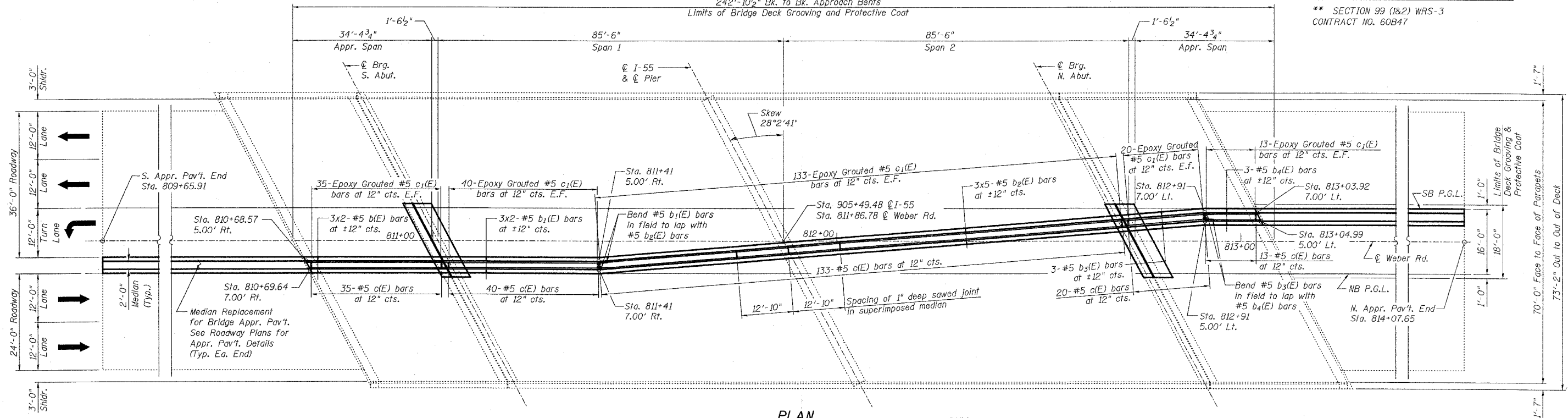


STATE OF ILLINOIS  
DEPARTMENT OF TRANSPORTATION

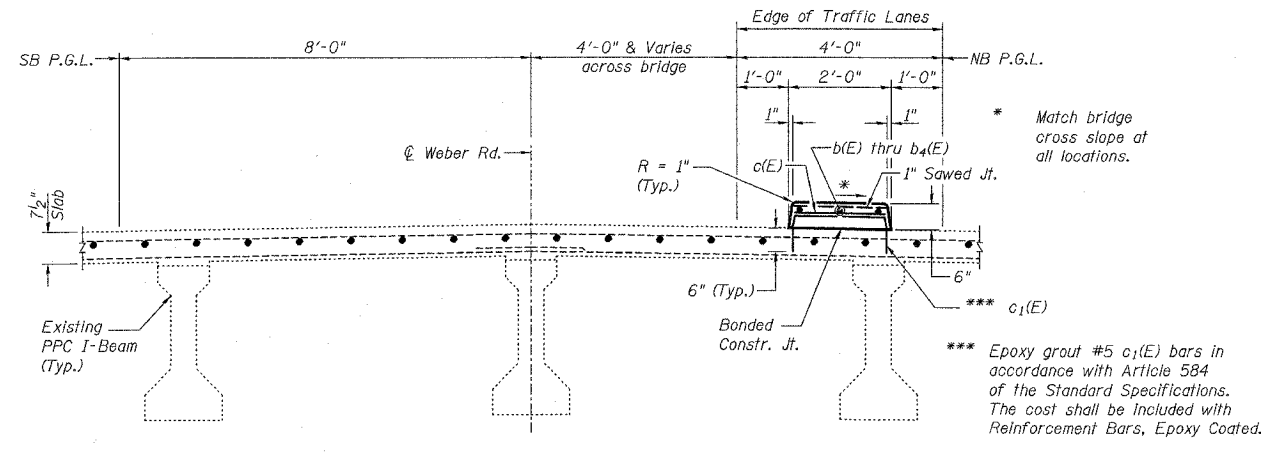
242'-10 1/2" Bk. to Bk. Approach Bents  
Limits of Bridge Deck Grooving and Protective Coat

ROUTE NO.	SECTION	COUNTY	TOTAL SHEETS	SHEET NO.
FAI 55	**	WILL	305	185
FED. ROAD DIST. NO. 7	ILLINOIS	FED. AID PROJECT		

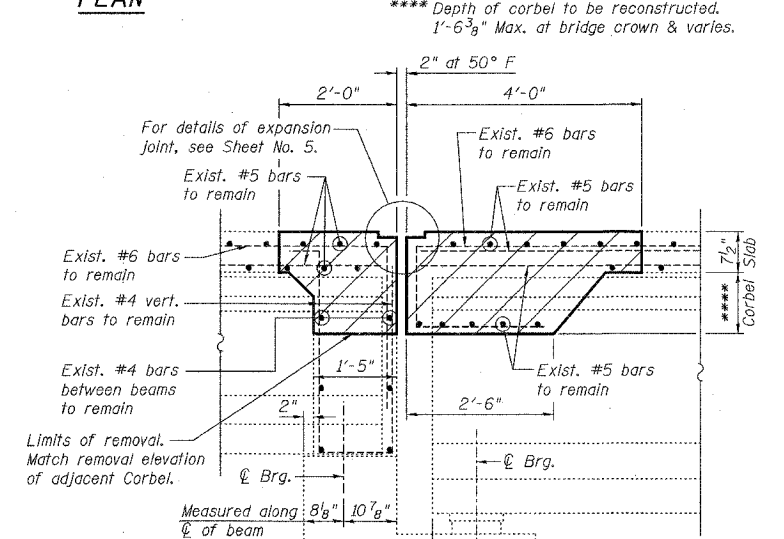
\*\* SECTION 99 (1&2) WRS-3  
CONTRACT NO. 60B47



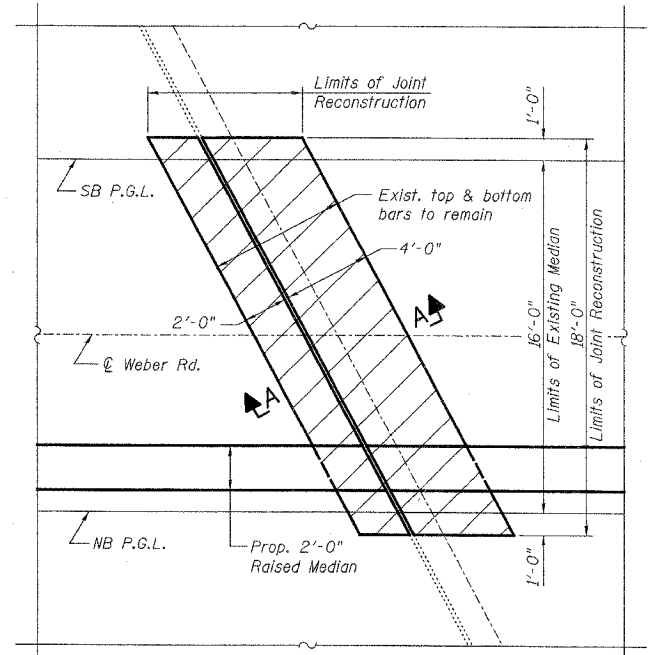
PLAN



MEDIAN DETAIL  
(Looking Upstation)



SECTION A-A  
(Dimensions at Rt. L's)

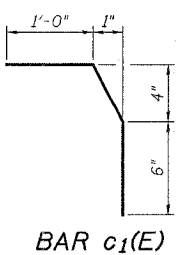


PLAN OF JOINT RECONSTRUCTION  
(South Abutment shown, North Abutment similar.)

- Notes:
1. Min. Lap shall be 2'-2" for #5 bars.
  2. Reinforcement bars designated (E) shall be epoxy coated.
  3. Bars indicated thus 3 x 2-#5 etc. indicates 3 line of bars with 2 lengths per line.
  4. Work this sheet with Sheet No. 5.

MEDIAN BILL OF MATERIAL

Bar	No.	Size	Length	Shape	
b(E)	6	#5	18'-0"	—	
b <sub>1</sub> (E)	6	#5	21'-8"	—	
b <sub>2</sub> (E)	15	#5	28'-1"	—	
b <sub>3</sub> (E)	3	#5	22'-10"	—	
b <sub>4</sub> (E)	3	#5	14'-4"	—	
c(E)	241	#5	1'-9"	—	
c <sub>1</sub> (E)	482	#5	1'-10"	—	
Reinforcement Bars, Epoxy Coated				Pound	2,170
Concrete Superstructure				Cu. Yd.	25.4
Bridge Deck Grooving				Sq. Yd.	381
Protective Coat				Sq. Yd.	513



BAR c<sub>1</sub>(E)

LEGEND

Hatched area to be removed and reconstructed. Existing reinforcement shall be cleaned and incorporated into new construction.

MEDIAN DETAILS  
WEBER ROAD OVER I-55  
SECTION 99 (1&2) WRS-3  
WILL COUNTY  
STA. 811+86.78  
STRUCTURE NO. 099-0281



2/18/2007 8:47:46 AM G:\11817A\StructCadd\Prj-Final\WEBER\Title Submittal to IDOT BO\_022307\022306-60B47-000-004.dgn

DESIGNED	S.CHELBIAN
CHECKED	J.GRAINAWI
DRAWN	S.CHELBIAN
CHECKED	J.GRAINAWI

Date: 2/23/2007