

STATE OF ILLINOIS  
DEPARTMENT OF TRANSPORTATION

ROUTE NO.	SECTION	COUNTY	TOTAL SHEETS	SHEET NO.
FAI 55	**	WILL	305	188
SHEET NO. 7				
7 SHEETS				

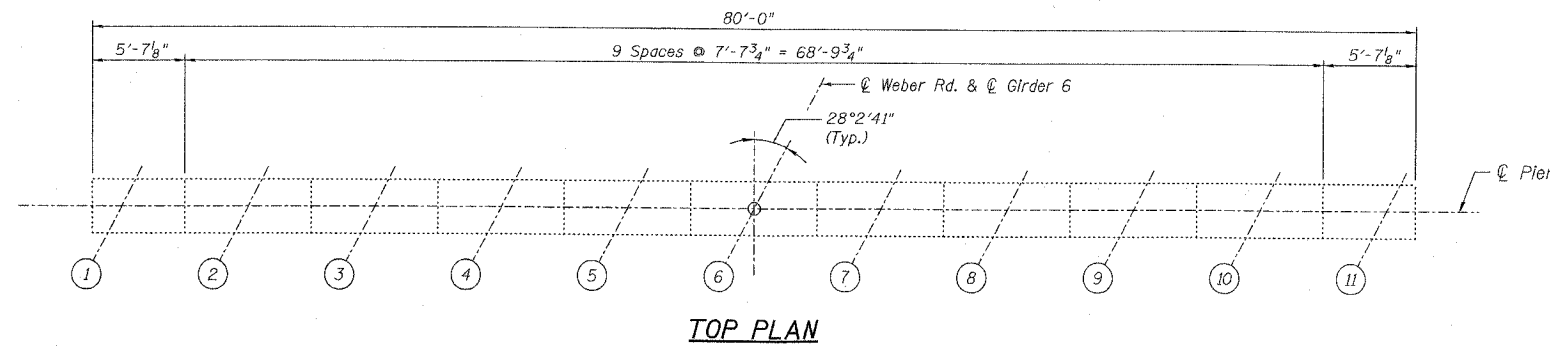
\*\* SECTION 99 (18.2) WRS-3  
CONTRACT NO. 60B47

**BILL OF MATERIAL**

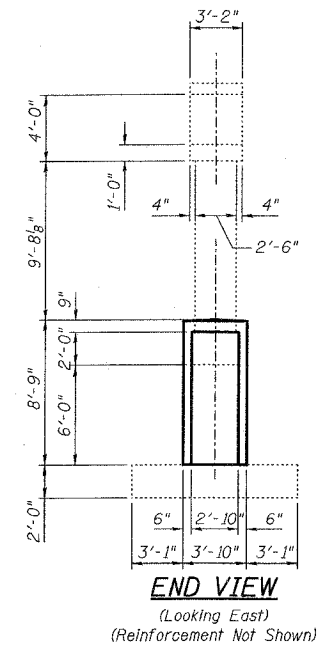
Bar	No.	Size	Length	Shape
d(E)	64	#6	1'-3"	—
d <sub>1</sub> (E)	138	#4	9'-4"	—
d <sub>2</sub> (E)	138	#4	2'-9"	—
h(E)	36	#4	23'-10"	—
h <sub>1</sub> (E)	4	#4	9'-11"	—
s(E)	52	#5	7'-11"	—
Item		Unit	Total	
Concrete Structures		Cu. Yd.	26.5	
Reinforcing Bars, Epoxy Coated		Pound	2,270	

**Notes:**

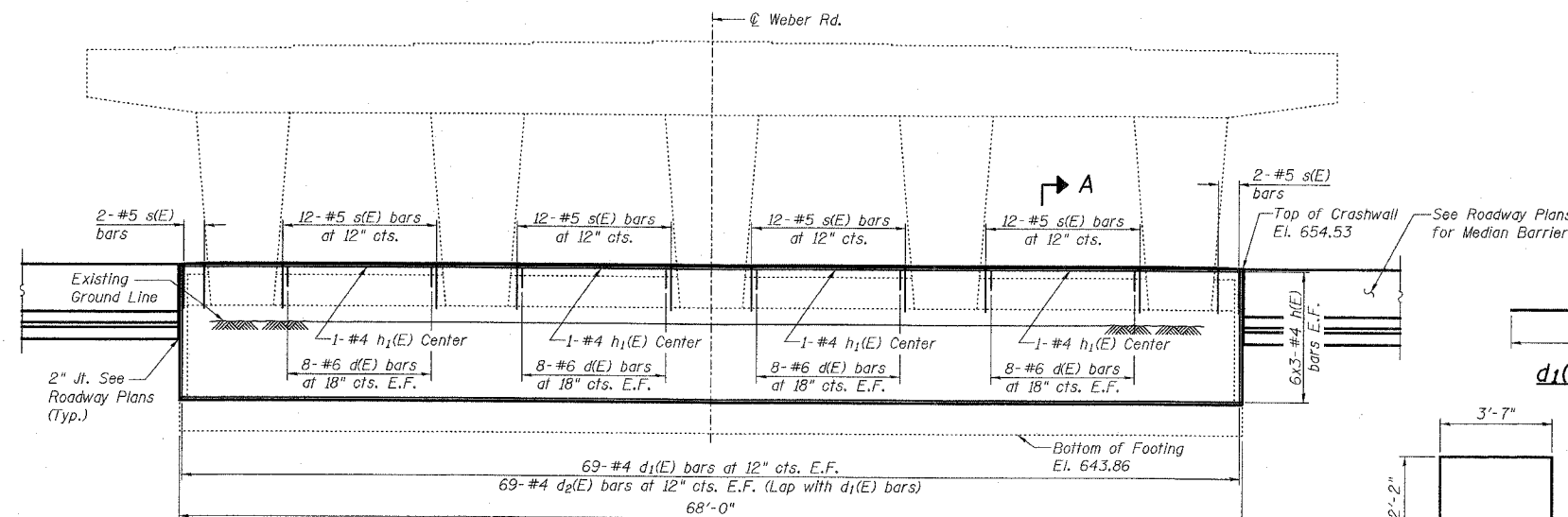
1. Reinforcement designated "(E)" shall be epoxy coated.
2. Drill and grout #6 d(E), #4 d<sub>1</sub>(E), & #4 d<sub>2</sub>(E) in 9" min. drilled holes according to Section 584 of the Standard Specifications. Method and grout are subject to the approval of the Engineer. Cost included with Reinforcing Bars, Epoxy Coated.
3. Bars indicated thus 6 x 3 - #4 etc. indicates 6 lines of bars with 3 lengths per line.
4. Minimum lap shall be 1'-8" for #4 bars & 2'-2" for #5 bars.



**TOP PLAN**

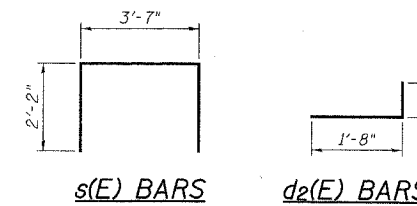


**END VIEW**  
(Looking East)  
(Reinforcement Not Shown)



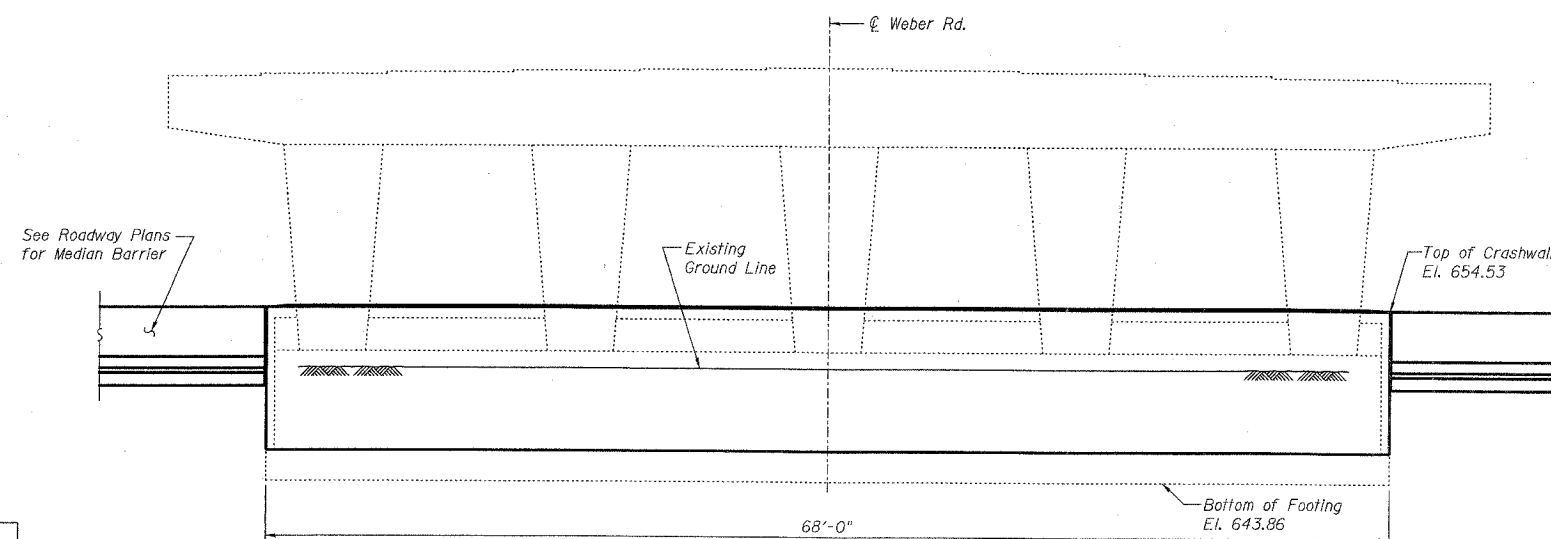
**PIER ELEVATION**  
(Looking North)  
(Reinforcement Shown)

**d<sub>1</sub>(E) BARS**

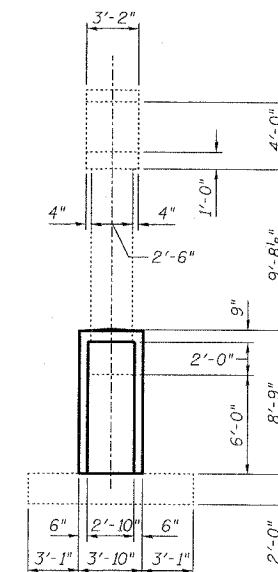


**s(E) BARS**

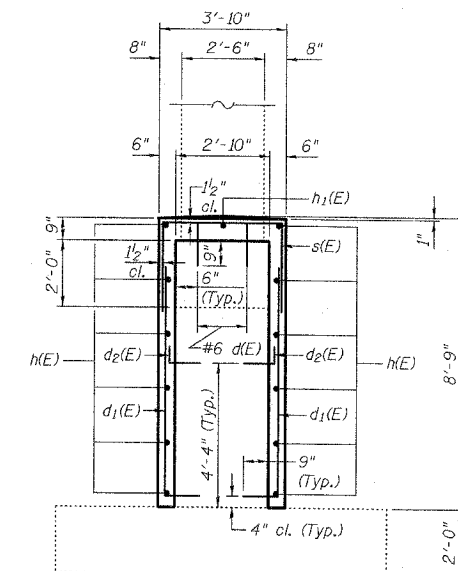
**d<sub>2</sub>(E) BARS**



**PIER ELEVATION**  
(Looking South)  
(Reinforcement Not Shown)



**END VIEW**  
(Looking West)  
(Reinforcement Not Shown)



**SECTION A-A**

PIER REPAIR DETAILS  
WEBER ROAD OVER I-55  
SECTION 99 (18.2) WRS-3  
WILL COUNTY  
STA. 811+86.78  
STRUCTURE NO. 099-0281



DESIGNED	S.CHELBIAN
CHECKED	J.GRAINAWI
DRAWN	S.CHELBIAN
CHECKED	J.GRAINAWI

Date: 2/23/2007