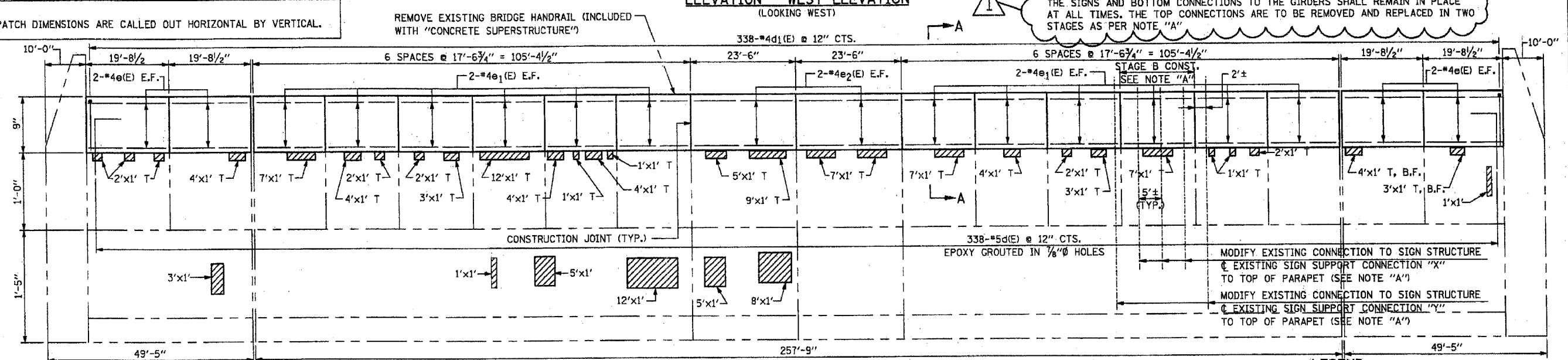


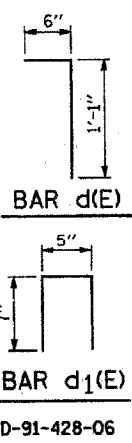
NOTE:
 VERTICAL DIMENSIONS ARE EXAGGERATED FOR CLARITY

NOTE:
 REPAIR PATCH DIMENSIONS ARE CALLED OUT HORIZONTAL BY VERTICAL.

NOTE:
 THE SIGNS AND BOTTOM CONNECTIONS TO THE GIRDERS SHALL REMAIN IN PLACE AT ALL TIMES. THE TOP CONNECTIONS ARE TO BE REMOVED AND REPLACED IN TWO STAGES AS PER NOTE "A"



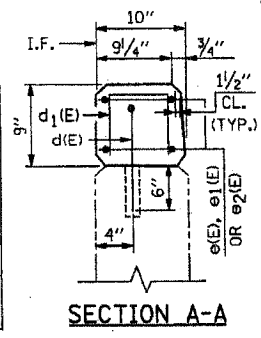
MODIFY EXISTING CONNECTION TO SIGN STRUCTURE
 EXISTING SIGN SUPPORT CONNECTION "X"
 TO TOP OF PARAPET (SEE NOTE "A")
 MODIFY EXISTING CONNECTION TO SIGN STRUCTURE
 EXISTING SIGN SUPPORT CONNECTION "Y"
 TO TOP OF PARAPET (SEE NOTE "A")



REINFORCEMENT BAR SCHEDULE				
BAR	NO.	SIZE	LENGTH	SHAPE
d(E)	676	#5	1'-7"	L
d1(E)	676	#4	1'-7"	I
ø(E)	32	#4	19'-4"	—
ø1(E)	96	#4	17'-2"	—
ø2(E)	16	#4	23'-2"	—

NOTES:
 PERFORM T/PARAPET REPAIRS PRIOR TO CONSTRUCTING PARAPET EXTENSIONS.
 CONTRACTOR SHALL PROVIDE SHOP DRAWINGS FOR NEW CONNECTIONS.

BILL OF MATERIAL		
DESCRIPTION	UNIT	QUANTITY
STRUCTURAL REPAIR OF CONCRETE (DEPTH EQUAL TO OR LESS THAN 5")	SG. FT.	259
CONCRETE SUPERSTRUCTURE	CU. YD.	15
REINFORCEMENT BARS, EPOXY COATED	LB.	3,590
MODIFY EXISTING CONNECTION TO SIGN STRUCTURE	EACH	8



NOTE "A"
 STAGE A: LEAVE IN PLACE SIGN STRUCTURE CONNECTIONS "X" TO TOP OF PARAPET AND REMOVE SIGN STRUCTURE CONNECTIONS "Y" TO TOP OF PARAPET. CONSTRUCT ALL PARAPET EXTENSIONS EXCEPT THOSE LABELLED STAGE B CONST. WHEN STAGE A CONCRETE f'c REACHES 3500PSI, INSTALL IN SAME LOCATION NEW CONNECTION FROM PARAPET TO SIGN SUPPORT AS PER STANDARD BM-1 THRU BM-3 (SHT'S S12B THRU S12D) AS IN DETAIL "A"-SEE STD. BM-3 ON SHT. S12D.
 STAGE B: REMOVE SIGN STRUCTURE CONNECTIONS "X" TO TOP OF PARAPET. CONSTRUCT ALL PARAPET EXTENSIONS LABELLED STAGE B CONST. WHEN STAGE B CONCRETE f'c REACHES 3500PSI, INSTALL IN SAME LOCATION NEW CONNECTION FROM PARAPET TO SIGN SUPPORT AS PER STANDARD BM-1 THRU BM-3 (SHT'S S12B THRU S12D) AS IN DETAIL "A"-SEE STD. BM-3 ON SHT. S12D. INCL. WITH "MODIFY EXISTING CONNECTION TO SIGN STRUCTURE."

LEGEND:
 [Hatched Box] STRUCTURAL REPAIR OF CONCRETE (DEPTH EQUAL TO OR LESS THAN 5")
 T, F.F. = TOP & FRONT FACE
 T, B.F. = TOP & BACK FACE
 T = TOP
 E.F. = EACH FACE
 I.F. = INSIDE FACE

REVISIONS	
NAME	DATE

ILLINOIS DEPARTMENT OF TRANSPORTATION
 PARAPET REPAIRS
 F.A.I. RTE. 290 (I-290) OVER
 N.W. TOLLWAY (I-90)
 F.A.I. RTE. 290 SECTION: 2006-0301
 COOK COUNTY STATION 637+76.18
 STRUCTURE NO. 016-0977
 SCALE: DATE: MAY 10, 2007. DRAWN BY: D.L./F.M. CHECKED BY: B.N.S./J.C.N.
 CHRISTIAN-ROGE & ASSOC., INC.
 CHICAGO ILLINOIS

REVISIONS PROJECT NO. 60B79 SHEET S6 OF S34