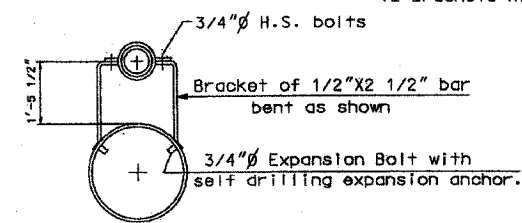
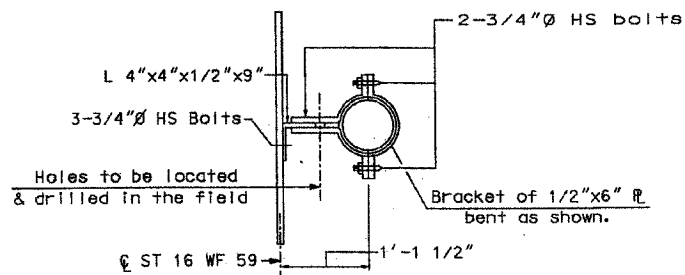
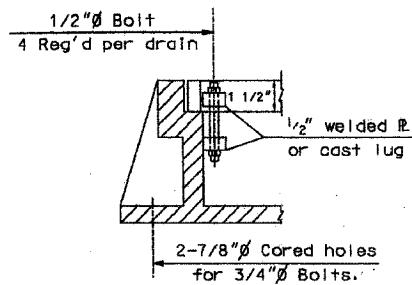
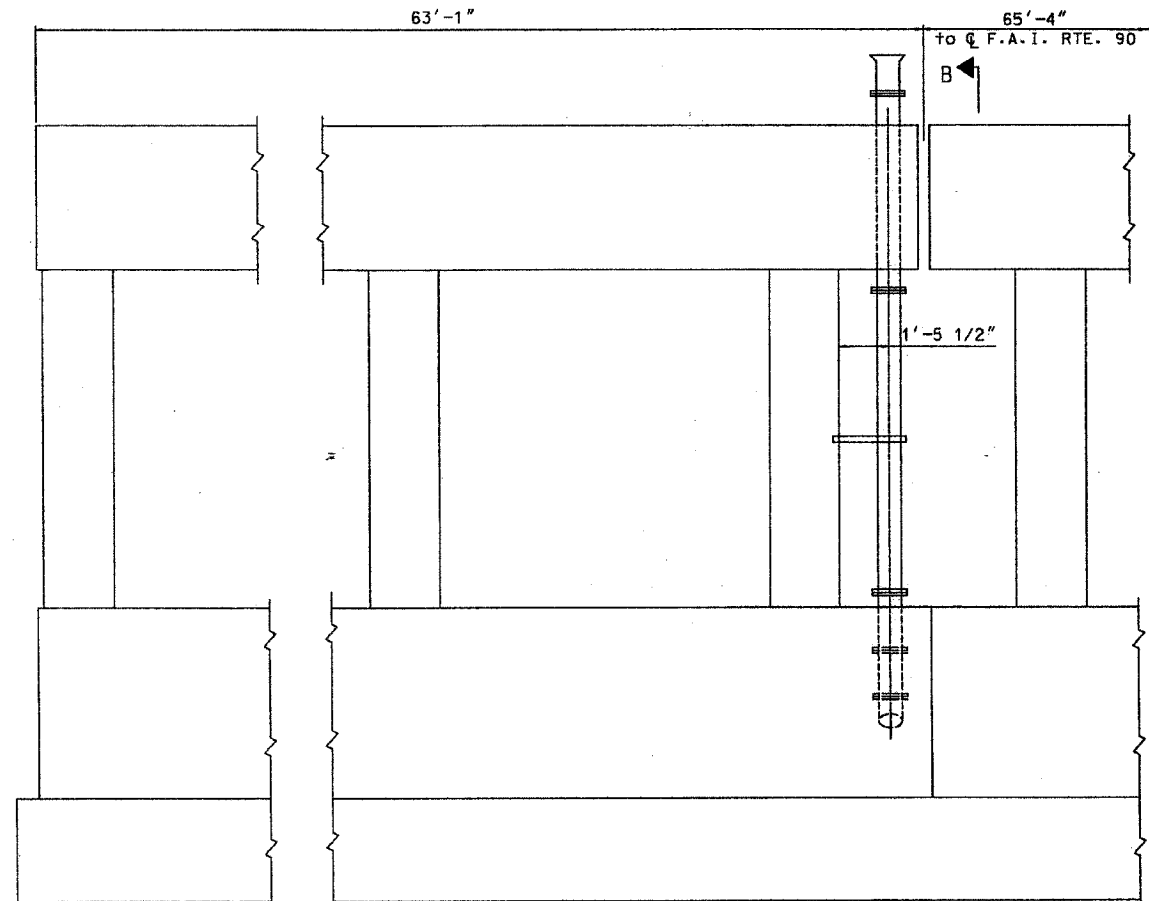
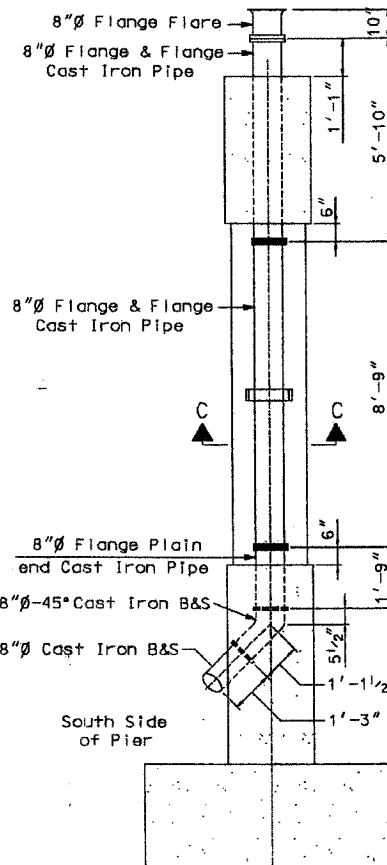
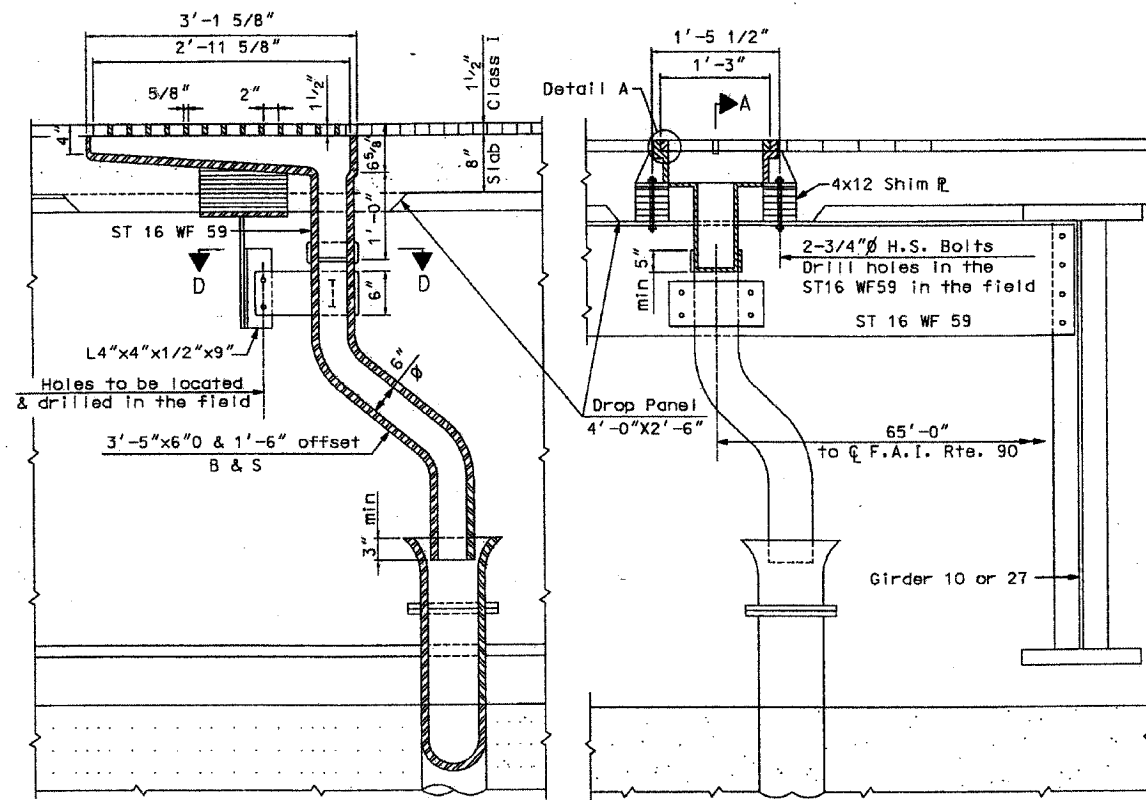


PAL. NO.	SECTION	COUNTY	TOTAL SHEETS	SHEET NO.
290	2006-0301	COOK	78	49A
STA.	TO STA.			
FED. ROAD DIST. NO.	ILLINOIS	FED. AID PROJECT		

CONTRACT NO. 60B79



Notes:
 Pipe & Fittings shall conform to ASTM Designation ASA B16.1 Nodular Iron Castings.
 Fittings shall be Class 125 Cast Iron Flanged Fittings shall conform to ASA B 16.1. Threaded Fittings shall conform to ASA Std. B16.12.
 For downspouts See Special Provisions.
 Brackets & attaching bolts shall be galvanized by the hot dip process. The zinc coating shall conform to ASTM designation A-153.
 Cost of brackets, bolts, expansion anchors & shims shall be incidental to the cost of cast Iron Downspouts.

Painting of Frames, Grates, Downspouts and brackets shall comply with Articles 509.01 to 509.05 inclusive of the Standard Specifications. One coat of red lead paint and two field coats of aluminum paint shall be applied

NOTES:
 THIS SHEET IS A REPRODUCTION OF SHT. NO. 131 OF SHT. NO. 294 DONE IN 1968 FOR CONTRACT 26517 AND IS INTENDED FOR INFORMATION ONLY REGARDING PAY ITEM "CLEANING DRAINAGE SYSTEM".
 F.A.I. RTE. 90. AS INDICATED ON THIS SHEET. IS NOW F.A.I. RTE. 290.

BILL OF MATERIAL

Item	Unit	Quantity
Frame & Grates Special	Each	2
Cast Iron Downspouts 6"Ø	Lin Ft	9
Cast Iron Downspouts 8"Ø	Lin Ft	41

FOR INFORMATION ONLY

ILLINOIS DEPARTMENT OF TRANSPORTATION
 EXISTING DRAINAGE SYSTEM
 F.A.I. RTE. 290 (I-290) OVER
 N.W. TOLLWAY (I-90)
 F.A.I. RTE. 290 SECTION: 2006-0301
 COOK COUNTY STATION 637+76.18
 STRUCTURE NO. 016-0977

SCALE: NONE
 DATE: MAY 10, 2007

DRAWN BY: D.L./F.M.
 CHECKED BY: B.H.S./J.C.N.

CHRISTIAN-ROGE & ASSOC., INC.
 CHICAGO ILLINOIS

REVISIONS

NAME	DATE