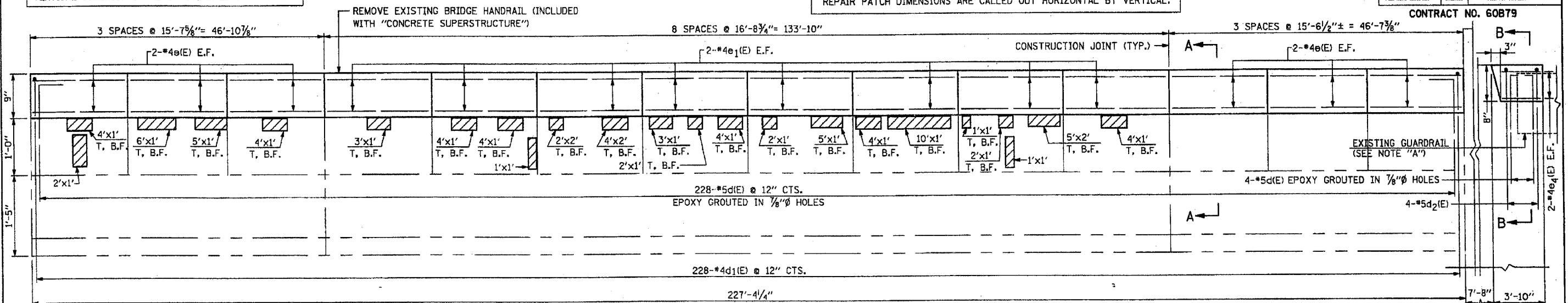


PAL. NO.	SECTION	COUNTY	TOTAL SHEETS	SHEET NO.
290	2006-0301	COOK	78	55
STA.	TO STA.		FED. ROAD DIST. NO.	
			ILLINOIS	
FED. AID PROJECT				

CONTRACT NO. 60B79

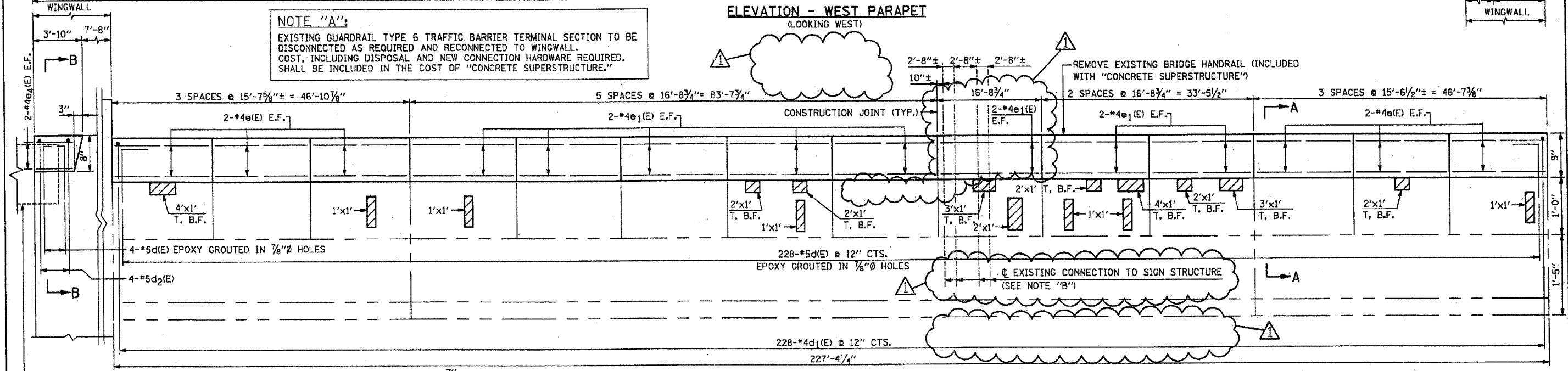
NOTE:  
VERTICAL DIMENSIONS ARE EXAGGERATED FOR CLARITY

NOTE:  
REPAIR PATCH DIMENSIONS ARE CALLED OUT HORIZONTAL BY VERTICAL.



NOTE "A":  
EXISTING GUARDRAIL TYPE 6 TRAFFIC BARRIER TERMINAL SECTION TO BE DISCONNECTED AS REQUIRED AND RECONNECTED TO WINGWALL. COST, INCLUDING DISPOSAL AND NEW CONNECTION HARDWARE REQUIRED, SHALL BE INCLUDED IN THE COST OF "CONCRETE SUPERSTRUCTURE."

ELEVATION - WEST PARAPET  
(LOOKING WEST)



NOTE "B":  
THE SIGN AND ITS SUPPORTS SHALL BE REMOVED FROM THE PARAPET DURING CONSTRUCTION. COST IS INCLUDED WITH "REMOVE AND RE-ERECT BRIDGE MOUNTED SIGN". SEE SH. S18A.

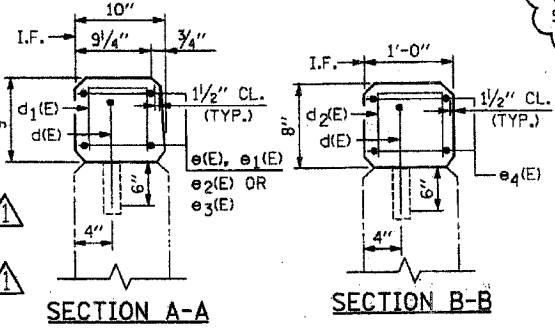
LEGEND:  
 STRUCTURAL REPAIR OF CONCRETE (DEPTH EQUAL TO OR LESS THAN 5")  
 T, F.F. = TOP & FRONT FACE  
 T, B.F. = TOP & BACK FACE  
 T = TOP  
 E.F. = EACH FACE  
 I.F. = INSIDE FACE

REINFORCEMENT BAR SCHEDULE				
BAR	NO.	SIZE	LENGTH	SHAPE
d(E)	464	#5	1'-7"	└
d <sub>1</sub> (E)	456	#4	1'-7"	└
d <sub>2</sub> (E)	8	#4	1'-7"	└
e(E)	48	#4	15'-2"	—
e <sub>1</sub> (E)	64	#4	16'-4"	—
e <sub>4</sub> (E)	8	#4	3'-3"	—

NOTE:  
PERFORM T/PARAPET REPAIRS PRIOR TO CONSTRUCTING PARAPET EXTENSIONS.

ELEVATION - EAST PARAPET  
(LOOKING WEST)

BILL OF MATERIAL		
DESCRIPTION	UNIT	QUANTITY
STRUCTURAL REPAIR OF CONCRETE (DEPTH EQUAL TO OR LESS THAN 5")	SQ. FT.	150
CONCRETE SUPERSTRUCTURE	CU. YD.	12
REINFORCEMENT BARS, EPOXY COATED	LB.	2,460
MODIFY EXISTING CONNECTION TO SIGN STRUCTURE	EACH	1
REMOVE AND RE-ERECT BRIDGE MOUNTED SIGN	EACH	1



REVISIONS	
NAME	DATE

ILLINOIS DEPARTMENT OF TRANSPORTATION  
**PARAPET REPAIRS**  
 F.A.I. RTE. 290 (I-290) OVER  
 GOLF ROAD  
 F.A.I. RTE. 290 SECTION 2006-0301  
 COOK COUNTY STATION 612+95.92  
 STRUCTURE NO. 016-0980

SCALE: DATE: MAY 10, 2007  
 DRAWN BY: D.L./F.M.  
 CHECKED BY: B.N.S./J.C.N.  
**CHRISTIAN-ROGE & ASSOC., INC.**  
 CHICAGO ILLINOIS

D-91-428-06

REVISED 6-1-07