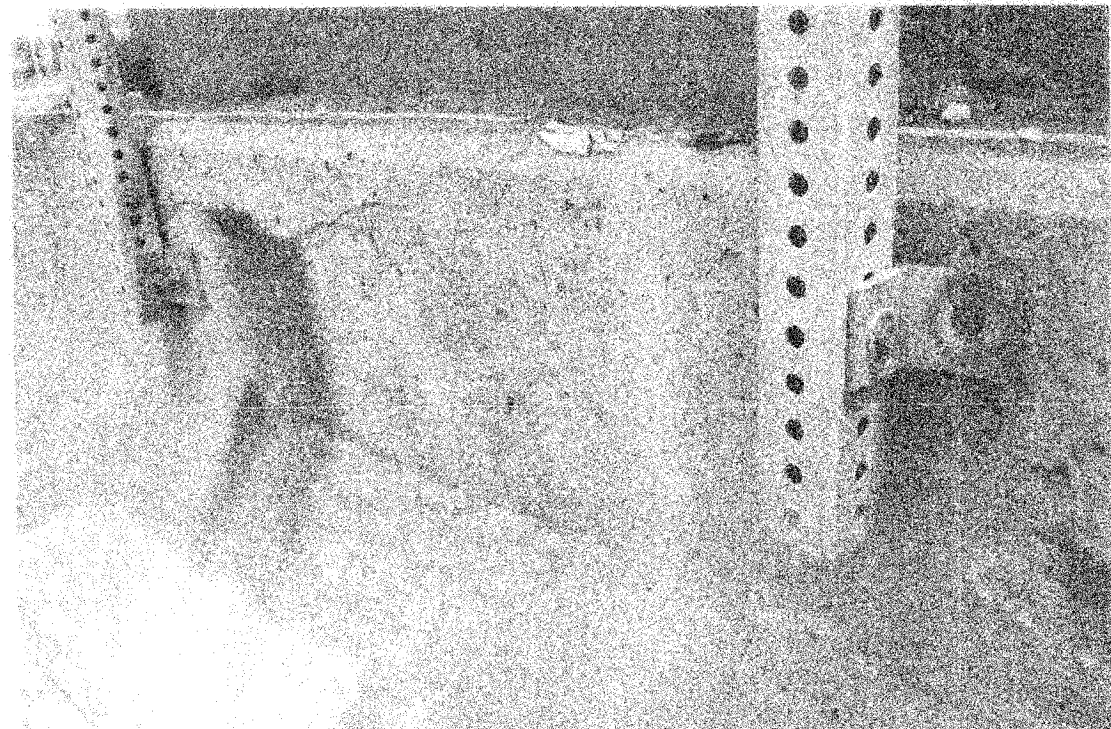
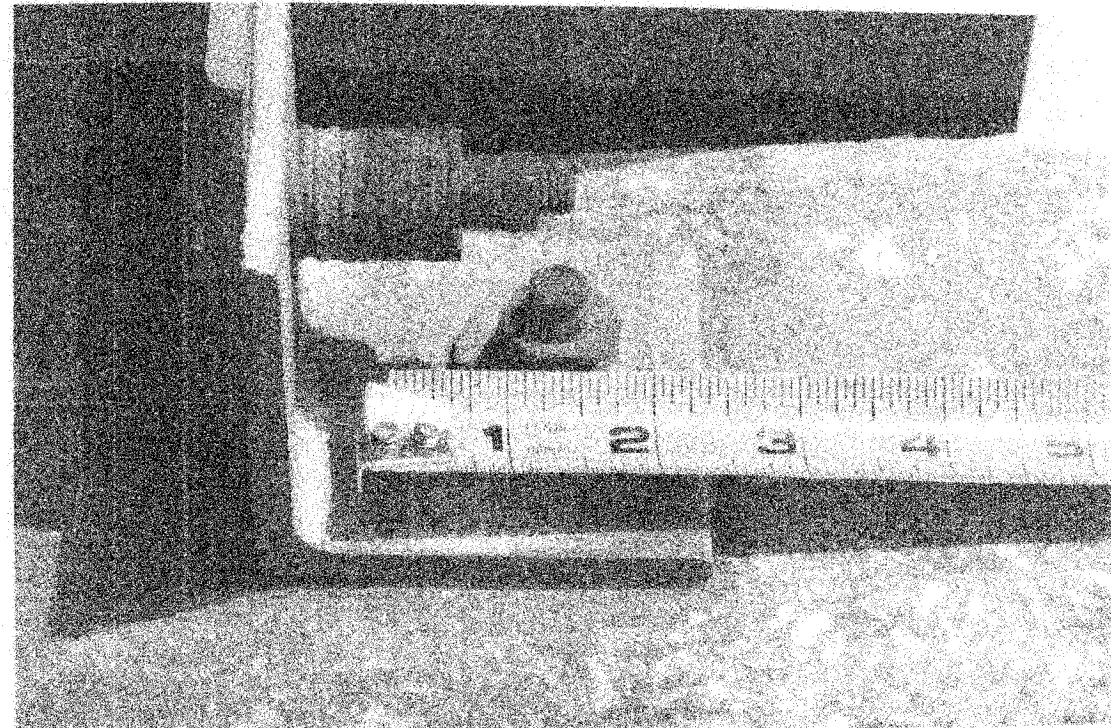


F.A.I. DIST.	SECTION	COUNTY	TOTAL SHEETS	SHEET NO.
290	2006-0301	COOK	78	55A
STA.	TO STA.			
FED. ROAD DIST. NO.	EL. POINT	FED. AID PROJECT		

CONTRACT NO. 60879



EAST PARAPET ELEVATION
(SHOWING CONNECTIONS TO INSIDE FACE OF PARAPET)
(LOOKING EAST)



TOP OF EAST PARAPET
(SHOWING CONNECTIONS TO TOP OF PARAPET)

NOTE:
THE SIGN AND ITS SUPPORTS SHALL BE REMOVED FROM THE PARAPET DURING CONSTRUCTION. COST IS INCLUDED WITH "REMOVE AND RE-ERECT BRIDGE MOUNTED SIGN". SEE SHJ. S18.

D-91-428-06

△ ADDED SHEET 6-1-07

REVISIONS	
NAME	DATE

ILLINOIS DEPARTMENT OF TRANSPORTATION
 REMOVAL AND RE-ERECTION OF SIGN
 F.A.I. RTE. 290 (I-290) OVER
 GOLF ROAD
 F.A.I. RTE. 290 SECTION: 2006-0301
 COOK COUNTY STATION 612+95.92
 STRUCTURE NO. 016-0980

SCALE: NONE
 DATE: MAY 10, 2007

DRAWN BY: DL/VJM
 CHECKED BY: B.M.S./J.C.M.

CHRISTIAN-ROGE & ASSOC., INC.
 CHICAGO ILLINOIS