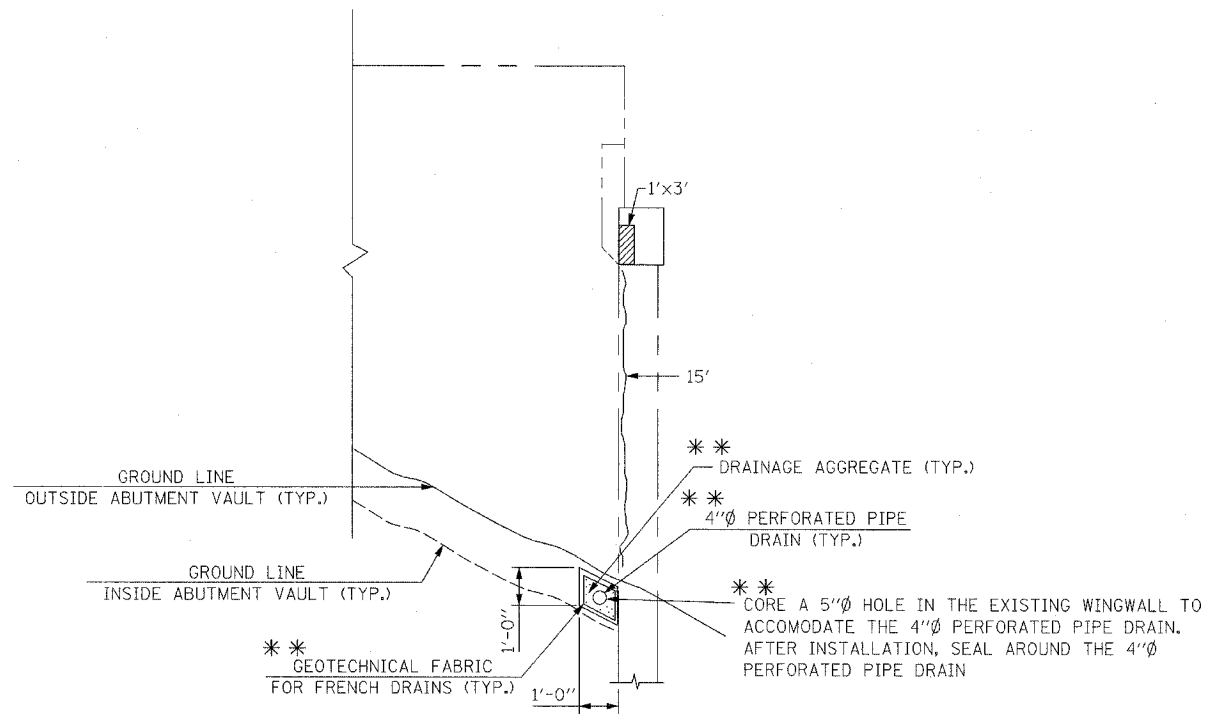


F.A.I. RTE.	SECTION	COUNTY	TOTAL SHEETS	SHEET NO.
290	2006-0301	COOK	76	46
STA.	TO STA.			
FED. ROAD DIST. NO.	ILLINOIS	FED. AID PROJECT		

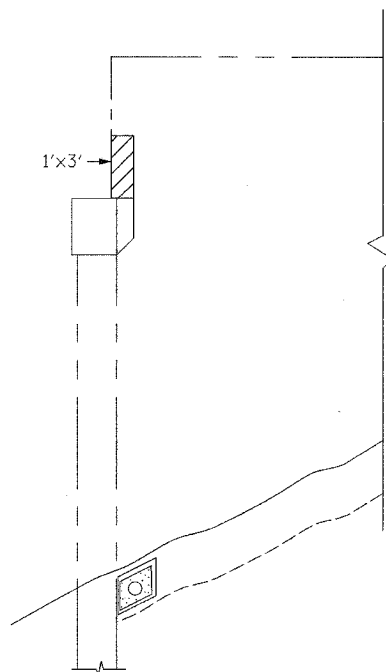
CONTRACT NO. 60B79



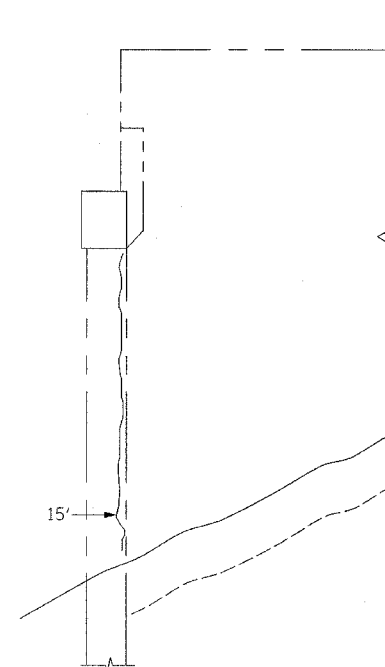
**WINGWALL ELEVATION
SOUTH ABUTMENT-EAST
(LOOKING WEST)**

** INCLUDED IN THE COST FOR PIPE UNDERDRAINS FOR STRUCTURES 4"

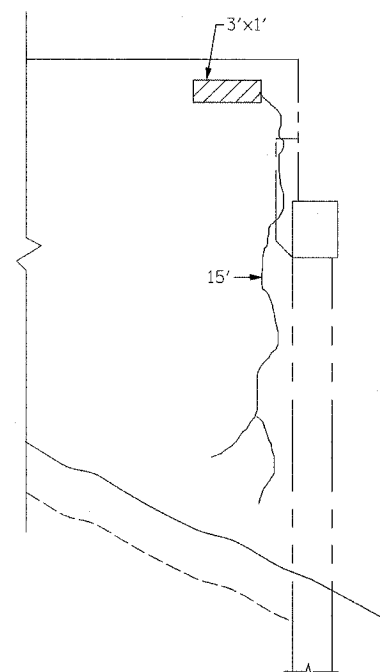
NOTE:
SEE SHT. S7 FOR THE QUANTITIES OF PIPE UNDERDRAIN FOR STRUCTURES, 4"



**WINGWALL ELEVATION
NORTH ABUTMENT-EAST
(LOOKING WEST)**



**WINGWALL ELEVATION
SOUTH ABUTMENT-WEST
(LOOKING EAST)**



**WINGWALL ELEVATION
NORTH ABUTMENT-WEST
(LOOKING EAST)**

NOTES:
CRACK WIDTHS ARE $\frac{1}{8}'' \pm \frac{1}{16}''$ UNLESS OTHERWISE NOTED.
REPAIR PATCH DIMENSIONS ARE CALLED OUT HORIZONTAL BY VERTICAL.

BILL OF MATERIAL		
DESCRIPTION	UNIT	QUANTITY
STRUCTURAL REPAIR OF CONCRETE (DEPTH EQUAL TO OR LESS THAN 5")	SQ. FT.	10
EPOXY CRACK INJECTION	FT.	52

LEGEND:
 STRUCTURAL REPAIR OF CONCRETE (DEPTH EQUAL TO OR LESS THAN 5")
 EPOXY CRACK INJECTION

REVISIONS	
NAME	DATE

ILLINOIS DEPARTMENT OF TRANSPORTATION
WINGWALL REPAIRS
 F.A.I. RTE. 290 (I-290) OVER
 N.W. TOLLWAY (I-90)
 F.A.I. RTE. 290 SECTION: 2006-0301
 COOK COUNTY STATION 637+76.18
 STRUCTURE NO. 016-0977

SCALE: DATE: MAY 10, 2007
 DRAWN BY: D.L./F.M.
 CHECKED BY: B.N.S./J.C.N.
CHRISTIAN-ROGE & ASSOC., INC.
 CHICAGO ILLINOIS