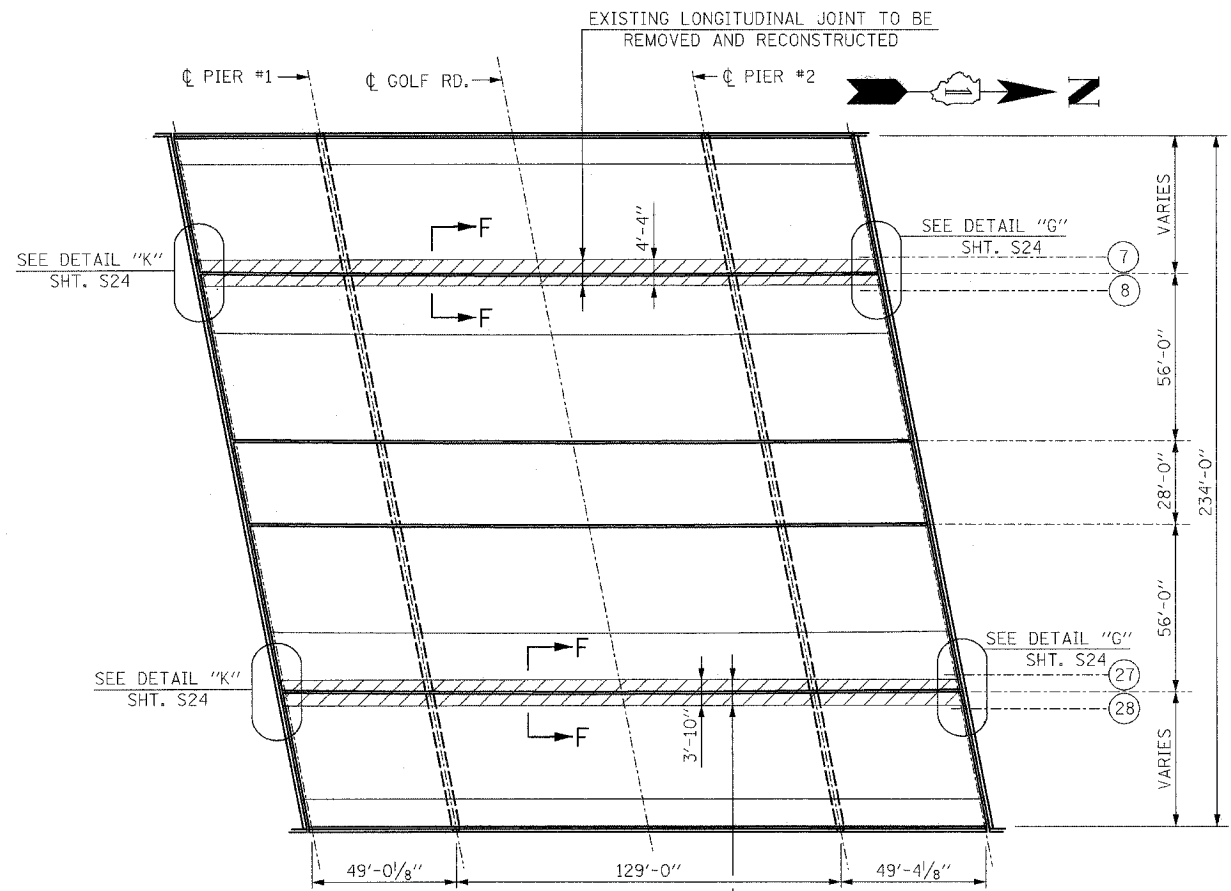
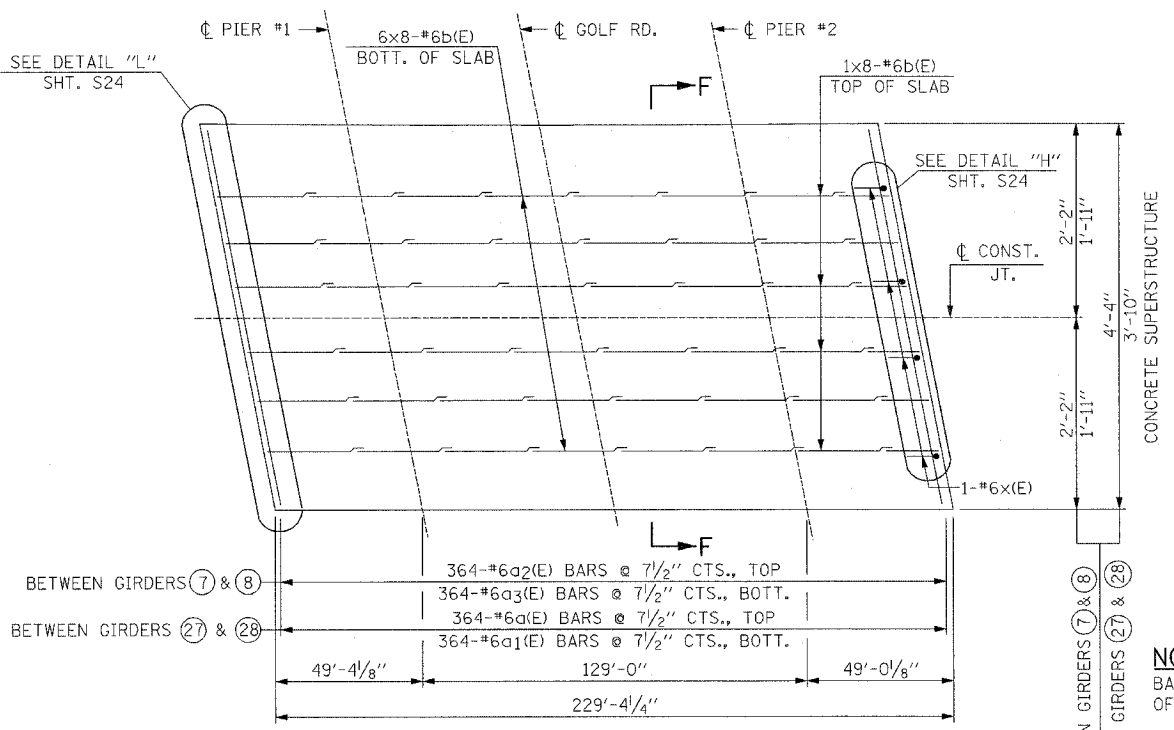


F.A.I. RTE. 290	SECTION 2006-0301	COUNTY COOK	TOTAL SHEETS 78	SHEET NO. 60
STA. TO STA.		ILLINOIS FED. AID PROJECT		
CONTRACT NO. 60B79				



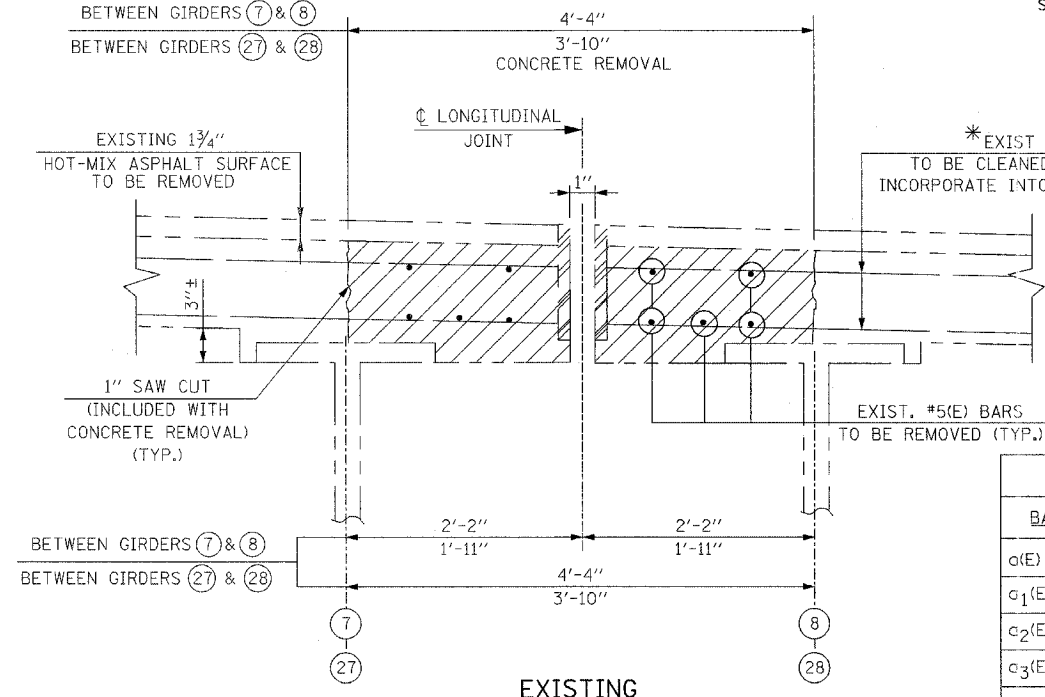
DECK PLAN



PROPOSED LONGITUDINAL JOINT DETAIL PLAN

(BETWEEN GIRDERS 7 & 8 - SHOWN)
(BETWEEN GIRDERS 27 & 28 - SIMILAR)

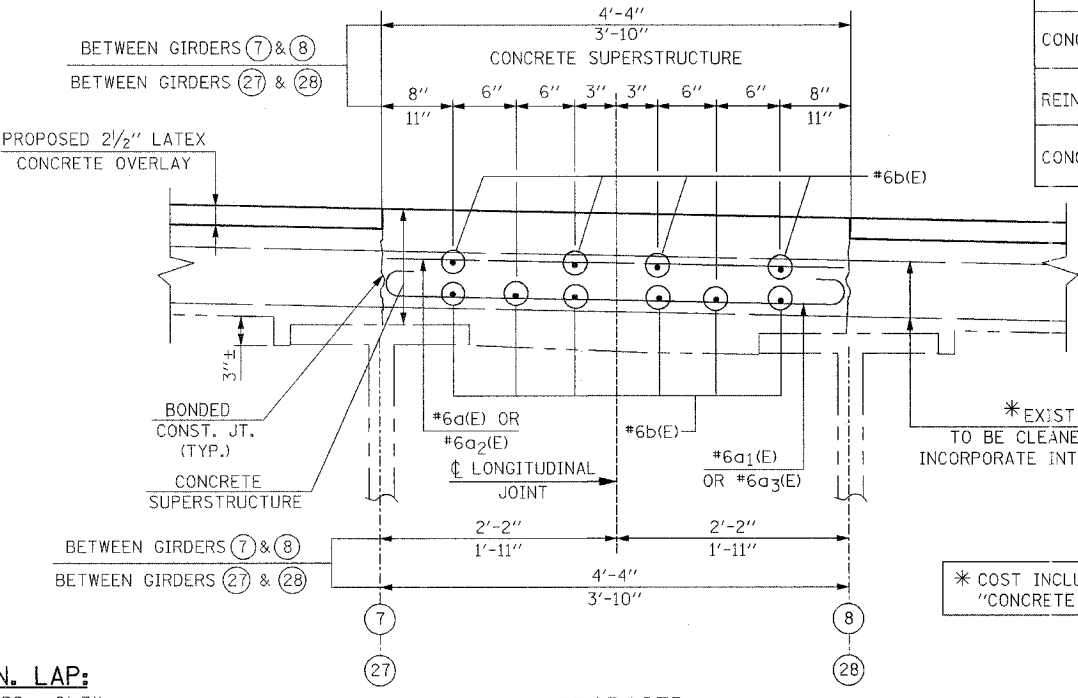
D-91-428-06



EXISTING LONGITUDINAL JOINT SECTION F-F

LEGEND:

CONCRETE REMOVAL



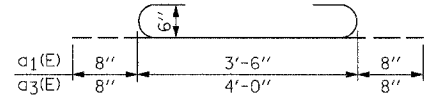
PROPOSED RECONSTRUCTED LONGITUDINAL JOINT SECTION F-F

MIN. LAP:
#6 BARS = 2'-7"

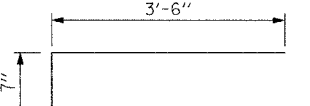
NOTE:
BARS INDICATED THUS: 6x8-#6 ETC., INDICATES 6 LINES OF BARS WITH 8 LENGTHS PER LINE.

NOTE:
FOR BAR SPACING, SEE SECTION F-F

BILL OF MATERIAL				
BAR	NO.	SIZE	LENGTH	SHAPE
a(E)	364	#6	3'-6"	—
a ₁ (E)	364	#6	4'-10"	
a ₂ (E)	364	#6	4'-0"	—
a ₃ (E)	364	#6	5'-4"	
b(E)	160	#6	30'-9"	—
x(E)	4	#6	4'-1"	
DESCRIPTION		UNIT	QUANTITY	
CONCRETE REMOVAL		CU. YD.	63	
REINFORCEMENT BARS, EPOXY COATED		LB.	17,070	
CONCRETE SUPERSTRUCTURE		CU. YD.	78	



BARS a₁(E) & a₃(E)



BAR x(E)

REVISIONS	
NAME	DATE

ILLINOIS DEPARTMENT OF TRANSPORTATION
LONGITUDINAL JOINT REMOVAL
 F.A.I. RTE. 290 (I-290) OVER
 GOLF ROAD
 F.A.I. RTE. 290 SECTION: 2006-0301
 COOK COUNTY STATION 612+95.92
 STRUCTURE NO. 016-0980

SCALE: DATE: MAY 10, 2007 DRAWN BY: D.L./F.M. CHECKED BY: B.N.S./J.C.N.
CHRISTIAN-ROGE & ASSOC., INC.
 CHICAGO ILLINOIS