

F.A.P. RTE.	SECTION	COUNTY	TOTAL SHEETS	SHEET NO.
303	131B (1&2) BR	McHENRY	107	3
STA.		TO STA.		
FED. ROAD DIST. NO.	ILLINOIS	FED. AID PROJECT		

CONTRACT NO. 60B83

GENERAL NOTES

1. FORTY-EIGHT HOURS BEFORE STARTING EXCAVATION THE CONTRACTOR WILL CALL J.U.L.I.E. (1-800-892-0123) TO HAVE THE LOCATION OF EXISTING UTILITIES STAKED.
2. THE CONTRACTOR SHALL COORDINATE CONSTRUCTION ACTIVITIES WITH THE RESPECTIVE UTILITIES AND THE McHENRY COUNTY CONSERVATION DISTRICT (MCCD).
3. THE CONTRACTOR SHALL PROTECT EXISTING AND NEW UTILITIES AND SHALL BRACE AND SUPPORT THE UTILITIES PROPERLY IN ORDER TO PREVENT SETTLEMENT, DISPLACEMENT, OR DAMAGE TO THE UTILITIES. THE PROTECTION OF THE UTILITIES AS SPECIFIED HEREIN WILL NOT BE PAID FOR SEPARATELY, BUT SHALL BE CONSIDERED AS INCLUDED IN THE CONTRACT.
4. LOCATIONS OF EXISTING UTILITIES SHOWN ON THE PLANS ARE FROM BEST AVAILABLE RECORD INFORMATION AND MUST BE FIELD VERIFIED BY THE CONTRACTOR.
5. THE CONTRACTOR SHALL MAINTAIN THE SURFACE DRAINAGE OF ALL ROADS DURING CONSTRUCTION OF THIS PROJECT. WHEN EXISTING DRAINAGE FACILITIES ARE DISRUPTED, THE CONTRACTOR SHALL PROVIDE AND MAINTAIN TEMPORARY OUTLETS AND CONNECTIONS FOR ALL PRIVATE OR PUBLIC DRAINS, SEWERS, INLETS, OR CATCH BASINS. HE SHALL PROVIDE FACILITIES TO TAKE IN ALL STORM WATER WHICH WILL BE RECEIVED BY THESE DRAINS AND SEWERS AND DISCHARGE SAME. HE SHALL PROVIDE AND MAINTAIN A TEMPORARY OUTLET, AND BE PREPARED AT ALL TIMES TO DISPOSE OF THE WATER RECEIVED FROM THESE TEMPORARY CONNECTIONS UNTIL SUCH TIME AS THE PERMANENT CONNECTIONS WITH SEWERS ARE BUILT AND IN SERVICE. THIS WORK SHALL NOT BE PAID FOR DIRECTLY, BUT WILL BE CONSIDERED INCIDENTAL TO THE CONTRACT.
6. SAW CUTTING PRIOR TO ANY REMOVAL ITEMS NOTED ON THE PLANS OR DIRECTED BY THE ENGINEER SHALL BE CONSIDERED INCLUDED IN THE COST OF THE ITEMS BEING REMOVED.
7. DO NOT SCALE PLANS FOR CONSTRUCTION DIMENSIONS.
8. THE CONTRACTOR SHALL USE CARE IN GRADING OR EXCAVATING NEAR ANY AND ALL EXISTING ITEMS WHICH WILL NOT BE REMOVED. ANY DAMAGE DONE TO EXISTING ITEMS BY THE CONTRACTOR SHALL BE REPAIRED BY HIM AT HIS OWN EXPENSE.
9. ELEVATIONS SHOWN ON THE PLANS ARE BASED ON N.A.V.D. 1988.
10. POLLUTION CONTROL: THE CONTRACTOR WILL BE REQUIRED TO COMPLY WITH STATE REGULATIONS REGARDING AIR, WATER AND NOISE POLLUTION.
11. WHEN ARTIFICIAL LIGHTING IS UTILIZED IN NIGHT OPERATIONS, THE CONTRACTOR SHALL EXERCISE THE UTMOST PRECAUTIONS IN PREVENTING ADVERSE VISIBILITY TO THE MOTORING PUBLIC AS WELL AS ADJOINING RESIDENTIAL AREAS.
12. 10-FOOT TRANSITIONS SHALL BE USED TO MATCH PROPOSED ITEMS OF WORK TO EXISTING ITEMS IN THE FIELD, UNLESS OTHERWISE SHOWN. THE TRANSITIONS SHALL BE PAID FOR AT THE CONTRACT UNIT PRICE FOR THE PROPOSED ITEM OF WORK SPECIFIED.
13. THE CONTRACTOR AS REQUIRED, SHALL OBTAIN ALL NECESSARY PERMITS PRIOR TO COMMENCING WITH CONSTRUCTION.
14. THE CONTRACTOR'S OPERATIONS AND TEMPORARY STORAGE ACTIVITIES SHALL BE LIMITED TO WITHIN THE CONSTRUCTION LIMITS. ANY ADDITIONAL STAGING AREAS OR ACTIVITIES OUTSIDE TO THE CONSTRUCTION LIMITS WILL NOT BE ALLOWED. NO EARTH STOCKPILES WILL BE ALLOWED WITHIN THE PROJECT LIMITS. NO ADDITIONAL COMPENSATION WILL BE ALLOWED TO THE CONTRACTOR FOR COMPLIANCE WITH THE ABOVE REQUIREMENTS.

COMMITMENTS

- | | | |
|---|--|--|
| <ol style="list-style-type: none"> 1. THE CONTRACTOR SHALL BE REQUIRED TO PROTECT AND AVOID ANY IMPACT TO THE SPECKLED ADLER TREES, SLIPPERSHELL MUSSELS, AND THE BLANDING'S TURTLE, BOTH OF WHICH HAVE HABITATS WITHIN THE PROJECT LIMITS. THE CONTRACTOR WILL BE REQUIRED TO INFORM WORKERS AND SUBCONTRACTORS TO AVOID ANY IMPACT TO THESE TWO SPECIES. | <ol style="list-style-type: none"> 2. THE CONTRACTOR IS REQUIRED TO CONFORM TO THE REQUIREMENTS IN THE INCIDENTAL TAKE PERMITS. THIS SHALL BE ADDRESSED AT THE PRE-CONSTRUCTION MEETING PRIOR TO ANY WORK DONE IN THE AREA. | <ol style="list-style-type: none"> 3. IF ANY BLANDING'S TURTLES ARE FOUND WITHIN THE PROJECT LIMITS, THE CONTRACTOR SHALL CONTACT MR. ED COLLINS FROM THE McHENRY COUNTY CONSERVATION DISTRICT, (MOBILE) (815) 790-0351 AND/OR (OFFICE) (815) 338-6223, TO IDENTIFY AND RELOCATE THE BLANDING'S TURTLE. |
|---|--|--|

SPECIAL DESIGN / CONSTRUCTION CONSIDERATIONS

1. THE DEPARTMENT HAS AN ENVIRONMENTAL SENSING STATION (ESS) LOCATED IN THE NORTHEAST QUADRANT OF THE PISCASAW CREEK CROSSING AT STATION 102+12. PROTECTION FOR THE ESS WILL BE REQUIRED DURING CONSTRUCTION. ALSO, COORDINATION WITH THE CENTRAL BUREAU OF OPERATIONS WILL BE NECESSARY TO PROPERLY REMOVE AND REINSTALL THE SENSORS LOCATED ON THE BRIDGE DECK OF THE MAIN STRUCTURE.

15. WHERE SECTION OR SUB-SECTION MARKERS ARE ENCOUNTERED, THE ENGINEER SHALL BE NOTIFIED BEFORE SUCH MONUMENTS ARE REMOVED. THE CONTRACTOR SHALL PROTECT AND CAREFULLY PRESERVE ALL PROPERTY MARKERS AND MONUMENTS UNTIL THE OWNER, AN AUTHORIZED AGENT OR LAND SURVEYOR HAS WITNESSED OR OTHERWISE REFERENCED THEIR LOCATION.
16. CONTRACTOR SHALL TAKE ALL NECESSARY MEASURES TO ASSURE THAT NO DEBRIS FALLS IN THE CREEK. THE COST OF THIS WORK SHALL BE INCLUDED AS PART OF REMOVAL OF EXISTING STRUCTURE.
17. CONTRACTOR IS FULLY RESPONSIBLE FOR PROVIDING ANY DIVERSION OF CREEK AND PROTECTION OF CREEK AS NEEDED TO FACILITATE SPECIFIED WORK. SUCH TEMPORARY MEASURES ARE SUBJECT TO THE APPROVAL OF THE ENGINEER, THE DEPARTMENT OF NATURAL RESOURCES AND ARMY CORP OF ENGINEERS. THE COST OF THE COFFERDAMS SHALL BE PAID FOR AS SHOWN IN THE PLANS, ALL OTHER TEMPORARY MEASURES, INCLUDING SILT CURTAIN AND ANY OTHER METHODS SHALL BE CONSIDERED INCLUDED IN THE UNIT COST OF THE VARIOUS PAY ITEMS.
18. BUTT JOINTS WILL BE INSTALLED AT THE ENDS OF ALL RESURFACING (WHERE RESURFACING MEETS EXISTING PAVEMENT), IN ACCORDANCE WITH THE "BUTT JOINT AND HMA TAPER DETAILS" SHEET INCLUDED IN THE PLANS, UNLESS OTHERWISE SPECIFIED.
19. THE REMOVAL OF EXISTING STORM SEWER, DRAINAGE STRUCTURES, HMA DRIVEWAYS AND ENTRANCE PIPE CULVERTS SHALL BE INCLUDED IN THE COST OF THE CONTRACT WHEN THEY WILL BE REMOVED AS PART OF EARTH EXCAVATION OR DURING THE INSTALLATION OF THE PROPOSED ITEM OF WORK.
20. THE RESIDENT ENGINEER SHALL CONTACT THE TRAFFIC CONTROL SUPERVISOR AT (847) 705-4470 A MINIMUM OF 72 HOURS PRIOR TO THE PLACEMENT OF ANY TEMPORARY TRAFFIC CONTROL DEVICES.
21. ALL EXISTING SIGNS REMOVED SHALL BE DELIVERED TO IDOT AS DIRECTED BY THE ENGINEER. THE COST OF REMOVING AND DELIVERING THE EXISTING SIGNS TO THE SIGN SHOP WILL BE CONSIDERED AS INCLUDED IN THE BID PRICES OF THE CONTRACT.
22. THE McHENRY COUNTY CONSERVATION DISTRICT MUST BE CONTACTED AND PRIOR APPROVAL OBTAINED FOR ALL TREE REMOVAL BEYOND THE LIMITS / LOCATIONS SHOWN IN THE PLANS.
23. THE APPROXIMATE LIMITS OF THE WORK PLATFORM AND RAMPS FOR CONTRACTOR ACCESS TO THE CREEK BED ARE SHOWN ON THE PLAN AND PROFILE SHEET. THE CONTRACTOR SHALL DETERMINE THE LIMITS OF THESE BASED ON HIS OPERATIONS.
24. THE COST OF ALL EXCAVATION, FILL MATERIAL AND AGGREGATE FOR RAMPS AND PLATFORMS, SHALL BE INCLUDED IN THE UNIT PRICE BID FOR THE REMOVAL OF THE EXISTING STRUCTURES.
24. THE CONTRACTOR SHALL DELIVER ALL STATE OWNED EQUIPMENT TO THE WOODSTOCK TEAM SECTION AT 11916 CATALPA LANE, WOODSTOCK, IL 60098 ON NORMAL WORKING DAYS BETWEEN THE HOURS OF 8 AM TO 2 PM.
25. THE COST OF REMOVING AND DELIVERING THE BARRICADES, DRUMS AND TEMPORARY SIGNS SHALL BE INCLUDED IN THE CONTRACT UNIT PRICE FOR SAND MODULE IMPACT ATTENUATOR TO BE REMOVED.
25. THE RESIDENT ENGINEER SHALL CONTACT THE TRAFFIC CONTROL SUPERVISOR AT (847) 705-4670 A MINIMUM OF 72 HOURS PRIOR TO THE PLACEMENT OF ANY TRAFFIC CONTROL DEVICES.
26. TWO WEEKS PRIOR TO THE PLACEMENT OF PERMANENT PAVEMENT MARKINGS, THE RESIDENT ENGINEER SHALL CONTACT MS. DEBBIE HANSON, AREA TRAFFIC TECHNICIAN, AT (847) 438-2300.

27. ALL TEMPORARY SHEET PILING OR TEMPORARY SHEETING FOR ROADWAYS SHALL BE CUT OFF AS SHOWN ON PLANS AND SHALL BE LEFT IN PLACE.

NOTE: BOXED ITEMS ARE INCIDENTAL.

REVISIONS	
NAME	DATE

ILLINOIS DEPARTMENT OF TRANSPORTATION
GENERAL NOTES AND COMMITMENTS
ILLINOIS ROUTE 173

SCALE: NONE
DATE: APRIL 25, 2007
DRAWN BY: A.C.S.
CHECKED BY: S.J.P.

Rev. 6-4-07



CHRISTIAN-ROGE & ASSOCIATES, INC.
ENGINEERS-PLANNERS-SURVEYORS
211 WEST WACKER DRIVE
CHICAGO, ILLINOIS 60606
1-312-372-2023 FAX: 1-312-372-5274

SUMMARY OF QUANTITIES			TOTAL QUANTITIES FED. 80% STATE 20%	CONSTRUCTION TYPE CODE		
CODE NO	ITEM	UNIT		ROADWAY	OVERFLOW	PISCASAW
				IL.RTE.173 I000-2A	BRIDGE STP FUNDS X071-2A	BRIDGE FUNDS X071-2A
50300225	CONCRETE STRUCTURES	CU YD	315.9		83	232.9
50300255	CONCRETE SUPERSTRUCTURE	CU YD	397.7		144	253.7
50300260	BRIDGE DECK GROOVING	SQ YD	1,163		391	772
50300280	CONCRETE ENCASEMENT	CU YD	45.8		19	26.8
50300300	PROTECTIVE COAT	SQ YD	1,452		486	966
50500105	FURNISHING AND ERECTING STRUCTURAL STEEL	L SUM	1		0.30	0.70
50500505	STUD SHEAR CONNECTORS	EACH	7,581		2,814	4,767
50800205	REINFORCEMENT BARS, EPOXY COATED	POUND	125,770		39,900	85,870
50800515	BAR SPLICERS	EACH	1,064		389	675
51201600	FURNISHING STEEL PILES HP12X53	FOOT	3,650		1,026	2,624
51202305	DRIVING PILES	FOOT	3,650		1,026	2,624
51203600	TEST PILE STEEL HP12X53	EACH	7		3	4
51204650	PILE SHOES	EACH	74		21	53
51205200	TEMPORARY SHEET PILING	SQ FT	8,691	7,070	743	878
51500100	NAME PLATES	EACH	2		1	1
52000110	PREFORMED JOINT STRIP SEAL	FOOT	115			115
52100010	ELASTOMERIC BEARING ASSEMBLY, TYPE I	EACH	14			14
52100520	ANCHOR BOLTS, 1"	EACH	98		42	56
54213447	END SECTIONS, 12"	EACH	1	1		
54213657	PRECAST REINFORCED CONCRETE FLARED END SECTIONS, 12"	EACH	2	2		
54213663	PRECAST REINFORCED CONCRETE FLARED END SECTIONS, 18"	EACH	3	3		
54247110	GRATING FOR CONCRETE FLARED END SECTION, 18"	EACH	2	2		
55019500	STORM SEWERS, TYPE 1, REINFORCED CONCRETE CULVERT, STORM DRAIN, AND SEWER PIPE, CLASS IV 12"	FOOT	65	65		
55019700	STORM SEWERS, TYPE 1, REINFORCED CONCRETE CULVERT, STORM DRAIN, AND SEWER PIPE, CLASS IV 18"	FOOT	198	198		
59100100	GEOCOMPOSITE WALL DRAIN	SQ YD	85		56	29
60100060	CONCRETE HEADWALL FOR PIPE DRAINS	EACH	13	5	4	4
60100905	PIPE DRAINS 4"	FOOT	120		60	60
60100945	PIPE DRAINS 12"	FOOT	28	28		
60107700	PIPE UNDERDRAINS 6"	FOOT	240	240		
60108200	PIPE UNDERDRAINS 6" (SPECIAL)	FOOT	56	56		

SUMMARY OF QUANTITIES			TOTAL QUANTITIES FED. 80% STATE 20%	CONSTRUCTION TYPE CODE		
CODE NO	ITEM	UNIT		ROADWAY	OVERFLOW	PISCASAW
				IL.RTE.173 I000-2A	BRIDGE STP FUNDS X071-2A	BRIDGE FUNDS X071-2A
60109580	PIPE UNDERDRAINS FOR STRUCTURES, 4"	FOOT	340		158	182
60200205	CATCH BASINS, TYPE A, 4'-DIAMETER, TYPE 1 FRAME, CLOSED LID	EACH	2	2		
60202710	CATCH BASINS, TYPE A, 4'-DIAMETER, WITH SPECIAL FRAME AND GRATE	EACH	2	2		
60255500	MANHOLES TO BE ADJUSTED	EACH	1	1		
60257900	MANHOLES TO BE RECONSTRUCTED	EACH	1	1		
60600095	CLASS SI CONCRETE (OUTLET)	CU YD	4.2	4.2		
60900315	TYPE D INLET BOX, STANDARD 609006	EACH	3	3		
60900515	CONCRETE THRUST BLOCKS	EACH	1	1		
* 63000000	STEEL PLATE BEAM GUARD RAIL, TYPE A	FOOT	1,825	1,825		
* 63100085	TRAFFIC BARRIER TERMINAL, TYPE 6	EACH	8	8		
* 63100167	TRAFFIC BARRIER TERMINAL TYPE 1, SPECIAL (TANGENT)	EACH	4	4		
63200310	GUARDRAIL REMOVAL	FOOT	1,062	1,062		
67000400	ENGINEER'S FIELD OFFICE, TYPE A	CAL MO	14	14		
67100100	MOBILIZATION	L SUM	1	1		
70101800	TRAFFIC CONTROL AND PROTECTION (SPECIAL)	L SUM	1	1		
70102550	TRAFFIC CONTROL AND PROTECTION FOR TEMPORARY DETOUR	EACH	1	1		
70103816	TRAFFIC CONTROL SURVEILLANCE	CAL MO	12	12		
70106800	CHANGEABLE MESSAGE SIGN	CAL MO	24	24		
70300100	SHORT-TERM PAVEMENT MARKING	FOOT	576	576		
* 70300220	TEMPORARY PAVEMENT MARKING - LINE 4"	FOOT	10,480	10,480		
70300250	TEMPORARY PAVEMENT MARKING - LINE 8"	FOOT	110	110		
70300280	TEMPORARY PAVEMENT MARKING - LINE 24"	FOOT	75	75		
70301000	WORK ZONE PAVEMENT MARKING REMOVAL	SQ FT	592	592		
70400100	TEMPORARY CONCRETE BARRIER	FOOT	2,550	2,550		
70400600	RELOCATE TEMPORARY CONCRETE BARRIER (STATE OWNED)	FOOT	450	450		
* 78000200	THERMOPLASTIC PAVEMENT MARKING - LINE 4"	FOOT	5,609	5,609		
* 78000600	THERMOPLASTIC PAVEMENT MARKING - LINE 12"	FOOT	48	48		
* 78000650	THERMOPLASTIC PAVEMENT MARKING - LINE 24"	FOOT	25	25		
* 78008210	POLYUREA PAVEMENT MARKING TYPE I - LINE 4"	FOOT	1,600	1,600		
* 78100100	RAISED REFLECTIVE PAVEMENT MARKER	EACH	64	64		

* SPECIALTY ITEMS

Rev. 6-5-07

CR & A
CHRISTIAN-ROGE & ASSOCIATES, INC.
 ENGINEERS-PLANNERS-SURVEYORS
 211 WEST WACKER DRIVE
 CHICAGO, ILLINOIS 60606
 1-312-372-2023 FAX: 1-312-372-5274

REVISIONS	
NAME	DATE

ILLINOIS DEPARTMENT OF TRANSPORTATION

SUMMARY OF QUANTITIES
ILLINOIS ROUTE 173

SCALE: NONE
DATE: APRIL 25, 2007

DRAWN BY: A.C.S.
CHECKED BY: S.J.P.

CODE NO	ITEM	UNIT	TOTAL QUANTITIES FED. 80% STATE 20%	CONSTRUCTION TYPE CODE		
				ROADWAY IL.RTE.173	OVERFLOW BRIDGE STP FUNDS	PISCASAW BRIDGE BRIDGE FUNDS
				I000-2A	X071-2A	X071-2A
* 78100105	RAISED REFLECTIVE PAVEMENT MARKER (BRIDGE)	EACH	10	10		
* 78200410	GUARDRAIL MARKERS, TYPE A	EACH	24	24		
* 78200530	BARRIER WALL MARKERS, TYPE C	EACH	12	12		
* 78201000	TERMINAL MARKER - DIRECT APPLIED	EACH	4	4		
78300100	PAVEMENT MARKING REMOVAL	SQ FT	1,101	1,101		
78300200	RAISED REFLECTIVE PAVEMENT MARKER REMOVAL	EACH	74	74		
80400100	ELECTRIC SERVICE INSTALLATION	EACH	1	1		
80400200	ELECTRIC UTILITY SERVICE CONNECTION	L SUM	1	1		
* X0325752	AERIAL CABLE, 2-1/C NO. 2, ALUMINUM, WITH MESSENGER WIRE	FOOT	320	320		
* X0325809	AERIAL CABLE, 2-1/C NO. 2/0 ALUMINUM, WITH MESSENGER WIRE	FOOT	2,415	2,415		
* 81800320	AERIAL CABLE, 3-1/C NO. 4 WITH MESSENGER WIRE	FOOT	30	30		
* 82103400	LUMINAIRE, SODIUM VAPOR, HORIZONTAL MOUNT, PHOTO-CELL CONTROL, 400 WATT	EACH	8	8		
* 83057350	LIGHT POLE, WOOD, 60 FOOT, CLASS 4	EACH	2	2		
* 83057355	LIGHT POLE, WOOD, 60 FOOT, CLASS 4, WITH 15FT MAST ARM	EACH	8	8		
* 84100110	REMOVAL OF TEMPORARY LIGHTING UNITS	EACH	16	16		
* 84500120	REMOVAL OF ELECTRIC SERVICE INSTALLATION	EACH	2	2		
* 89000100	TEMPORARY TRAFFIC SIGNAL INSTALLATION	EACH	1	1		
* 89502375	REMOVE EXISTING TRAFFIC SIGNAL EQUIPMENT	EACH	1	1		
XX003404	TEMPORARY PAVEMENT, 8"	SQ YD	992	992		
X0322256	TEMPORARY INFORMATION SIGNING	SQ FT	43	43		
* X0323574	MAINTENANCE OF LIGHTING SYSTEM	CAL MO	14	14		
X0323830	DRAINAGE SCUPPERS, DS-11	EACH	2			2
X4022000	TEMPORARY ACCESS (COMMERCIAL ENTRANCE)	EACH	1	1		
X5020501	UNDERWATER STRUCTURE EXCAVATION PROTECTION - LOCATION 1	EACH	1			1
X5020502	UNDERWATER STRUCTURE EXCAVATION PROTECTION - LOCATION 2	EACH	1		1	
X7030100	WET TEMPORARY PAVEMENT MARKING TAPE, TYPE III	FOOT	2,396	2,396		
Z0001050	AGGREGATE SUBGRADE, 12"	SQ YD	6,238	6,238		
Z0013798	CONSTRUCTION LAYOUT	L SUM	1	1		
Z0030255	IMPACT ATTENUATORS, TEMPORARY (FULLY REDIRECTIVE, NARROW), TEST LEVEL 2	EACH	8	8		
Z0056220	SAND MODULE IMPACT ATTENUATOR TO BE REMOVED	EACH	16	16		
⊙ Z0076600	TRAINEES	HOUR	2,000	2,000		
* X0325754	REPLACEMENT OF SENSORS FOR ROADWAY WEATHER INFORMATION SYSTEM	L SUM	1		0.5	0.5

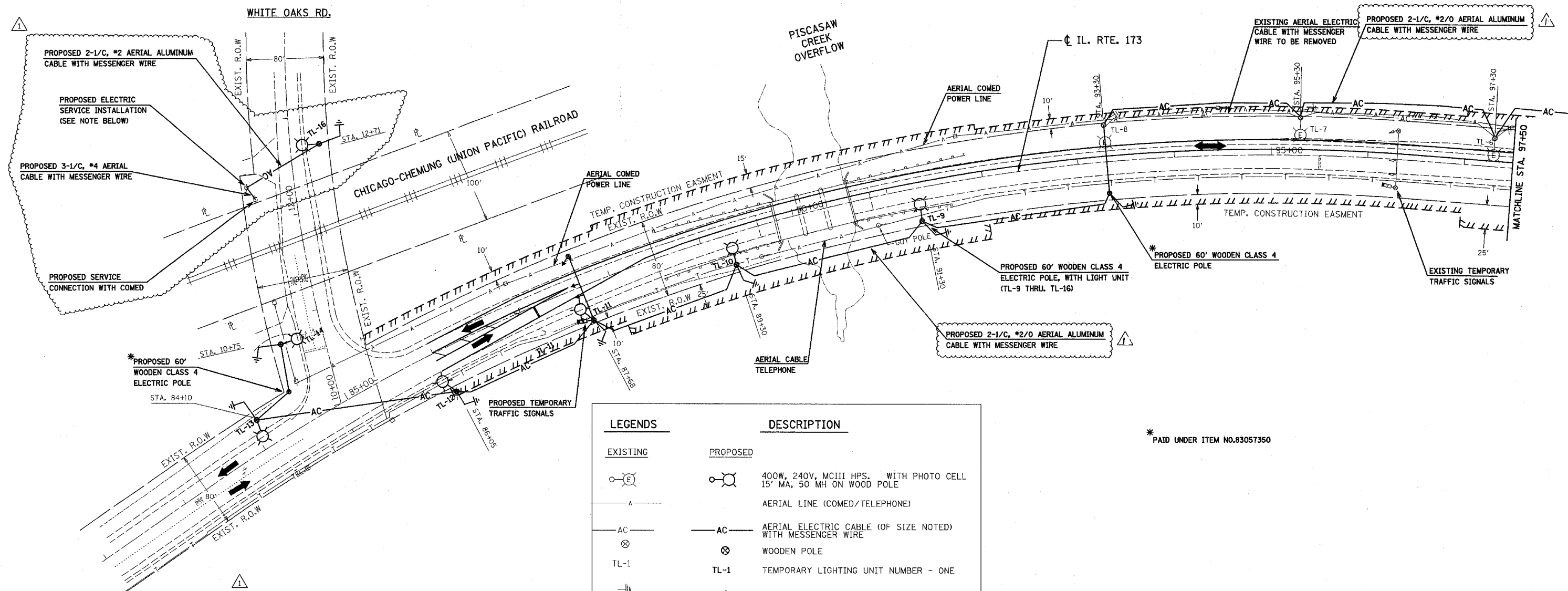
⊙ Y080
* SPECIALTY ITEMS

Rev. 6-5-07

CR
CHRISTIAN-ROGE & ASSOCIATES, INC.
 ENGINEERS-PLANNERS-SURVEYORS
 211 WEST WACKER DRIVE
 CHICAGO, ILLINOIS 60606
 1-312-372-2023 FAX: 1-312-372-8274

REVISIONS	
NAME	DATE

ILLINOIS DEPARTMENT OF TRANSPORTATION
 SUMMARY OF QUANTITIES
 ILLINOIS ROUTE 173
 SCALE: NONE
 DATE: APRIL 25, 2007
 DRAWN BY: A.C.S.
 CHECKED BY: S.J.P.



NOTE: PROPOSED ITEM "ELECTRIC SERVICE INSTALLATION" SHALL INCLUDE ELECTRIC SERVICE DISCONNECT BOX (SEE DETAIL ON SHEET NO.41A) WITH ALL NECESSARY CABLES AND PARTS FOR ITS COMPLETE INSTALLATION AND OPERATION. IT WILL BE THE RESPONSIBILITY OF THE CONTRACTOR TO CHECK THAT THE AFORMENTIONED ITEM IS COMPATIBLE WITH THE SERVICE PROVIDED BY COMED.

LEGENDS	DESCRIPTION
EXISTING	PROPOSED

* PAID UNDER ITEM NO.83057350

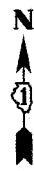
CR & A
CHRISTIAN-ROGE & ASSOCIATES, INC.
 ENGINEERS-PLANNERS-SURVEYORS
 211 WEST WACKER DRIVE
 CHICAGO, ILLINOIS 60606
 1-312-372-2023 FAX: 1-312-372-5274

REVISIONS	
NAME	DATE
ADDENDUM 1	05-01-07
ADDENDUM 2	05-15-07

ILLINOIS DEPARTMENT OF TRANSPORTATION
TEMPORARY LIGHTING PLAN
 IL. RTE. 173
 SCALE: 1" = 50'
 DATE: APRIL 25, 2007
 DRAWN BY: M.A.
 CHECKED BY: B.M./S.J.P.

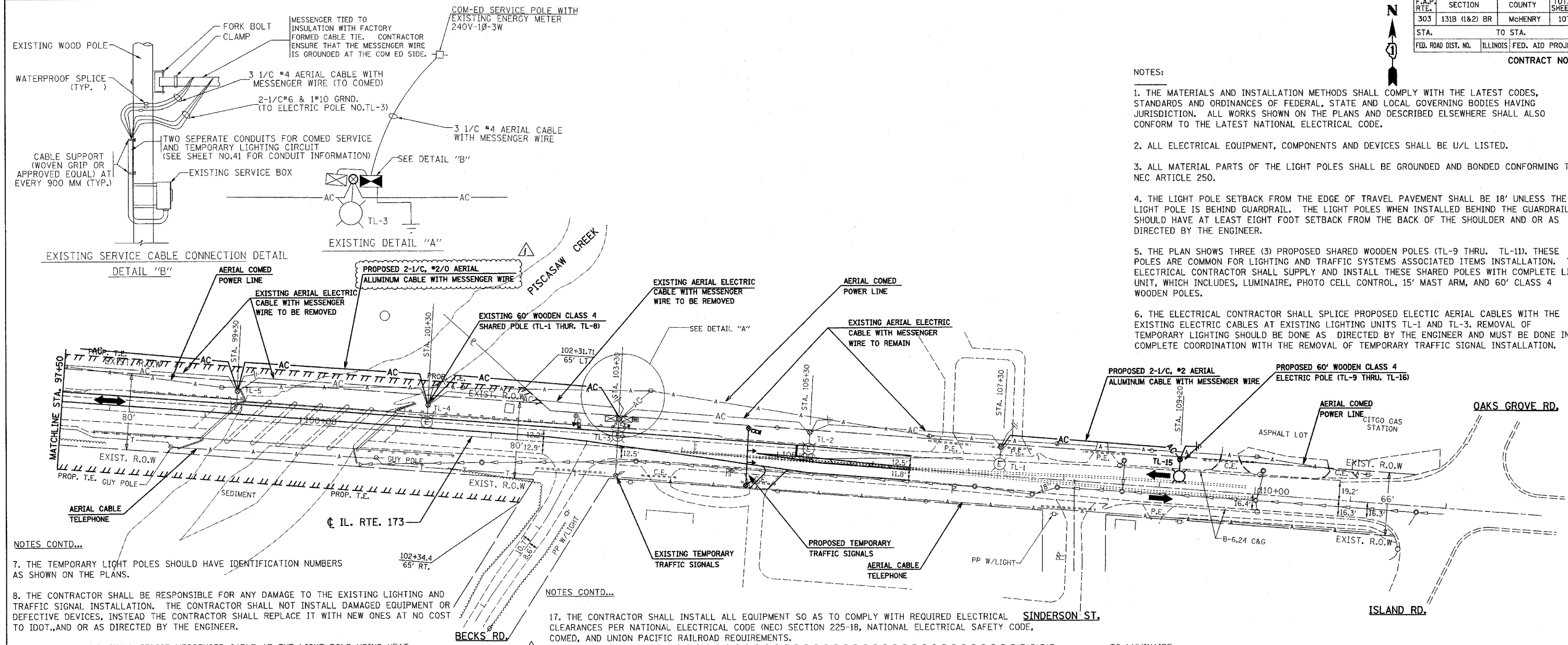
F.A.P. RTE.	SECTION	COUNTY	TOTAL SHEETS	SHEET NO.
303	131B (1&2) BR	McHENRY	107	40
STA.		TO STA.		
FED. ROAD DIST. NO.	ILLINOIS	FED. AID PROJECT		

CONTRACT NO. 60B83



NOTES:

1. THE MATERIALS AND INSTALLATION METHODS SHALL COMPLY WITH THE LATEST CODES, STANDARDS AND ORDINANCES OF FEDERAL, STATE AND LOCAL GOVERNING BODIES HAVING JURISDICTION. ALL WORKS SHOWN ON THE PLANS AND DESCRIBED ELSEWHERE SHALL ALSO CONFORM TO THE LATEST NATIONAL ELECTRICAL CODE.
2. ALL ELECTRICAL EQUIPMENT, COMPONENTS AND DEVICES SHALL BE U/L LISTED.
3. ALL MATERIAL PARTS OF THE LIGHT POLES SHALL BE GROUNDED AND BONDED CONFORMING TO NEC ARTICLE 250.
4. THE LIGHT POLE SETBACK FROM THE EDGE OF TRAVEL PAVEMENT SHALL BE 18' UNLESS THE LIGHT POLE IS BEHIND GUARDRAIL. THE LIGHT POLES WHEN INSTALLED BEHIND THE GUARDRAIL SHOULD HAVE AT LEAST EIGHT FOOT SETBACK FROM THE BACK OF THE SHOULDER AND OR AS DIRECTED BY THE ENGINEER.
5. THE PLAN SHOWS THREE (3) PROPOSED SHARED WOODEN POLES (TL-9 THRU. TL-11). THESE POLES ARE COMMON FOR LIGHTING AND TRAFFIC SYSTEMS ASSOCIATED ITEMS INSTALLATION. THE ELECTRICAL CONTRACTOR SHALL SUPPLY AND INSTALL THESE SHARED POLES WITH COMPLETE LIGHT UNIT, WHICH INCLUDES, LUMINAIRE, PHOTO CELL CONTROL, 15' MAST ARM, AND 60' CLASS 4 WOODEN POLES.
6. THE ELECTRICAL CONTRACTOR SHALL SPLICE PROPOSED ELECTRIC AERIAL CABLES WITH THE EXISTING ELECTRIC CABLES AT EXISTING LIGHTING UNITS TL-1 AND TL-3. REMOVAL OF TEMPORARY LIGHTING SHOULD BE DONE AS DIRECTED BY THE ENGINEER AND MUST BE DONE IN COMPLETE COORDINATION WITH THE REMOVAL OF TEMPORARY TRAFFIC SIGNAL INSTALLATION.



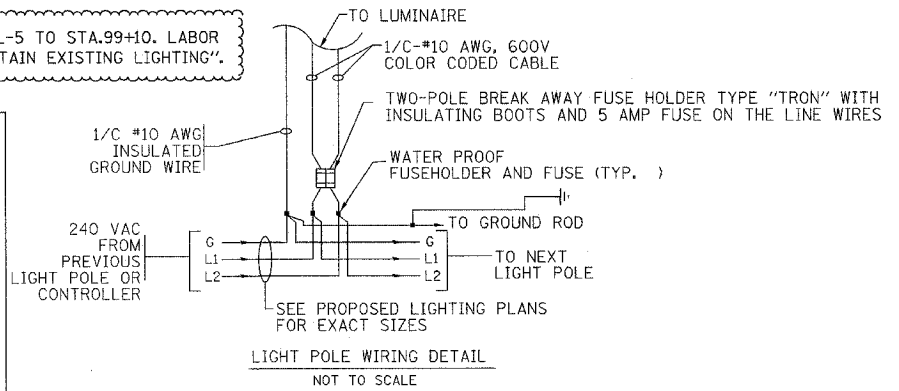
NOTES CONTD...

7. THE TEMPORARY LIGHT POLES SHOULD HAVE IDENTIFICATION NUMBERS AS SHOWN ON THE PLANS.
8. THE CONTRACTOR SHALL BE RESPONSIBLE FOR ANY DAMAGE TO THE EXISTING LIGHTING AND TRAFFIC SIGNAL INSTALLATION. THE CONTRACTOR SHALL NOT INSTALL DAMAGED EQUIPMENT OR DEFECTIVE DEVICES, INSTEAD THE CONTRACTOR SHALL REPLACE IT WITH NEW ONES AT NO COST TO IDOT, AND OR AS DIRECTED BY THE ENGINEER.
9. THE CONTRACTOR SHALL SPLICE MESSENGER CABLE AT THE LIGHT POLE USING HEAT SHRINKABLE CAPS WITH THE FACTORY APPLIED WATERPROOF SEALANT. THE INSTALLATION AND REQUIRED MATERIAL SHALL BE PART OF THE LIGHT POLE PAY ITEM.
10. IT IS THE CONTRACTOR'S RESPONSIBILITY TO CONTACT J. U. L. I. E. PRIOR TO THE START OF CONSTRUCTION AND COORDINATE LOCATION OF EXISTING UNDERGROUND UTILITIES. THE CONTRACTOR SHALL LOCATE, FLAG AND PROTECT ALL UNDERGROUND UTILITIES PRIOR TO AND DURING CONSTRUCTION. ANY DAMAGED TO EXISTING UTILITIES DURING CONSTRUCTION SHALL BE REPAIRED IMMEDIATELY AT NO COST TO IDOT.
11. THE MATERIAL QUANTITIES AS SHOWN IN THE ELECTRICAL SUMMARY OF QUANTITIES ARE APPROXIMATIONS ONLY. IT IS THE CONTRACTOR'S RESPONSIBILITY TO FIELD VERIFY ALL QUANTITIES PRIOR TO ORDERING MATERIALS.
12. THE CONTRACTOR SHALL FOLLOW THE CONSTRUCTION AND STAGING AS SHOWN ON THE PLANS OR AS DIRECTED BY THE ENGINEER. FURTHERMORE, THE CONTRACTOR SHALL COORDINATE ALL SUCH ACTIVITIES BEING DONE IN THE SAME AREA BY THE UTILITY COMPANIES OR OTHER CONTRACTORS AND SETUP COORDINATION MEETINGS IF NECESSARY WITHOUT ANY ADDITIONAL FINANCIAL COMPENSATION.
13. THE PROPOSED TEMPORARY LIGHTING SHALL BE COMPLETED, TESTED, OPERATIONAL, AND VERIFIED BY IDOT BEFORE COMMENCEMENT OF ANY STAGE I TRAFFIC.
14. ALL AREAS DISTURBED UNDER THIS CONTRACT SHALL BE RESTORED TO THE ORIGINAL CONDITION OR BETTER TO THE SATISFACTION OF THE ENGINEER.
15. ALL EXISTING CABLES FROM CONTROLLER TO THE WEST UP TO POLE NO. TL-8 (BETWEEN ALL POLES FROM TL-3 THRU. TL-8) SHALL BE REMOVED AND REPLACED WITH PROPOSED AERIAL CABLE 2-1/2\"/>
- 16. LIGHTING SHALL BE KEPT OPERATIONAL AND ACTIVE FROM ONE HOUR BEFORE SUNSET TO ONE HOUR AFTER SUNRISE, AS PER NATIONAL ELECTRICAL CODE OVERHEAD SPANS OF AERIAL CABLE AND MESSENGER WIRE MUST HAVE A VERTICAL CLEARANCE OF 18' MINIMUM ABOVE THE GROUND AT ALL TIMES AND AT ALL LOCATIONS ON THE PROJECT.

NOTES CONTD...

17. THE CONTRACTOR SHALL INSTALL ALL EQUIPMENT SO AS TO COMPLY WITH REQUIRED ELECTRICAL CLEARANCES PER NATIONAL ELECTRICAL CODE (NEC) SECTION 225-18, NATIONAL ELECTRICAL SAFETY CODE, COMED, AND UNION PACIFIC RAILROAD REQUIREMENTS.
18. DURING STAGE II CONSTRUCTION THE CONTRACTOR SHALL RELOCATE POLE NO. TL-5 TO STA. 99+10. LABOR AND MATERIAL FOR THIS WORK SHALL BE INCLUDED IN THE UNIT PRICE FOR "MAINTAIN EXISTING LIGHTING".

LEGENDS	DESCRIPTION
EXISTING	PROPOSED
AC	AC
TL-1	TL-1
	400W, 240V, MCIII HPS. WITH PHOTO CELL 15' MA, 50 MH ON WOOD POLE
	AERIAL LINE (COMED/TELEPHONE)
	AERIAL ELECTRIC CABLE (OF SIZE NOTED) WITH MESSENGER WIRE
	WOODEN POLE
	TEMPORARY LIGHTING UNIT NUMBER - ONE
	5/8" x 10' GROUND ROD
	COMBINATION LIGHTING AND TRAFFIC POLE MOUNTED ELECTRICAL SERVICE BOX
	TRAFFIC CONTROLLER
	BATTERY BACKUP



CHRISTIAN-ROGE & ASSOCIATES, INC.
 ENGINEERS-PLANNERS-SURVEYORS
 211 WEST WACKER DRIVE
 CHICAGO, ILLINOIS 60606
 1-312-372-2023 FAX: 1-312-372-5274

REVISIONS	
NAME	DATE
ADDENDUM 1	05-01-07
ADDENDUM 2	05-15-07

ILLINOIS DEPARTMENT OF TRANSPORTATION

TEMPORARY LIGHTING PLAN
 IL. RTE. 173

SCALE: 1" = 50'
 DATE: APRIL 25, 2007
 DRAWN BY: M.A.
 CHECKED BY: B.M.A./S.J.F.

F.A.P. NO.	SECTION	COUNTY	TOTAL SHEETS	SHEET NO.
303	131B(1&2)BR	McHENRY	107	43
STA.		TO STA.		
FED. ROAD DIST. NO.	ILLINOIS	FED. AID PROJECT		

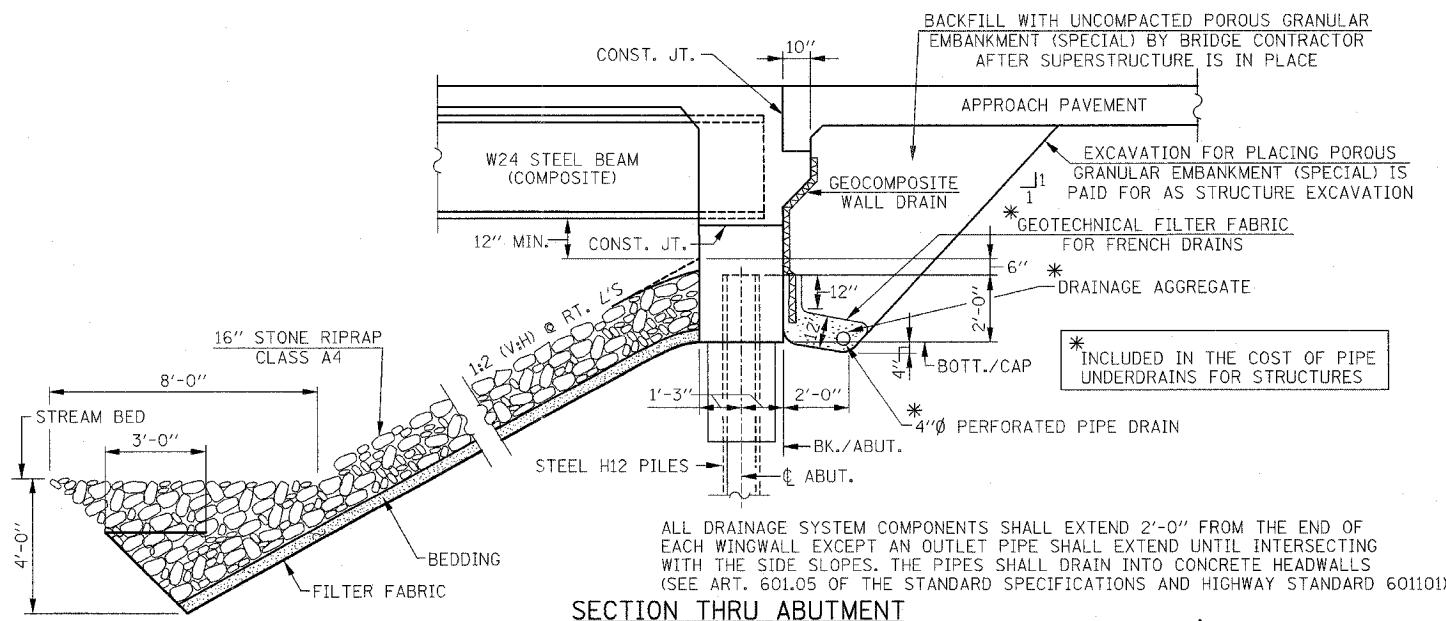
CONTRACT NO. 60B83

TOTAL BILL OF MATERIAL

ITEM	UNIT	SUPER	SUB	TOTAL
POROUS GRANULAR EMBANKMENT (SPECIAL)	CU. YD.	-	107	107
STONE RIPRAP, CLASS A4	SQ. YD.	-	490	490
FILTER FABRIC	SQ. YD.	-	402	402
STRUCTURE EXCAVATION	CU. YD.	-	223	223
REMOVAL OF EXISTING STRUCTURES NO. 2	EACH	-	-	1
CONCRETE STRUCTURES	CU. YD.	-	83.1	83.1
CONCRETE SUPERSTRUCTURES	CU. YD.	144	-	144
BRIDGE DECK GROOVING	SQ. YD.	391	-	391
PROTECTIVE COAT	SQ. YD.	486	-	486
REINFORCEMENT BARS, EPOXY COATED	LB.	28,080	11,820	39,900
FURNISHING STEEL PILES HP 12x53	FOOT	-	1,026	1,026
DRIVING PILES HP 12x53	FOOT	-	1,026	1,026
TEST PILES, STEEL HP 12x53	EACH	-	3	3
NAME PLATES	EACH	1	-	1
PIPE UNDERDRAINS FOR STRUCTURES, 4"	FOOT	-	158	158
GEOCOMPOSITE WALL DRAIN	SQ. YD.	-	56	56
CONCRETE ENCASEMENT	CU. YD.	-	18.9	18.9
FURNISHING AND ERECTING STRUCTURE STEEL	L.S.	0.30	-	0.30
STUD SHEAR CONNECTORS	EACH	2,814	-	2,814
TEMPORARY SHEET PILING	SQ. FT.	-	743	743
BAR SPLICERS	EACH	341	48	389
PILE SHOES	EACH	-	21	21
ANCHOR BOLTS 1	EACH	42	-	42
UNDERWATER STRUCTURE EXCAVATION PROTECTION, LOCATION 2	EACH	-	1	1

GENERAL NOTES:

1. CALCULATED WEIGHT OF STRUCTURAL STEEL = 58,000 LBS. (M270, GRADE 50) - 6,000 LBS. (M270, GRADE 36)
2. FASTENERS SHALL BE AASHTO M164 TYPE I, MECHANICALLY GALVANIZED BOLTS, BOLTS 3/4 IN. Ø, HOLES 1/8 IN. Ø, UNLESS OTHERWISE NOTED.
3. NO FIELD WELDING IS PERMITTED EXCEPT AS SPECIFIED IN THE CONTRACT DOCUMENTS.
4. BEARING SEAT SURFACES SHALL BE CONSTRUCTED OR ADJUSTED TO THE DESIGNATED ELEVATIONS WITHIN A TOLERANCE OF 1/8 IN. (0.01 FT.). ADJUSTMENT SHALL BE MADE EITHER BY GRINDING THE SURFACE OF BY SHIMMING THE BEARINGS.
5. LOAD CARRYING COMPONENTS DESIGNATED "NTR" SHALL CONFORM TO THE SUPPLEMENTAL REQUIREMENTS FOR NOTCH TOUGHNESS, ZONE 2.
6. THE INORGANIC ZINC RICH PRIMER/ACRYLIC/ACRYLIC PAINT SYSTEM SHALL BE USED FOR SHOP AND FIELD PAINTING OF NEW STRUCTURAL STEEL EXCEPT WHERE OTHERWISE NOTED. THE COLOR OF THE FINAL FINISH COAT FOR ALL INTERIOR STEEL SURFACES SHALL BE GRAY, MUNSELL NO. 5B 7/1. THE COLOR OF THE FINAL FINISH COAT FOR THE EXTERIOR AND BOTTOM FLANGE OF THE FASCIA BEAMS SHALL BE REDDISH BROWN MUNSELL NO. 2.5YR 3/4. SEE SPECIAL PROVISION FOR "CLEANING AND PAINTING NEW METAL STRUCTURES".
7. REINFORCEMENT BARS SHALL CONFORM TO THE REQUIREMENTS OF ASTM A 706 GR. 60 (IL MODIFIED) SEE SPECIAL PROVISIONS.
8. REINFORCEMENT BARS DESIGNATED (E) SHALL BE EPOXY COATED.
9. LAYOUT OF SLOPE PROTECTION MAY BE VARIED TO SUIT GROUND CONDITIONS IN THE FIELD AS DIRECTED BY THE ENGINEER.
10. FOR PAVEMENT REMOVAL AND CHANNEL EXCAVATION BETWEEN EXISTING AND NEW ABUTMENTS, SEE ROADWAY PLANS.
11. FOR CLEANING OUT AND RESHAPING CHANNEL, SEE ROADWAY PLANS. REMOVAL OF EXISTING DEBRIS IN THE CHANNEL IS INCLUDED WITH PAY ITEM FOR "CHANNEL EXCAVATION".
12. THE CONTRACTOR SHALL DRIVE TEST PILES TO 110% OF THE NOMINAL REQUIRED BEARING SPECIFIED IN PRODUCTION LOCATIONS AT SUBSTRUCTURES SPECIFIED OR APPROVED BY THE ENGINEER BEFORE ORDERING THE REMAINDER OF PILES.



Rev. 6-5-07

REVISIONS	
NAME	DATE

ILLINOIS DEPARTMENT OF TRANSPORTATION
 GENERAL NOTES & TOTAL BILL OF MATERIAL
 IL. RTE. 173
 OVER
 PISCASAW CREEK OVERFLOW
 F.A.P. RTE. 303 SECTION: 131B(1&2)BR
 McHENRY COUNTY STATION 90+20.80
 STRUCTURE NO. 056-0089

SCALE: DRAWN BY: D.L./F.M.
 DATE: APRIL 13, 2007 CHECKED BY: B.N.S./J.C.N.

CHRISTIAN-ROGE & ASSOC., INC.
 CHICAGO ILLINOIS

F.A.P. NO.	SECTION	COUNTY	TOTAL SHEETS	SHEET NO.
303	131B(1&2)BR	McHENRY	107	66
STA.	TO STA.			
FED. ROAD DIST. NO.	ILLINOIS	FED. AID PROJECT		

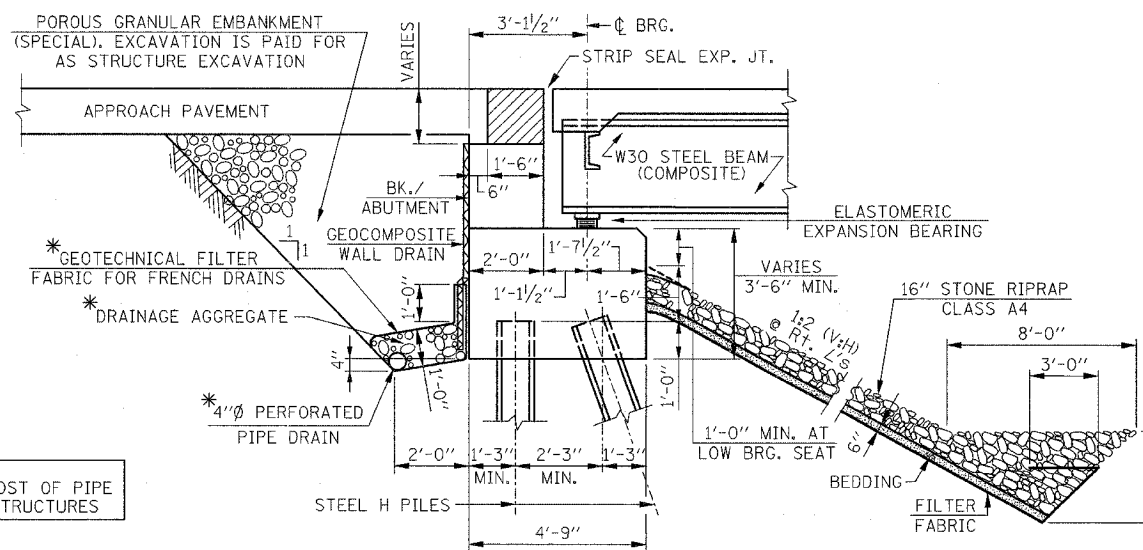
CONTRACT NO. 60883

TOTAL BILL OF MATERIAL

ITEM	UNIT	SUPER	SUB	TOTAL
POROUS GRANULAR EMBANKMENT (SPECIAL)	CU. YD.	-	133.7	133.7
STRUCTURE EXCAVATION	CU. YD.	-	264.3	264.3
REMOVAL OF EXISTING STRUCTURES NO. 1	EACH	-	-	1
CONCRETE STRUCTURES	CU. YD.	-	232.9	232.9
CONCRETE SUPERSTRUCTURES	CU. YD.	253.7	-	253.7
BRIDGE DECK GROOVING	SQ. YD.	772	-	772
PROTECTIVE COAT	SQ. YD.	966	-	966
REINFORCEMENT BARS, EPOXY COATED	LB.	55,020	30,850	85,870
FURNISHING STEEL PILES HP 12x53	FOOT	-	2,624	2,624
DRIVING PILES HP 12x53	FOOT	-	2,624	2,624
TEST PILES, STEEL HP 12x53	EACH	-	4	4
NAME PLATES	EACH	1	-	1
PIPE UNDERDRAINS FOR STRUCTURES, 4"	FOOT	-	182	182
GEOCOMPOSITE WALL DRAIN	SQ. YD.	-	28.9	28.9
CONCRETE ENCASEMENT	CU. YD.	-	26.8	26.8
FURNISHING AND ERECTING STRUCTURE STEEL	L.S.	0.70	-	0.70
STUD SHEAR CONNECTORS	EACH	4,767	-	4,767
TEMPORARY SHEET PILING	SQ. FT.	-	878	878
BAR SPLICERS	EACH	475	200	675
PILE SHOES	EACH	-	52	52
ANCHOR BOLTS 1"	EACH	56	-	56
UNDERWATER STRUCTURE EXCAVATION PROTECTION, LOCATION 1	EACH	-	1	1
PREFORMED JOINT STRIP SEAL	FOOT	115	-	115
DRAINAGE SCUPPERS, DS-11	EACH	2	-	2
ELASTOMERIC BEARING ASSEMBLY TYPE I	EACH	14	-	14
STONE RIPRAP, CLASS A4	SQ. YD.	-	645	645
FILTER FABRIC	SQ. YD.	-	631	631

GENERAL NOTES:

- CALCULATED WEIGHT OF STRUCTURAL STEEL = 155,000 LBS. (M270, GRADE 50) - 16,000 LBS. (M270, GRADE 36).
- FASTENERS SHALL BE AASHTO M164 TYPE I, MECHANICALLY GALVANIZED BOLTS, BOLTS 3/4 IN. Ø, HOLES 1/8 IN. Ø, UNLESS OTHERWISE NOTED.
- NO FIELD WELDING IS PERMITTED EXCEPT AS SPECIFIED IN THE CONTRACT DOCUMENTS.
- BEARING SEAT SURFACES SHALL BE CONSTRUCTED OR ADJUSTED TO THE DESIGNATED ELEVATIONS WITHIN A TOLERANCE OF 1/8 IN. (0.01 FT.). ADJUSTMENT SHALL BE MADE EITHER BY GRINDING THE SURFACE OF BY SHIMMING THE BEARINGS.
- THE INORGANIC ZINC RICH PRIMER/ACRYLIC/ACRYLIC PAINT SYSTEM SHALL BE USED FOR SHOP AND FIELD PAINTING OF NEW STRUCTURAL STEEL EXCEPT WHERE OTHERWISE NOTED. THE COLOR OF THE FINAL FINISH COAT FOR ALL INTERIOR STEEL SURFACES SHALL BE GRAY, MUNSELL NO. 5B 7/1. THE COLOR OF THE FINAL FINISH COAT FOR THE EXTERIOR AND BOTTOM FLANGE OF THE FASCIA BEAMS SHALL BE REDDISH BROWN MUNSELL NO. 2.5YR 3/4. SEE SPECIAL PROVISION FOR "CLEANING AND PAINTING NEW METAL STRUCTURES".
- REINFORCEMENT BARS SHALL CONFORM TO THE REQUIREMENTS OF ASTM A 706 GR. 60 (IL MODIFIED) SEE SPECIAL PROVISIONS.
- REINFORCEMENT BARS DESIGNATED (E) SHALL BE EPOXY COATED.
- LAYOUT OF SLOPE PROTECTION MAY BE VARIED TO SUIT GROUND CONDITIONS IN THE FIELD AS DIRECTED BY THE ENGINEER.
- FOR PAVEMENT REMOVAL AND CHANNEL EXCAVATION BETWEEN EXISTING AND NEW ABUTMENTS, SEE ROADWAY PLANS.
- FOR CLEANING OUT AND RESHAPING CHANNEL, SEE ROADWAY PLANS. REMOVAL OF EXISTING DEBRIS IN THE CHANNEL IS INCLUDED WITH PAY ITEM FOR "CHANNEL EXCAVATION".
- THE CONTRACTOR SHALL DRIVE TEST PILES TO 110% OF THE NOMINAL REQUIRED BEARING SPECIFIED IN PRODUCTION LOCATIONS AT SUBSTRUCTURES SPECIFIED OR APPROVED BY THE ENGINEER BEFORE ORDERING THE REMAINDER OF PILES.



SECTION THRU ABUTMENT

* INCLUDED IN THE COST OF PIPE UNDERDRAINS FOR STRUCTURES

ALL DRAINAGE SYSTEM COMPONENTS SHALL EXTEND 2'-0" FROM THE END OF EACH WINGWALL EXCEPT AN OUTLET PIPE SHALL EXTEND UNTIL INTERSECTING WITH THE SIDE SLOPES. THE PIPES SHALL DRAIN INTO CONCRETE HEADWALLS (SEE ART. 601.05 OF THE STANDARD SPECIFICATIONS AND HIGHWAY STANDARD 601101)

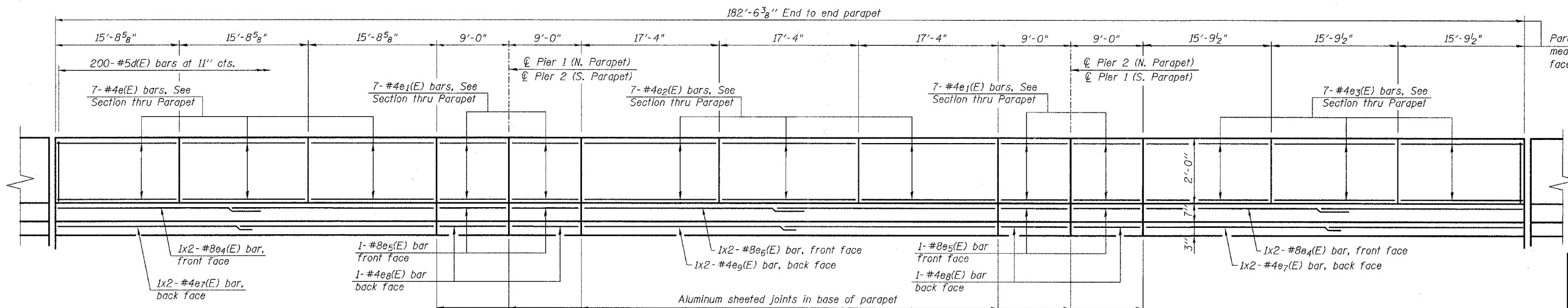
Rev. 6-5-07

REVISIONS	
NAME	DATE

ILLINOIS DEPARTMENT OF TRANSPORTATION
 GENERAL NOTES & TOTAL BILL OF MATERIAL
 IL. RTE. 173
 OVER
 PISCASAW CREEK
 F.A.P. RTE. 303 SECTION: 131B(1&2)BR
 McHENRY COUNTY STATION 100+00.00
 STRUCTURE NO. 056-0090
 SCALE: DATE: APRIL 2, 2007 DRAWN BY: D.L./F.M.
 CHECKED BY: B.N.S./J.C.N.
CHRISTIAN-ROGE & ASSOC., INC.
 CHICAGO ILLINOIS

FAP. NO.	SECTION	COUNTY	TOTAL SHEETS	SHEET NO.
303	131B(1&2)BR	McHENRY	107	72
STA. TO STA.		FED. AID PROJECT		

CONTRACT NO. 60B83



INSIDE ELEVATION OF NORTH PARAPET

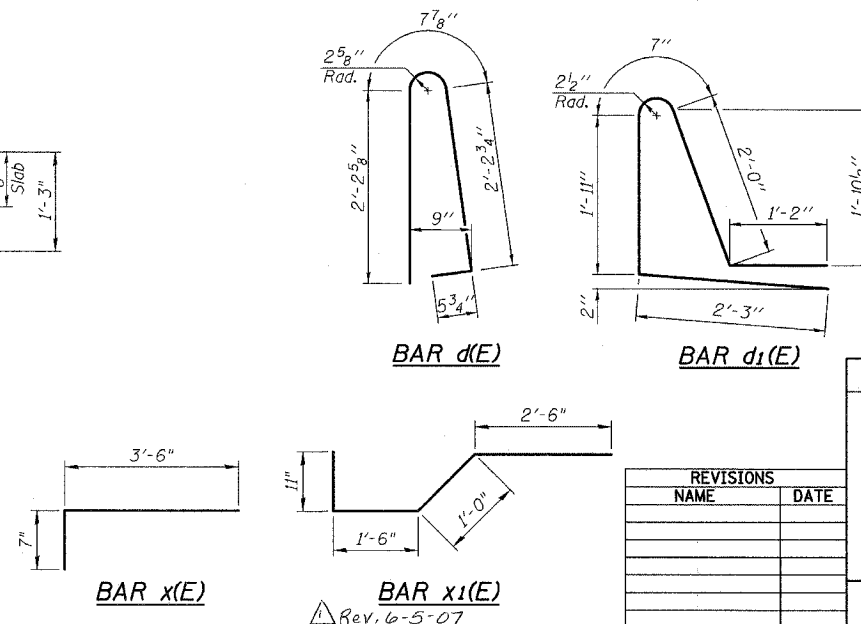
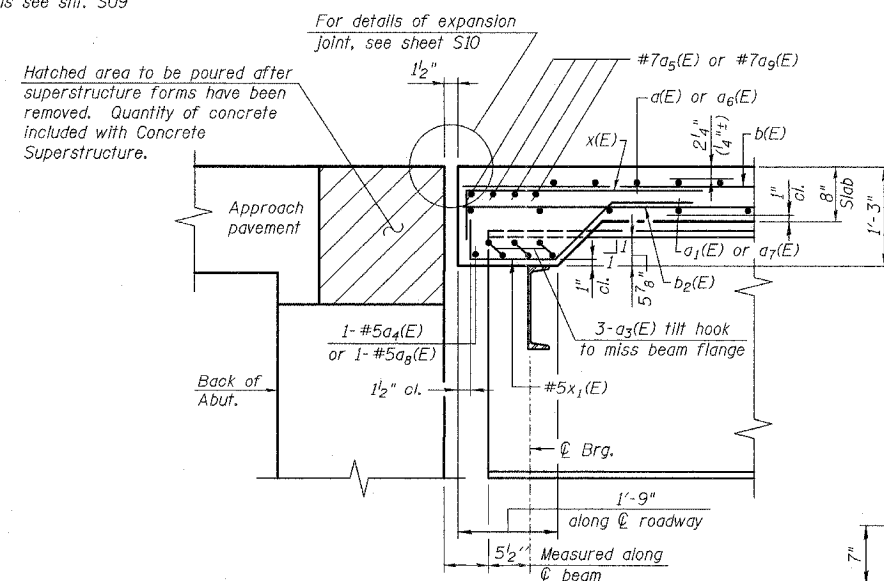
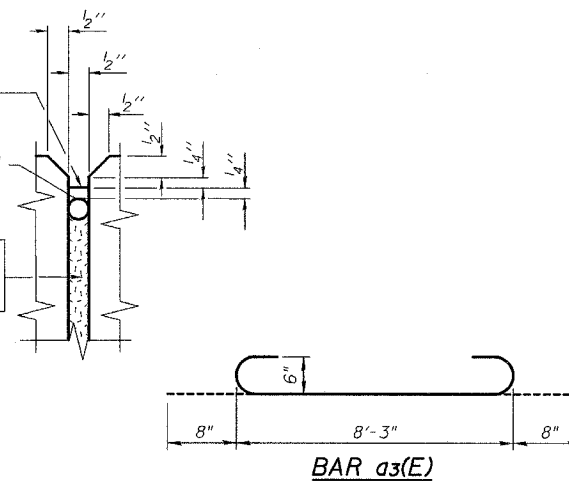
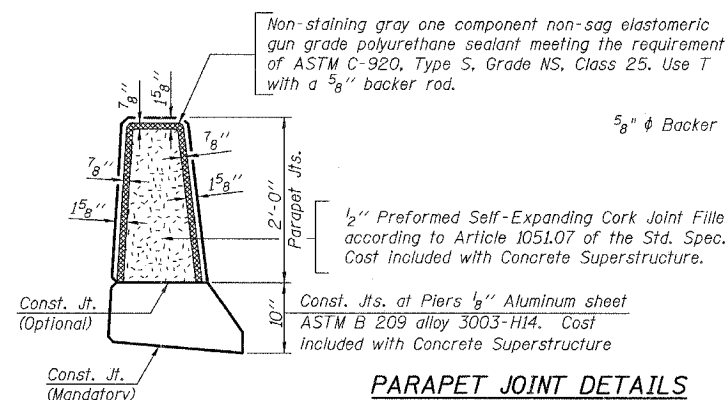
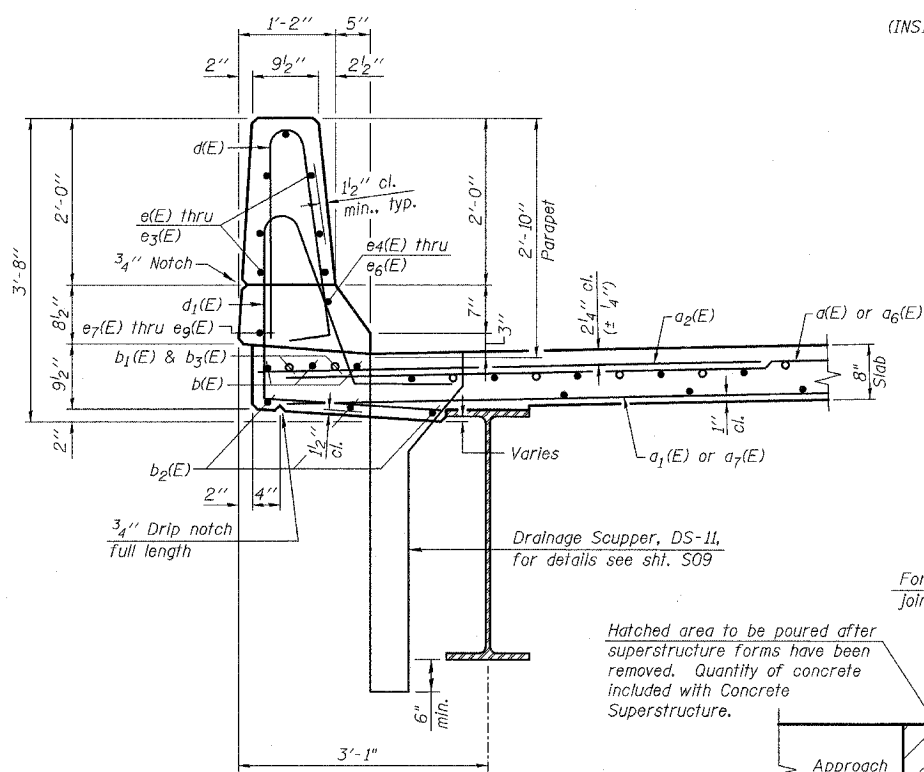
(LOOKING NORTH)
(INSIDE FACE OF SOUTH PARAPET OPPOSITE HAND)

MINIMUM BAR LAP

(Parapet)
#4 bar = 1'-4"
#8 bar = 3'-5"

SUPERSTRUCTURE BILL OF MATERIAL

Bar	No.	Size	Length	Shape
a(E)	245	#5	17'-2"	
a1(E)	220	#5	16'-10"	
a2(E)	122	#6	6'-0"	
a3(E)	30	#6	9'-7"	
a4(E)	2	#6	23'-7"	
a5(E)	8	#7	23'-10"	
a6(E)	245	#5	24'-11"	
a7(E)	220	#5	24'-7"	
a8(E)	2	#6	34'-3"	
a9(E)	8	#7	34'-6"	
a10(E)	16	#5	1'-6"	
b(E)	329	#5	27'-11"	
b1(E)	86	#6	30'-0"	
b2(E)	288	#5	24'-9"	
b3(E)	86	#6	13'-1"	
d(E)	400	#5	5'-7"	
d1(E)	400	#5	7'-11"	
e(E)	42	#4	15'-4"	
e1(E)	56	#4	8'-8"	
e2(E)	42	#4	17'-0"	
e3(E)	42	#4	15'-5"	
e4(E)	8	#8	25'-3"	
e5(E)	8	#8	8'-8"	
e6(E)	4	#8	27'-7"	
e7(E)	8	#4	24'-3"	
e8(E)	8	#4	8'-8"	
e9(E)	4	#4	26'-6"	
x(E)	94	#5	4'-11"	
x1(E)	72	#5	5'-11"	
Bar Splicers	Each		475	
Reinforcement Bars, Epoxy Coated	Pound		55,020	
Concrete Superstructure	Cu. Yds.		253.7	
Protective Coat	Sq. Yds.		966	
Bridge Deck Grooving	Sq. Yds.		772	



REVISIONS	
NAME	DATE

ILLINOIS DEPARTMENT OF TRANSPORTATION
PARAPETS, DECK DETAILS & SUPERSTRUCTURE BILL OF MATERIAL
 IL. RTE. 173 OVER
 PISCASAW CREEK
 F.A.P. RTE. 303 SECTION: 131B(1&2)BR
 McHENRY COUNTY STATION 100+00.00
 STRUCTURE NO. 056-0090
 SCALE: DATE: APRIL 2, 2007 DRAWN BY: D.L./F.M. CHECKED BY: B.N.S./J.C.N.
CHRISTIAN-ROGE & ASSOC., INC.
 CHICAGO ILLINOIS

Rev. 6-5-07