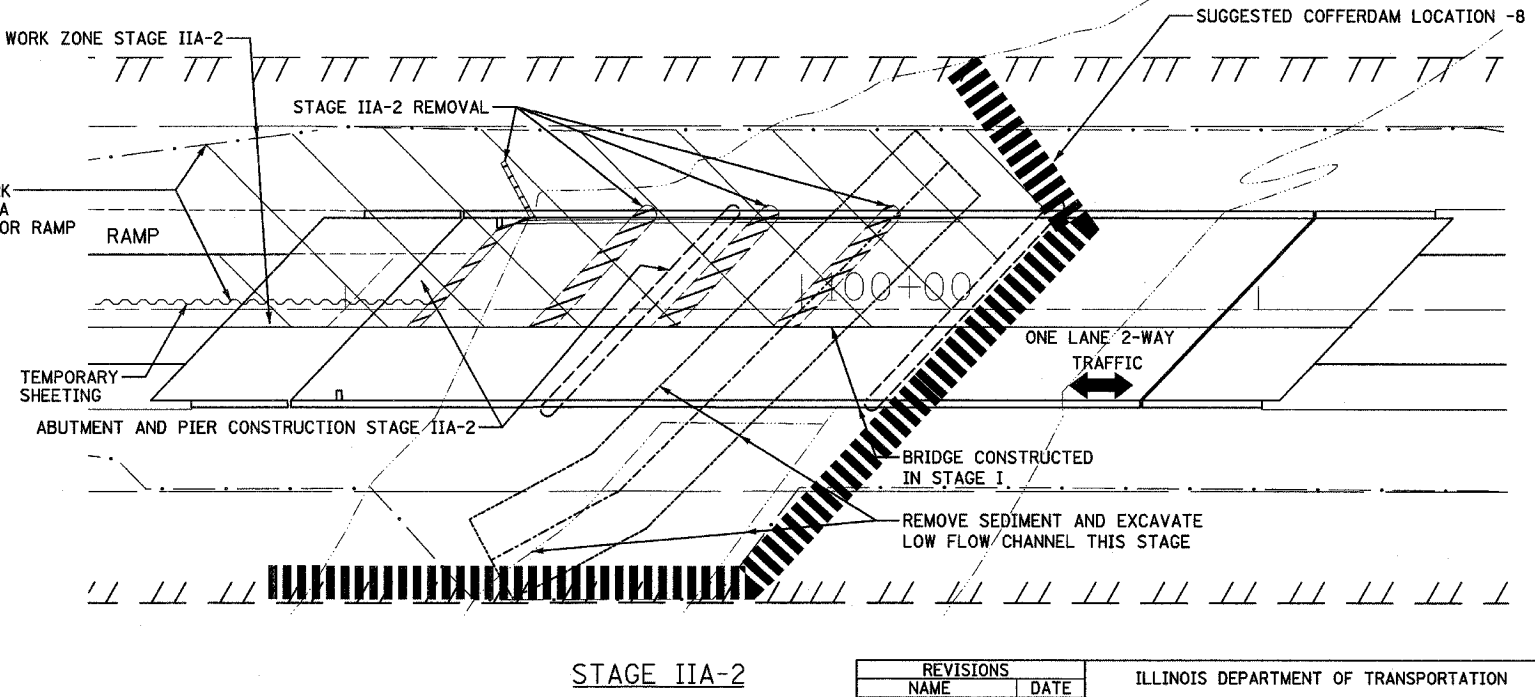
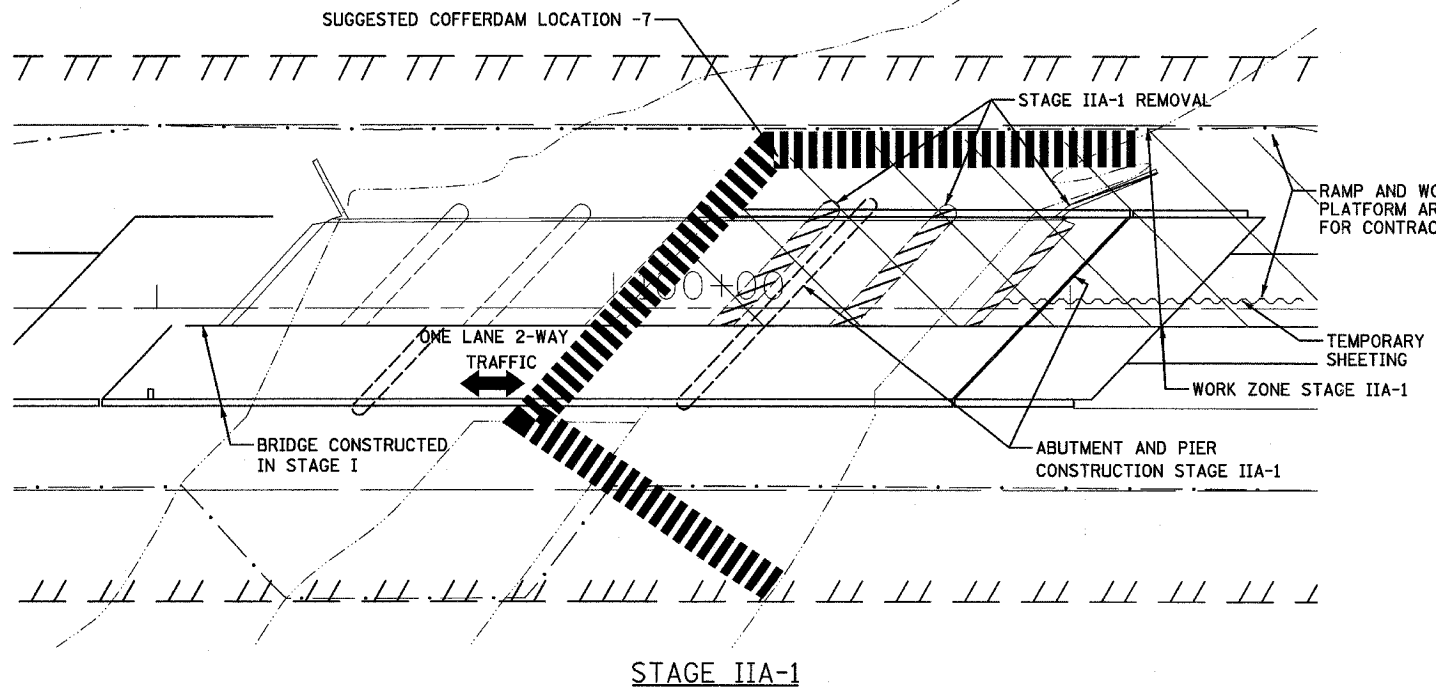
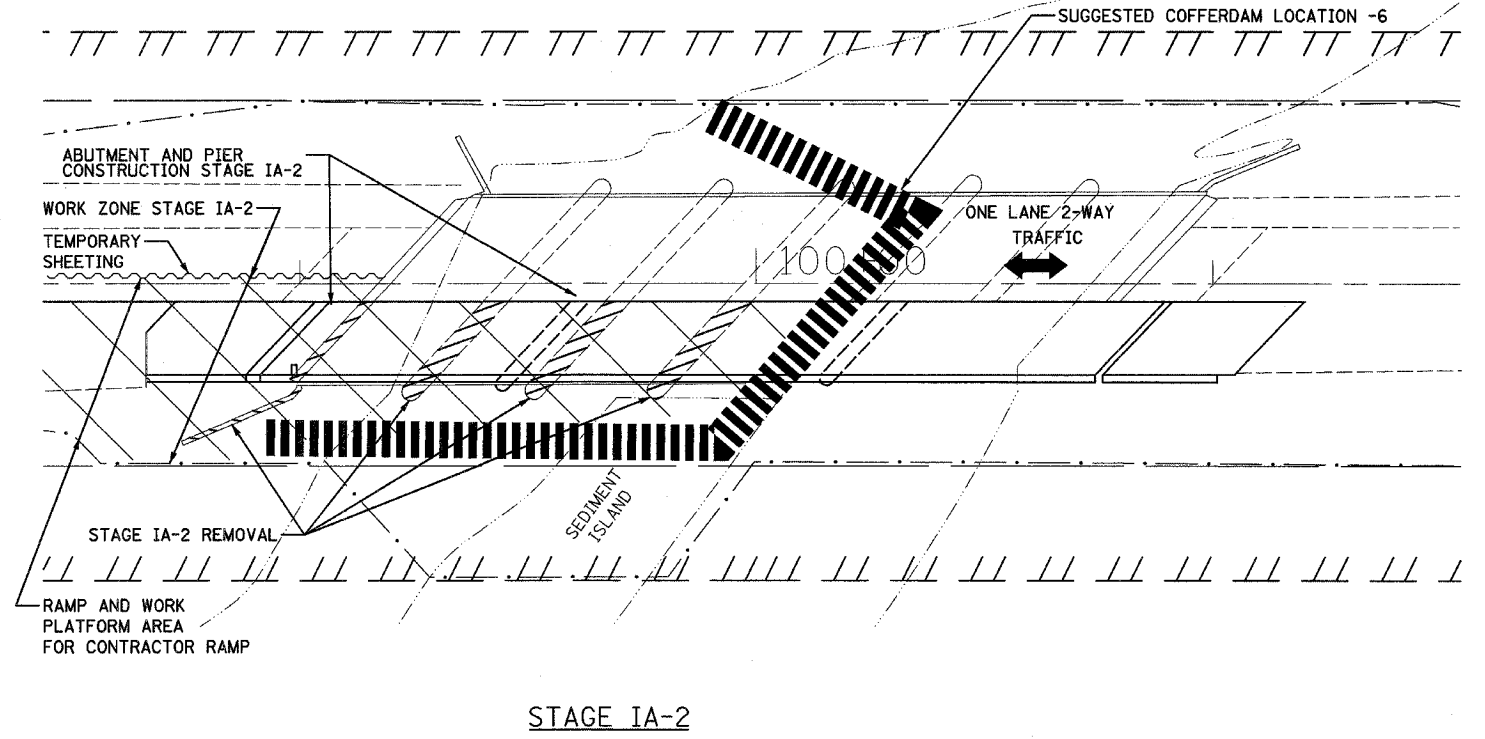
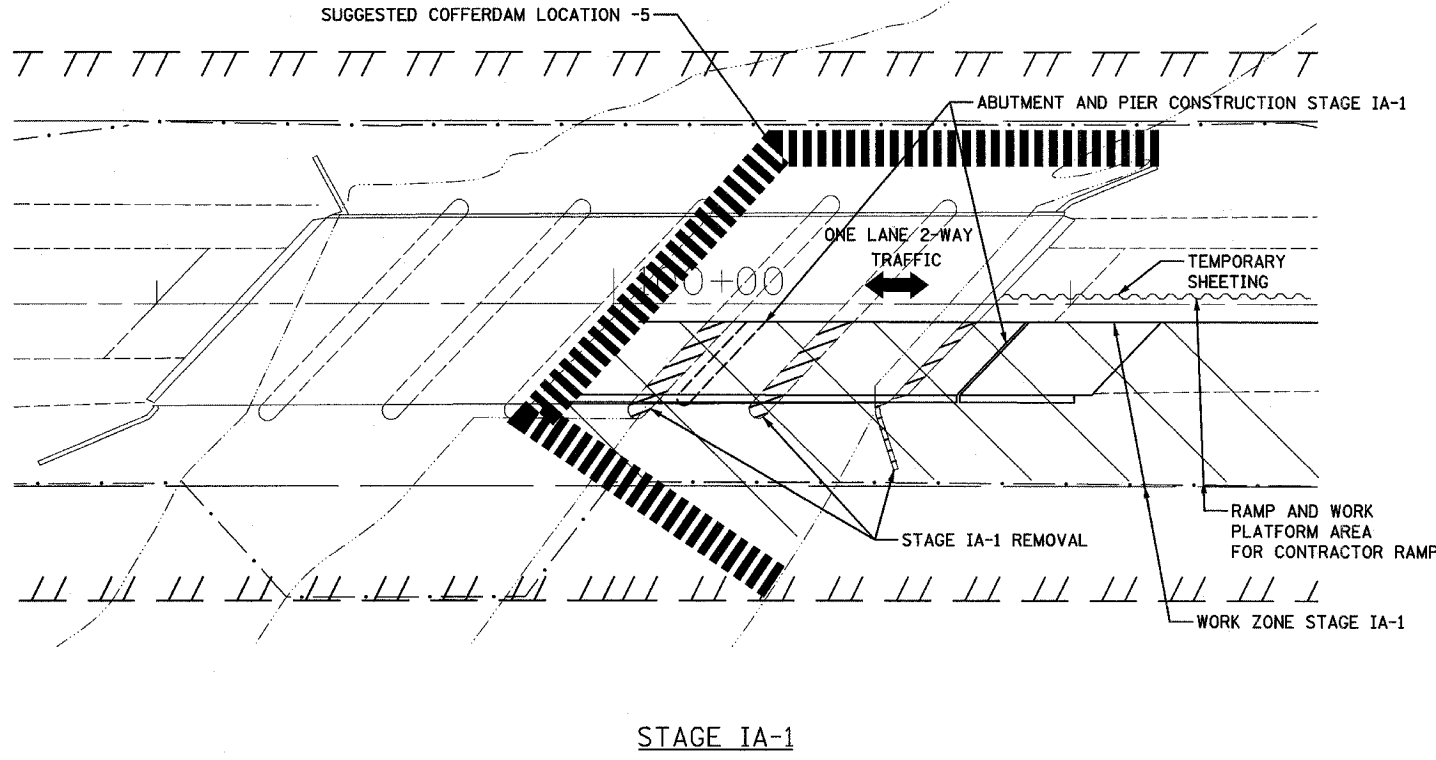


PISCASAW CREEK STRUCTURE - STAGED CONSTRUCTION



SCALE 1" = 20'

F.A.P. RTE.	SECTION	COUNTY	TOTAL SHEETS	SHEET NO.
303	131B (1&2) BR	MCHEMRY	107	26
STA.	TO STA.			
FED. ROAD DIST. NO.	ILLINOIS	FED. AID PROJECT		
CONTRACT NO. 60883				



CHRISTIAN-ROGE & ASSOCIATES, INC.
 ENGINEERS-PLANNERS-SURVEYORS
 211 WEST WACKER DRIVE
 CHICAGO, ILLINOIS 60606
 1-312-372-2023 FAX: 1-312-372-5274

REVISIONS	
NAME	DATE

ILLINOIS DEPARTMENT OF TRANSPORTATION
 SUGGESTED STAGED CONSTRUCTION
 ILLINOIS ROUTE 173 OVER
 PISCASAW CREEK
 SCALE: 1" = 20'
 DATE: APRIL 16, 2007
 DRAWN BY: A.C.S.
 CHECKED BY: S.J.P.