

F.A.P. RTE.	SECTION	COUNTY	TOTAL SHEETS	SHEET NO.
303	131B (1&2) BR	McHENRY	107	37
STA.	TO STA.			
FED. ROAD DIST. NO.	ILLINOIS	FED. AID PROJECT		

CONTRACT NO. 60B83



TEMPORARY TRAFFIC SIGNAL LEGEND

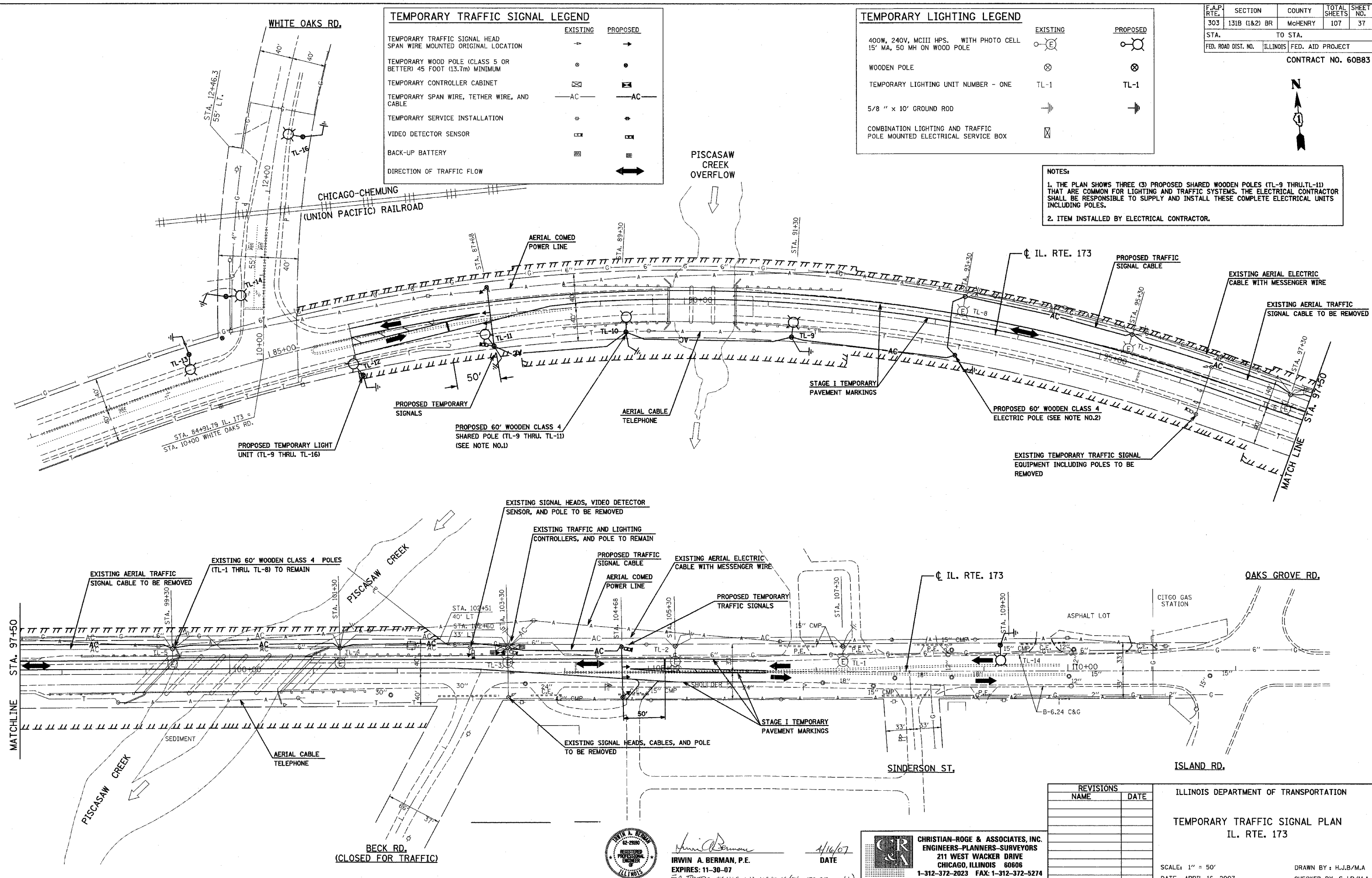
	EXISTING	PROPOSED
TEMPORARY TRAFFIC SIGNAL HEAD SPAN WIRE MOUNTED ORIGINAL LOCATION	⊙	→
TEMPORARY WOOD POLE (CLASS 5 OR BETTER) 45 FOOT (13.7m) MINIMUM	⊙	⊙
TEMPORARY CONTROLLER CABINET	⊠	⊠
TEMPORARY SPAN WIRE, TETHER WIRE, AND CABLE	—AC—	—AC—
TEMPORARY SERVICE INSTALLATION	⊕	⊕
VIDEO DETECTOR SENSOR	⊠	⊠
BACK-UP BATTERY	⊠	⊠
DIRECTION OF TRAFFIC FLOW	↔	↔

TEMPORARY LIGHTING LEGEND

	EXISTING	PROPOSED
400W, 240V, MCIII HPS. WITH PHOTO CELL 15' MA, 50 MH ON WOOD POLE	⊙	⊙
WOODEN POLE	⊗	⊗
TEMPORARY LIGHTING UNIT NUMBER - ONE	TL-1	TL-1
5/8" x 10' GROUND ROD	⊕	⊕
COMBINATION LIGHTING AND TRAFFIC POLE MOUNTED ELECTRICAL SERVICE BOX	⊠	⊠

NOTES:

1. THE PLAN SHOWS THREE (3) PROPOSED SHARED WOODEN POLES (TL-9 THRU TL-11) THAT ARE COMMON FOR LIGHTING AND TRAFFIC SYSTEMS. THE ELECTRICAL CONTRACTOR SHALL BE RESPONSIBLE TO SUPPLY AND INSTALL THESE COMPLETE ELECTRICAL UNITS INCLUDING POLES.
2. ITEM INSTALLED BY ELECTRICAL CONTRACTOR.



REVISIONS	
NAME	DATE

ILLINOIS DEPARTMENT OF TRANSPORTATION

TEMPORARY TRAFFIC SIGNAL PLAN
IL. RTE. 173

SCALE: 1" = 50'

DATE: APRIL 16, 2007

DRAWN BY: H.J.B./M.A
CHECKED BY: S.J.P./M.A



Irwin A. Berman
IRWIN A. BERMAN, P.E.
EXPIRES: 11-30-07
FOR TRAFFIC SIGNALS AND LIGHTING (SHEETS 37 TO 41)

4/16/07
DATE

CR & A
CHRISTIAN-ROGE & ASSOCIATES, INC.
ENGINEERS-PLANNERS-SURVEYORS
211 WEST WACKER DRIVE
CHICAGO, ILLINOIS 60606
1-312-372-2023 FAX: 1-312-372-5274