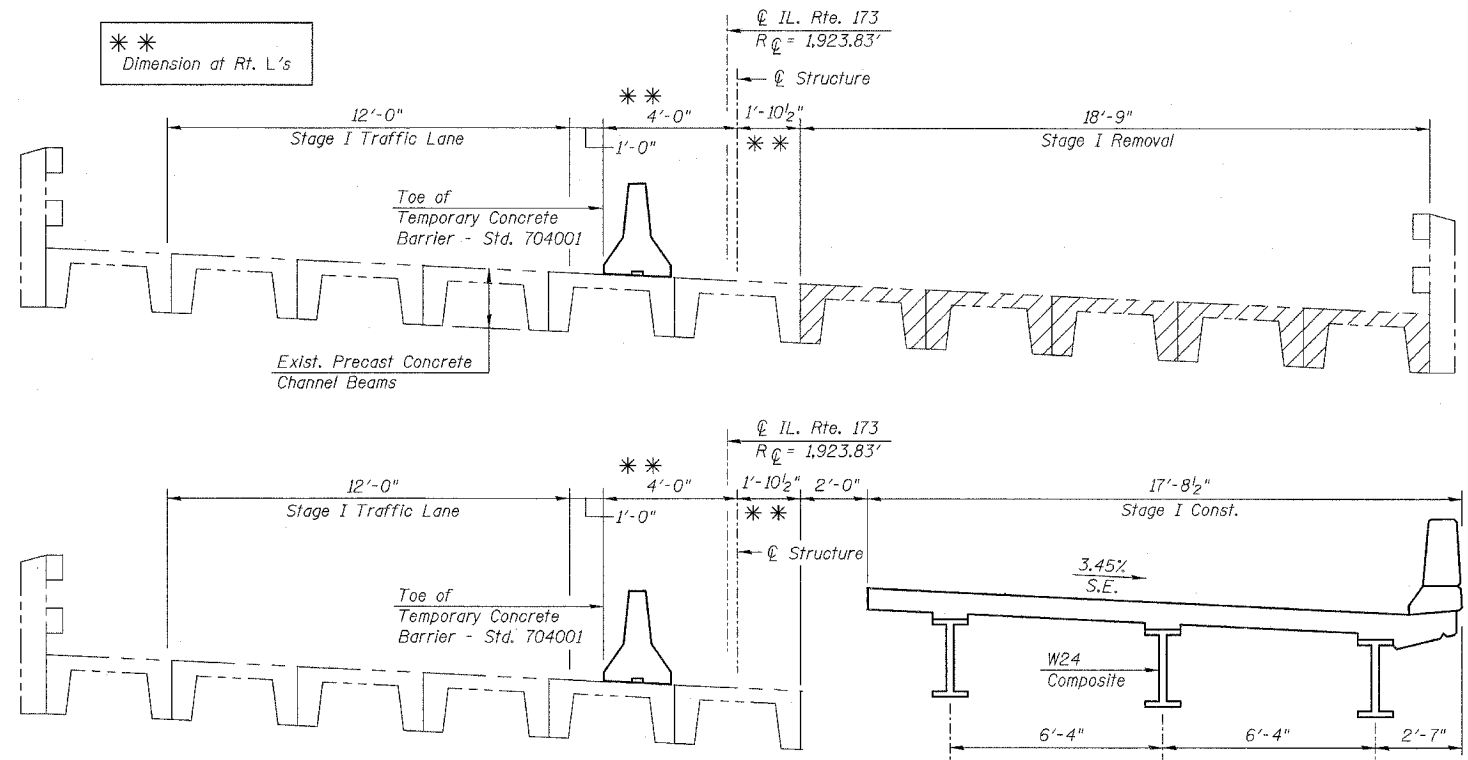
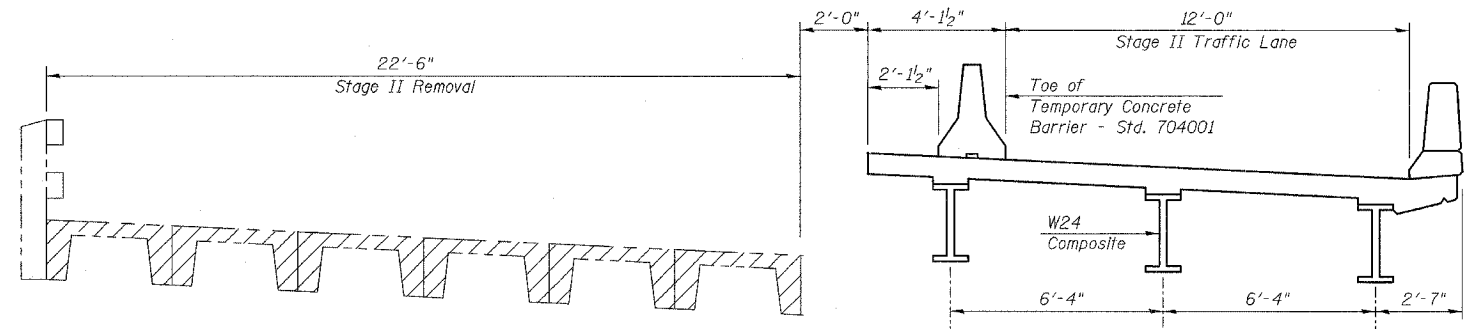


F.A.P. RTE.	SECTION	COUNTY	TOTAL SHEETS	SHEET NO.
303	131B(1&2)BR	McHENRY	107	44
STA.		TO STA.		
FED. ROAD DIST. NO.		ILLINOIS		FED. AID PROJECT

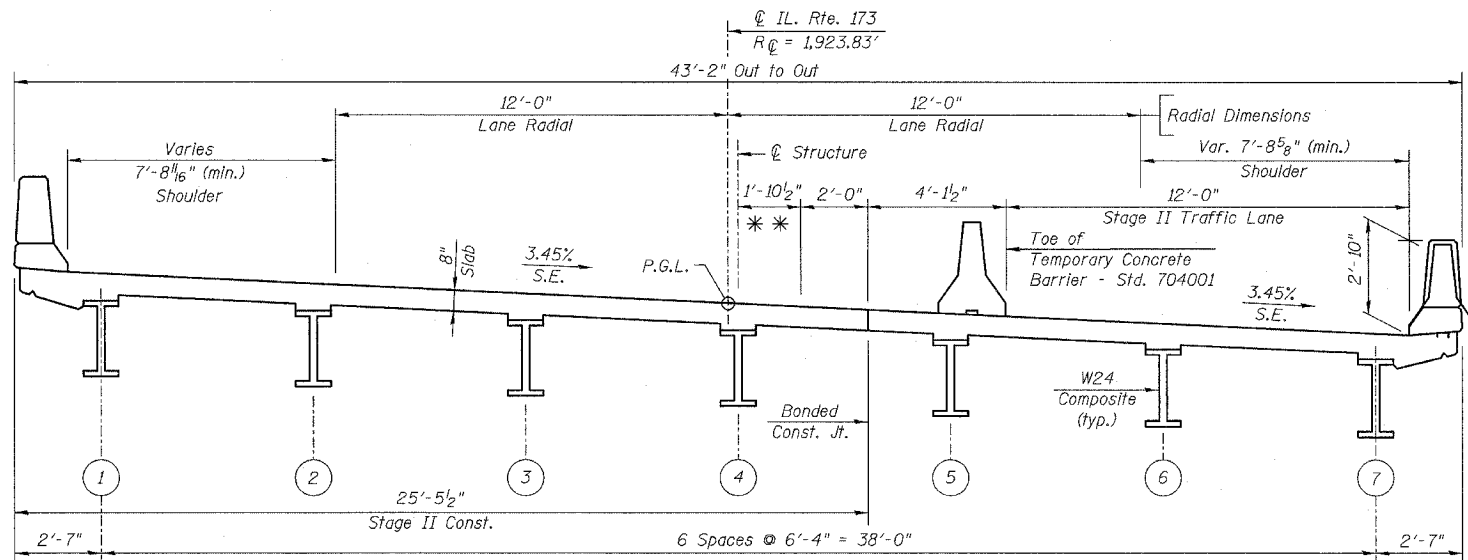
CONTRACT NO. 60B83



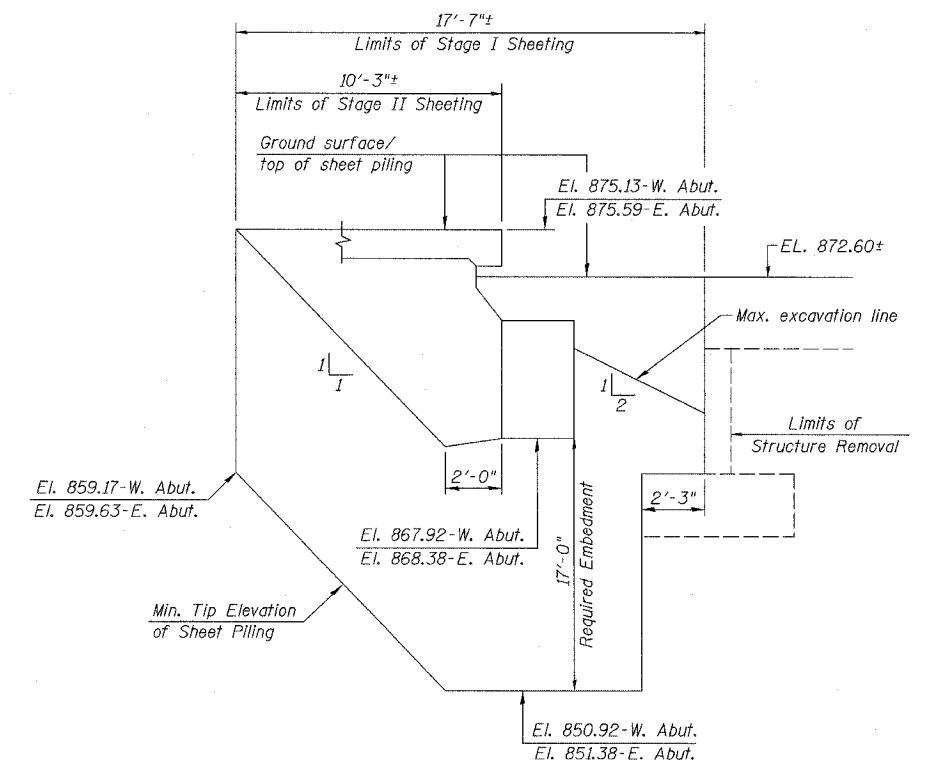
**STAGE I CONSTRUCTION**  
(LOOKING EAST)



**STAGE II REMOVAL**  
(LOOKING EAST)



**CROSS SECTION**  
(LOOKING EAST)



Sheet Piling shall be Anchored to the existing Abutment  
Minimum Embedment Depth = 17 ft.  
Minimum Section Modulus of Sheet Piling = 14.3 in<sup>3</sup>/ft.

**TEMPORARY SHEET PILING AT ABUTMENTS**

**Notes:**  
If the contractor chooses to alter the temporary cantilevered sheet piling design requirements shown on the plans, a design submittal including plan details and calculations will be required for review and acceptance by the engineer.

The contractor shall connect the first sheet to the existing abutment wall to ensure stability of sheets driven to the top of the existing footing. This connection shall be reviewed and accepted by the engineer and included in the cost for temporary sheet piling.

\*\*  
Dimension at Rt. L's

REVISIONS	
NAME	DATE

ILLINOIS DEPARTMENT OF TRANSPORTATION  
**CONSTRUCTION STAGING & TEMPORARY SHEET PILING**  
 IL. RTE. 173 OVER  
 PISCASAW CREEK OVERFLOW  
 F.A.P. RTE. 303 SECTION: 131B(1&2)BR  
 McHENRY COUNTY STATION 90+20.80  
 STRUCTURE NO. 056-0089  
 SCALE: DATE: APRIL 13, 2007  
 DRAWN BY: D.L./F.M.  
 CHECKED BY: B.N.S./J.C.N.  
**CHRISTIAN-ROGE & ASSOC., INC.**  
 CHICAGO ILLINOIS