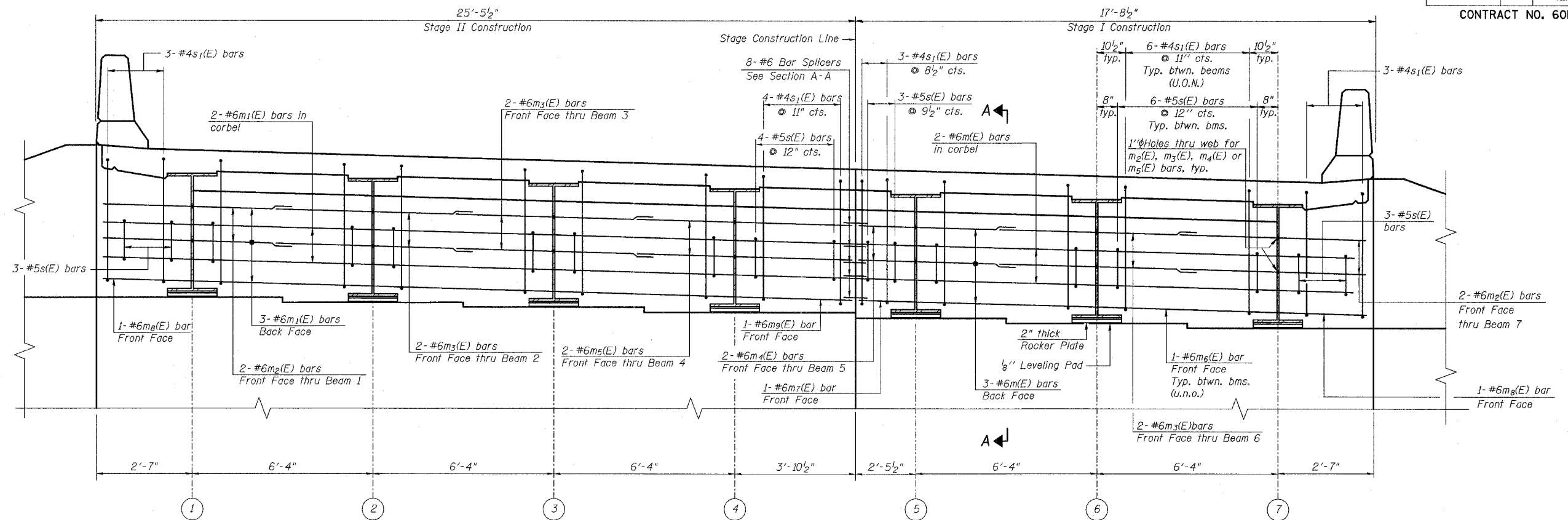


F.A.P. NO.	SECTION	COUNTY	TOTAL SHEETS	SHEET NO.
303	131B(1&2)BR	McHENRY	107	53
STA.	TO STA.			
FED. ROAD DIST. NO.	ILLINOIS	FED. AID PROJECT		

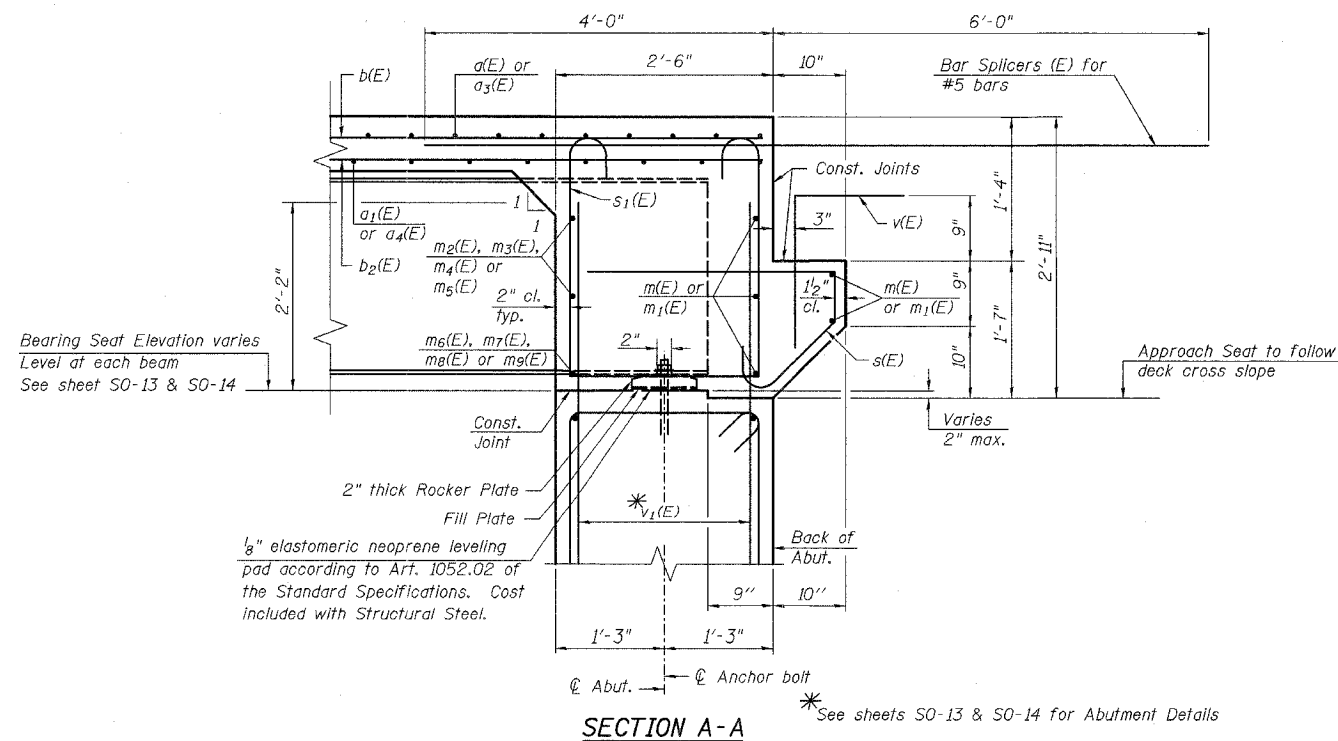
CONTRACT NO. 60B83



DIAPHRAGM ELEVATION AT EAST ABUTMENT
(LOOKING EAST)
(WEST ABUTMENT SIMILAR - OPPOSITE HAND)

LEGEND:
U.O.N. = Unless Otherwise Noted

MIN. BAR LAP
#6 bar = 2'-9"



Notes:
Reinforcement bars in diaphragm are billed with superstructure on sheet SO-08.
Concrete in diaphragm is included with Concrete Superstructure on sheet SO-08.
For details of bars s(E) & s1(E) see sheet SO-08.
The s(E) and s1(E) bars shall be placed parallel to the beams. Spacing for these bars shall be at right angles to the beams.
For details of bearings see sheet SO-11.

REVISIONS	
NAME	DATE

ILLINOIS DEPARTMENT OF TRANSPORTATION
DIAPHRAGM DETAILS AT ABUTMENTS
IL. RTE. 173
OVER
PISCASAW CREEK OVERFLOW
F.A.P. RTE. 303 SECTION: 131B(1&2)BR
McHENRY COUNTY STATION 90+20.80
STRUCTURE NO. 056-0089
SCALE: DRAWN BY: D.L./F.M.
DATE: APRIL 13, 2007 CHECKED BY: B.N.S./J.C.N.
CHRISTIAN-ROGE & ASSOC., INC.
CHICAGO ILLINOIS