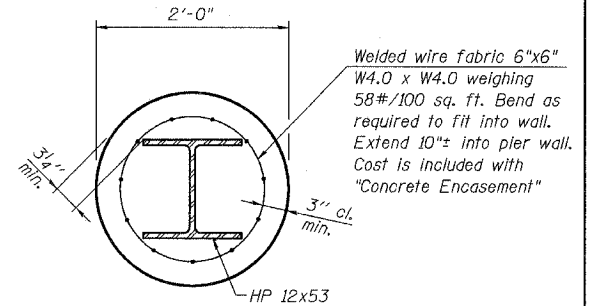


TOP PLAN

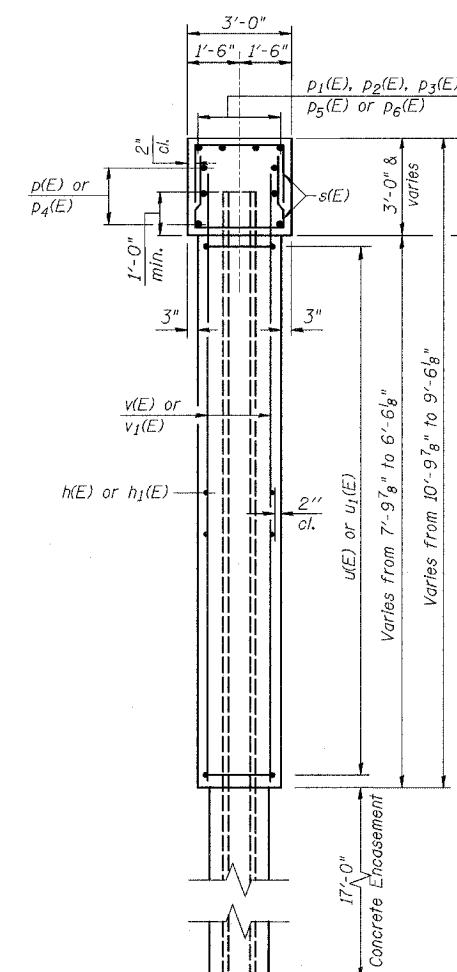
Notes:
Space reinforcement in cap to miss anchor bolts. Pour steps monolithically with cap.
The Steel H-Piles shall be in accordance with AASHTO M 270, Grade 50.
For details of Piles and Concrete Encasement, see Sheet SO-



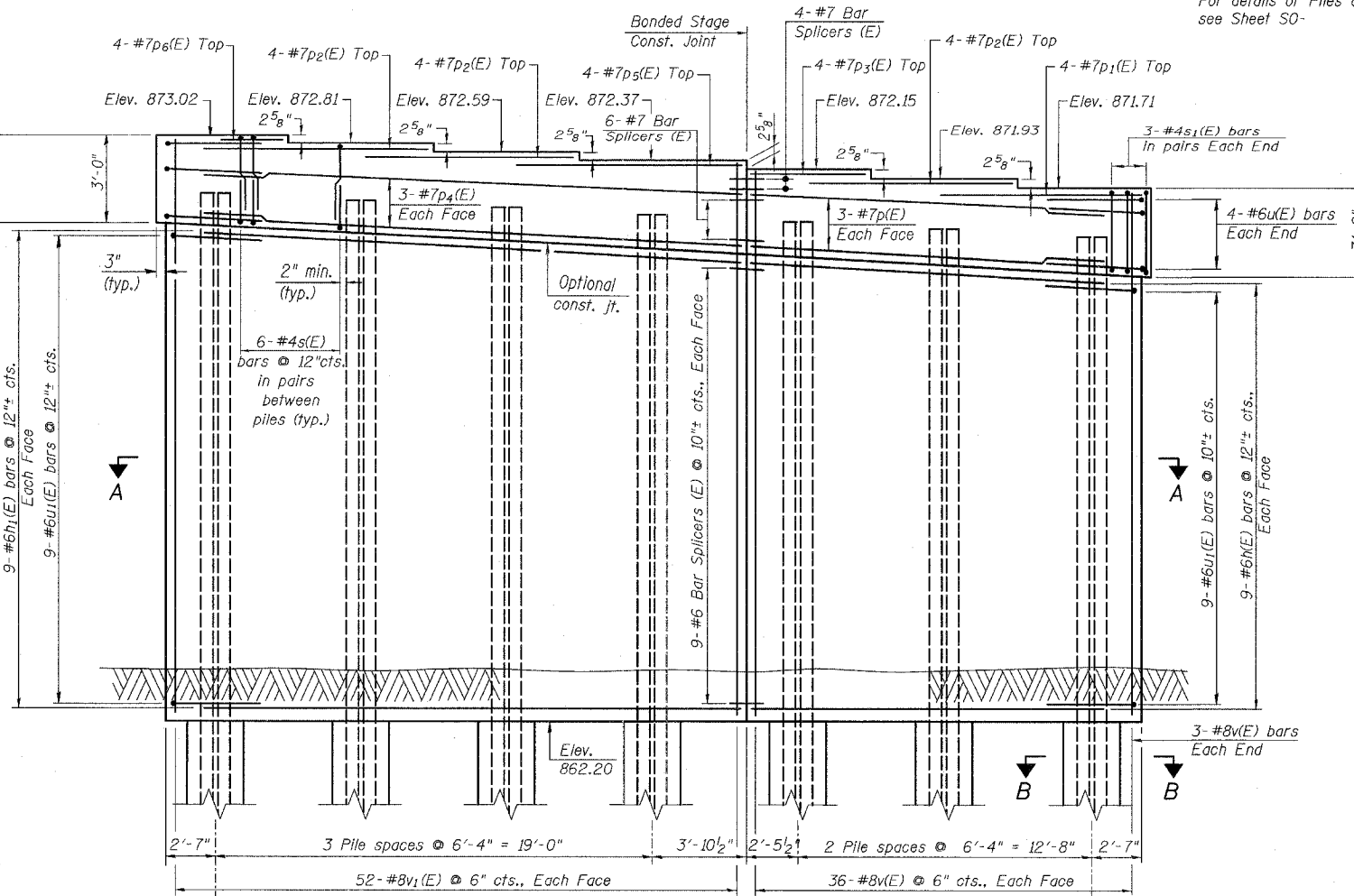
SECTION B-B
PILE ENCASEMENT DETAIL

BILL OF MATERIAL

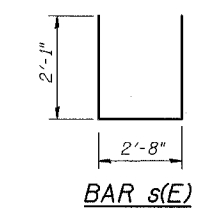
Bar No.	Size	Length	Shape
h(E)	#8	16'-4"	—
h ₁ (E)	#8	24'-1"	—
p(E)	#7	16'-4"	—
p ₁ (E)	#7	9'-5"	—
p ₂ (E)	#7	9'-9"	—
p ₃ (E)	#7	5'-3"	—
p ₄ (E)	#7	24'-1"	—
p ₅ (E)	#7	10'-6"	—
p ₆ (E)	#7	5'-8"	—
s(E)	#4	6'-10"	U
s ₁ (E)	#4	6'-7"	U
u(E)	#6	9'-4"	UU
u ₁ (E)	#6	8'-7"	UU
v(E)	#8	9'-1"	—
v ₁ (E)	#8	9'-9"	—
Structure Excavation	Cu. Yd.	11.4	
Concrete Structures	Cu. Yd.	43.2	
Reinforcement Bars, Epoxy Coated	Pound	7,260	
Furnishing Steel Piles HP 12X53	Foot	342	
Driving Piles	Foot	342	
Test Pile Steel HP 12X53	Each	1	
Concrete Encasement	Cu. Yd.	13.9	
Pile Shoes	Each	7	
Bar Splicers	Each	28	



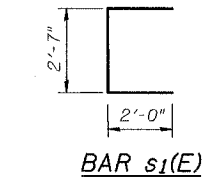
END VIEW



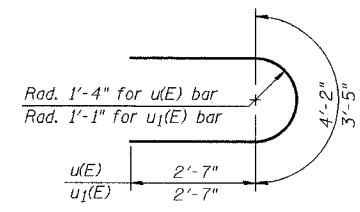
ELEVATION
(Looking East)



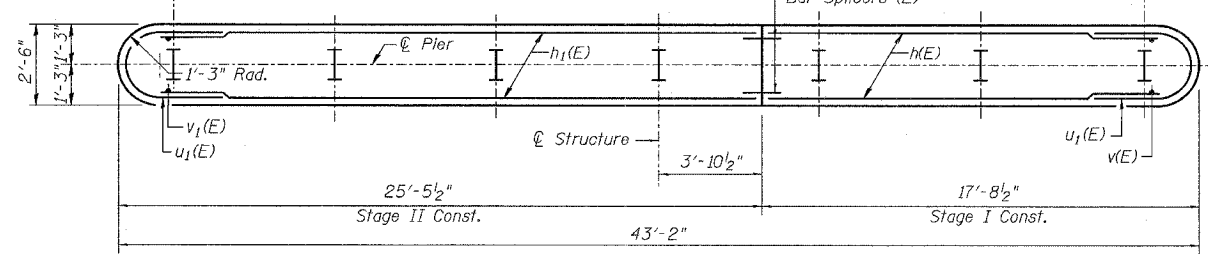
BAR s(E)



BAR s₁(E)



BARS u(E) & u₁(E)



SECTION A-A

PILE DATA

Type: Steel HP 12x53 with Pile Shoes
Nominal Required Bearing: 419 kips
Factored Resistance Available: 139.6 kips
Est. Length: 57 feet
No. Production Piles: 6
No. Test Piles: 1

REVISIONS	
NAME	DATE

ILLINOIS DEPARTMENT OF TRANSPORTATION

PIER
IL. RTE. 173
OVER
PISCASAW CREEK OVERFLOW
F.A.P. RTE. 303 SECTION: 131B(1&2)BR
McHENRY COUNTY STATION 90+20.80
STRUCTURE NO. 056-0089

SCALE: DRAWN BY: D.L./F.M.
DATE: APRIL 13, 2007 CHECKED BY: B.N.S./J.C.N.

CHRISTIAN-ROGE & ASSOC., INC.
CHICAGO ILLINOIS