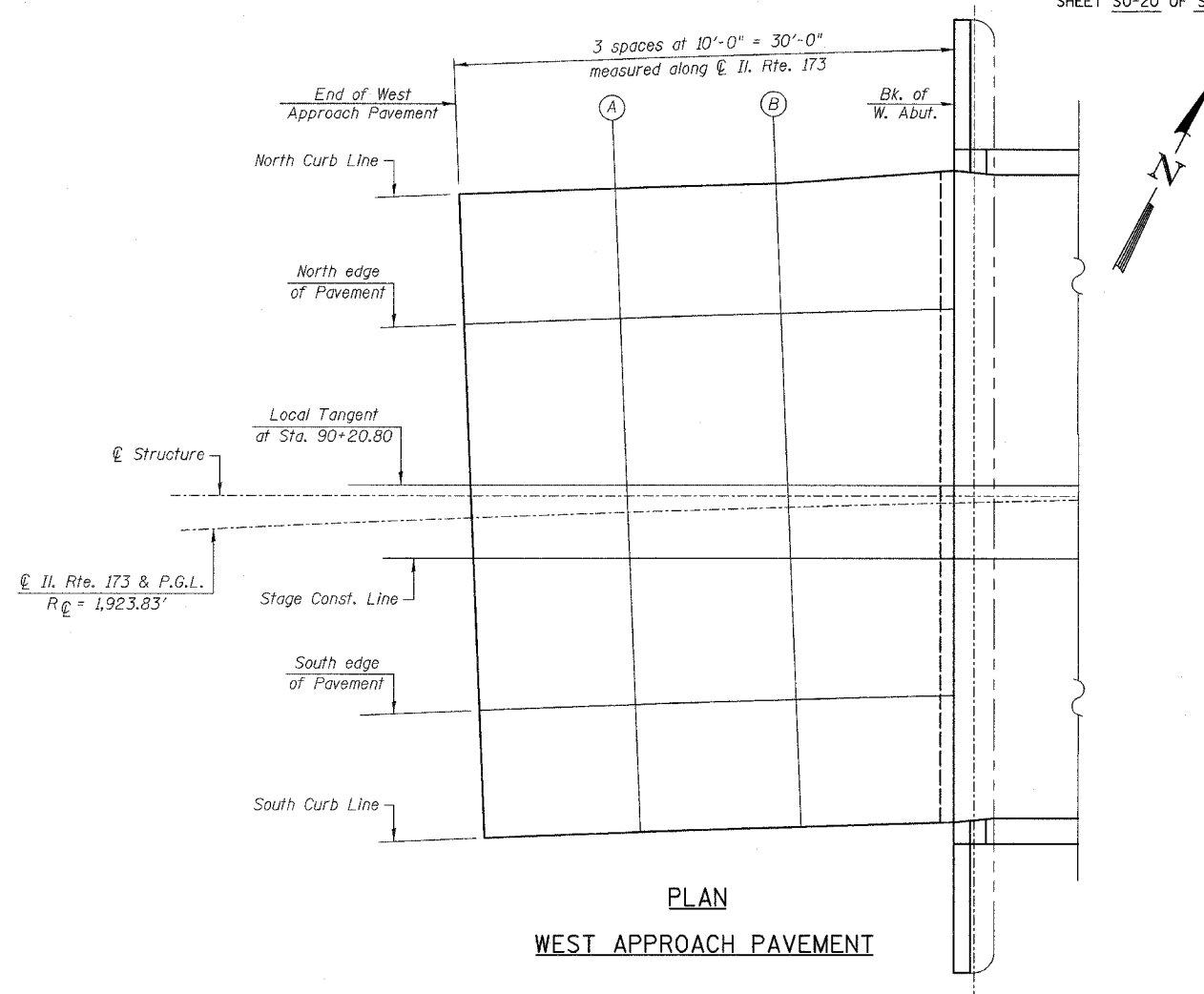


F.A.P. NO.	SECTION	COUNTY	TOTAL SHEETS	SHEET NO.
303	131B(1&2)BR	McHENRY	107	61
STA.		TO STA.		
FED. ROAD DIST. NO.	ILLINOIS	FED. AID PROJECT		

CONTRACT NO. 60B83



PLAN
WEST APPROACH PAVEMENT

NORTH CURB LINE

LOCATION	STATION	OFFSET	THEORETICAL GRADE ELEVATIONS	THEORETICAL GRADE ELEVATIONS ADJUSTED FOR DEAD LOAD DEFLECTIONS
END W. APPR. PAV'T	89+44.55	-20.00	875.67	875.67
A	89+54.55	-20.00	875.72	875.72
B	89+64.55	-20.00	875.77	875.77
BACK OF WEST ABUT.	89+74.55	-20.70	875.85	875.85

NORTH EDGE OF PAVEMENT

LOCATION	STATION	OFFSET	THEORETICAL GRADE ELEVATIONS	THEORETICAL GRADE ELEVATIONS ADJUSTED FOR DEAD LOAD DEFLECTIONS
END W. APPR. PAV'T	89+44.55	-12.00	875.40	875.40
A	89+54.55	-12.00	875.45	875.45
B	89+64.55	-12.00	875.50	875.50
BACK OF WEST ABUT.	89+74.55	-12.00	875.55	875.55

CL ROADWAY & P.G.L.

LOCATION	STATION	OFFSET	THEORETICAL GRADE ELEVATIONS	THEORETICAL GRADE ELEVATIONS ADJUSTED FOR DEAD LOAD DEFLECTIONS
END W. APPR. PAV'T	89+44.55	0.00	874.98	874.98
A	89+54.55	0.00	875.03	875.03
B	89+64.55	0.00	875.08	875.08
BACK OF WEST ABUT.	89+74.55	0.00	875.13	875.13

STAGE CONSTRUCTION LINE

LOCATION	STATION	OFFSET	THEORETICAL GRADE ELEVATIONS	THEORETICAL GRADE ELEVATIONS ADJUSTED FOR DEAD LOAD DEFLECTIONS
END W. APPR. PAV'T	89+44.55	2.64	874.89	874.89
A	89+54.55	3.01	874.93	874.93
B	89+64.55	3.33	874.97	874.97
BACK OF WEST ABUT.	89+74.55	3.59	875.01	875.01

SOUTH EDGE OF PAVEMENT

LOCATION	STATION	OFFSET	THEORETICAL GRADE ELEVATIONS	THEORETICAL GRADE ELEVATIONS ADJUSTED FOR DEAD LOAD DEFLECTIONS
END W. APPR. PAV'T	89+44.55	12.00	874.57	874.57
A	89+54.55	12.00	874.62	874.62
B	89+64.55	12.00	874.67	874.67
BACK OF WEST ABUT.	89+74.55	12.00	874.72	874.72

SOUTH CURB LINE

LOCATION	STATION	OFFSET	THEORETICAL GRADE ELEVATIONS	THEORETICAL GRADE ELEVATIONS ADJUSTED FOR DEAD LOAD DEFLECTIONS
END W. APPR. PAV'T	89+44.55	20.00	874.29	874.29
A	89+54.55	20.00	874.34	874.34
B	89+64.55	20.00	874.39	874.39
BACK OF WEST ABUT.	89+74.55	20.14	874.44	874.44

REVISIONS	
NAME	DATE

ILLINOIS DEPARTMENT OF TRANSPORTATION

WEST APPROACH PAVEMENT-ELEVATIONS

IL. RTE. 173 OVER
PISCASAW CREEK OVERFLOW
F.A.P. RTE. 303 SECTION: 131B(1&2)BR
McHENRY COUNTY STATION 90+20.80
STRUCTURE NO. 056-0089

SCALE: DATE: APRIL 13, 2007

DRAWN BY: D.L./F.M.
CHECKED BY: B.N.S./J.C.N.

CHRISTIAN-ROGE & ASSOC., INC.
CHICAGO ILLINOIS