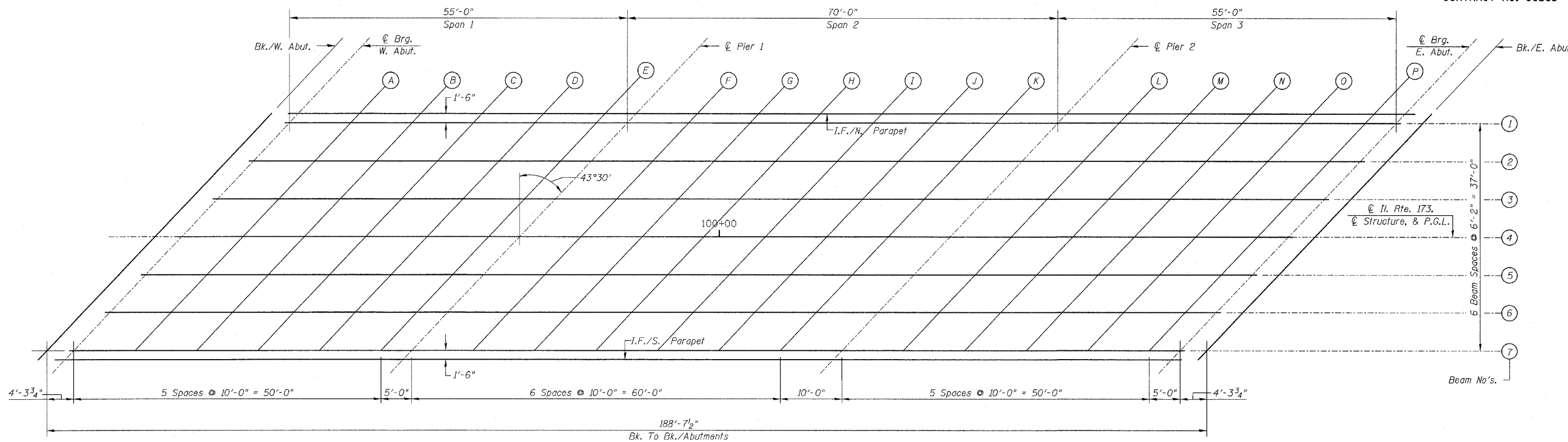
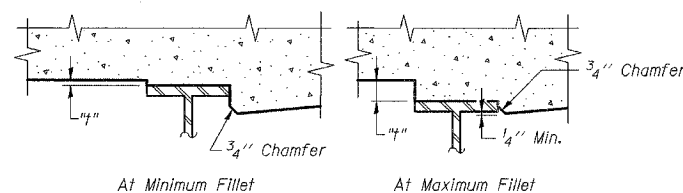


F.A.P. NO.	SECTION	COUNTY	TOTAL SHEETS	SHEET NO.
303	131B(1&2)BR	McHENRY	107	68
STA.	TO STA.			
FED. ROAD DIST. NO.	ILLINOIS	FED. AID PROJECT		

CONTRACT NO. 60B83

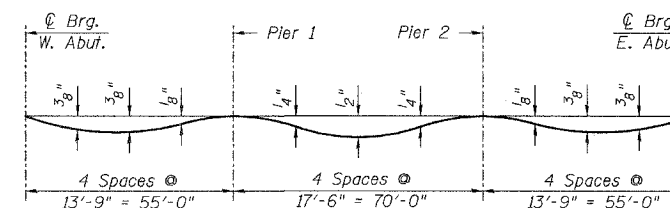


PLAN



To determine "t": after all structural steel has been erected, elevations of the top flanges of the beams shall be taken at intervals shown below. These elevations subtracted from the "theoretical grade elevations adjusted for the dead load deflection" shown on this sheet, minus slab thickness, equals the fillet heights "t" above top flange of beams.

FILLET HEIGHTS



DEAD LOAD DEFLECTION DIAGRAM
(INCLUDES WEIGHT OF CONCRETE ONLY)

Note:
The above deflections are not to be used in the field if the engineer is working from the grade elevations adjusted for dead load deflections as shown on Sht. S05 & S06

REVISIONS	
NAME	DATE

ILLINOIS DEPARTMENT OF TRANSPORTATION
DECK ELEVATIONS-I
IL. RTE. 173
OVER
PISCASAW CREEK
F.A.P. RTE. 303 SECTION: 131B(1&2)BR
McHENRY COUNTY STATION 100+00.00
STRUCTURE NO. 056-0090
SCALE: DRAWN BY: D.L./F.M.
DATE: APRIL 2, 2007 CHECKED BY: B.N.S./J.C.N.
CHRISTIAN-ROGE & ASSOC., INC.
CHICAGO ILLINOIS

DATE PLOTTED: 4/17/2007 2:52:15 PM