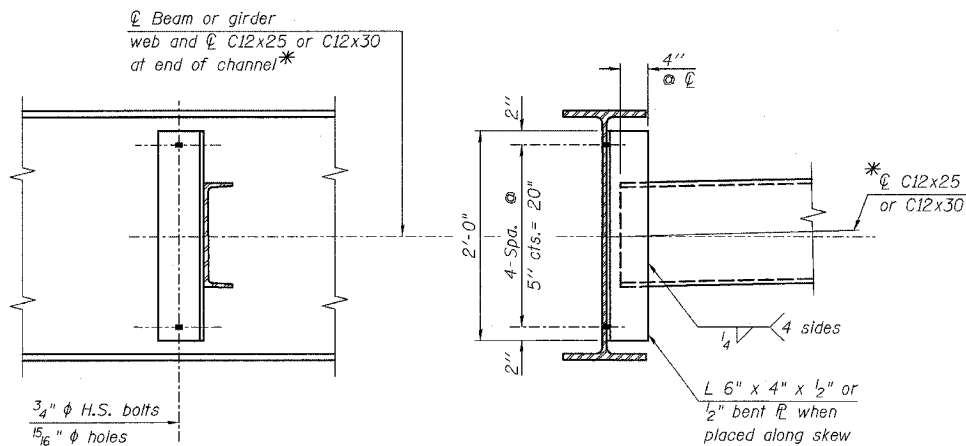


F.A.P. NO.	SECTION	COUNTY	TOTAL SHEETS	SHEET NO.
303	131B(1&2)BR	McHENRY	107	76
STA.	TO STA.			
FED. ROAD DIST. NO.	ILLINOIS	FED. AID PROJECT		

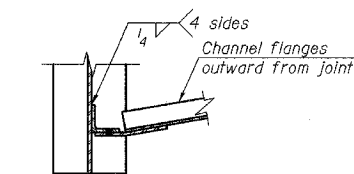
CONTRACT NO. 60B83



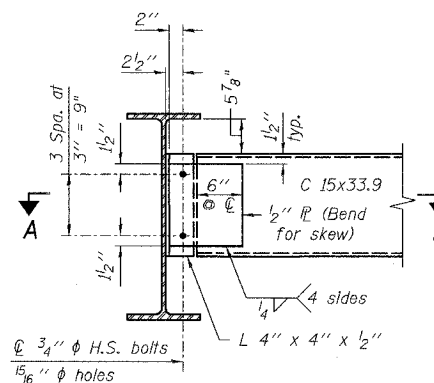
**INTERIOR DIAPHRAGM D**  
(48 Required)

Note:  
Two hardened washers required for each set of oversized holes.

\* Alternate channels are permitted to facilitate material acquisition. Calculated weight of structural steel is based on the lighter section.



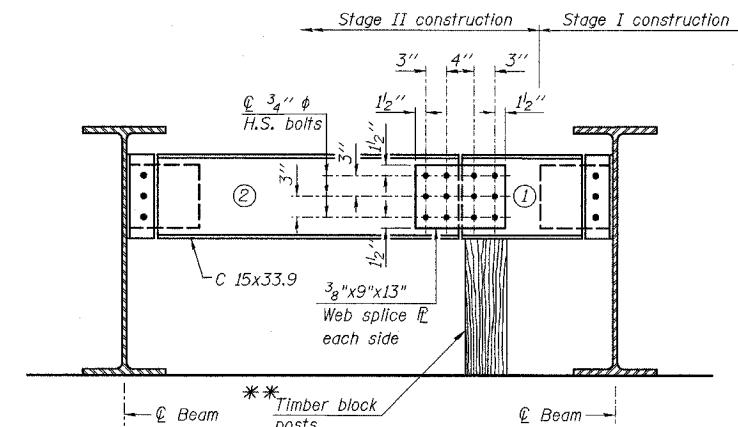
**SECTION A-A**



**END DIAPHRAGM D1**  
(10 Required)

Note:  
Two hardened washers required for each set of oversized holes.

\*\* Cost of Timber Block Posts is included with Structural Steel.



**END DIAPHRAGM D1**  
(2 Required)

**END DIAPHRAGM STAGE CONSTRUCTION SEQUENCE**

- 1.) Order Diaphragm in two sections.
- 2.) Attach section ① of Diaphragm to Beam
- 3.) Place Timber Block Posts between section ① of diaphragm and abutment bearing section.
- 4.) Attach section ② of diaphragm to both Beam and section ① of diaphragm during Stage II Construction with splice plates.
- 5.) Remove Timber Block Posts.

**\*\*\* TOP OF BEAM ELEVATIONS**

Beam	℄ Brg. W. Abut.	℄ Pier #1	℄ Splice #1	℄ Splice #2	℄ Pier #2	℄ Brg. E. Abut.
1	874.87	875.09	875.14	875.38	875.44	875.77
2	874.97	875.19	875.24	875.48	875.54	875.87
3	875.04	875.26	875.31	875.55	875.61	875.94
4	875.10	875.33	875.38	875.61	875.68	876.00
5	874.98	875.20	875.25	875.49	875.55	875.88
6	874.85	875.08	875.12	875.36	875.43	875.75
7	874.69	874.92	874.97	875.20	875.27	875.59

\*\*\* For fabrication only

REVISIONS	
NAME	DATE

ILLINOIS DEPARTMENT OF TRANSPORTATION  
 STRUCTURAL STEEL DETAILS  
 IL. RTE. 173  
 OVER  
 PISCASAW CREEK  
 F.A.P. RTE. 303 SECTION: 131B(1&2)BR  
 McHENRY COUNTY STATION 100+00.00  
 STRUCTURE NO. 056-0090

SCALE: DATE: APRIL 2, 2007  
 DRAWN BY: D.L./F.M.  
 CHECKED BY: B.N.S./J.C.N.

**CHRISTIAN-ROGE & ASSOC., INC.**  
 CHICAGO ILLINOIS