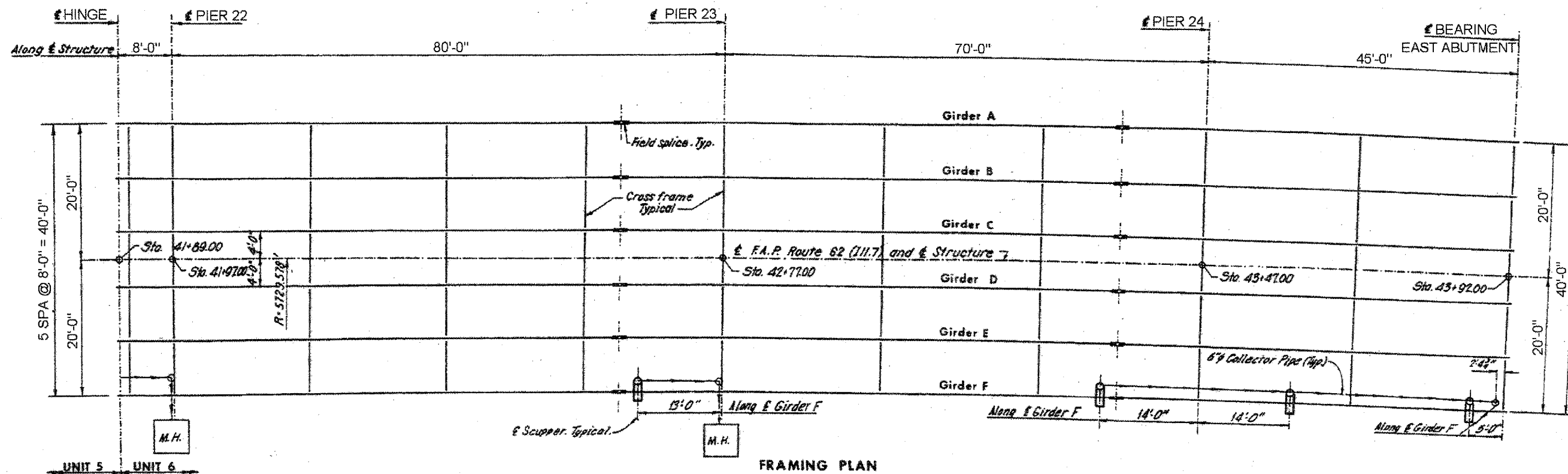


ROUTE	SECTION	COUNTY	TOTAL SHEETS	SHEET NUMBER
FAP 351 & FAU 2831	2006-037BP	COOK & WILL	27	22



SEE SHEET 23 FOR BEAM SIZES

SHEET 1 OF 2

ILLINOIS DEPARTMENT OF TRANSPORTATION
FRAMING PLAN LOCATION 1
SN: 099-0185 – UNIT 6
IL-7 OVER DES PLAINES RIVER,
S&S CANAL & BNSF RR