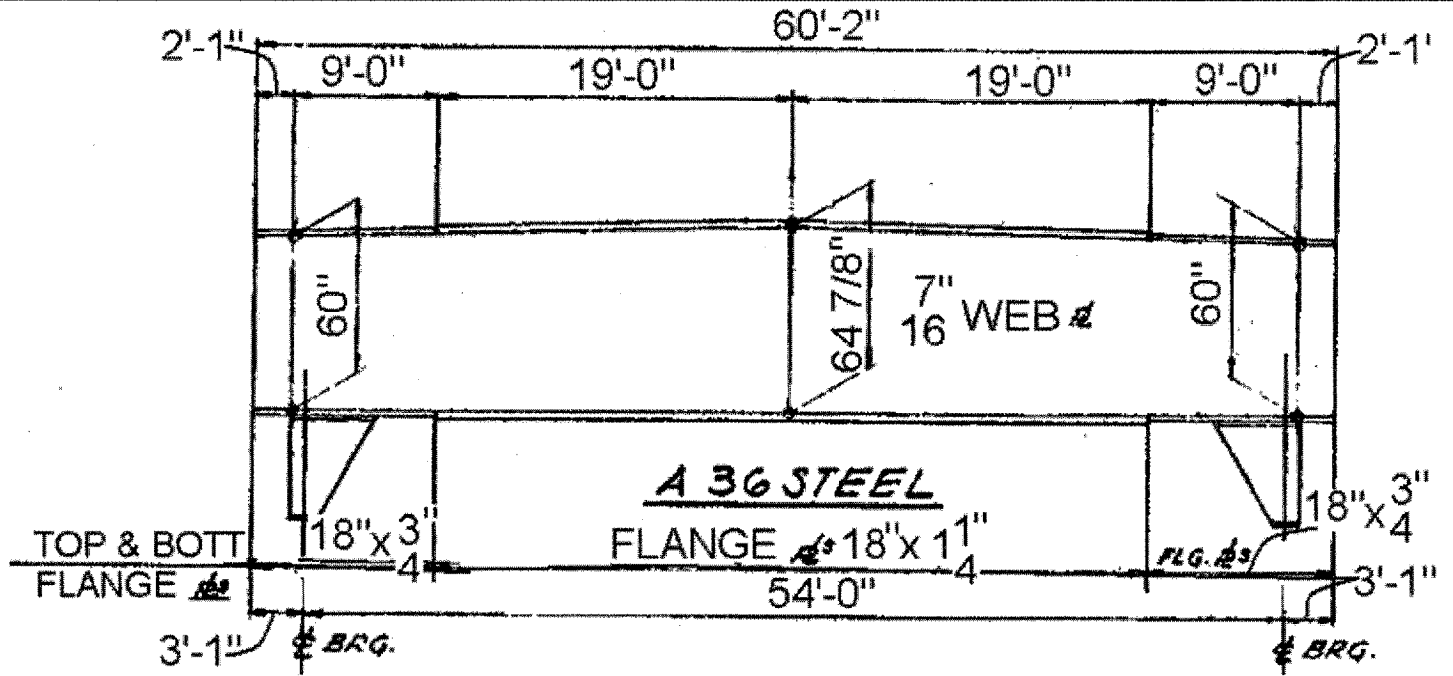
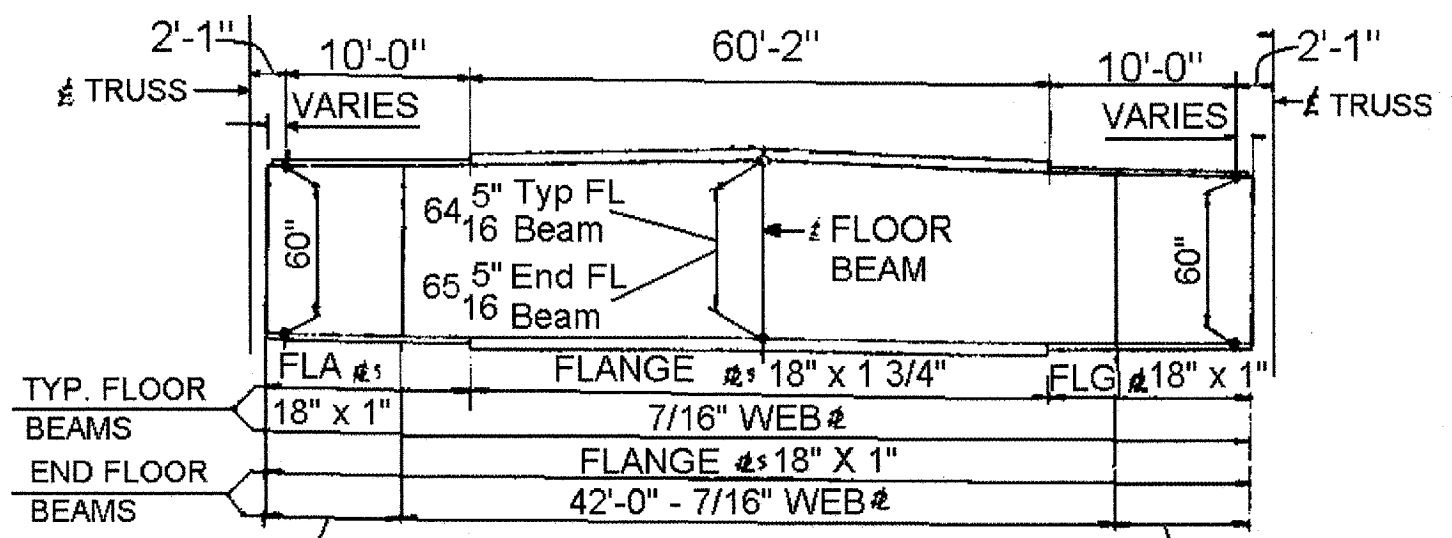


ROUTE	SECTION	COUNTY	TOTAL SHEETS	SHEET NUMBER
FAP 351 & FAU 2831	2006-037BP	COOK & WILL	27	25

MEMBER	SECTION	LENGTH C. TO C. JOINT FEET
L <sub>0</sub> - U <sub>1</sub>	2 #5 24 x 5/8 2 #5 20 3/4 x 3/8 4 LS 8 x 6 x 1/2	44.986
U <sub>1</sub> - U <sub>3</sub>	2 #5 24 x 5/8 2 #5 20 3/4 x 3/8 4 LS 8 x 6 x 1/2	32.225
U <sub>3</sub> - U <sub>3</sub> '	2 #5 24 x 5/8 2 #5 20 3/4 x 3/8 4 LS 8 x 6 x 1/2	31.750
U <sub>3</sub> ' - U <sub>1</sub> '	2 #5 24 x 5/8 2 #5 20 3/4 x 3/8 4 LS 8 x 6 x 1/2	32.211
U <sub>1</sub> ' - L <sub>0</sub> '	2 #5 24 x 5/8 2 #5 20 3/4 x 3/8 4 LS 8 x 6 x 1/2	44.931
L <sub>0</sub> - L <sub>2</sub>	2 #5 24 x 3/4 1 # 20 1/2 x 5/8	31.752
L <sub>2</sub> - L <sub>4</sub>	2 #5 24 x 1 1/8 1 # 19 3/4 x 1	31.751
L <sub>4</sub> - L <sub>2</sub>	2 #5 24 x 1 1/8 1 # 19 3/4 x 1	31.750
L <sub>2</sub> ' - L <sub>0</sub>	2 #5 24 x 3/4 1 # 20 1/2 x 5/8	31.751
U <sub>1</sub> - L <sub>2</sub>	2 #5 16 x 3/4 1 # 20 1/2 x 1/2	44.465
L <sub>2</sub> - U <sub>3</sub>	2 C15 x 33.9 2 #5 21 x 3/8	52.770
U <sub>3</sub> - L <sub>4</sub>	2 #5 16 x 9/16 1 # 20 7/8 x 3/8	52.531
L <sub>4</sub> - U <sub>3</sub> '	2 #5 16 x 9/16 1 # 20 7/8 x 3/8	52.594
U <sub>3</sub> ' - L <sub>2</sub> '	2 C15 x 33.9 2 #5 21 x 3/8	52.707
L <sub>2</sub> - U <sub>1</sub> '	2 #5 16 x 3/4 1 # 20 1/2 x 1/2	44.520
U <sub>1</sub> -L <sub>1</sub> , U <sub>1</sub> '-L <sub>1</sub> '	2 #5 12 x 5/8 1 # 20 3/4 x 3/8	31.500
U <sub>2</sub> -L <sub>2</sub> , U <sub>2</sub> '-L <sub>2</sub> '	2 #5 12 x 1/2 1 # 21 x 1/2	36.640
U <sub>3</sub> -L <sub>3</sub> , U <sub>3</sub> '-L <sub>3</sub> '	2 #5 12 x 5/8 1 # 20 3/4 x 3/8	42.000
U <sub>4</sub> - L <sub>4</sub>	2 #5 12 x 1/2 1 # 21 x 1/2	41.390



ELEVATION FLOOR BEAM F2  
NO SCALE



FLOOR BEAM ELEVATION  
NO SCALE

ILLINOIS DEPARTMENT OF TRANSPORTATION  
STEEL DETAILS LOCATION 2  
SN: 016-0762  
KEDZIE AVE OVER THE  
CAL-SAG CHANNEL