

ROUTE	SECTION	COUNTY	TOTAL SHEETS	SHEET NUMBER
FAP 351 & FAU 2831	2006-037BP	COOK & WILL	27	1

STATE OF ILLINOIS
DEPARTMENT OF TRANSPORTATION
DIVISION OF HIGHWAYS
PROPOSED
HIGHWAY PLANS

FOR INDEX OF SHEETS, SEE SHEET NO. 2

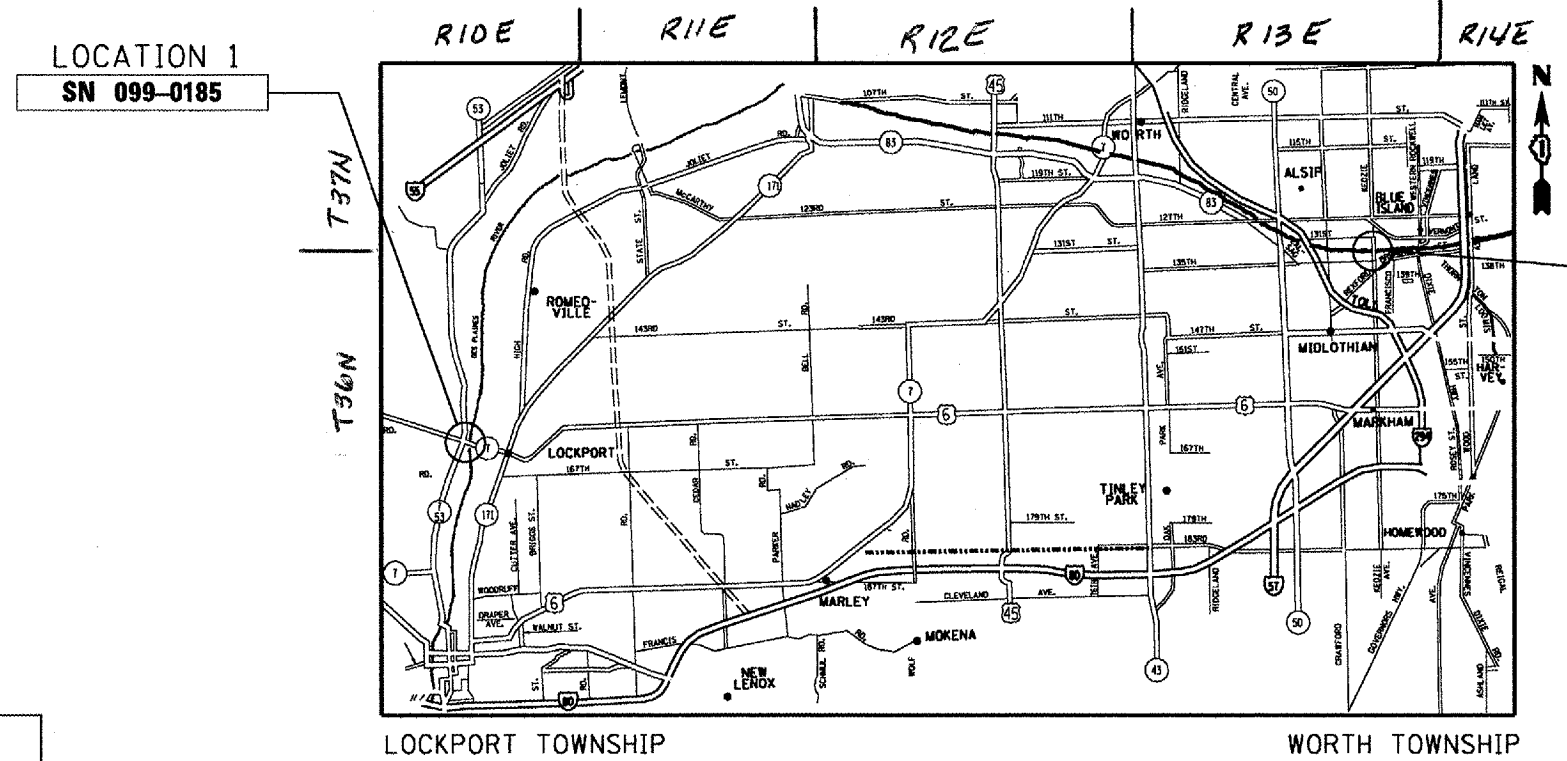
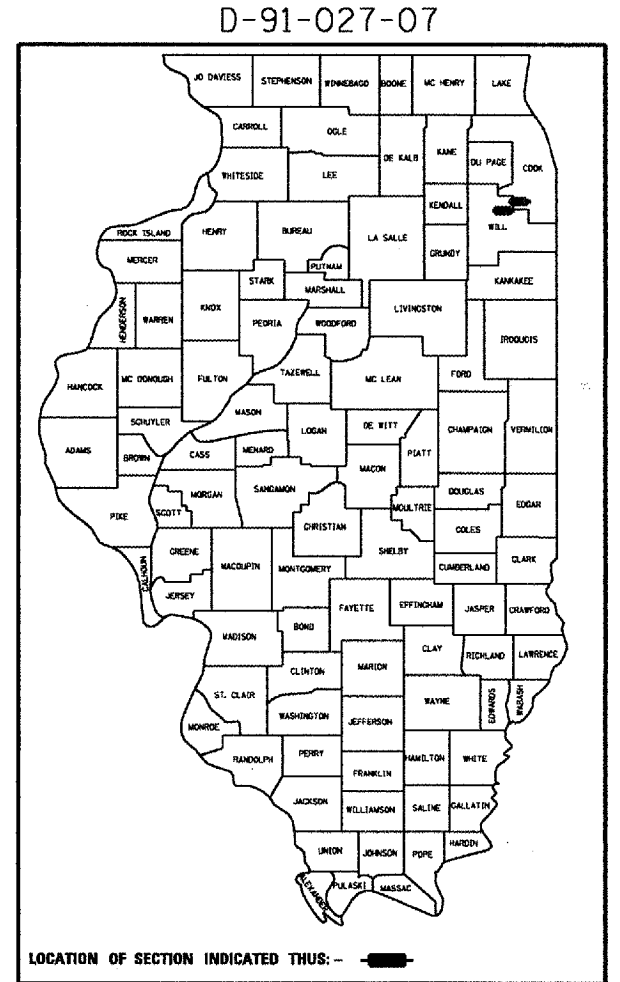
IMPROVEMENTS LOCATED IN THE VILLAGES OF LOCKPORT AND ROBBINS

TRAFFIC DATA:

LOCATION 1 IL 7:
 2002 ADT = 15800
 SPEED LIMIT = 30 MPH

LOCATION 2 KEDZIE AVE:
 2005 ADT = 22500
 SPEED LIMIT = 35 MPH

LOC. 1: FAP ROUTE 351: IL 7 OVER
DES PLAINES RIVER, S&S CANAL & BNSF RR. (SN 099-0185)
LOC 2: FAU ROUTE 2831: KEDZIE AVE. OVER
CAL SAG CHANNEL (SN 016-0762)
SECTION 2006-037 BP
BRIDGE PAINTING
COOK & WILL COUNTIES
C-91-027-07



STATE OF ILLINOIS
 DEPARTMENT OF TRANSPORTATION
 DIVISION OF HIGHWAYS
 SUBMITTED 3/29 20 07
Prave D'Keefe
 DEPUTY DIRECTOR OF HIGHWAYS, REGION ENGINEER
 May 11, 20 07
Eric E. Harp
 ENGINEER OF DESIGN AND ENVIRONMENT
 May 11, 20 07
Millon R. Sees, P.E.
 DIRECTOR OF HIGHWAYS, CHIEF ENGINEER

PRINTED BY THE AUTHORITY OF THE STATE OF ILLINOIS

J.U.L.I.E.
 JOINT UTILITY LOCATION INFORMATION FOR EXCAVATION
 1-800-892-0123

DISTRICT ONE BUREAU OF DESIGN
 PLANPREP ENGINEER: KEN ENG/R. BORO (847)705-4178

ROUTE	SECTION	COUNTY	TOTAL SHEETS	SHEET NUMBER
FAP 351 & FAU 2831	2006-037BP	COOK & WILL	27	2

INDEX OF SHEETS

- 1 TITLE SHEET
- 2 INDEX OF SHEETS STATE STANDARDS AND GENERAL NOTES
- 3 GENERAL PAINT NOTES
- 4 SUMMARY OF QUANTITIES
- 5 - 23 EXISTING BRIDGE PLANS (SN 099-~~0185~~: LOCATION 1)
- 24 - 25 EXISTING BRIDGE PLANS (SN 016-0762: LOCATION 2)
- 26 TRAFFIC CONTROL AND PROTECTION FOR SIDE ROADS, INTERSECTIONS AND DRIVEWAYS
- 27 TRAFFIC CONTROL FOR SHOULDER AND PARTIAL RAMP CLOSURES

STATE STANDARDS

- 701301-02 LANE CLOSURE, 2L, 2W, SHORT TIME OPERATIONS
- 701601-04 URBAN LANE CLOSURE, MULTILANE, 1W OR 2W WITH NONTRAVERSABLE MEDIAN
- 701606-04 URBAN LANE CLOSURE, MULTILANE 2W WITH MOUNTABLE MEDIAN
- 702001-06 TRAFFIC CONTROL DEVICES

GENERAL NOTES

IT SHALL BE THE CONTRACTOR'S RESPONSIBILITY TO VERIFY ALL DIMENSIONS & CONDITIONS EXISTING IN THE FIELD PRIOR TO CONSTRUCTION & ORDERING OF MATERIALS.

THE CONTRACTOR WILL NOT BE ALLOWED TO SET UP A YARD OR FIELD OFFICE ON STATE PROPERTY WITHOUT WRITTEN PERMISSION FROM THE DEPARTMENT.

THE CONTRACTOR SHALL CONTACT THE DISTRICT ONE TRAFFIC CONTROL SUPERVISOR AT (847) 705-4470 A MINIMUM OF 72 HOURS IN ADVANCE OF BEGINNING WORK.

WHEN ARTIFICIAL LIGHTING IS UTILIZED IN NIGHT OPERATIONS, THE CONTRACTOR SHALL EXERCISE THE UTMOST PRECAUTIONS IN PREVENTING ADVERSE VISIBILITY TO THE MOTORING PUBLIC AND ADJOINING RESIDENTIAL AREA.

IT SHALL BE THE CONTRACTOR'S RESPONSIBILITY TO PROTECT AND MAINTAIN THE EXISTING BRIDGE LIGHTING AT ALL LOCATIONS

THE CONTRACTOR SHALL BE REQUIRED TO PROVIDE ACCESS TO ABUTTING PROPERTY AT ALL TIMES DURING THE CONSTRUCTION OF THIS PROJECT.

DO NOT SCALE PLANS FOR CONSTRUCTION DIMENSIONS.

THE CONTRACTOR SHALL OBTAIN COAST GUARD APPROVAL TO OCCUPY NAVIGABLE WATERS, IF REQUIRED, FOR THE PROPOSED WORK. A WORK PLAN SHALL BE PREPARED BY THE CONTRACTOR, REVIEWED AND APPROVED BY THE ENGINEER AND BE SUBMITTED BY THE ENGINEER TO THE COAST GUARD AT THE ADDRESS LISTED BELOW FOR APPROVAL

BRIDGE ADMINISTRATOR
 US COAST GUARD
 NINTH COAST GUARD DISTRICT
 1240 E. NINTH ST
 CLEVELAND, OH 44199-2060

ILLINOIS DEPARTMENT OF TRANSPORTATION

**INDEX OF SHEETS
 STATE STANDARDS
 GENERAL NOTES**

Rev.

ROUTE	SECTION	COUNTY	TOTAL SHEETS	SHEET NUMBER
FAP 351 & FAU 2831	2006-037BP	COOK & WILL	27	3

Contract 60B94

GENERAL NOTES FOR PAINT

CLEANING AND PAINTING OF THE EXISTING STRUCTURAL STEEL SHALL BE AS SPECIFIED IN THE SPECIAL PROVISION FOR "CLEANING AND PAINTING EXISTING STEEL STRUCTURES".

A MINIMUM OF FOUR (4) [AT EACH LOCATION] AIR MONITORS WILL BE REQUIRED TO MONITOR ABRASIVE BLASTING OPERATIONS PER LOCATION, SEE SPECIAL PROVISIONS FOR CONTAINMENT AND DISPOSAL OF LEAD PAINT CLEANING RESIDUE.

THE SSPC-QP1 AND SSPC-QP2 PAINTING CONTRACTOR CERTIFICATIONS WILL BE REQUIRED FOR THESE BRIDGES.

THE AREAS DESIGNATED TO BE CLEANED PER NEAR WHITE BLAST CLEANING SSPC-SP10 SHALL BE PAINTED ACCORDING TO THE REQUIREMENTS OF PAINT SYSTEM 1 - OZ/E/U. THE COLOR OF THE FINAL FINISH COAT FOR ALL INTERIOR STEEL SURFACES AT LOCATION 1) AND ALL SURFACES AT LOCATION 2) SHALL BE GRAY, MUNSELL NO 5B 7/1. THE COLOR OF THE FINAL FINISH COAT FOR THE EXTERIOR AND BOTTOM FLANGE OF THE FASCIA BEAMS AT LOCATION 1) SHALL BE WARM GRAY, MUNSELL NO 2.5Y 5/1.

ALL ITEMS (SUCH AS, BUT NOT LIMITED TO; CONDUITS, BRACKETS AND DECK DRAINS) ATTACHED TO THE OUTSIDE OF THE FASCIA BEAMS SHOULD BE CLEANED AND PAINTED.

LOCATION 1 (SN 099-0185): ALL BEAMS, BEARINGS AND OTHER STRUCTURAL STEEL WITHIN (SEE TABLE)* (MEASURED ALONG THE BEAM) OF EITHER SIDE OF THE DECK JOINTS SHALL BE CLEANED PER NEAR WHITE BLAST CLEANING SSPC-SP10. THE ENTIRE FASCIA BEAMS SHALL BE CLEANED PER NEAR WHITE BLAST CLEANING-MODIFIED SSPC-SP10.

LOCATION 2 (SN 016-0762): THE ENTIRE FLOOR BEAMS UNDER DECK JOINTS SHALL BE CLEANED PER NEAR WHITE BLAST CLEANING-MODIFIED SSPC-SP10. ALL LOWER CHORDS AND ALL STRUCTURAL STEEL MEMBERS OF THE TRUSS WITHIN 12 FT ABOVE LOWER CHORDS, INCLUDING ALL FLOOR BEAM CONNECTING HORIZONTAL GUSSET PLATES, SHALL BE CLEANED PER NEAR WHITE BLAST CLEANING SSPC-SP10.

JOINT LOCATION	DIST.	JOINT LOCATION	DIST.
<u>UNIT 1</u>		<u>UNIT 4</u>	
WEST ABUTMENT	10'	HINGE EAST OF PIER 11	10'
HINGE WEST OF PIER 6	10'	HINGE EAST OF PIER 19	15'
<u>UNIT 2</u>		<u>UNIT 5</u>	
HINGE WEST OF PIER 6	15'	HINGE EAST OF PIER 19	22'
HINGE WEST OF PIER 11	10'	HINGE WEST OF PIER 22	10'
<u>UNIT 3</u>		<u>UNIT 6</u>	
HINGE WEST OF PIER 11	10'	HINGE WEST OF PIER 22	10'
HINGE WEST OF PIER 14	10'	EAST ABUTMENT	10'

ILLINOIS DEPARTMENT OF TRANSPORTATION

GENERAL PAINT NOTES

ROUTE	SECTION	COUNTY	TOTAL SHEETS	SHEET NUMBER
FAP 351 & FAU 2831	2006-037BP	COOK & WILL	27	4

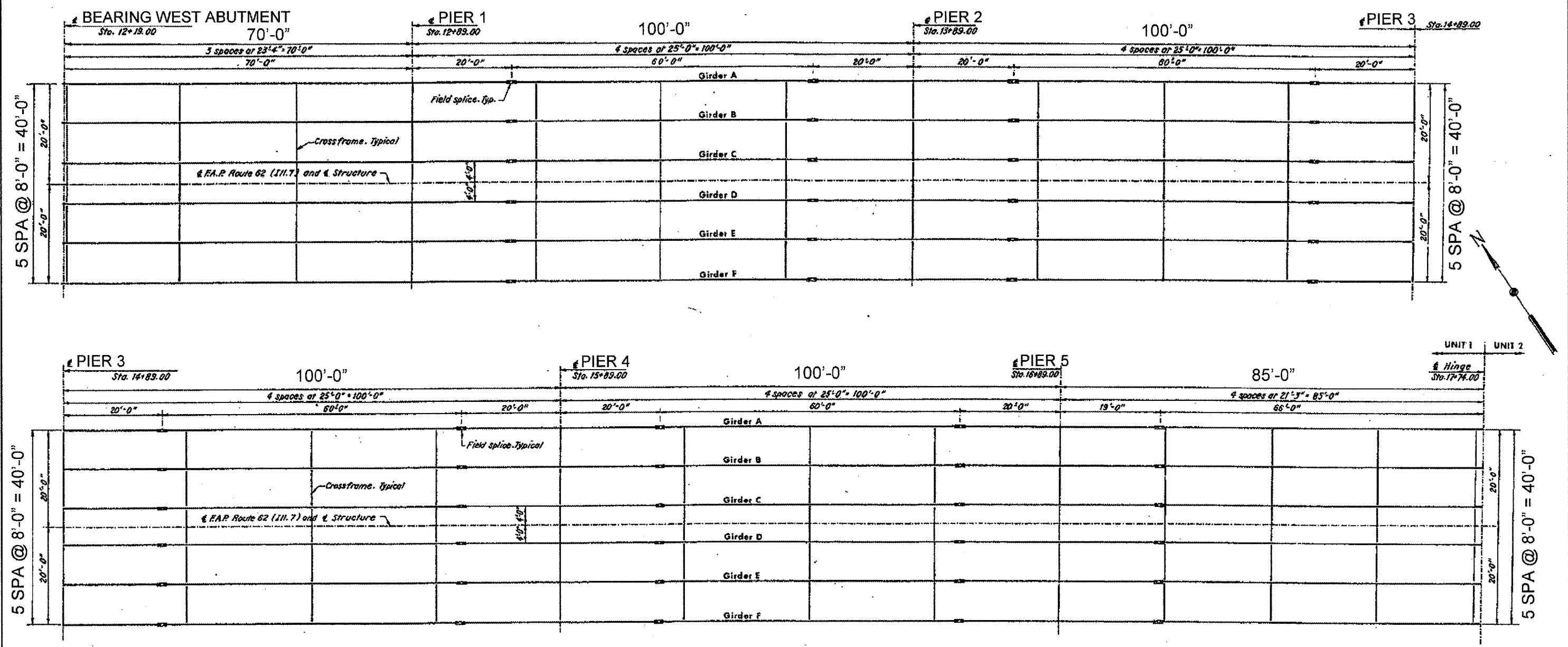
CONTRACT: 60B94

SUMMARY OF QUANTITIES					
Code No.	Description	Unit	Total Quantities	100% STATE	
				CONSTRUCTION TYPE CODE: SFTY - 2A	
				WILL COUNTY LOCATION 1 SN: 099-0185	COOK COUNTY LOCATION 2 SN: 016-0762
50606701	CLEANING AND PAINTING STRUCTURAL STEEL, LOCATION 1	L SUM	1	1	
50606702	CLEANING AND PAINTING STRUCTURAL STEEL, LOCATION 2	L SUM	1		1
50606400	CONTAINMENT AND DISPOSAL OF LEAD PAINT CLEANING RESIDUES	L SUM	1	0.8	0.2
67000400	ENGINEER'S FIELD OFFICE, TYPE A	CAL MO	15	12	3
67100100	MOBILIZATION	L SUM	1	0.8	0.2
70102625	TRAFFIC CONTROL AND PROTECTION, STANDARD 701606	L SUM	1	1	
70102630	TRAFFIC CONTROL AND PROTECTION, STANDARD 701601	L SUM	1		1
X0322467	TEMPORARY INFORMATION SIGNING FOR LANE CLOSURE	SQ FT	96	48	48
Z0048665	RAILROAD PROTECTIVE LIABILITY INSURANCE	L SUM	1	1	

ILLINOIS DEPARTMENT OF TRANSPORTATION
SUMMARY OF QUANTITIES

Rev:

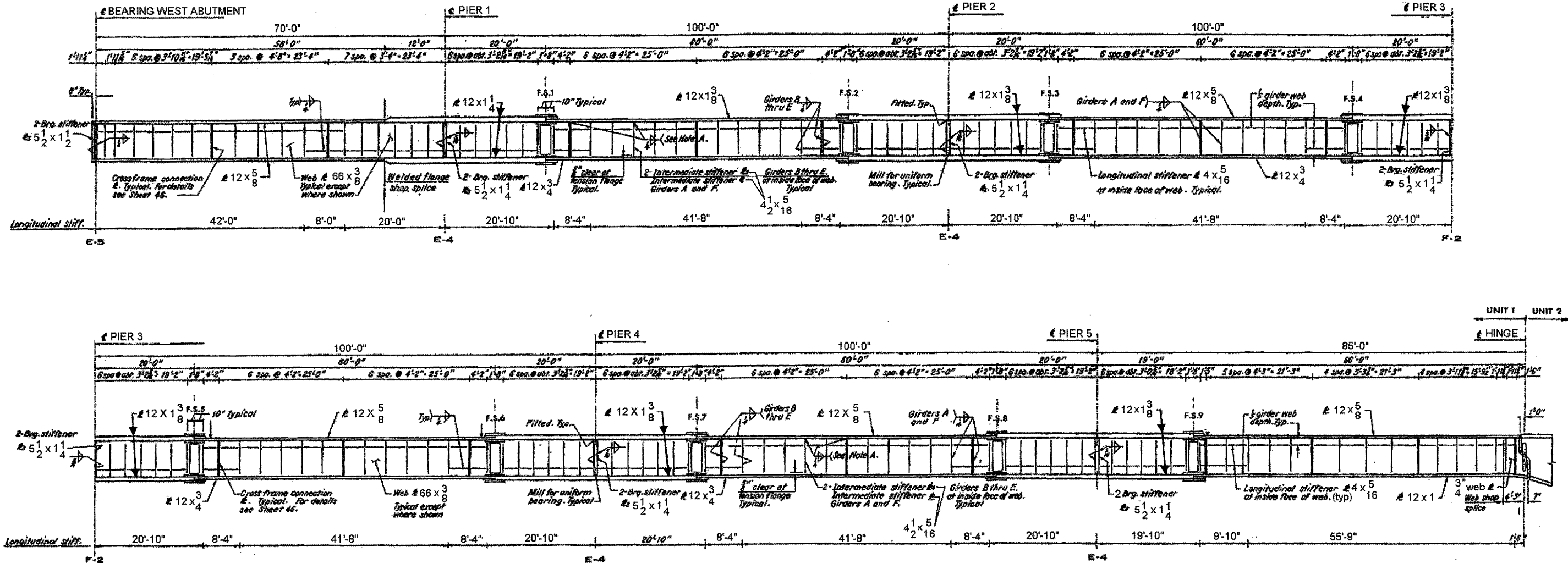
ROUTE	SECTION	COUNTY	TOTAL SHEETS	SHEET NUMBER
FAP 351 & FAU 2831	2006-037BP	COOK & WILL	27	5



FOR PLATE SIZES SEE SHEET 6
SHEET 1 OF 2

ILLINOIS DEPARTMENT OF TRANSPORTATION
FRAMING PLAN LOCATION 1
SN: 099-0185 – UNIT 1
IL-7 OVER DES PLAINES RIVER,
S&S CANAL & BNSF RR

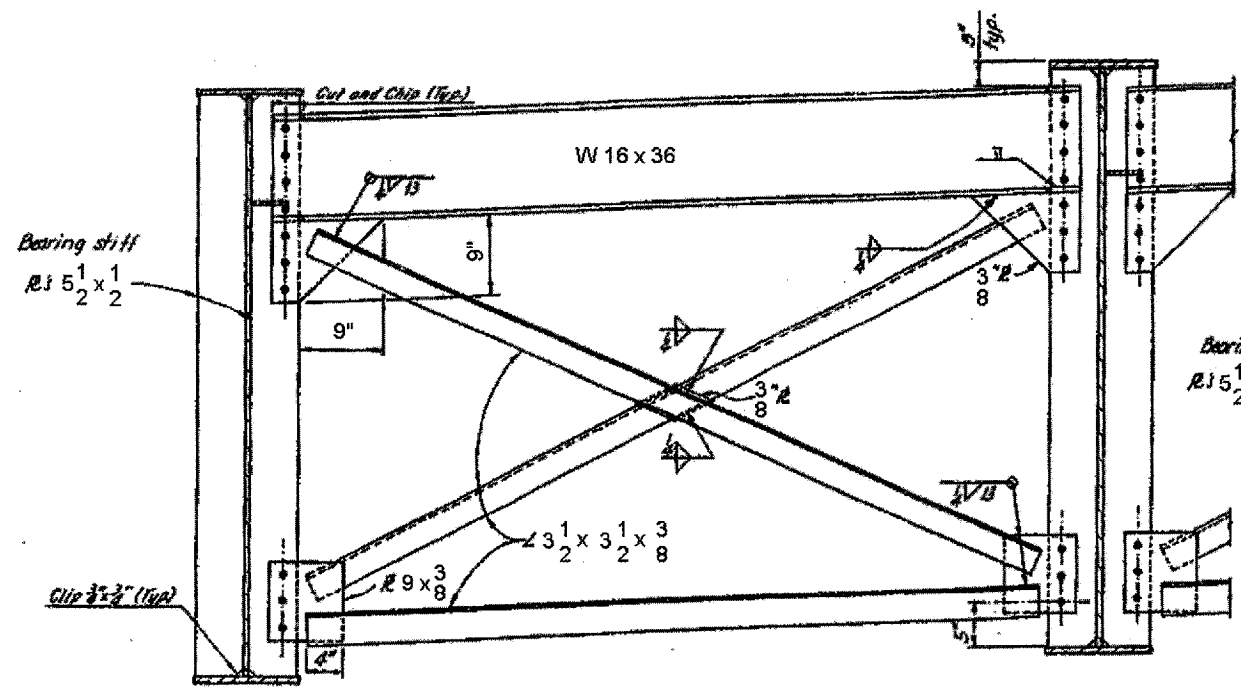
ROUTE	SECTION	COUNTY	TOTAL SHEETS	SHEET NUMBER
FAP 351 & FAU 2831	2006-037BP	COOK & WILL	27	6



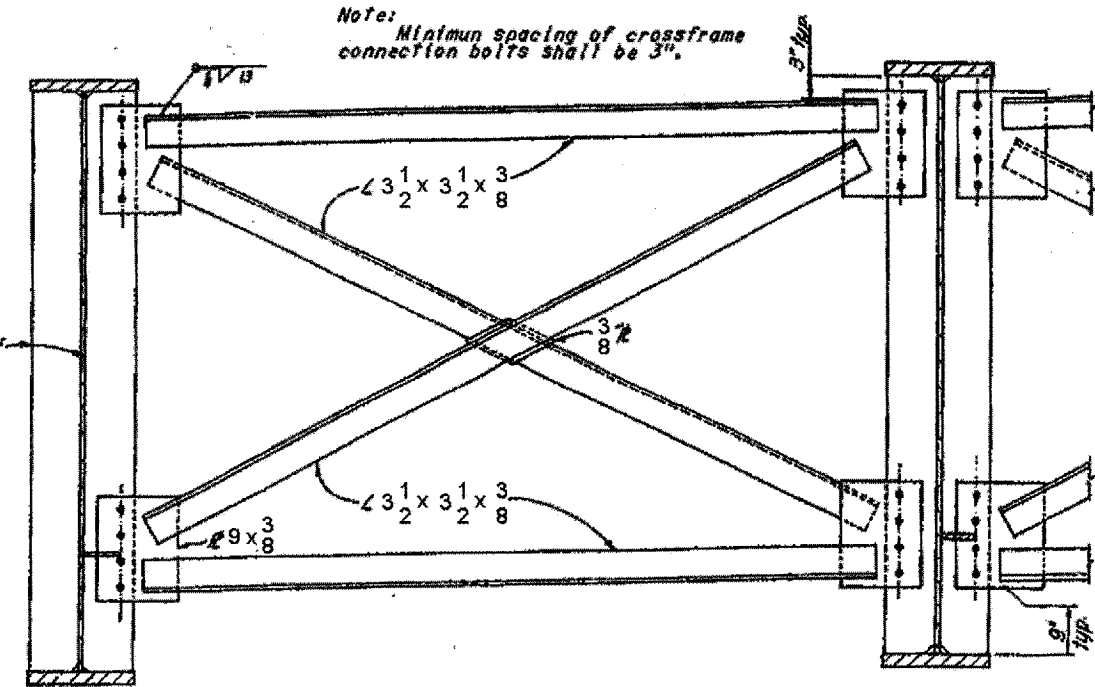
SHEET 2 OF 2

ILLINOIS DEPARTMENT OF TRANSPORTATION
 GIRDER ELEVATION LOCATION 1
 SN: 099-0185 – UNIT 1
 IL-7 OVER DES PLAINES RIVER,
 S&S CANAL & BNSF RR

ROUTE	SECTION	COUNTY	TOTAL SHEETS	SHEET NUMBER
FAP 351 & FAU 2831	2006-037BP	COOK & WILL	27	7

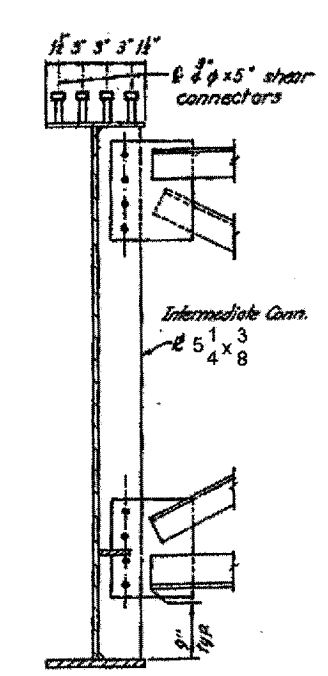


CROSSFRAME AT WEST ABUTMENT

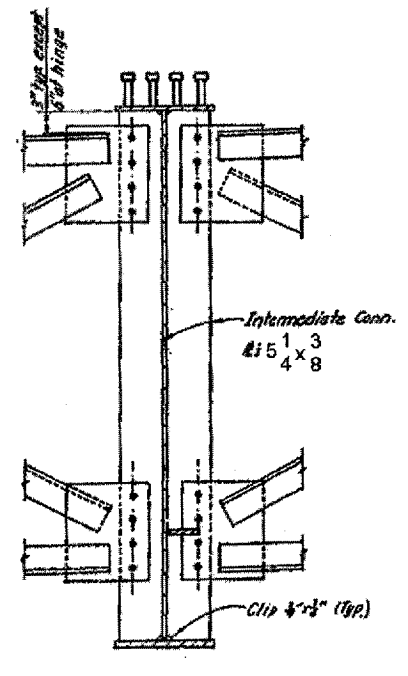


TYPICAL CROSSFRAME AT PIER

Note: Details not shown to be similar to those shown for Crossframe At West Abutment.



EXTERIOR GIRDER



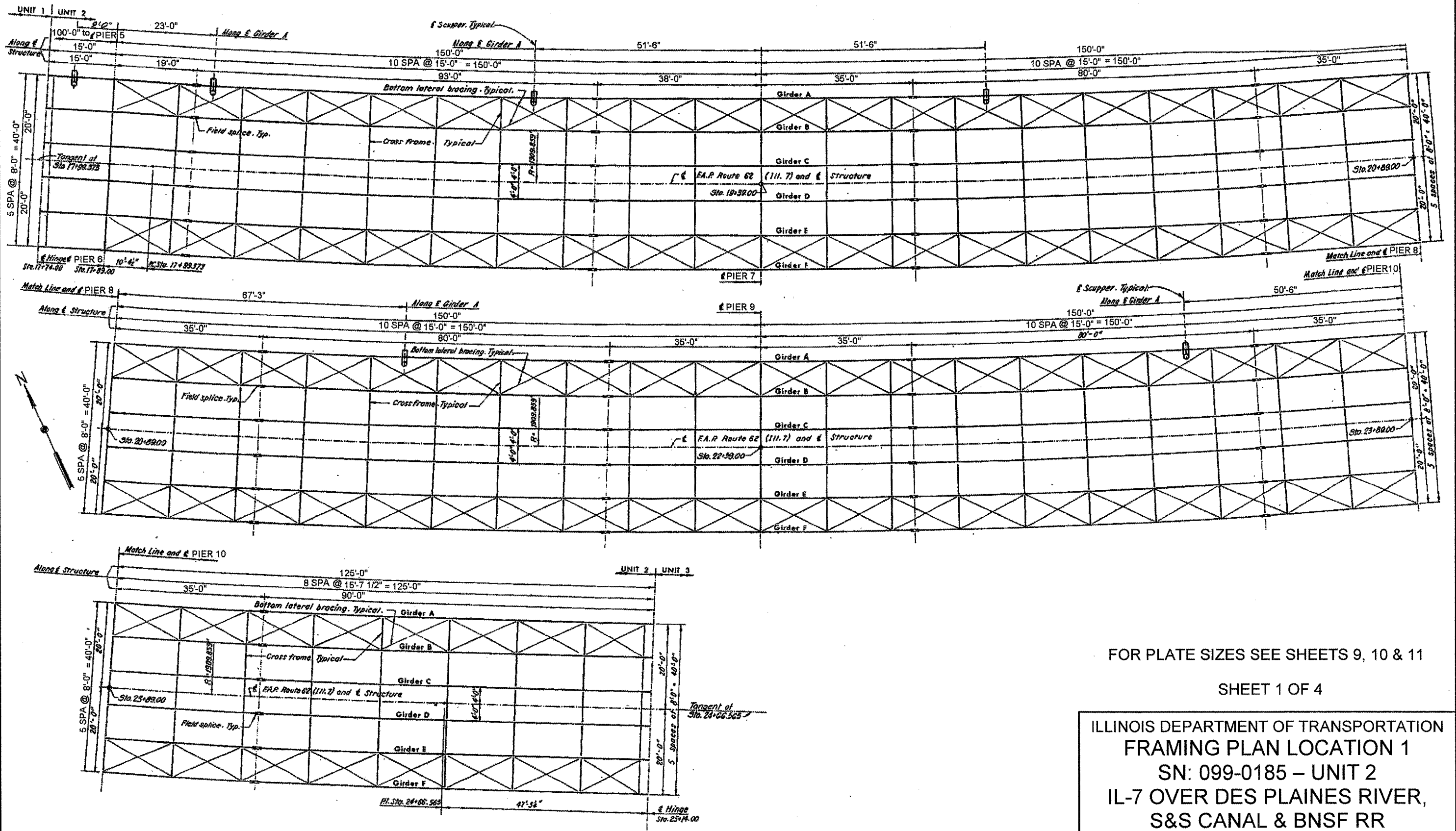
INTERIOR GIRDER

INTERMEDIATE CROSSFRAME CONNECTION

Note: Details not shown to be similar to those for Crossframe At Pier.

ILLINOIS DEPARTMENT OF TRANSPORTATION
 STEEL DETAILS LOCATION 1
 SN: 099-0185 – UNIT 1
 IL-7 OVER DES PLAINES RIVER,
 S&S CANAL & BNSF RR

ROUTE	SECTION	COUNTY	TOTAL SHEETS	SHEET NUMBER
FAP 351 & FAU 2831	2006-037BP	COOK & WILL	27	8

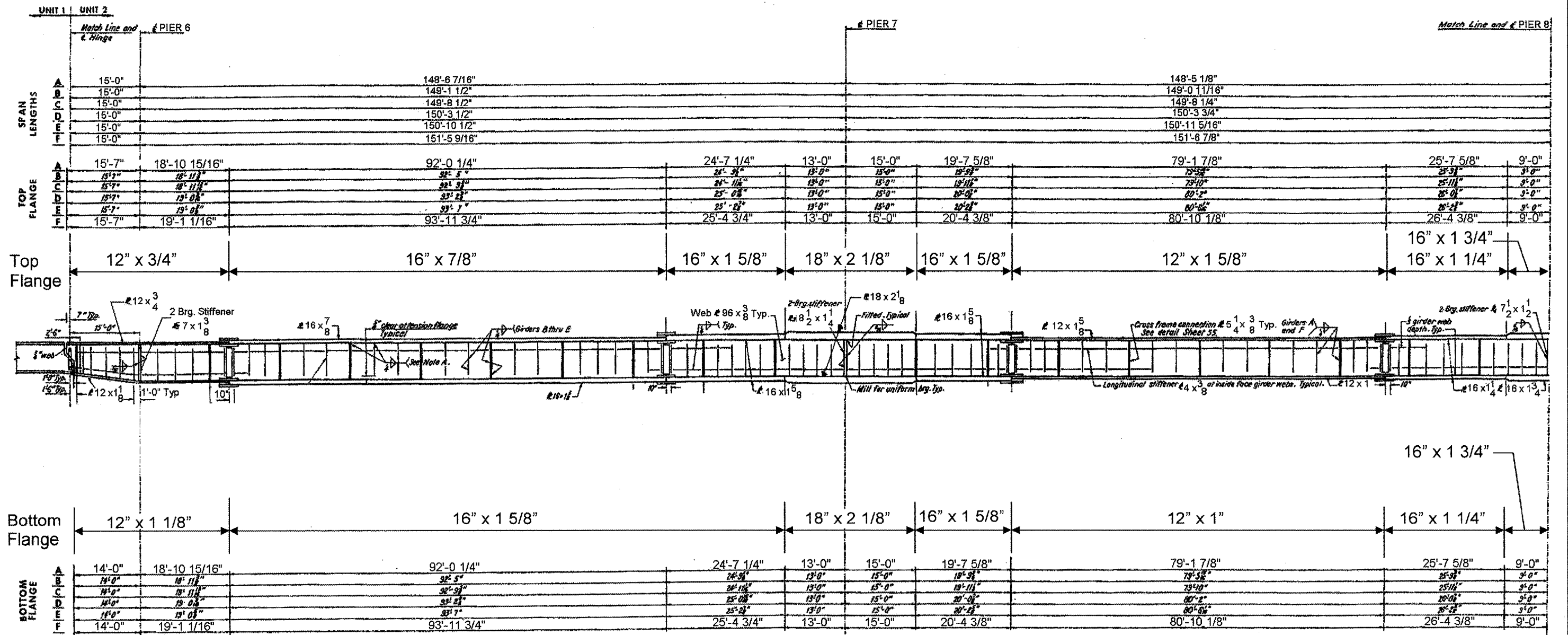


FOR PLATE SIZES SEE SHEETS 9, 10 & 11

SHEET 1 OF 4

ILLINOIS DEPARTMENT OF TRANSPORTATION
 FRAMING PLAN LOCATION 1
 SN: 099-0185 - UNIT 2
 IL-7 OVER DES PLAINES RIVER,
 S&S CANAL & BNSF RR

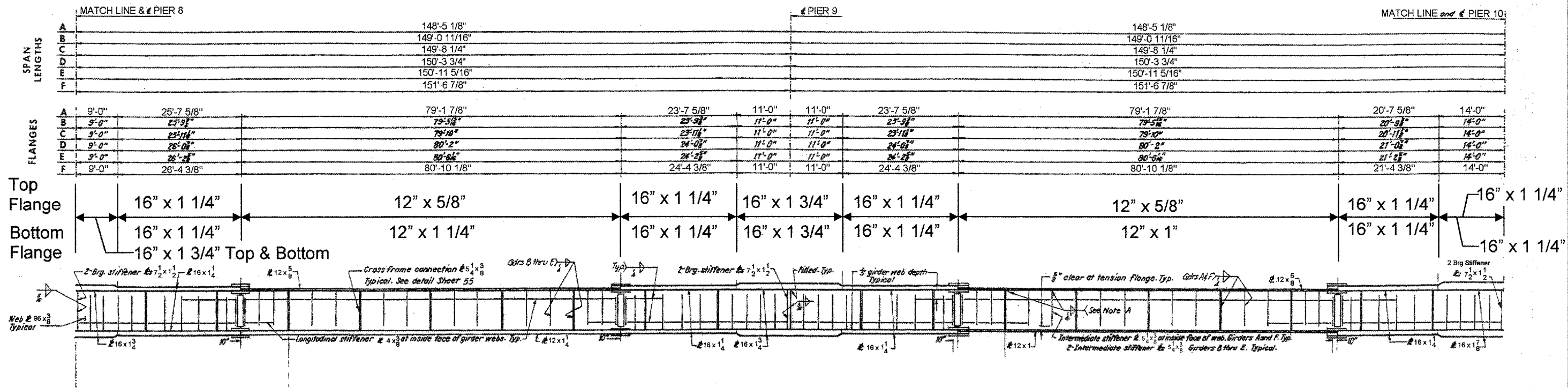
ROUTE	SECTION	COUNTY	TOTAL SHEETS	SHEET NUMBER
FAP 351 & FAU 2831	2006-037BP	COOK & WILL	27	9



SHEET 2 OF 4

ILLINOIS DEPARTMENT OF TRANSPORTATION
 GIRDER ELEVATION LOCATION 1
 SN: 099-0185 – UNIT 2
 IL-7 OVER DES PLAINES RIVER,
 S&S CANAL & BNSF RR

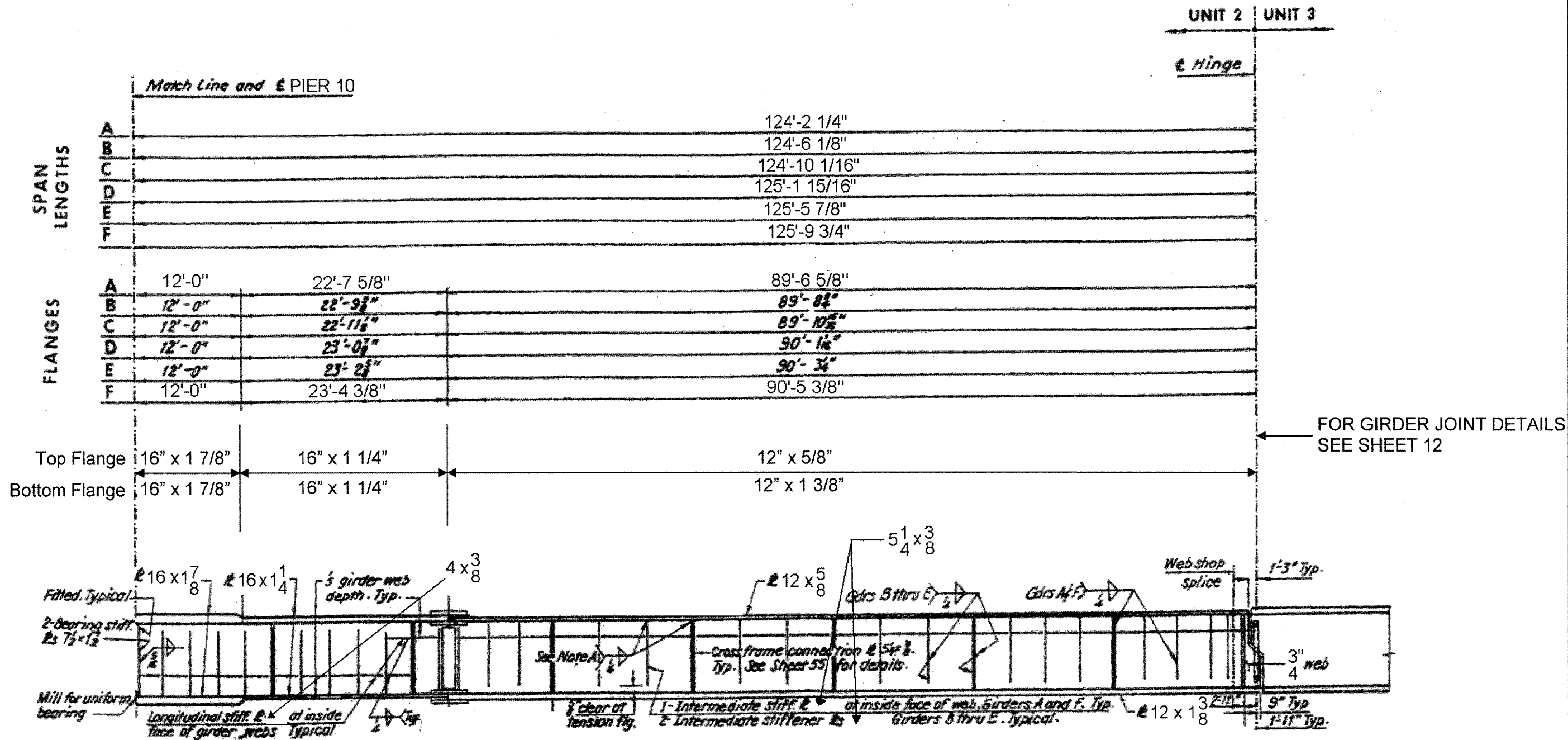
ROUTE	SECTION	COUNTY	TOTAL SHEETS	SHEET NUMBER
FAP 351 & FAU 2831	2006-037BP	COOK & WILL	27	10



SHEET 3 OF 4

ILLINOIS DEPARTMENT OF TRANSPORTATION
 GIRDER ELEVATION LOCATION 1
 SN: 099-0185 – UNIT 2
 IL-7 OVER DES PLAINES RIVER,
 S&S CANAL & BNSF RR

ROUTE	SECTION	COUNTY	TOTAL SHEETS	SHEET NUMBER
FAP 351 & FAU 2831	2006-037BP	COOK & WILL	27	11

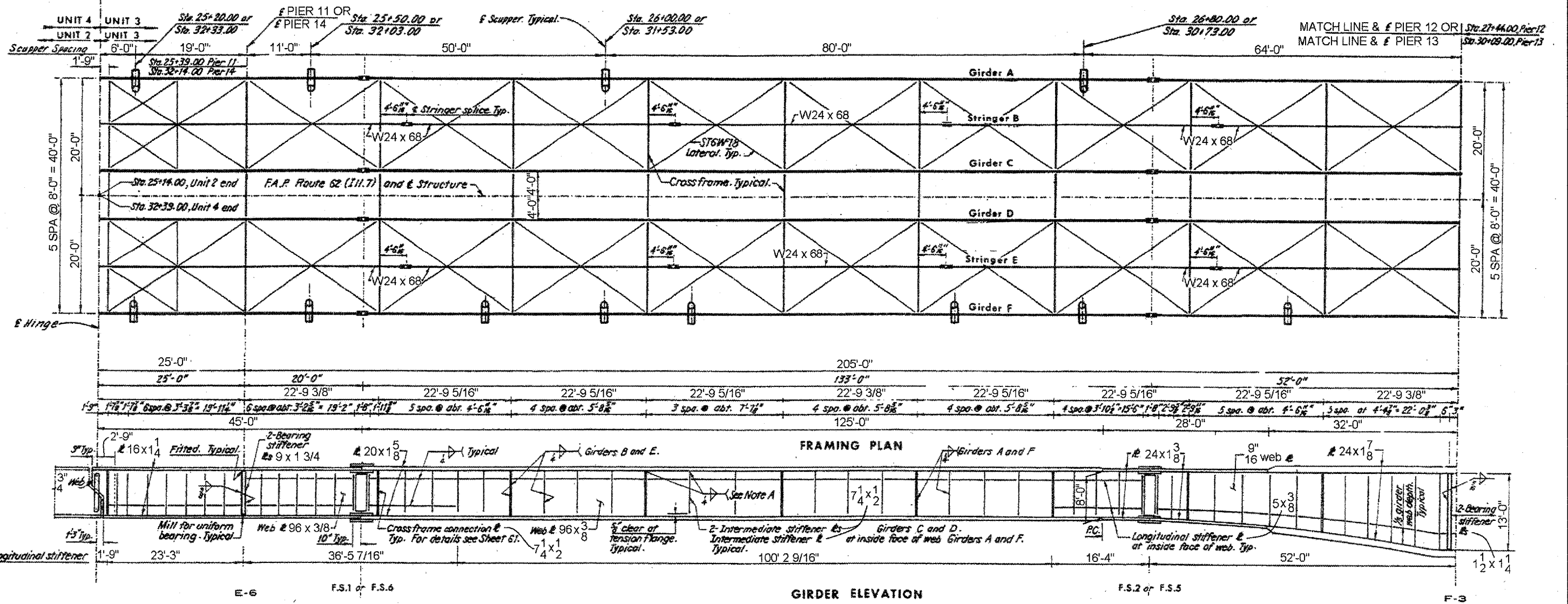


FOR GIRDER JOINT DETAILS SEE SHEET 12

SHEET 4 OF 4

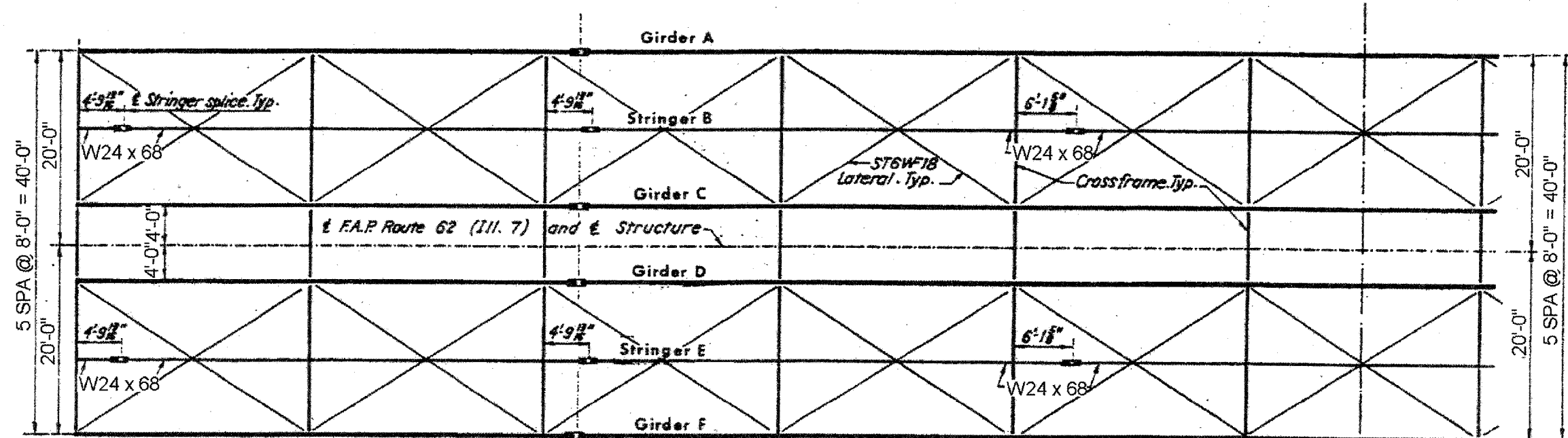
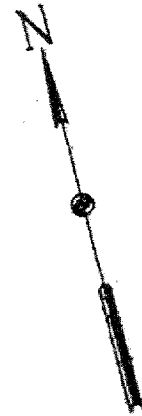
ILLINOIS DEPARTMENT OF TRANSPORTATION
GIRDER ELEVATION LOCATION 1
SN: 099-0185 - UNIT 2
IL-7 OVER DES PLAINES RIVER,
S&S CANAL & BNSF RR

ROUTE	SECTION	COUNTY	TOTAL SHEETS	SHEET NUMBER
FAP 351 & FAU 2831	2006-037BP	COOK & WILL	27	13



ILLINOIS DEPARTMENT OF TRANSPORTATION
 FRAMING PLAN LOCATION 1
 SN: 099-0185 - UNIT 3
 IL-7 OVER DES PLAINES RIVER,
 S&S CANAL & BNSF RR

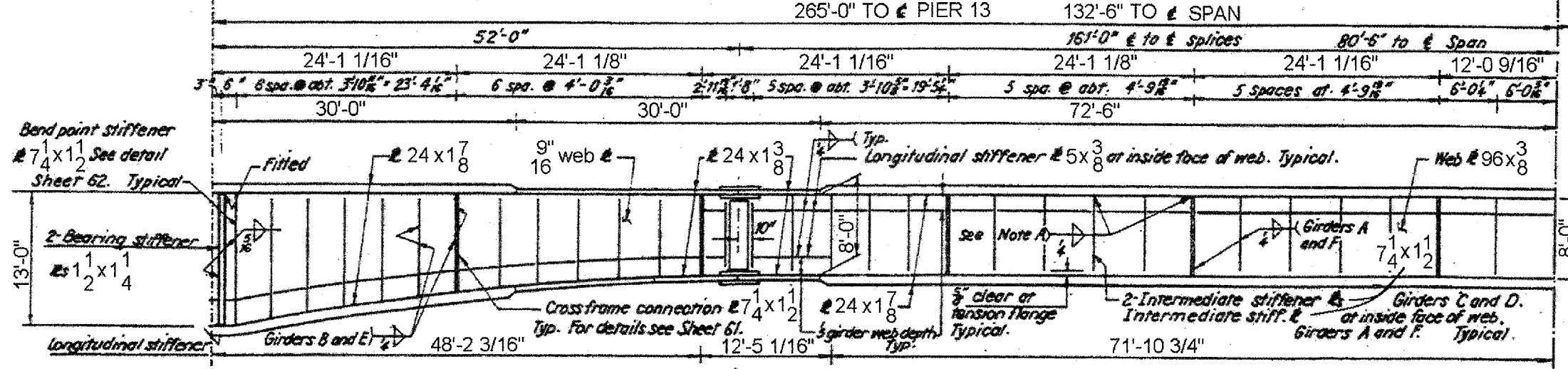
ROUTE	SECTION	COUNTY	TOTAL SHEETS	SHEET NUMBER
FAP 351 & FAU 2831	2006-037BP	COOK & WILL	27	14



MATCH LINE & PIER 12 OR Sta. 27+44.00, Pier 12
 MATCH LINE & PIER 13 Sta. 30+09.00, Pier 13

FRAMING PLAN

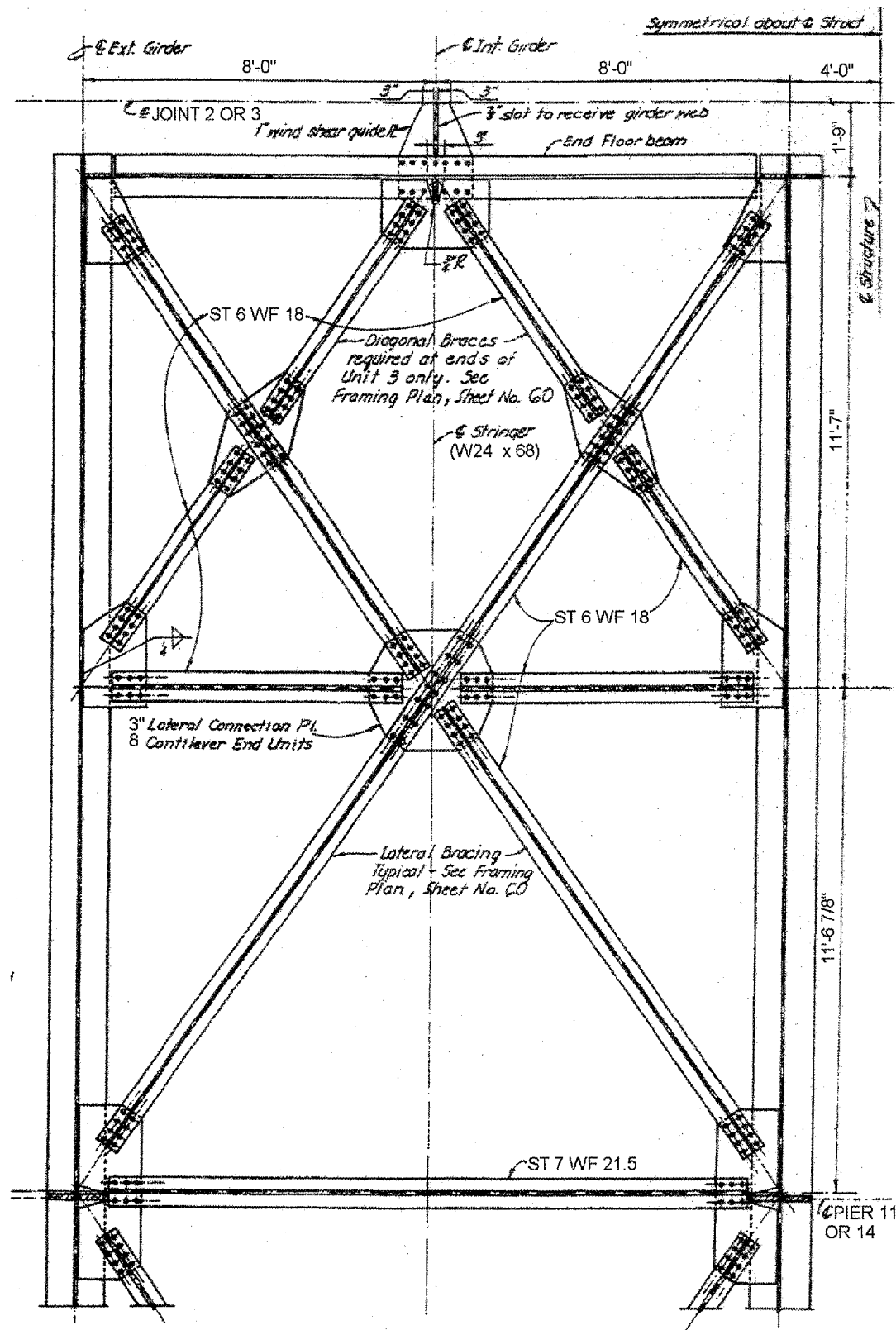
UNIT 3 SYMMETRICAL ABOUT C OF SPAN



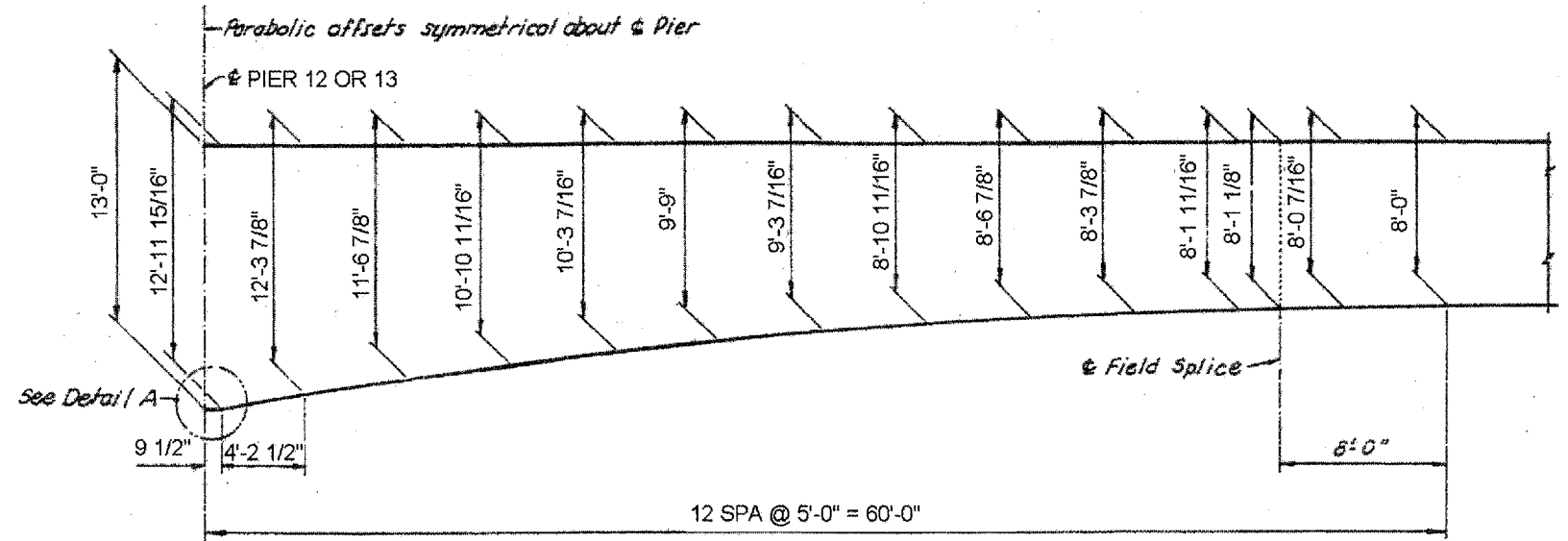
GIRDER ELEVATION

ILLINOIS DEPARTMENT OF TRANSPORTATION
 FRAMING PLAN LOCATION 1
 SN: 099-0185 - UNIT 3
 IL-7 OVER DES PLAINES RIVER,
 S&S CANAL & BNSF RR

ROUTE	SECTION	COUNTY	TOTAL SHEETS	SHEET NUMBER
FAP 351 & FAU 2831	2006-037BP	COOK & WILL	27	16



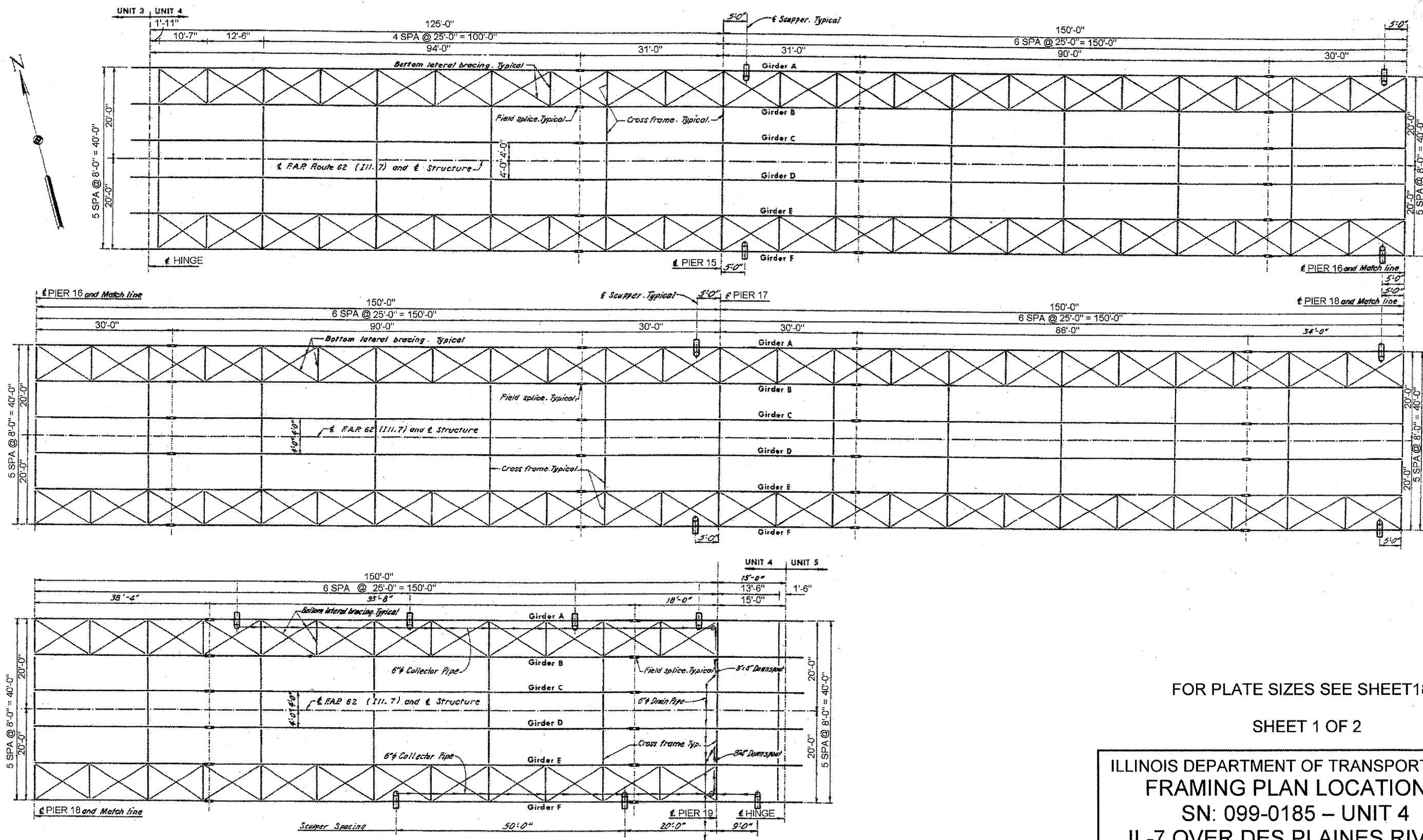
LATERAL DETAILS



GIRDER WEB TRANSITION

ILLINOIS DEPARTMENT OF TRANSPORTATION
FRAMING PLAN LOCATION 1
SN: 099-0185 - UNIT 3
IL-7 OVER DES PLAINES RIVER,
S&S CANAL & BNSF RR

ROUTE	SECTION	COUNTY	TOTAL SHEETS	SHEET NUMBER
FAP 351 & FAU 2831	2006-037BP	COOK & WILL	27	17

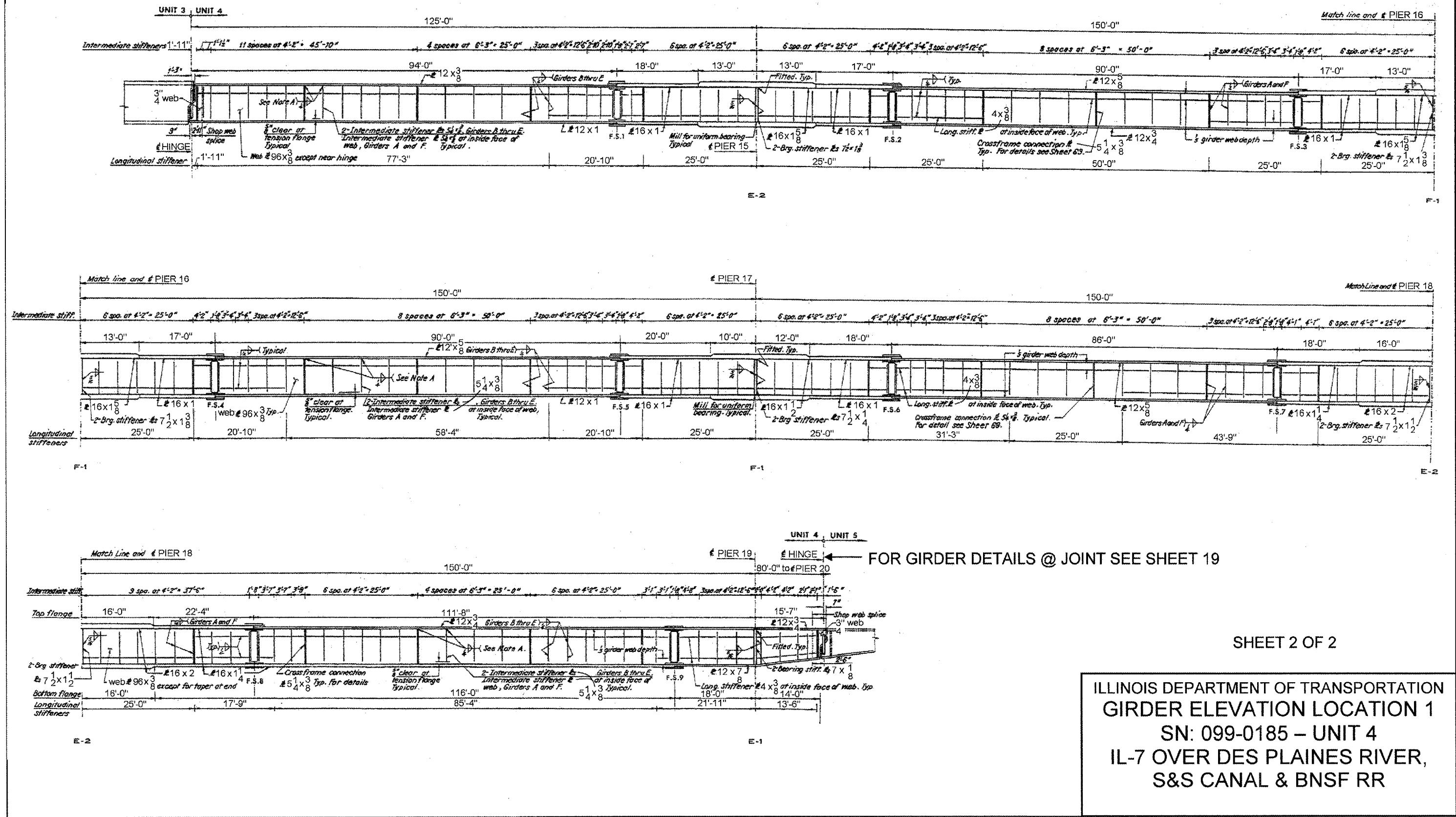


FOR PLATE SIZES SEE SHEET 18

SHEET 1 OF 2

ILLINOIS DEPARTMENT OF TRANSPORTATION
 FRAMING PLAN LOCATION 1
 SN: 099-0185 – UNIT 4
 IL-7 OVER DES PLAINES RIVER,
 S&S CANAL & BNSF RR

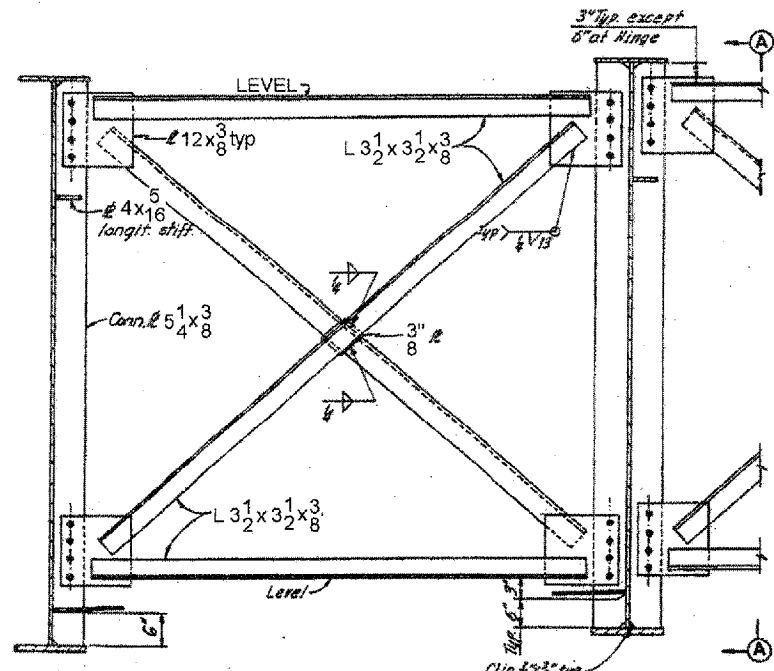
ROUTE	SECTION	COUNTY	TOTAL SHEETS	SHEET NUMBER
FAP 351 & FAU 2831	2006-037BP	COOK & WILL	27	18



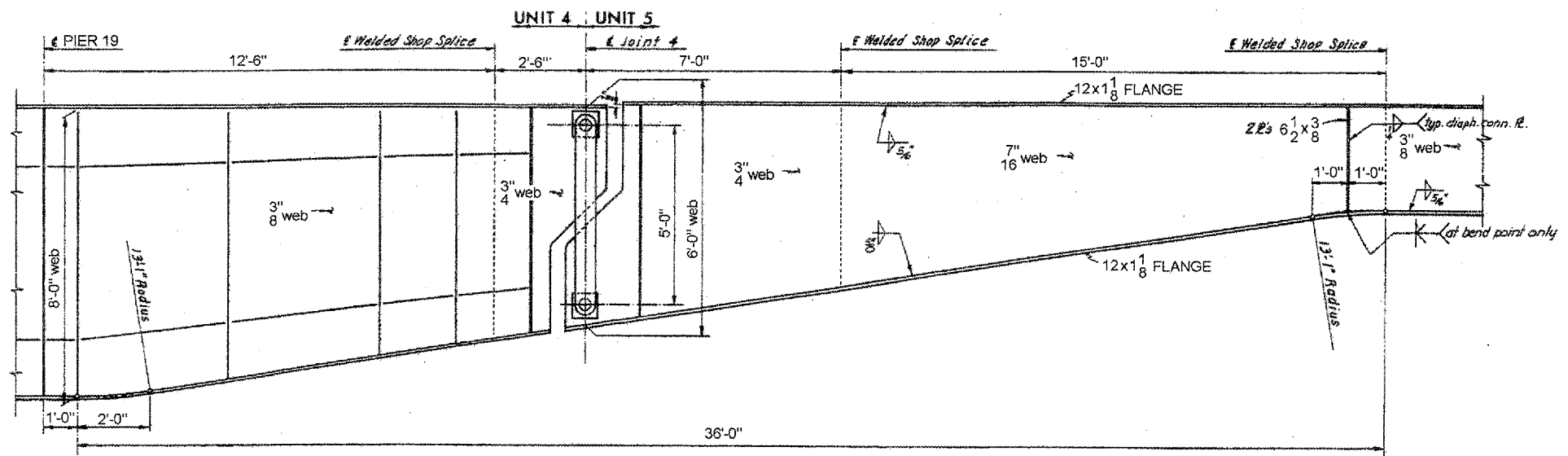
SHEET 2 OF 2

ILLINOIS DEPARTMENT OF TRANSPORTATION
 GIRDER ELEVATION LOCATION 1
 SN: 099-0185 – UNIT 4
 IL-7 OVER DES PLAINES RIVER,
 S&S CANAL & BNSF RR

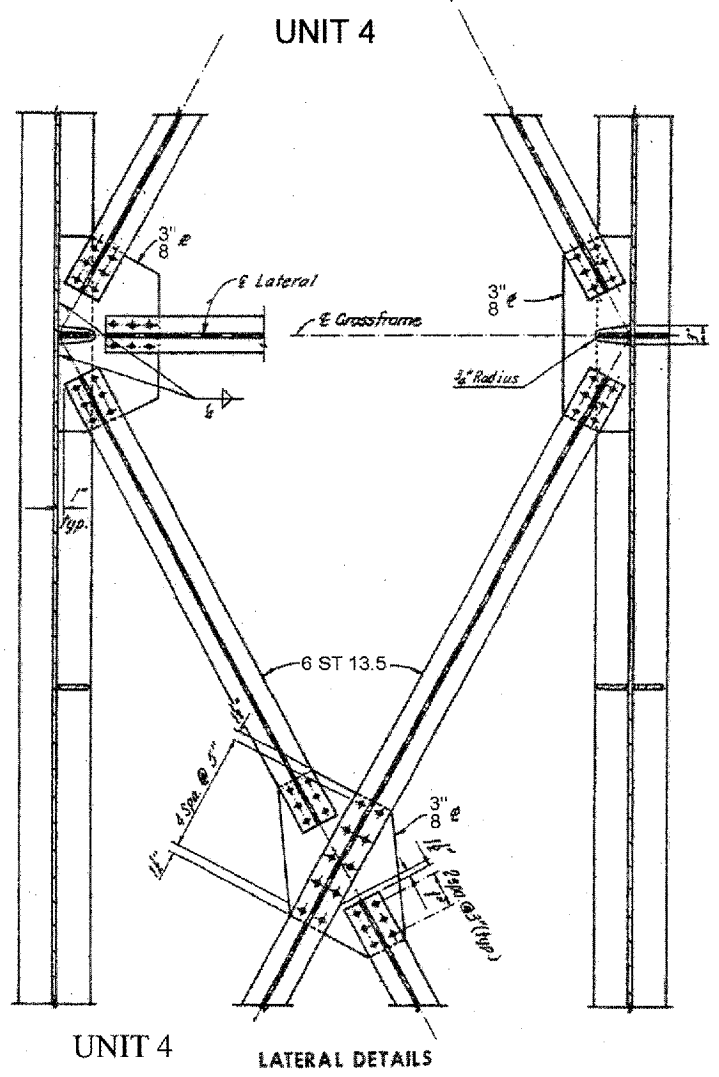
ROUTE	SECTION	COUNTY	TOTAL SHEETS	SHEET NUMBER
FAP 351 & FAU 2831	2006-037BP	COOK & WILL	27	19



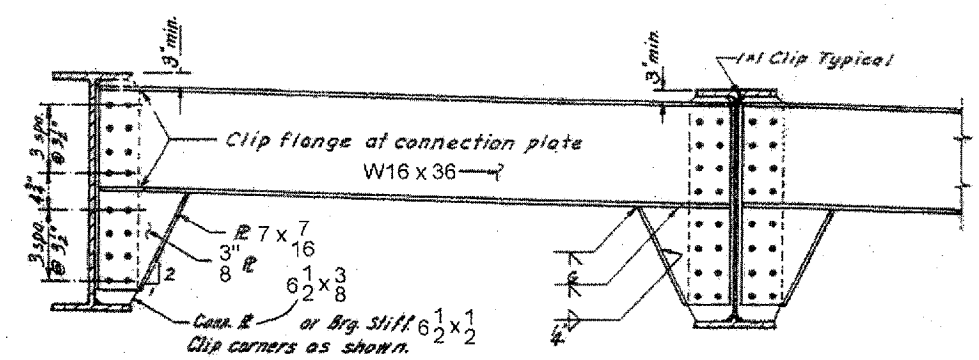
TYPICAL CROSSFRAME
(No lateral connection plates required at Joint 4.)



GIRDER DETAILS AT JOINT

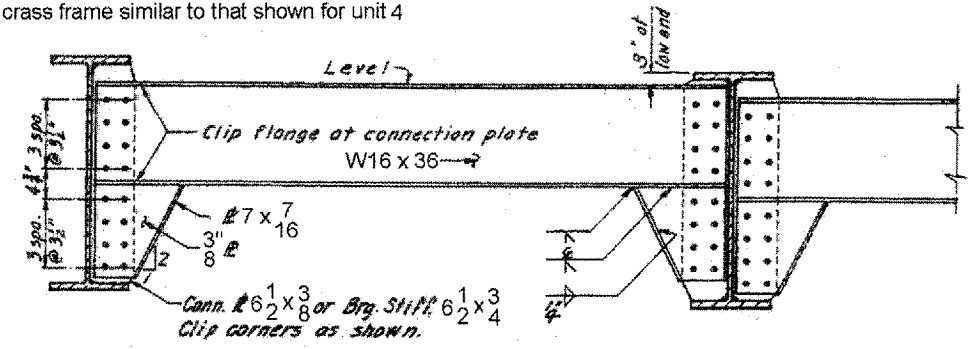


UNIT 4 LATERAL DETAILS



END DIAPHRAGM DETAIL
UNIT 5 & 6

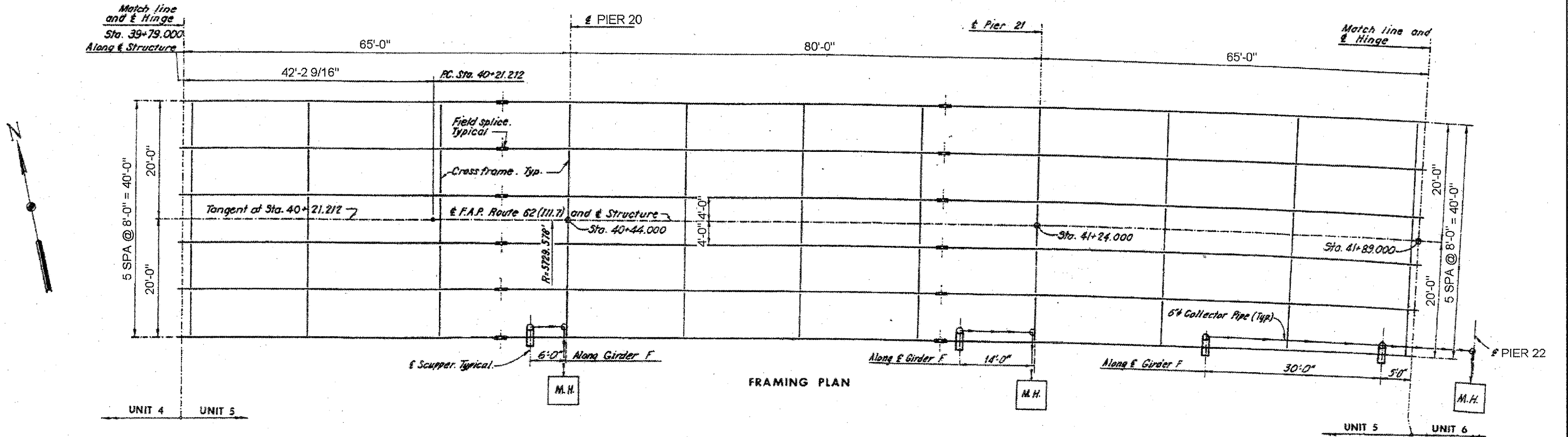
Note: Use End Diaphragm detail at joint 5 and at East Abutment. For Unit 5 at Joint 4 use cross frame similar to that shown for unit 4



INTERMEDIATE DIAPHRAGM DETAIL
UNIT 5 & 6

ILLINOIS DEPARTMENT OF TRANSPORTATION
STEEL DETAILS LOCATION 1
SN: 099-0185 – UNITS 4, 5 & 6
IL-7 OVER DES PLAINES RIVER,
S&S CANAL & BNSF RR

ROUTE	SECTION	COUNTY	TOTAL SHEETS	SHEET NUMBER
FAP 351 & FAU 2831	2006-037BP	COOK & WILL	27	20

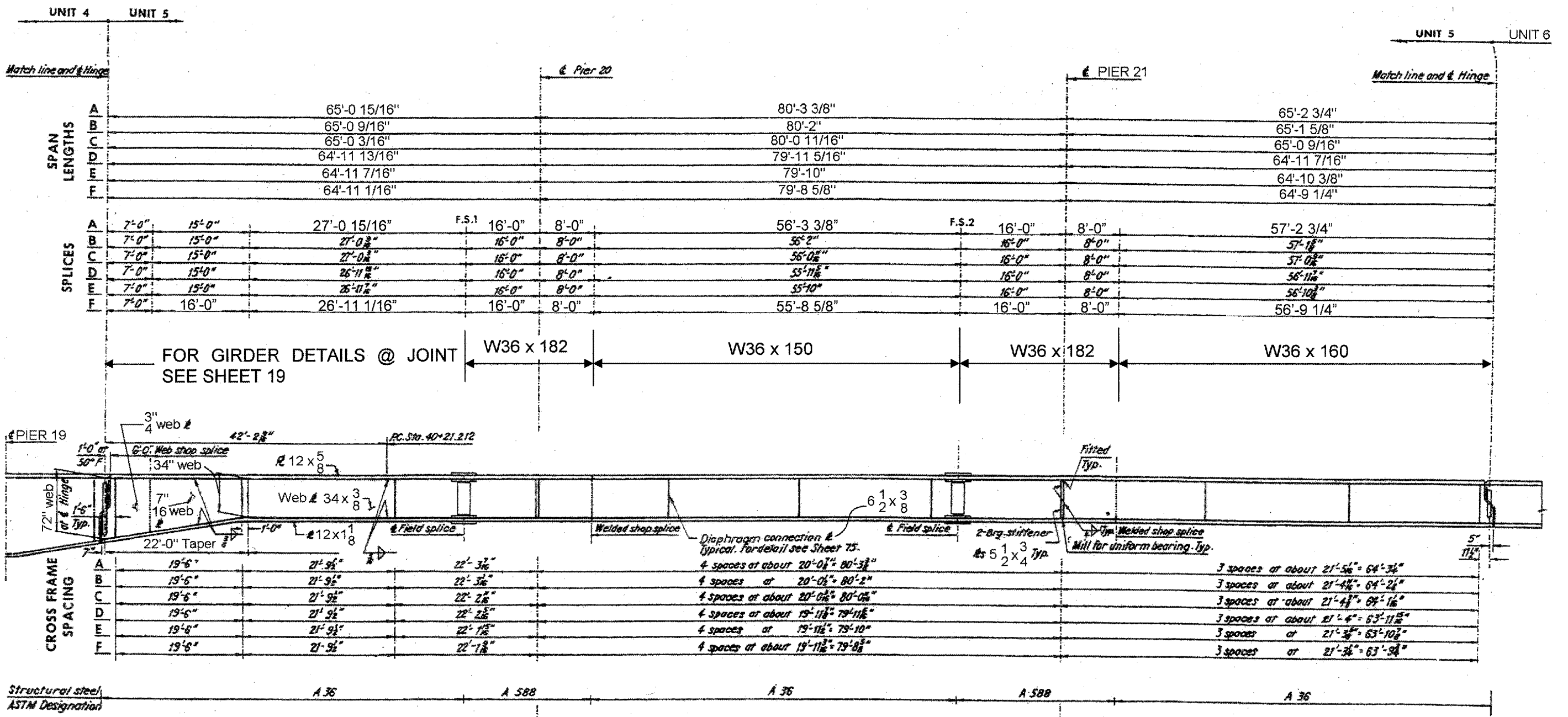


SEE SHEET 21 FOR BEAM SIZES

SHEET 1 OF 2

ILLINOIS DEPARTMENT OF TRANSPORTATION
FRAMING PLAN LOCATION 1
SN: 099-0185 – UNIT 5
IL-7 OVER DES PLAINES RIVER,
S&S CANAL & BNSF RR

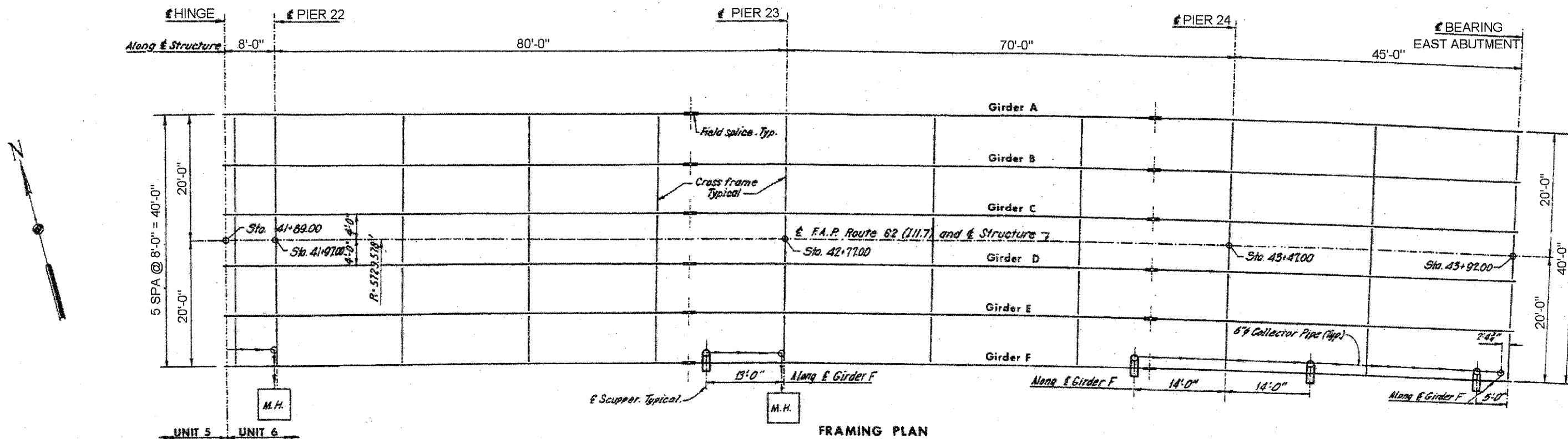
ROUTE	SECTION	COUNTY	TOTAL SHEETS	SHEET NUMBER
FAP 351 & FAU 2831	2006-037BP	COOK & WILL	27	21



GIRDER ELEVATION

ILLINOIS DEPARTMENT OF TRANSPORTATION
 GIRDER ELEVATION LOCATION 1
 SN: 099-0185 - UNIT 5
 IL-7 OVER DES PLAINES RIVER,
 S&S CANAL & BNSF RR

ROUTE	SECTION	COUNTY	TOTAL SHEETS	SHEET NUMBER
FAP 351 & FAU 2831	2006-037BP	COOK & WILL	27	22

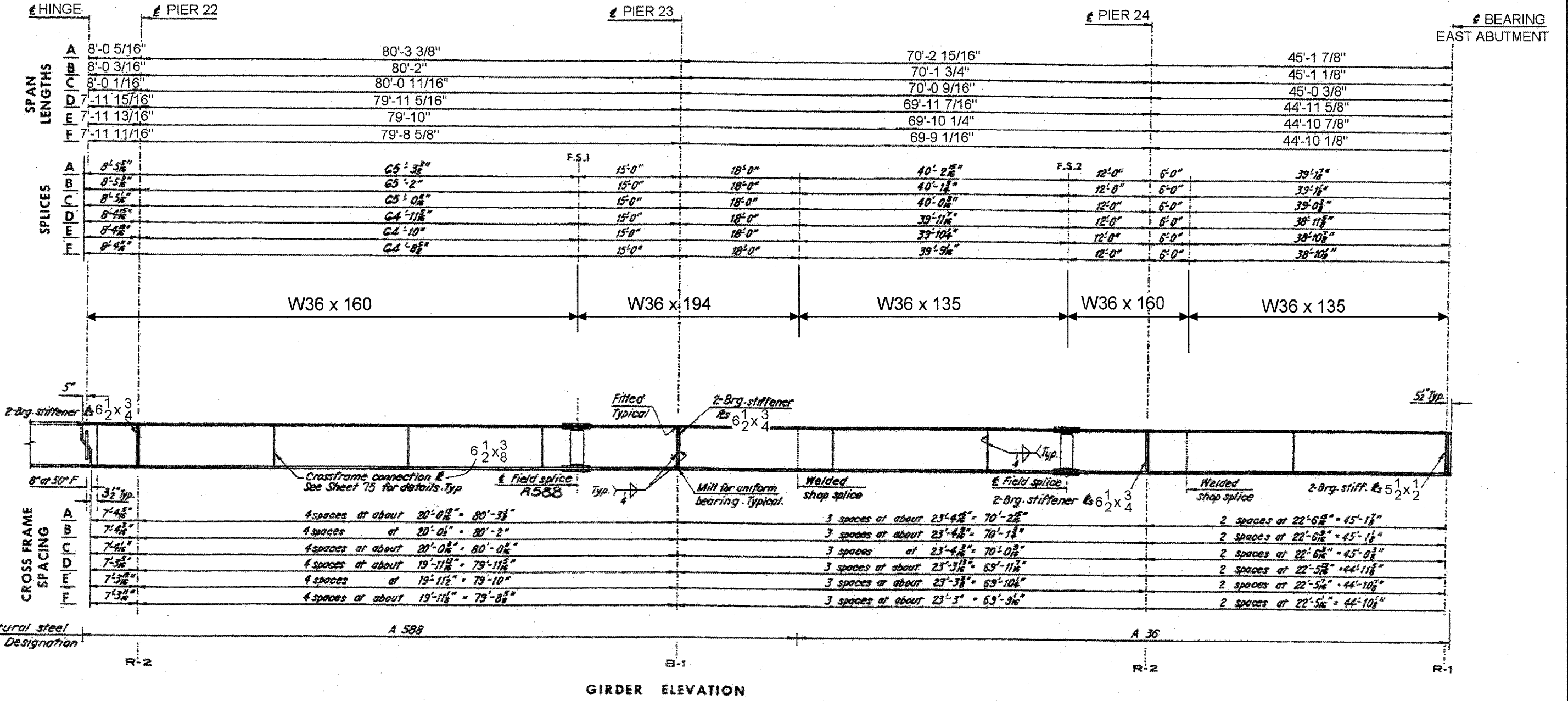


SEE SHEET 23 FOR BEAM SIZES

SHEET 1 OF 2

ILLINOIS DEPARTMENT OF TRANSPORTATION
 FRAMING PLAN LOCATION 1
 SN: 099-0185 – UNIT 6
 IL-7 OVER DES PLAINES RIVER,
 S&S CANAL & BNSF RR

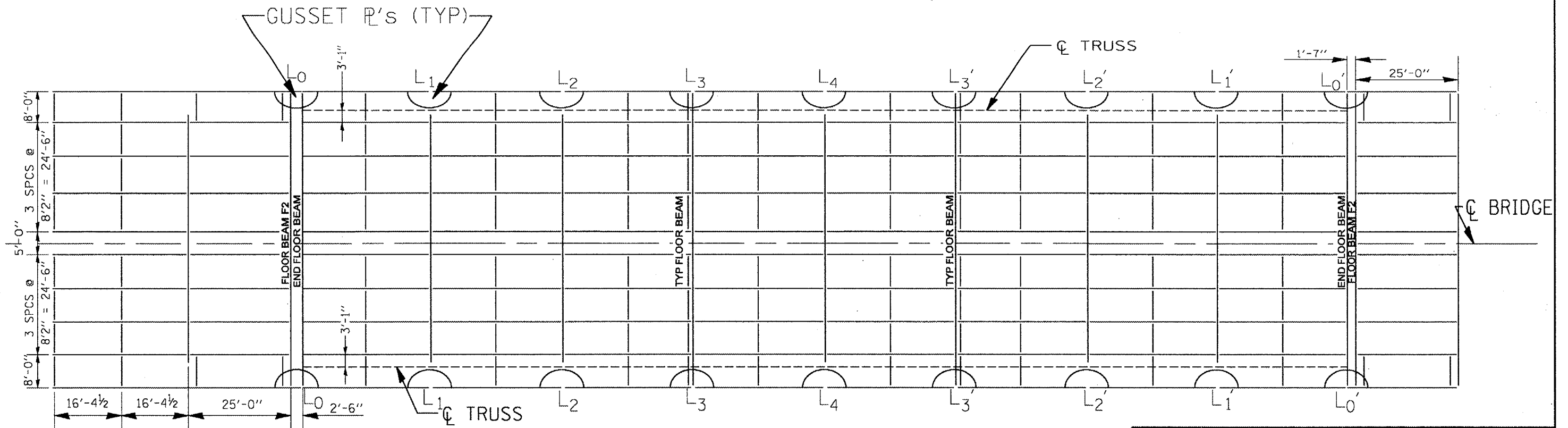
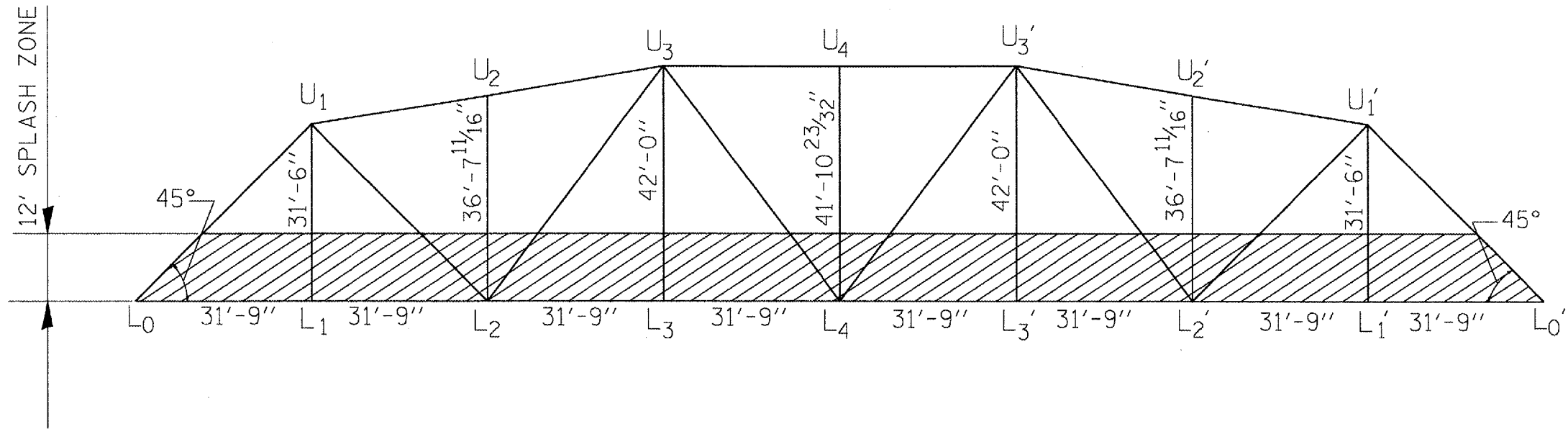
ROUTE	SECTION	COUNTY	TOTAL SHEETS	SHEET NUMBER
FAP 351 & FAU 2831	2006-037BP	COOK & WILL	27	23



SHEET 2 OF 2

ILLINOIS DEPARTMENT OF TRANSPORTATION
 GIRDER ELEVATION LOCATION 1
 SN: 099-0185 – UNIT 6
 IL-7 OVER DES PLAINES RIVER,
 S&S CANAL & BNSF RR

ROUTE	SECTION	COUNTY	TOTAL SHEETS	SHEET NUMBER
FAP 351 & FAU 2831	2006-037BP	COOK & WILL	27	24

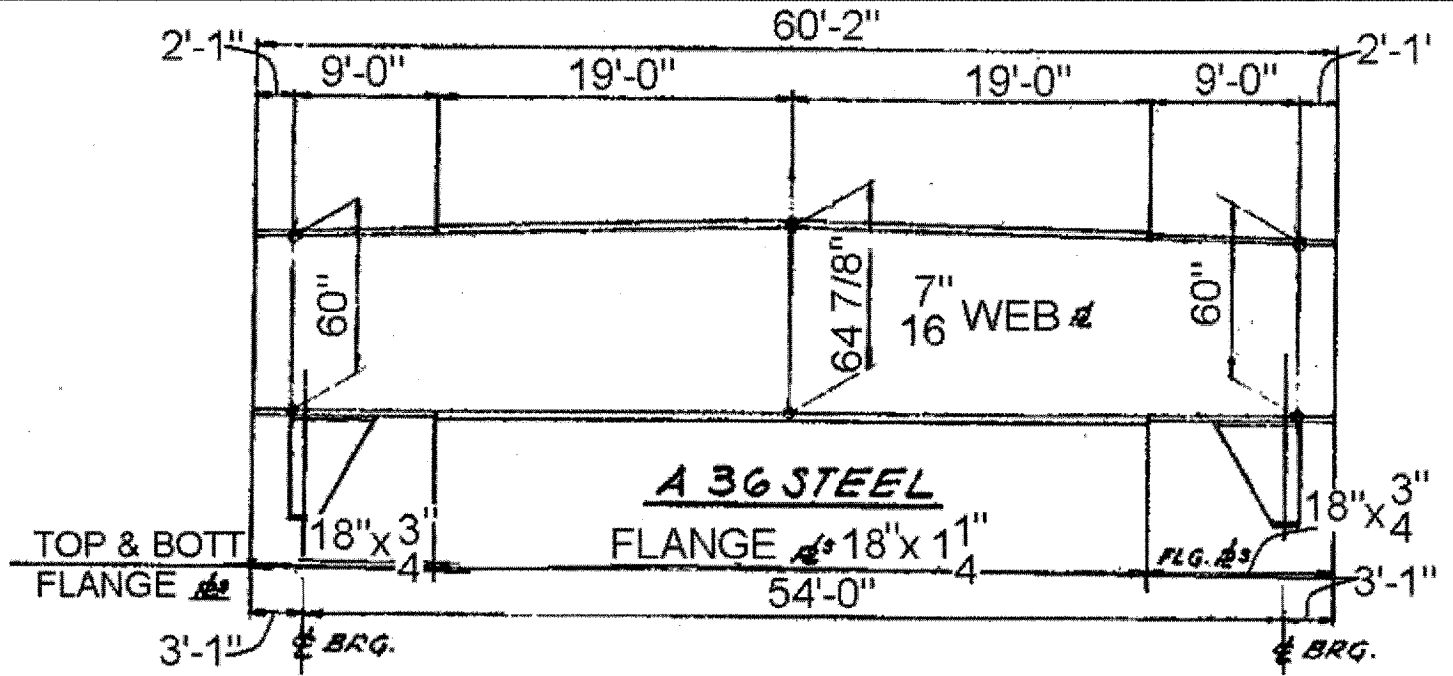


JOINTS @ L₀, L₃, L₃' & L₀'

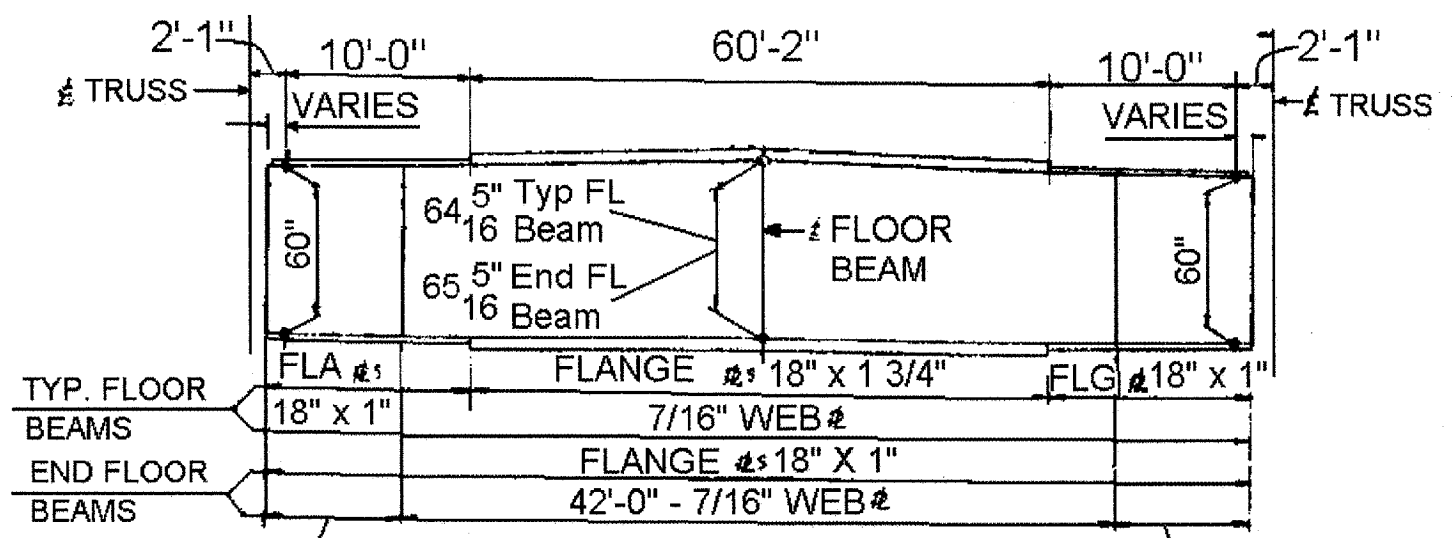
ILLINOIS DEPARTMENT OF TRANSPORTATION
FRAMING PLAN LOCATION 2
 SN: 016-0762
**KEDZIE AVE OVER THE
 CAL-SAG CHANNEL**

ROUTE	SECTION	COUNTY	TOTAL SHEETS	SHEET NUMBER
FAP 351 & FAU 2831	2006-037BP	COOK & WILL	27	25

MEMBER	SECTION	LENGTH C. TO C. JOINT FEET
L ₀ - U ₁	2 #5 24 x 5/8 2 #5 20 3/4 x 3/8 4 LS 8 x 6 x 1/2	44.986
U ₁ - U ₃	2 #5 24 x 5/8 2 #5 20 3/4 x 3/8 4 LS 8 x 6 x 1/2	32.225
U ₃ - U ₃ '	2 #5 24 x 5/8 2 #5 20 3/4 x 3/8 4 LS 8 x 6 x 1/2	31.750
U ₃ ' - U ₁ '	2 #5 24 x 5/8 2 #5 20 3/4 x 3/8 4 LS 8 x 6 x 1/2	32.211
U ₁ ' - L ₀ '	2 #5 24 x 5/8 2 #5 20 3/4 x 3/8 4 LS 8 x 6 x 1/2	44.931
L ₀ - L ₂	2 #5 24 x 3/4 1 # 20 1/2 x 5/8	31.752
L ₂ - L ₄	2 #5 24 x 1 1/8 1 # 19 3/4 x 1	31.751
L ₄ - L ₂	2 #5 24 x 1 1/8 1 # 19 3/4 x 1	31.750
L ₂ ' - L ₀	2 #5 24 x 3/4 1 # 20 1/2 x 5/8	31.751
U ₁ - L ₂	2 #5 16 x 3/4 1 # 20 1/2 x 1/2	44.465
L ₂ - U ₃	2 C15 x 33.9 2 #5 21 x 3/8	52.770
U ₃ - L ₄	2 #5 16 x 9/16 1 # 20 7/8 x 3/8	52.531
L ₄ - U ₃ '	2 #5 16 x 9/16 1 # 20 7/8 x 3/8	52.594
U ₃ ' - L ₂ '	2 C15 x 33.9 2 #5 21 x 3/8	52.707
L ₂ - U ₁ '	2 #5 16 x 3/4 1 # 20 1/2 x 1/2	44.520
U ₁ -L ₁ , U ₁ '-L ₁ '	2 #5 12 x 5/8 1 # 20 3/4 x 3/8	31.500
U ₂ -L ₂ , U ₂ '-L ₂ '	2 #5 12 x 1/2 1 # 21 x 1/2	36.640
U ₃ -L ₃ , U ₃ '-L ₃ '	2 #5 12 x 5/8 1 # 20 3/4 x 3/8	42.000
U ₄ - L ₄	2 #5 12 x 1/2 1 # 21 x 1/2	41.390



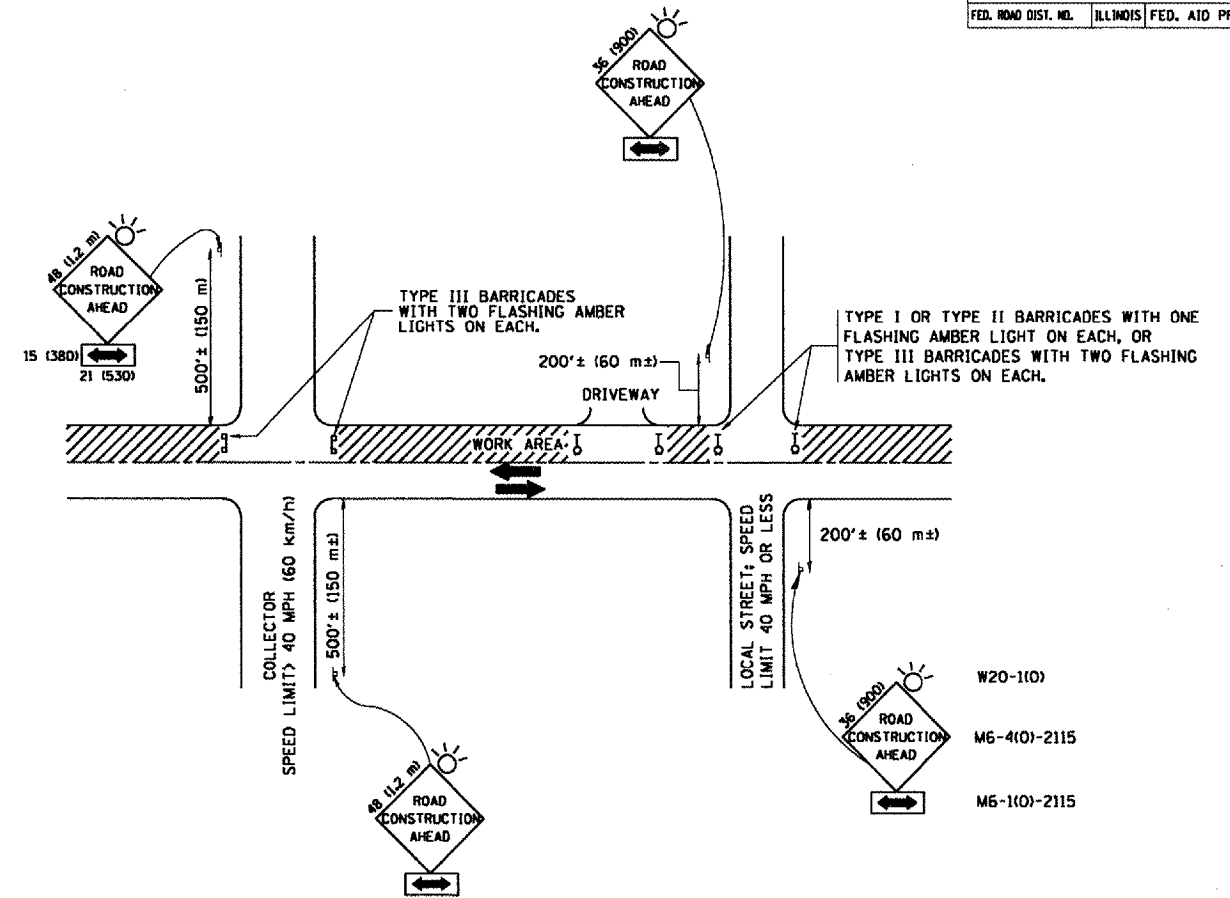
ELEVATION FLOOR BEAM F2
NO SCALE



FLOOR BEAM ELEVATION
NO SCALE

ILLINOIS DEPARTMENT OF TRANSPORTATION
STEEL DETAILS LOCATION 2
SN: 016-0762
KEDZIE AVE OVER THE
CAL-SAG CHANNEL

F.A.P./U. RTE.	SECTION	COUNTY	TOTAL SHEETS	SHEET NO.
351 & 2831	2006-037BP	COOK & WILL	27	26
STA.		TO STA.		
FED. ROAD DIST. NO.	ILLINOIS	FED. AID PROJECT		



TRAFFIC CONTROL AND PROTECTION FOR SIDE ROADS, INTERSECTIONS, AND DRIVEWAYS

NOTES:

- A. FOR NO LANE RESTRICTION ON THE SIDE ROAD OR DRIVEWAYS**
- SIDE ROAD WITH A SPEED LIMIT OF 40 MPH (60 km/h) OR LESS AS SHOWN ON THE DRAWING AND AS DIRECTED BY THE ENGINEER:
 - ONE ROAD CONSTRUCTION AHEAD SIGN 36 x 36 (900x900) WITH A FLASHER AND FLAG MOUNTED ON IT APPROXIMATELY 200' (60 m) IN ADVANCE OF THE MAIN ROUTE.
 - THE CLOSED PORTION OF THE MAIN ROUTE SHALL BE PROTECTED BY BLOCKING WITH TYPE I, TYPE II OR TYPE III BARRICADES, 1/3 OF THE CROSS SECTION OF THE CLOSED PORTION.
 - SIDE ROAD WITH A SPEED LIMIT GREATER THAN 40 MPH (60 km/h) AS SHOWN ON THE DRAWING AND AS DIRECTED BY THE ENGINEER:
 - ONE ROAD CONSTRUCTION AHEAD SIGN 48 x 48 (1.2 m x 1.2 m) WITH A FLASHER MOUNTED ON IT APPROXIMATELY 500' (150 m) IN ADVANCE OF THE MAIN ROUTE.
 - THE CLOSED PORTION OF THE MAIN ROUTE SHALL BE PROTECTED BY BLOCKING WITH TYPE III BARRICADES, 1/2 OF THE CROSS SECTION OF THE CLOSED PORTION.
- B. FOR A LANE CLOSURE ON A SIDE ROAD OR DRIVEWAY:**
- USE APPLICABLE PORTIONS OF THE TYPICAL APPLICATION OF TRAFFIC CONTROL DEVICES (STD. 701501, STD. 701606 OR THE APPROPRIATE STANDARD). THE SPACING OF SIGNS AND BARRICADES SHALL BE ADJUSTED FOR FIELD CONDITIONS AS DIRECTED BY THE ENGINEER. THE DIRECTIONAL ARROW SHALL BE COVERED OR REMOVED WHEN NO LONGER CONSISTENT WITH THE SIDE ROAD LANE CLOSURE.
- C. ADVANCE WARNING SIGNS ARE TO BE OMITTED ON DRIVEWAY UNLESS OTHERWISE NOTED.**
- D. THE TRAFFIC CONTROL AND PROTECTION FOR SIDE ROADS, INTERSECTIONS, AND DRIVEWAYS SHALL BE INCIDENTAL TO THE COST OF SPECIFIED TRAFFIC CONTROL STANDARDS OR ITEMS.**

All dimensions are in millimeters (inches) unless otherwise shown.

REVISIONS	
NAME	DATE
LHA	6/89
T. RAMMACHER	09/08/94
J. OBERLE	10/18/95
A. HOUSEH	03/06/96
A. HOUSEH	10/15/96
T. RAMMACHER	01/06/00

ILLINOIS DEPARTMENT OF TRANSPORTATION
TRAFFIC CONTROL AND PROTECTION FOR SIDE ROADS, INTERSECTIONS, AND DRIVEWAYS

SCALE: NONE

DRAWN BY

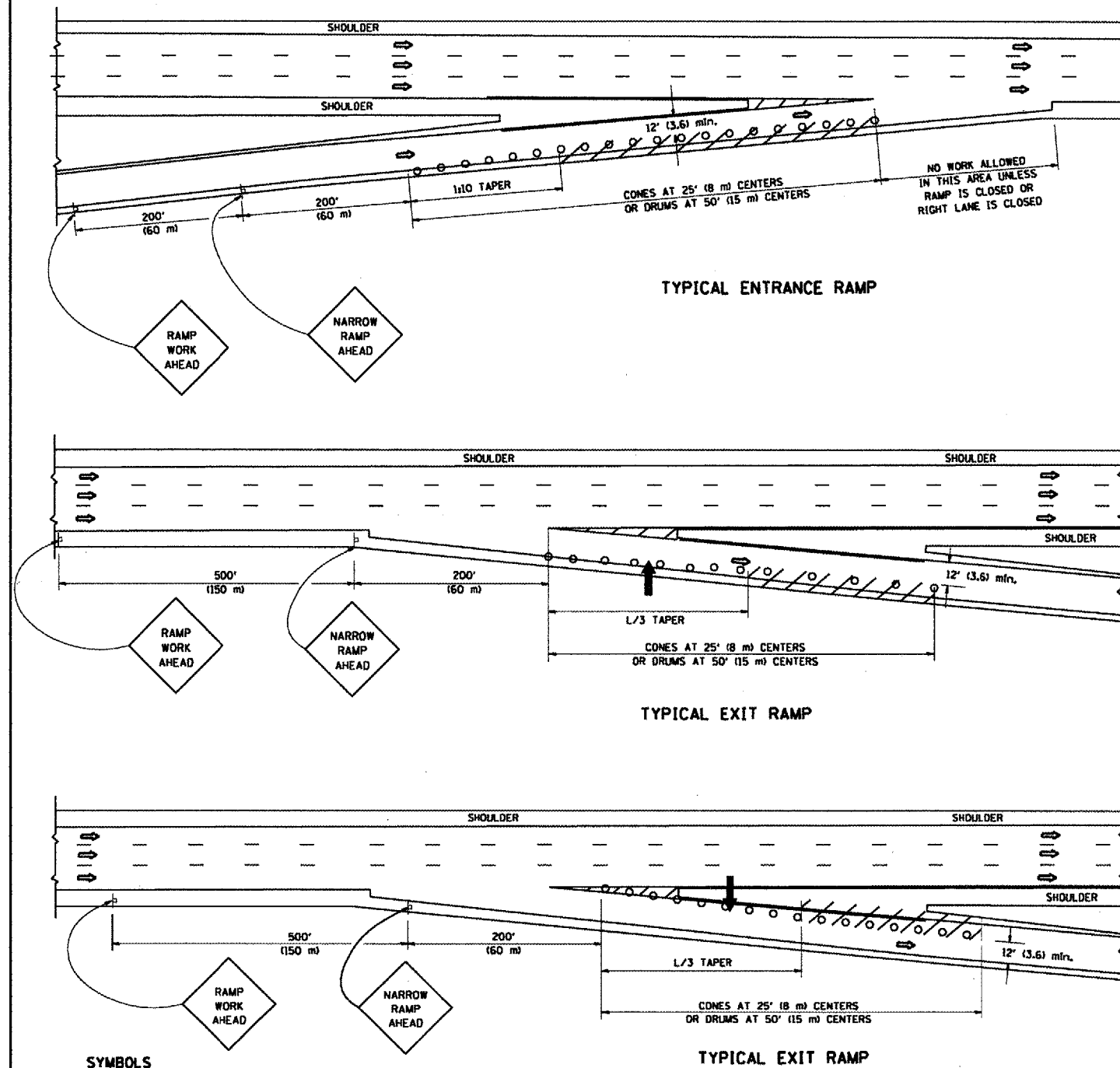
CHECKED BY

TC-10

PLOT DATE: 3/27/2007
 FILE NAME: c:\projects\60894\60894.dwg
 PLOT SCALE: 1/8"=1'-0"
 USER NAME: ANDRIS

F.A.P./U RTE. 281 & 283	SECTION 2006-037BP	COUNTY COOK & WILL	TOTAL SHEETS 27	SHEET NO. 27
STA. TO STA.		FED. ROAD DIST. NO. [ILLINOIS] FED. AID PROJECT		

PARTIAL RAMP CLOSURE DETAILS



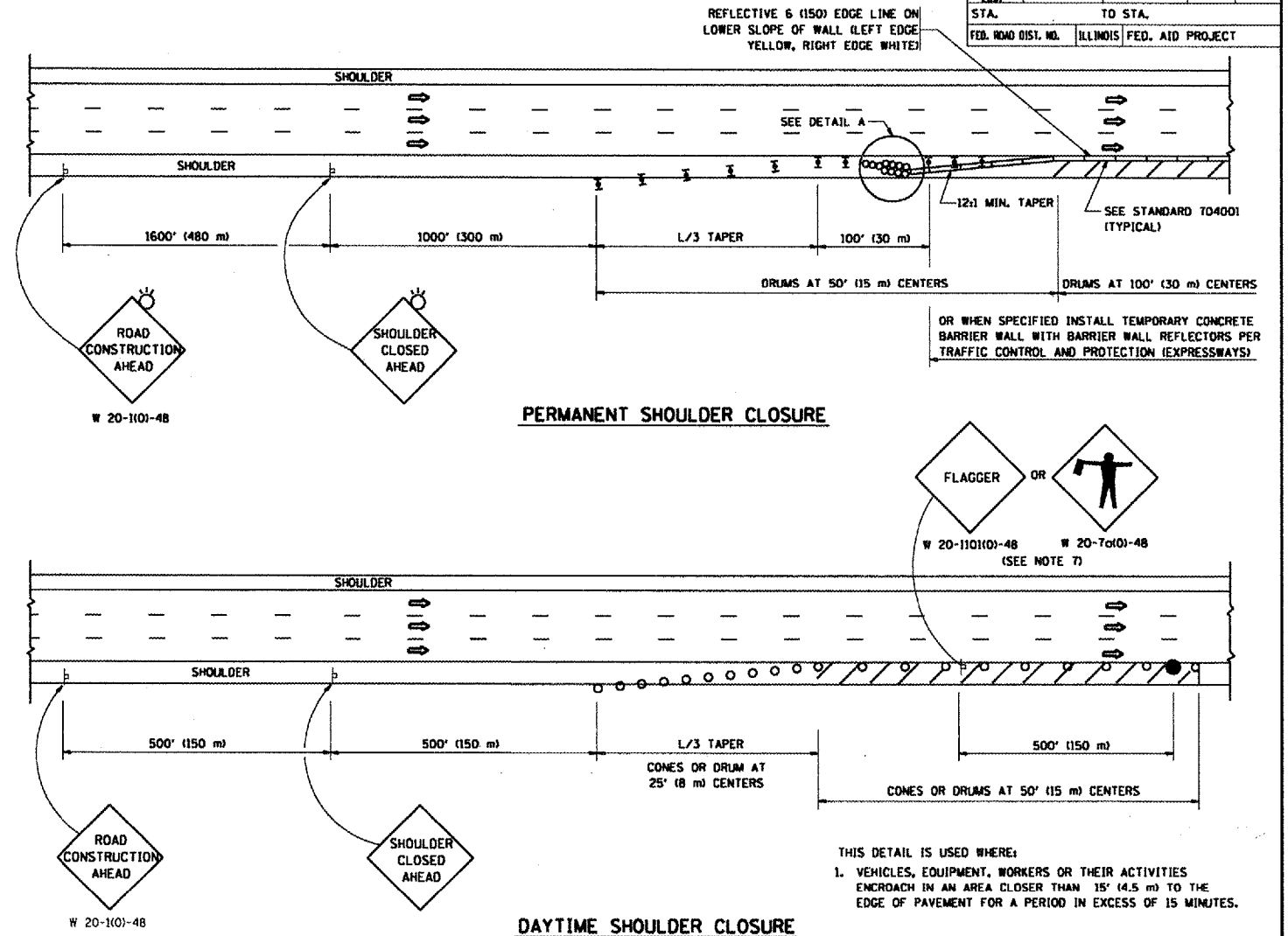
SYMBOLS

- ARROWBOARD
- WORK AREA
- SIGN ON PORTABLE OR PERMANENT SUPPORT
- FLAGGER WITH CONTROL SIGN
- TYPE II BARRICADE, DRUM OR VERTICAL BARRICADE WITH STEADY BURN MONO-DIRECTIONAL LIGHT
- CONE, DRUM OR BARRICADE

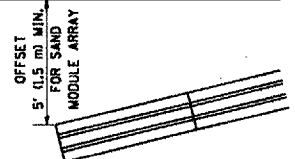
GENERAL NOTES

1. THE "L" DISTANCE EQUALS:
SPEED LIMIT FORMULAS
45 mph (80 km/h) OR GREATER: METRIC ENGLISH
 $L = 0.65(WKS)$ $L = (WKS)$
W = WIDTH OF OFFSET IN FEET (METERS)
S = NORMAL POSTED SPEED MPH (KM/H)
2. PLASTIC DRUMS WITH HIGH PERFORMANCE REFLECTIVE SHEETING AND STEADY BURNING LIGHTS ARE REQUIRED FOR ALL NIGHTTIME CLOSURES.
3. ALL SIGNS SHALL BE POST MOUNTED IF THE CLOSURE TIME EXCEEDS FOUR DAYS.
4. FLASHING LIGHTS SHALL BE USED DURING THE HOURS OF DARKNESS AND SHALL BE INSTALLED ABOVE THE FIRST TWO SETS OF SIGNS.

SHOULDER CLOSURE DETAILS



ARRAY DESIGN PER MANUFACTURER TO BE NCHRP 350 COMPLIANT FOR POSTED SPEED.



DETAIL "A"
IMPACT ATTENUATOR, TEMPORARY
(SEE NOTE 5)

ALL DIMENSIONS ARE IN INCHES (MILLIMETERS) UNLESS OTHERWISE SHOWN.

REVISIONS	
NAME	DATE
DWS	11/96
JAF	12/02
NCHRP 350	04/03
JAF	2/06
SPB	1/07

ILLINOIS DEPARTMENT OF TRANSPORTATION
**TRAFFIC CONTROL DETAILS
FOR FREEWAY
SHOULDER CLOSURES
PARTIAL RAMP CLOSURES**
DESIGNED BY: DWS
DRAWN BY:
CHECKED BY:
TC-17

PLOT DATE: 3/28/2007
 FILE NAME: c:\pwork\jaf\2006-037BP\281-283.dwg
 PLOT SCALE: 1/8"=1'-0"
 USER NAME: jaf