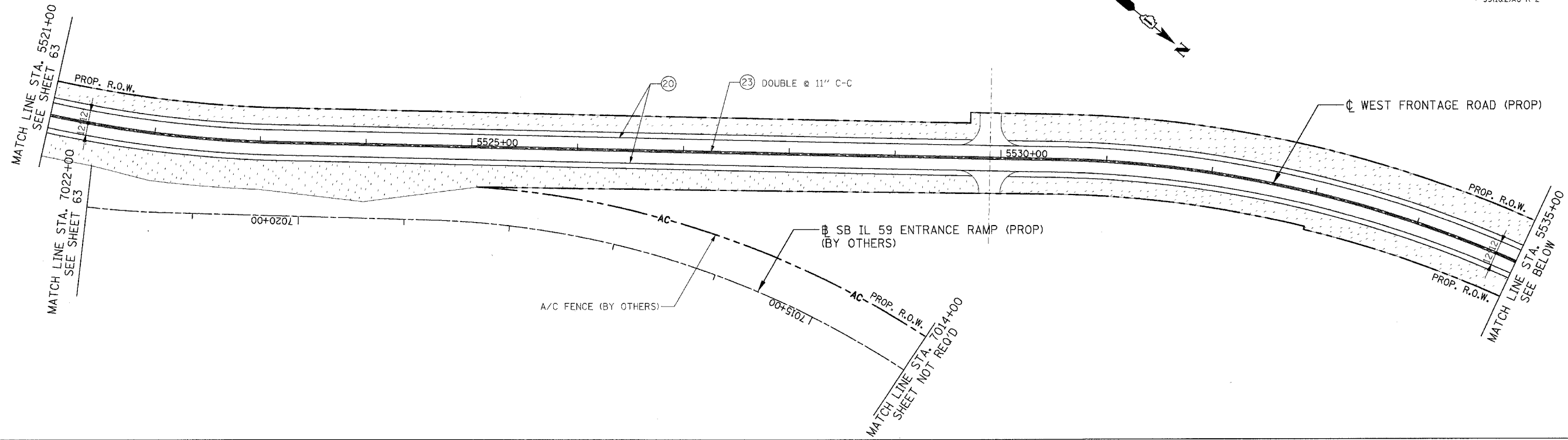
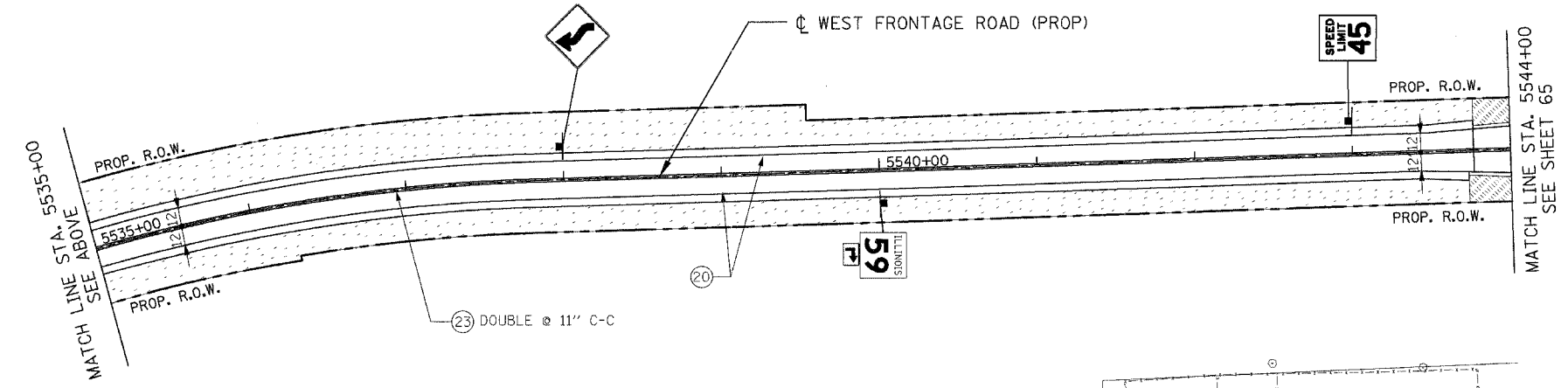


F.A.I. RTE.	SECTION	COUNTY	TOTAL SHEETS	SHEET NO.
59		WILL	102	64
STA.	TO STA.			
FED. ROAD DIST. NO. 1	ILLINOIS	FED. AID PROJECT		
• 99(1&2)AC-R-2		CONTRACT NO. 60B97		



SHOREWOOD



PAVEMENT MARKING LEGEND

- ②① THERMOPLASTIC PAVEMENT MARKING- LINE 4" (WHITE)
- ②③ THERMOPLASTIC PAVEMENT MARKING- LINE 4" (YELLOW)
- ②⑧ THERMOPLASTIC PAVEMENT MARKING- LINE 24" (WHITE)

SIGNING LEGEND

- ⌋ EXISTING GROUND/ BRIDGE MOUNTED SIGN
- ⌋ PROPOSED GROUND/ BRIDGE MOUNTED SIGN

LANDSCAPING LEGEND

- SEEDING CLASS 2A (SALT TOLERANT ROADSIDE MIXTURE) TOPSOIL FURNISH AND PLACE, 4" NITROGEN, PHOSPHOROUS AND POTASSIUM FERTILIZER NUTRIENTS (90 LBS/ACRE EACH)
- SODDING, SALT TOLERANT TOPSOIL FURNISH AND PLACE, 4" NITROGEN, PHOSPHOROUS AND POTASSIUM FERTILIZER NUTRIENTS (60 LBS/ACRE EACH)

- (X) TREE TRUNK PROTECTION (TTP)
- RAISED REFLECTIVE PAVEMENT MARKERS (TWO-WAY AMBER) TO BE PLACED PER DISTRICT 1 STANDARD TC-11.

REVISIONS	
NAME	DATE

ILLINOIS DEPARTMENT OF TRANSPORTATION
 FAI 55 WEST FRONTAGE ROAD AT IL 59
 SECTION: 99(1&2)AC-R-2
**PAVEMENT MARKING, SIGNING
 AND LANDSCAPING PLANS**
 STA. 5521+00 TO STA. 5544+00
 SCALE: 1" = 50'
 DATE: 03/22/2007
 DRAWN BY: BRH
 CHECKED BY: ACL
TENG
TENG & ASSOCIATES, INC.
 ENGINEERS/ARCHITECTS/PLANNERS
 265 N. MICHIGAN AVE. SUITE 1000, IL 60601
 TELEPHONE: 312.581.2000

\\AL100264.DGN, \\SR000267.DGN, \\SR000268.DGN, \\SR000269.DGN, \\SR000270.DGN, \\SR000271.DGN, \\SR000272.DGN, \\SR000273.DGN, \\SR000274.DGN, \\SR000275.DGN, \\SR000276.DGN, \\SR000277.DGN, \\SR000278.DGN, \\SR000279.DGN, \\SR000280.DGN, \\SR000281.DGN, \\SR000282.DGN, \\SR000283.DGN, \\SR000284.DGN, \\SR000285.DGN, \\SR000286.DGN, \\SR000287.DGN, \\SR000288.DGN, \\SR000289.DGN, \\SR000290.DGN, \\SR000291.DGN, \\SR000292.DGN, \\SR000293.DGN, \\SR000294.DGN, \\SR000295.DGN, \\SR000296.DGN, \\SR000297.DGN, \\SR000298.DGN, \\SR000299.DGN, \\SR000300.DGN, \\SR000301.DGN, \\SR000302.DGN, \\SR000303.DGN, \\SR000304.DGN, \\SR000305.DGN, \\SR000306.DGN, \\SR000307.DGN, \\SR000308.DGN, \\SR000309.DGN, \\SR000310.DGN, \\SR000311.DGN, \\SR000312.DGN, \\SR000313.DGN, \\SR000314.DGN, \\SR000315.DGN, \\SR000316.DGN, \\SR000317.DGN, \\SR000318.DGN, \\SR000319.DGN, \\SR000320.DGN, \\SR000321.DGN, \\SR000322.DGN, \\SR000323.DGN, \\SR000324.DGN, \\SR000325.DGN, \\SR000326.DGN, \\SR000327.DGN, \\SR000328.DGN, \\SR000329.DGN, \\SR000330.DGN, \\SR000331.DGN, \\SR000332.DGN, \\SR000333.DGN, \\SR000334.DGN, \\SR000335.DGN, \\SR000336.DGN, \\SR000337.DGN, \\SR000338.DGN, \\SR000339.DGN, \\SR000340.DGN, \\SR000341.DGN, \\SR000342.DGN, \\SR000343.DGN, \\SR000344.DGN, \\SR000345.DGN, \\SR000346.DGN, \\SR000347.DGN, \\SR000348.DGN, \\SR000349.DGN, \\SR000350.DGN, \\SR000351.DGN, \\SR000352.DGN, \\SR000353.DGN, \\SR000354.DGN, \\SR000355.DGN, \\SR000356.DGN, \\SR000357.DGN, \\SR000358.DGN, \\SR000359.DGN, \\SR000360.DGN