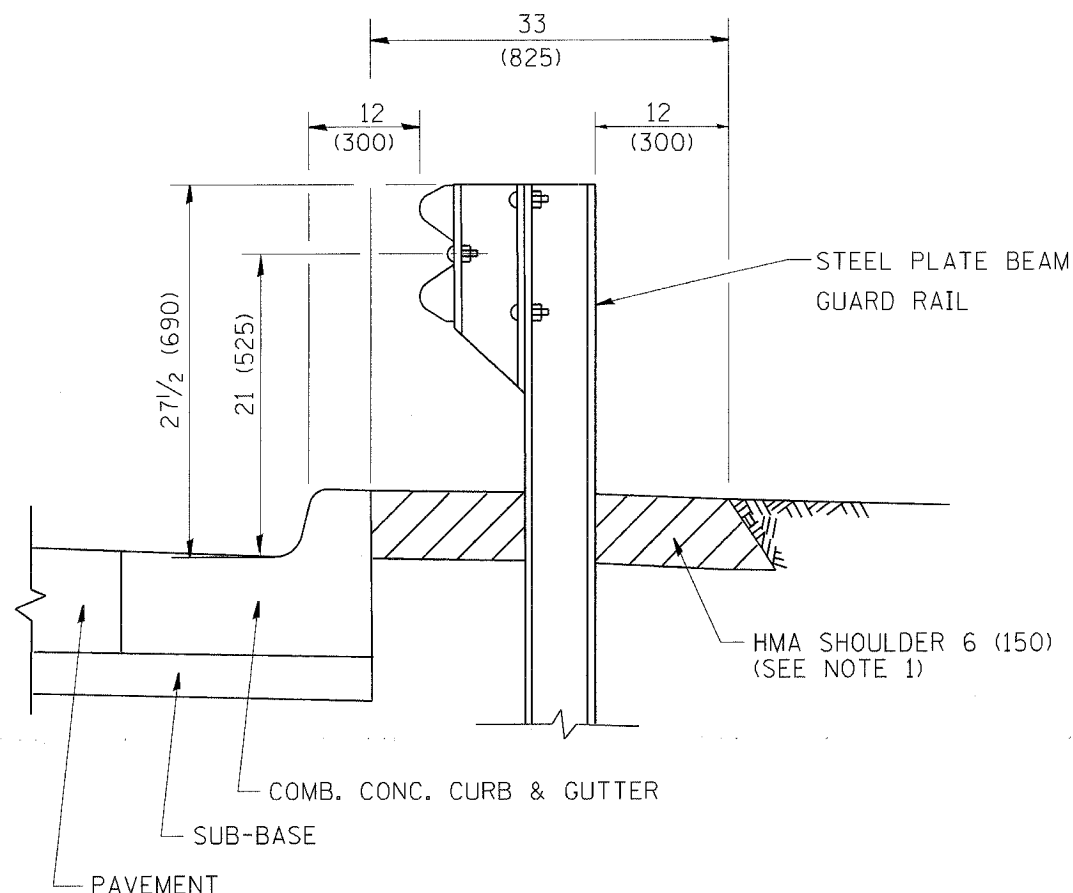


|   |         |         |              |           |
|---|---------|---------|--------------|-----------|
| F.A. RTE.                                       | SECTION | COUNTY  | TOTAL SHEETS | SHEET NO. |
|   |         |         | 102          | 72        |
| STA.  |         | TO STA. |              |           |
| FED. ROAD DIST. NO. 1 ILLINOIS FED. AID PROJECT |         |         |              |           |

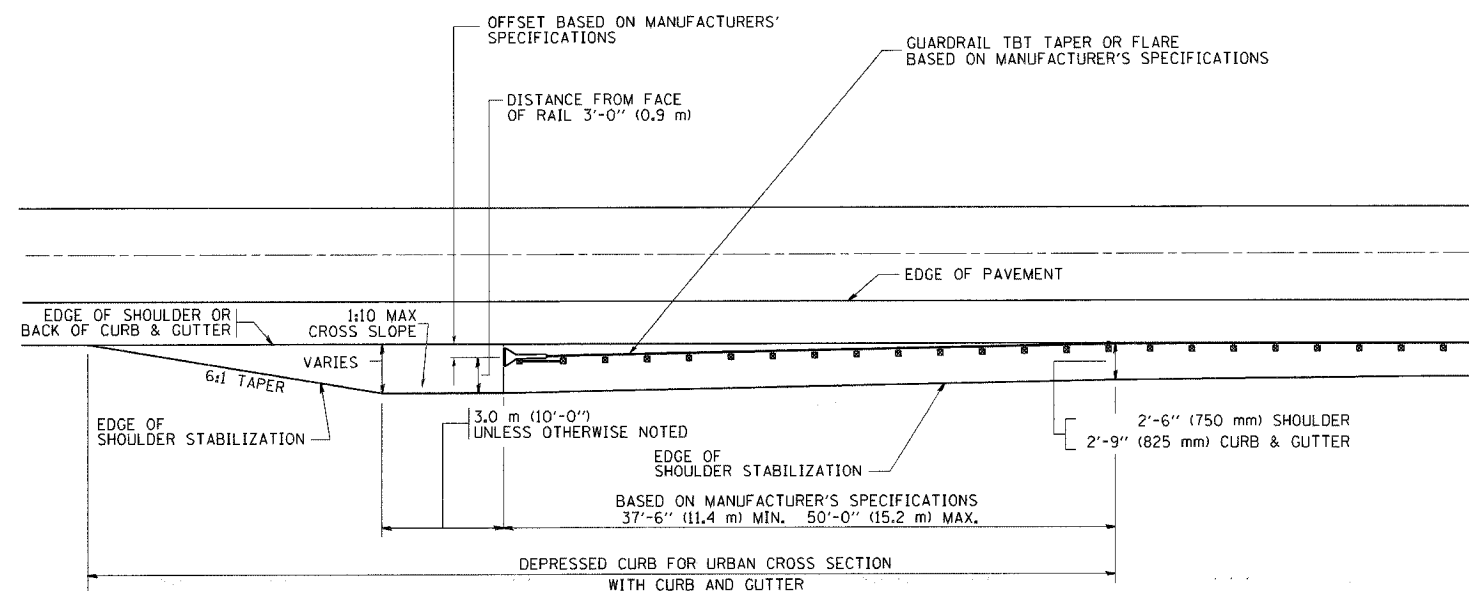


- NOTES: 1. THE HMA SHOULDER SHALL EXTEND UNDER THE TRAFFIC BARRIER TERMINAL
2. GUARD RAIL MAY BE PLACED AT THE BACK OF CURB WHEN DIRECTED BY THE ENGINEER.

BASIS OF PAYMENT: HMA SHOULDER 6 (150) WILL BE PAID FOR AT THE CONTRACT UNIT PRICE PER SQUARE YARD (SQUARE METER) FOR "HOT-MIX ASPHALT SHOULDER 6" (150 mm)".

STEEL PLATE BEAM GUARD RAIL AND TRAFFIC BARRIER TERMINAL, OF THE TYPE SPECIFIED WILL BE PAID FOR SEPARATELY.

**DETAILS FOR STEEL PLATE BEAM GUARD RAIL ADJACENT TO CURB AND GUTTER**  
 [FOR ROADWAY SPEED 35 MPH (60 kmh) TO 45 MPH (70 kmh)]



**STABILIZATION AT TBT TY. 1 SPL.**

TBT = TRAFFIC BARRIER TERMINAL  
 ALL DIMENSIONS ARE IN INCHES (MILLIMETERS) UNLESS OTHERWISE SHOWN.

| REVISIONS  |          |
|------------|----------|
| NAME       | DATE     |
| M. DE YONG | 09-22-90 |
| M. DE YONG | 07-14-92 |
| R. SHAH    | 09/09/94 |
| R. SHAH    | 10/25/94 |
| R. SHAH    | 02/23/95 |
| A. ABBAS   | 03/21/97 |
| E. GOMEZ   | 08/28/00 |
| R. BORO    | 01/01/07 |

ILLINOIS DEPARTMENT OF TRANSPORTATION  
**DETAILS FOR STEEL PLATE BEAM GUARD RAIL ADJACENT TO CURB AND GUTTER STABILIZATION AT TBT TY 1 SPL.**

SCALE: VERT. NONE  
 HORIZ. NONE  
 PLOT DATE: 1/18/2007  
 DRAWN BY: jls  
 CHECKED BY: