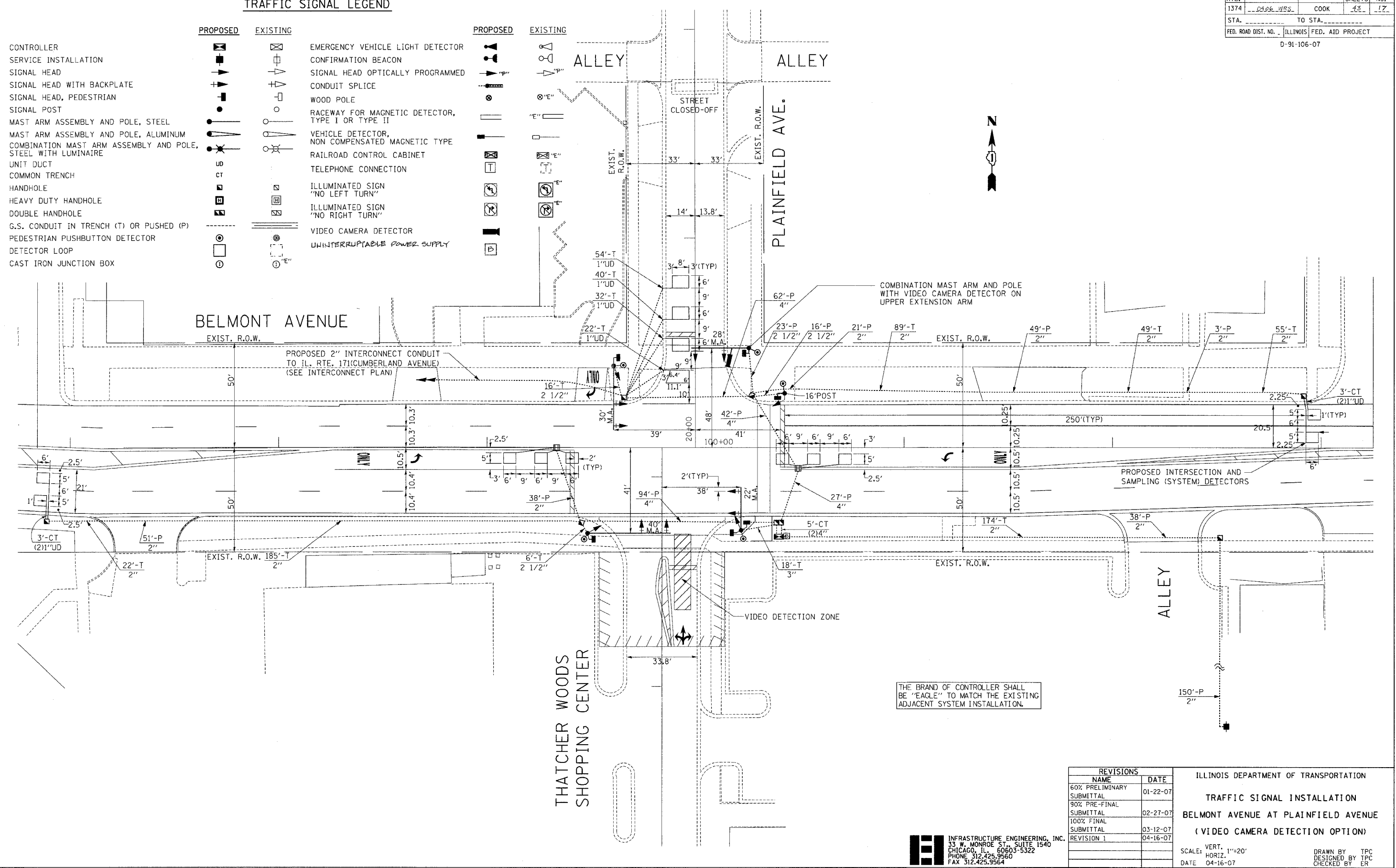


F.A.U. RTE.	SECTION	COUNTY	TOTAL SHEETS	SHEET NO.
1374	0486 WSS	COOK	43	17
STA. _____		TO STA. _____		
FED. ROAD DIST. NO. _____ ILLINOIS FED. AID PROJECT				
D-91-106-07				

TRAFFIC SIGNAL LEGEND

PROPOSED	EXISTING	PROPOSED	EXISTING



PLOT DATE * DATE *
 PLOT SCALE * SCALE *
 USER NAME * USER *

REVISIONS	
NAME	DATE
60% PRELIMINARY SUBMITTAL	01-22-07
90% PRE-FINAL SUBMITTAL	02-27-07
100% FINAL SUBMITTAL	03-12-07
REVISION 1	04-16-07

ILLINOIS DEPARTMENT OF TRANSPORTATION
TRAFFIC SIGNAL INSTALLATION
BELMONT AVENUE AT PLAINFIELD AVENUE
(VIDEO CAMERA DETECTION OPTION)
 SCALE: VERT. 1"=20'
 HORIZ. 1"=40'
 DATE 04-16-07
 DRAWN BY TPC
 DESIGNED BY ER
 CHECKED BY ER

INFRASTRUCTURE ENGINEERING, INC.
 33 W. MONROE ST., SUITE 1540
 CHICAGO, IL 60603-5322
 PHONE 312.425.9560
 FAX 312.425.9564