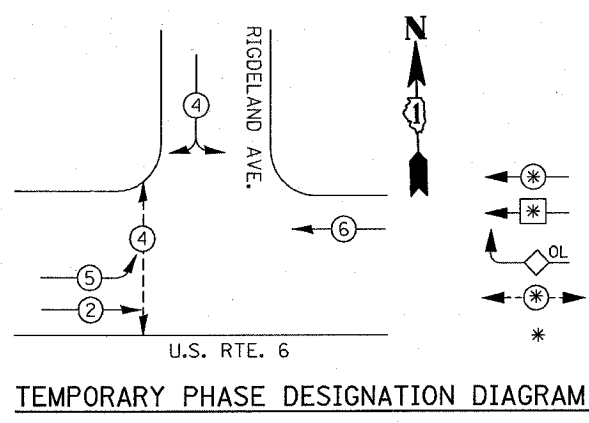


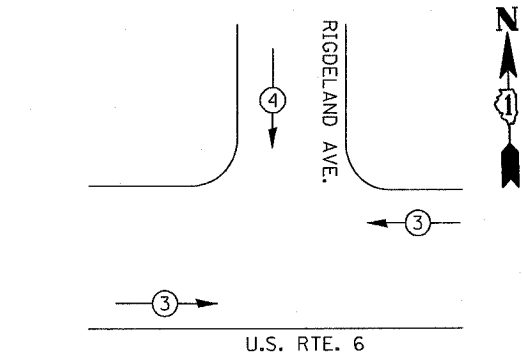
F.A.P. RTE.	SECTION	COUNTY	TOTAL SHEETS	SHEET NO.
351	537 W-TS	COOK	14	8
STA.		TO STA.		
FED. ROAD DIST. NO.	ILLINOIS	FED. AID PROJECT		



LEGEND

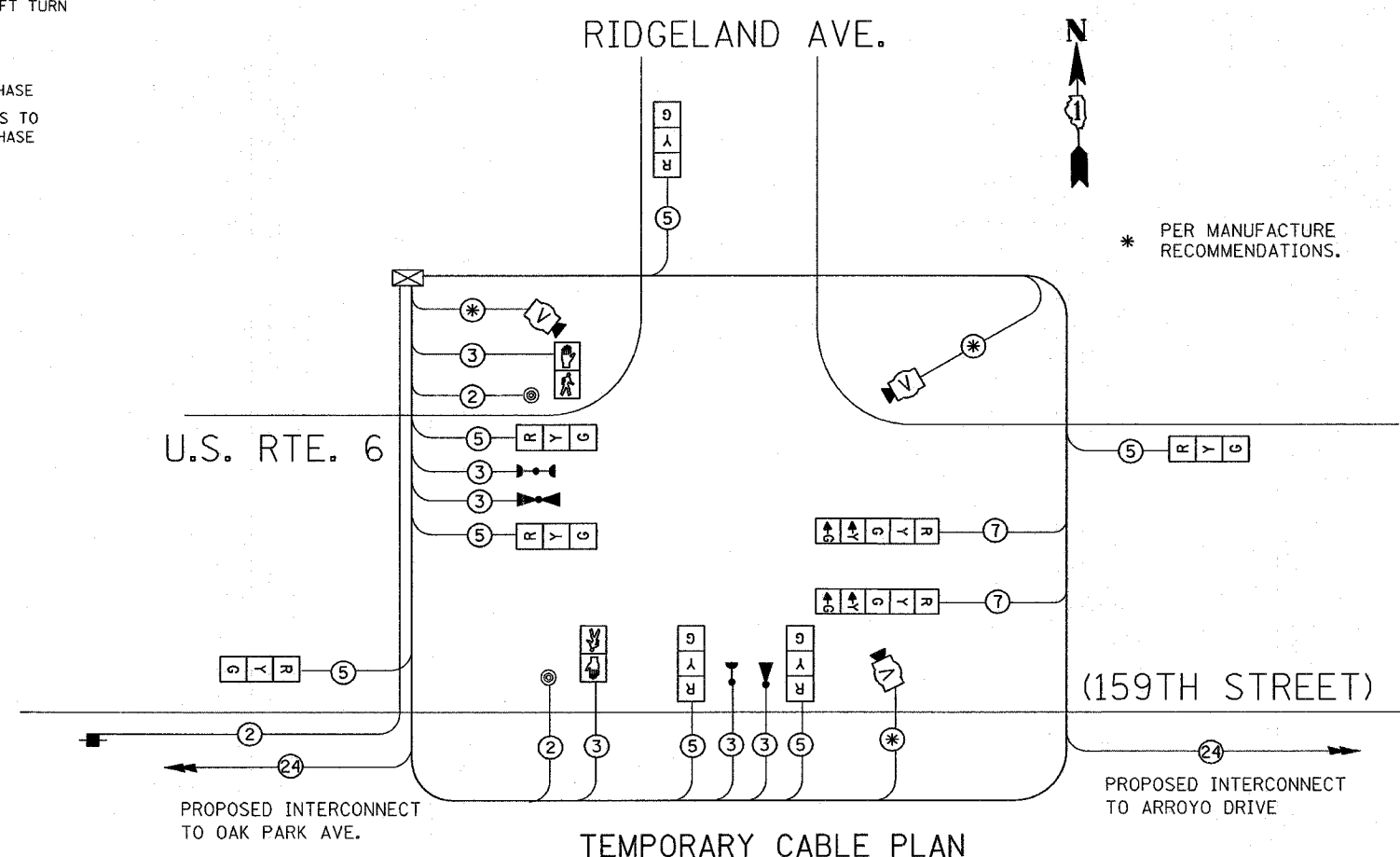
- (*) DUAL ENTRY PHASE
- (*) PROTECTED LEFT TURN PHASE
- OL OVERLAP
- (*) PEDESTRIAN PHASE
- * NUMBER REFERS TO ASSOCIATED PHASE

TEMPORARY PHASE DESIGNATION DIAGRAM



EMERGENCY VEHICLE PREEMPTOR	3	4
MOVEMENT	←	↔

TEMPORARY EMERGENCY VEHICLE PREEMPTION SEQUENCE



TEMPORARY CABLE DIAGRAM LEGEND

- TEMPORARY CONTROLLER CABINET
- TEMPORARY SERVICE INSTALLATION, (P) POLE OR (G) GROUND MOUNT
- TEMPORARY TRAFFIC SIGNAL SECTION OR PEDESTRIAN SIGNAL SECTION, 12" (300 mm)
- 12" (300 MM) PEDESTRIAN SIGNAL SECTION
- INDICATES NUMBER OF CONDUCTORS IN CABLE. ALL CONDUCTORS TO BE NUMBER 14 AWG WIRE UNLESS OTHERWISE NOTED.
- PEDESTRIAN PUSHBUTTON DETECTOR
- VEHICLE DETECTOR, INDUCTION LOOP
- MICROWAVE VEHICLE SENSOR
- EMERGENCY VEHICLE SYSTEM DETECTOR
- CONFIRMATION BEACON

* PER MANUFACTURE RECOMMENDATIONS.

TEMPORARY CABLE PLAN

CONSTRUCTION NOTES:

ALL TRAFFIC SIGNAL SECTIONS SHALL BE 12 INCHES LED WITH EXPANDABLE VIEW TO MEET THE JUNE 2005 ITE REQUIREMENTS.
ALL HOLES SHALL BE COVER PROPERLY AS DIRECTED BY ENGINEER.

SCHEDULE OF QUANTITIES

DESCRIPTION	QTY.	UNIT
TEMPORARY TRAFFIC SIGNAL INSTALLATION	1	EACH

I.D.O.T. TRAFFIC SIGNAL INSTALLATION ELECTRICAL SERVICE REQUIREMENTS					TOTAL WATTAGE
TYPE	NO. LAMPS	WATTAGE INCAND.	LED	%OPERATION	
SIGNAL (RED)	9	135	17	0.50	75.50
(YELLOW)	11	135	25	0.25	68.75
(GREEN)	11	135	15	0.25	41.25
ARROW	4	135	12	0.10	4.8
PED. SIGNAL	2	90	25	1.00	50.00
CONTROLLER	1	100	100	1.00	100.00
ILLUM. SIGN		84		0.05	
FLASHER				0.50	
ENERGY COSTS TO:					TOTAL = 341.3

FOUNDATION (DEPTH)	FT. (m)	CABLE SLACK	FT. (m)	VERTICAL	FT. (m)
TYPE A - POST	4 (1.2)	HANDHOLE	6.5 (2.0)	ALL FOUNDATIONS	3.5 (1.0)
D - CONTROLLER	4 (1.2)	DOUBLE HANDHOLE	13 (4.0)	MAST ARM (L) POLE	20'+L-2= (6m+L-0.6m)=
E - M. ARM POLE		SIGNAL POST	2 (1.0)	BRACKET MOUNTED	13 (4.0)
24" (600mm)	10 (3.0)	CONTROLLER CAB.	1 (0.5)	PED. PUSHBUTTON	4 (1.2)
30" (750mm)	15 (4.6)	FIBER OPTIC	13 (4.0)	ELECTRIC SERVICE	13.5 (4.1)
		ELECTRIC SERVICE	1 (0.5)	SERVICE TO GROUND	13.5 (4.1)
		GROUND CABLE	1 (0.5)	POST MOUNTED	6 (1.8)

THE TRAFFIC SIGNAL CONTROL EQUIPMENT FOR THIS PROJECT SHALL BE "EAGLE" TO MATCH THE EXISTING ADJACENT SYSTEM.

REVISIONS		ILLINOIS DEPARTMENT OF TRANSPORTATION TEMPORARY CABLE PLAN, TEMPORARY EMERGENCY VEHICLE PREEMPTION AND TEMPORARY PHASE DESIGNATION DIAGRAM IL. RTE. 6 AT RIDGELAND AVE.
NAME	DATE	
		SCALE: NONE
		DATE 3/28/2007
		DRAWN BY BCK DESIGNED BY: BCK CHECKED BY DAD

PLOT DATE = 3/28/2007
 PLOT SCALE = 1"=50'
 PLOT NAME = I:\Projects\14171001\unb\rdgland.dgn
 USER NAME = kmhphubgbo