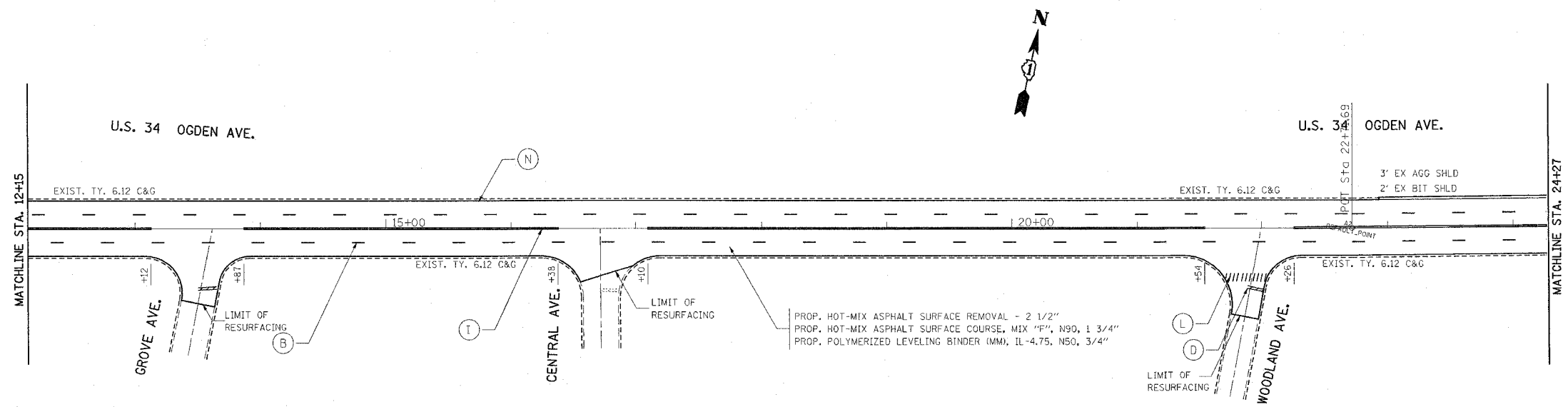
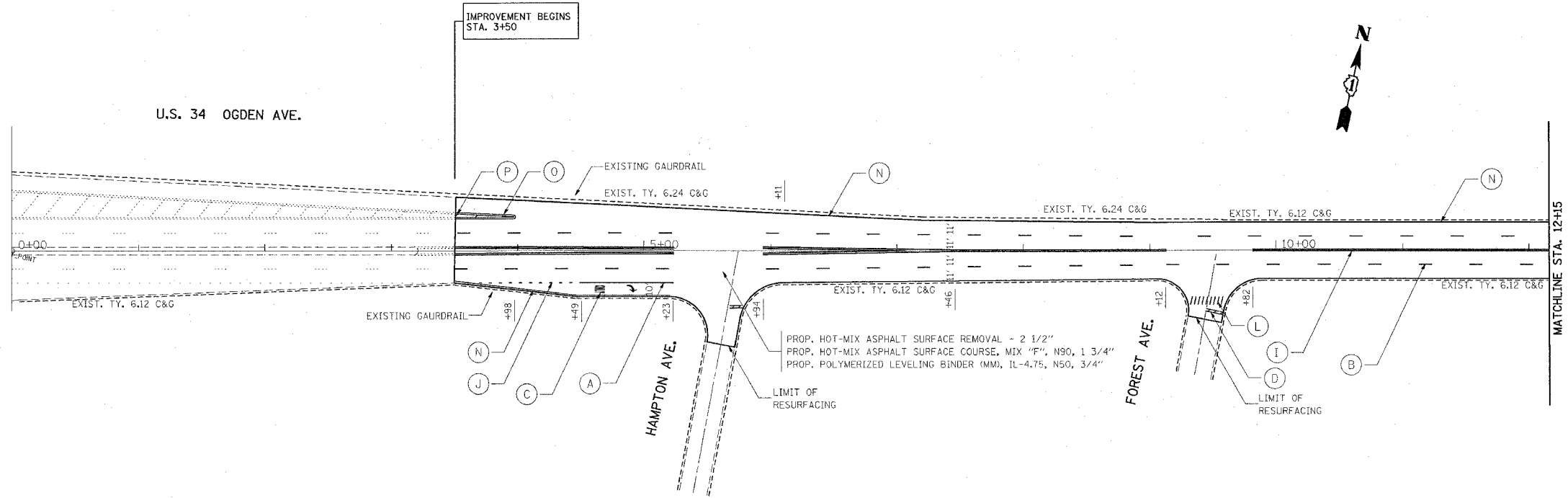


F.A.P. RTE.	SECTION	COUNTY	TOTAL SHEETS	SHEET NO.
311	8 Y-RS-3	COOK	28	11
STA. 0+00		TO STA. 24+27		
FED. ROAD DIST. NO.		ILLINOIS	FED. AID PROJECT	



- (A) 6" WHITE - TURN LANE LINE (TYP.)
- (B) 4" WHITE - SKIP-DASH LINE (TYP.) (10' LINE/30' SPACE)
- (C) 8' WHITE - LETTERS & SYMBOLS (TYP.) (LEFT TURN ONLY, RIGHT TURN ONLY)
- (D) 24" SOLID WHITE - STOP LINES (TYP.)
- (E) 6" WHITE - CROSSWALK LINE (TYP.) (2 @ 6' C-C)
- (F) 12" YELLOW - 45° DIAGONAL (75' C-C OR MINIMUM OF 5)
- (G) 4" YELLOW - MEDIAN EDGE LINE (TYP.)
- (H) 24" TRANSVERSE LINE - RAILROAD CROSSING (TYP.) 6' LETTERS FOR "RR"; 16" LINE FOR "X"
- (I) 4" YELLOW - DOUBLE YELLOW PAINTED MEDIAN (TYP.) (2 @ 11" C-C)
- (J) 6" WHITE - DOTTED LINE (TYP.) (2' LINE/6' SPACE)
- (K) 8" WHITE - SOLID LINE
- (L) 12" WHITE - SCHOOL CROSSWALK (TYP.) (6' LINE/3' C-C SPACE)
- (M) 6" WHITE - DOTTED LINE (TYP.) (3' LINE/12' SPACE)
- (N) 4" WHITE - SOLID EDGE LINE
- (O) 4" WHITE - DOUBLE WHITE PAINTED MEDIAN (TYP.) (2 @ 11" C-C)
- (P) 12" WHITE - 45° DIAGONAL (75' C-C OR MINIMUM OF 5)

REVISIONS	
NAME	DATE

ILLINOIS DEPARTMENT OF TRANSPORTATION

ROADWAY PLAN
U.S. ROUTE 34
(I-294 TO BASSFORD AVE.)

SCALE: VERT. 1"=50'
HORIZ. 1"=50'

DATE 4/11/2007

DRAWN BY
CHECKED BY

PLOT DATE = 4/11/2007
 PLOT NAME = 60C56_11.dwg
 PLOT SCALE = 1/8"=1'-0"
 USER NAME = greshup