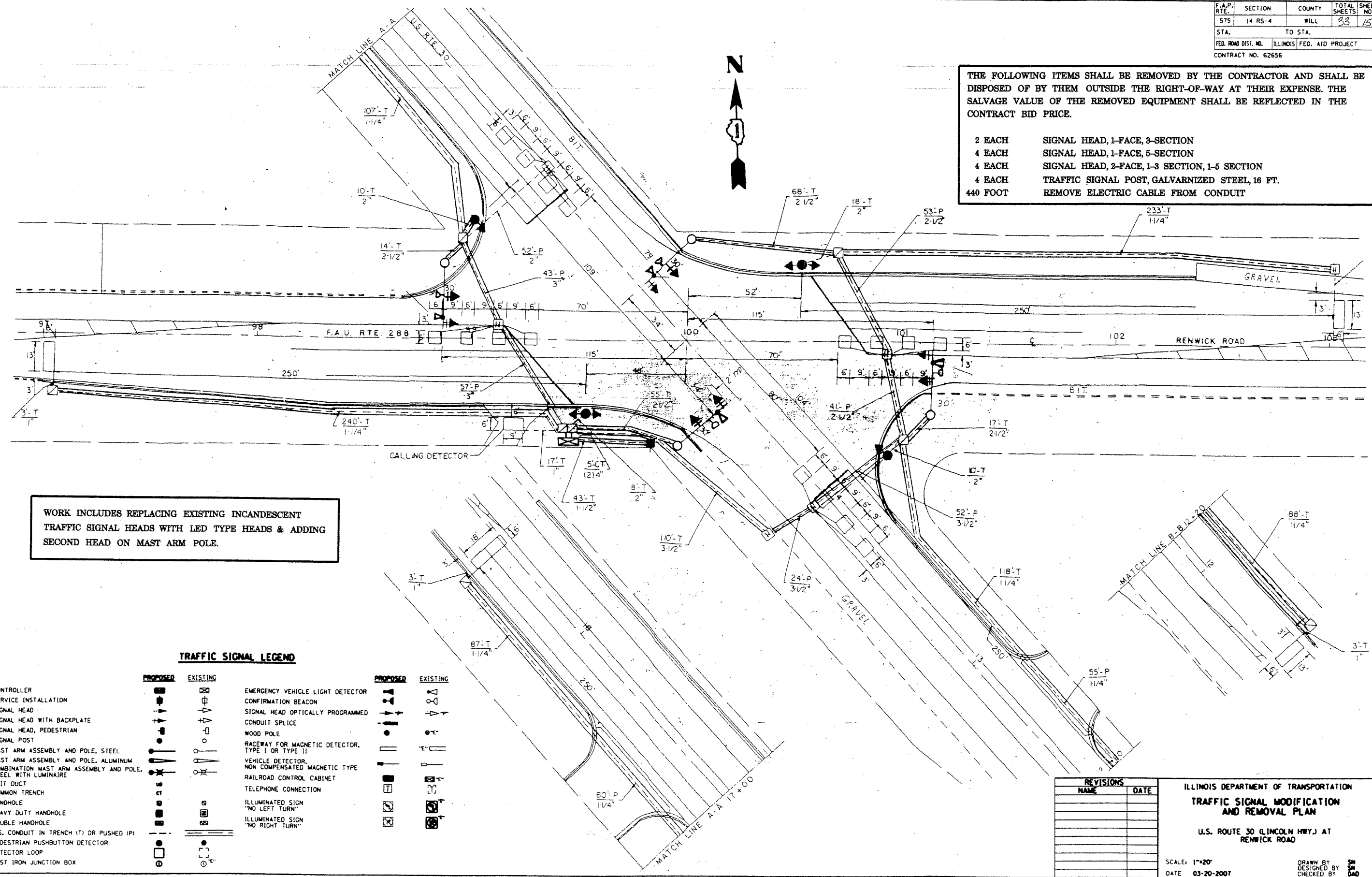


F.A.P. RTE.	SECTION	COUNTY	TOTAL SHEETS	SHEET NO.
575	14 RS-4	WILL	33	15
STA.	TO STA.			
FED. ROAD DIST. NO.	ILLINOIS FED. AID PROJECT			
CONTRACT NO. 62656				

THE FOLLOWING ITEMS SHALL BE REMOVED BY THE CONTRACTOR AND SHALL BE DISPOSED OF BY THEM OUTSIDE THE RIGHT-OF-WAY AT THEIR EXPENSE. THE SALVAGE VALUE OF THE REMOVED EQUIPMENT SHALL BE REFLECTED IN THE CONTRACT BID PRICE.

- 2 EACH SIGNAL HEAD, 1-FACE, 3-SECTION
- 4 EACH SIGNAL HEAD, 1-FACE, 5-SECTION
- 4 EACH SIGNAL HEAD, 2-FACE, 1-3 SECTION, 1-5 SECTION
- 4 EACH TRAFFIC SIGNAL POST, GALVARNIZED STEEL, 16 FT.
- 440 FOOT REMOVE ELECTRIC CABLE FROM CONDUIT



WORK INCLUDES REPLACING EXISTING INCANDESCENT TRAFFIC SIGNAL HEADS WITH LED TYPE HEADS & ADDING SECOND HEAD ON MAST ARM POLE.

TRAFFIC SIGNAL LEGEND

	PROPOSED	EXISTING		PROPOSED	EXISTING
CONTROLLER	[Symbol]	[Symbol]	EMERGENCY VEHICLE LIGHT DETECTOR	[Symbol]	[Symbol]
SERVICE INSTALLATION	[Symbol]	[Symbol]	CONFIRMATION BEACON	[Symbol]	[Symbol]
SIGNAL HEAD	[Symbol]	[Symbol]	SIGNAL HEAD OPTICALLY PROGRAMMED	[Symbol]	[Symbol]
SIGNAL HEAD WITH BACKPLATE	[Symbol]	[Symbol]	CONDUIT SPLICE	[Symbol]	[Symbol]
SIGNAL HEAD, PEDESTRIAN	[Symbol]	[Symbol]	WOOD POLE	[Symbol]	[Symbol]
SIGNAL POST	[Symbol]	[Symbol]	RACEWAY FOR MAGNETIC DETECTOR, TYPE I OR TYPE II	[Symbol]	[Symbol]
MAST ARM ASSEMBLY AND POLE, STEEL	[Symbol]	[Symbol]	VEHICLE DETECTOR, NON COMPENSATED MAGNETIC TYPE	[Symbol]	[Symbol]
MAST ARM ASSEMBLY AND POLE, ALUMINUM	[Symbol]	[Symbol]	RAILROAD CONTROL CABINET	[Symbol]	[Symbol]
COMBINATION MAST ARM ASSEMBLY AND POLE, STEEL WITH LUMINAIRE	[Symbol]	[Symbol]	TELEPHONE CONNECTION	[Symbol]	[Symbol]
UNIT DUCT	[Symbol]	[Symbol]	ILLUMINATED SIGN "NO LEFT TURN"	[Symbol]	[Symbol]
COMMON TRENCH	[Symbol]	[Symbol]	ILLUMINATED SIGN "NO RIGHT TURN"	[Symbol]	[Symbol]
HANDHOLE	[Symbol]	[Symbol]			
HEAVY DUTY HANDHOLE	[Symbol]	[Symbol]			
DOUBLE HANDHOLE	[Symbol]	[Symbol]			
G.S. CONDUIT IN TRENCH (T) OR PUSHED (P)	[Symbol]	[Symbol]			
PEDESTRIAN PUSHBUTTON DETECTOR	[Symbol]	[Symbol]			
DETECTOR LOOP	[Symbol]	[Symbol]			
CAST IRON JUNCTION BOX	[Symbol]	[Symbol]			

REVISIONS	
NAME	DATE

ILLINOIS DEPARTMENT OF TRANSPORTATION
TRAFFIC SIGNAL MODIFICATION AND REMOVAL PLAN
 U.S. ROUTE 30 (LINCOLN HWY.) AT RENWICK ROAD
 SCALE: 1"=20'
 DATE: 03-20-2007
 DRAWN BY: SM
 DESIGNED BY: SM
 CHECKED BY: DAO