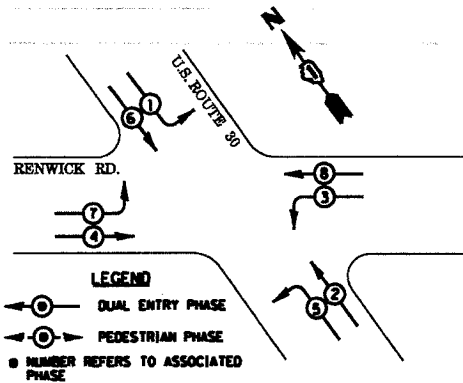


F.A.P. SHEETS	SECTION	COUNTY	TOTAL SHEETS	SHEET NO.
575	14 RS-4	WILL	33	16
STA.	TO STA.			
FED. ROAD DIST. NO.	ILLINOIS	FED. AID PROJECT		
CONTRACT NO. 62656				

**CONTROLLER SEQUENCE**

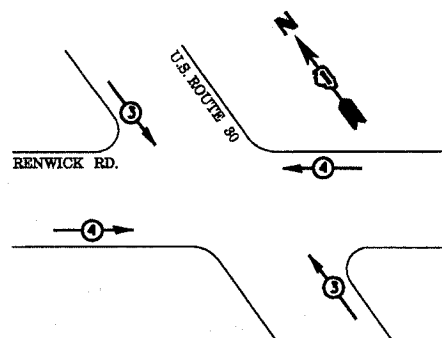


**PHASE DESIGNATION DIAGRAM**

DUAL ENTRY - ALL LEGS  
PROTECTED/PERMITTED LEFT TURN PHASING

**EMERGENCY VEHICLE PREEMPTION SEQUENCE**

FOR DUAL ENTRY OPERATION - ALL LEGS



PROPOSED PRIORITY LANES		
EMERGENCY VEHICLE PREEMPTOR	3	4
MOVEMENT		

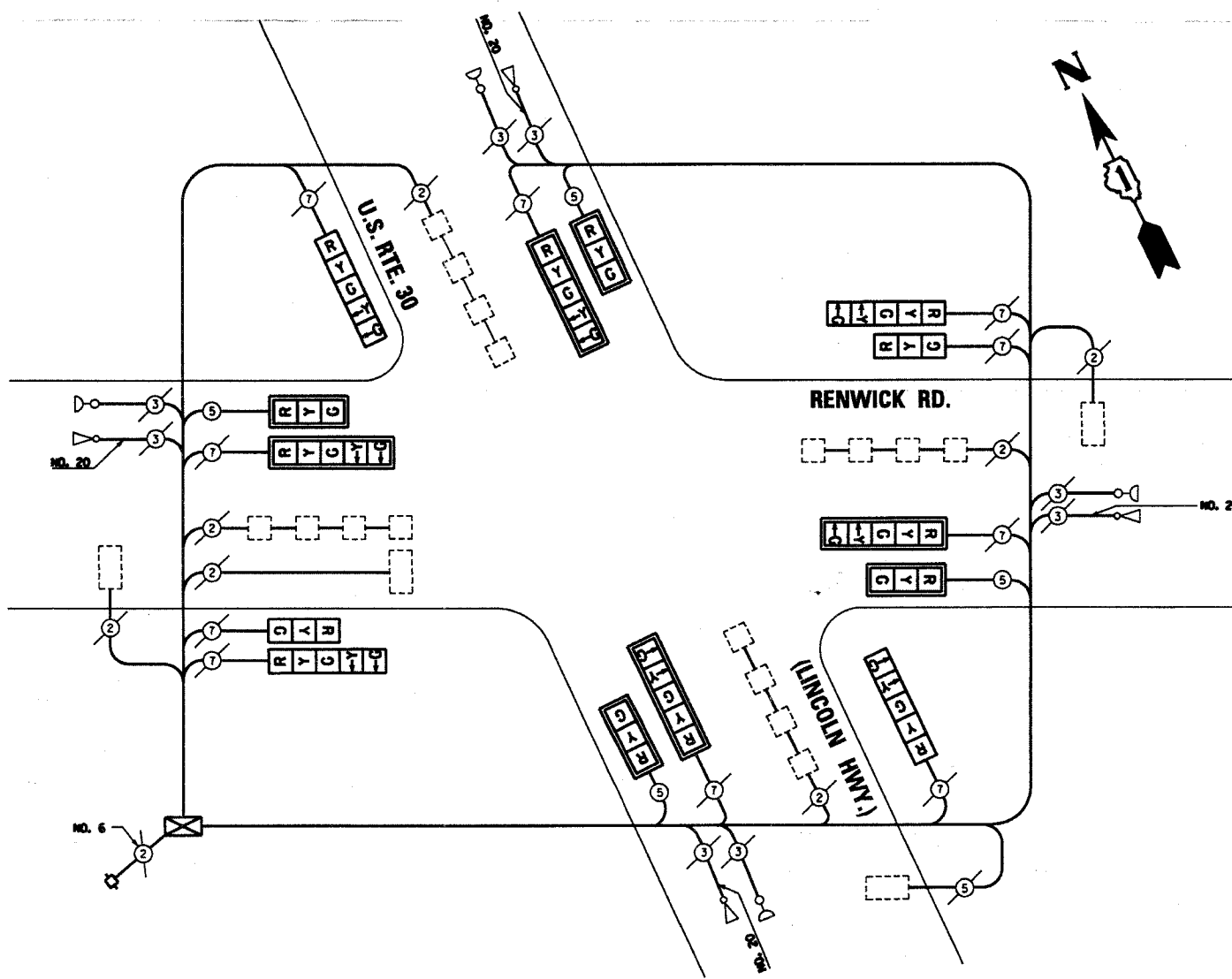
L.O.O.T. TRAFFIC SIGNAL INSTALLATION ELECTRICAL SERVICE REQUIREMENTS					TOTAL WATTAGE
TYPE	NO. LAMPS	WATTAGE (INCAND.)	WATTAGE (LED)	% OPERATION	
SIGNAL (RED)	14	135	17	0.50	119.0
(YELLOW)	14	135	25	0.25	87.5
(GREEN)	14	135	15	0.25	52.5
ARROW	16	135	12	0.10	19.2
PED. SIGNAL	-	90	25	1.00	-
CONTROLLER	1	100	100	1.00	100.0
ILLUM. SIGN	-	84	-	0.05	-
FLASHER	-	-	-	0.50	-
<b>TOTAL :</b>					<b>408.2</b>

ENERGY COSTS - BILLED TO: ADDRESS: \_\_\_\_\_  
ENERGY SUPPLY - CONTACT: PHONE: \_\_\_\_\_ COMPANY: \_\_\_\_\_

THE FOLLOWING ITEMS SHALL BE REMOVED BY THE CONTRACTOR AND SHALL BE DISPOSED OF BY THEM OUTSIDE THE RIGHT-OF-WAY AT THEIR EXPENSE. THE SALVAGE VALUE OF THE REMOVED EQUIPMENT SHALL BE REFLECTED IN THE CONTRACT BID PRICE.

- 2 EACH SIGNAL HEAD, 1-FACE, 3-SECTION
- 4 EACH SIGNAL HEAD, 1-FACE, 5-SECTION
- 4 EACH SIGNAL HEAD, 2-FACE, 1-3 SECTION, 1-5 SECTION
- 4 EACH TRAFFIC SIGNAL POST, GALVANIZED STEEL, 16 FT.

FOUNDATION (DEPTH)	FT. (S)	CABLE SLACK	FT. (S)	VERTICAL	FT. (S)
TYPE A - POST	4 (1.2)	HANDHOLE	6.5 (2.0)	ALL FOUNDATIONS	3.5 (1.0)
D - CONTROLLER	4 (1.2)	DOUBLE HANDHOLE	13 (4.0)	MAST ARM (L) POLE	20' ± L - 2' (6m ± - 0.6m)
E - M. ARM POLE	-	SIGNAL POST	2 (1.0)	BRACKET MOUNTED	13 (4.0)
24" (600mm)	10 (3.0)	CONTROLLER CAB.	1 (0.3)	PED. PUSHBUTTON	4 (1.2)
30" (750mm)	15 (4.5)	FIBER OPTIC	13 (4.0)	ELECTRIC SERVICE	13.5 (4.1)
		ELECTRIC SERVICE	1 (0.3)	SERVICE TO GROUND	13.5 (4.1)
		GROUND CABLE	1 (0.3)	POST MOUNTED	6 (1.8)



**CABLE PLAN**

**CABLE PLAN LEGEND**

- EXISTING: 8" (200mm) TRAFFIC SIGNAL SECTION
- PROPOSED: 12" (300mm) TRAFFIC SIGNAL SECTION
- 12" (300mm) PEDESTRIAN SIGNAL SECTION
- 12" (300mm) PEDESTRIAN SIGNAL SECTION
- CONTROLLER CABINET
- SERVICE INSTALLATION
- TELEPHONE CONNECTION
- VEHICLE DETECTOR, INDUCTION LOOP
- MAGNETIC DETECTOR
- EMERGENCY VEHICLE LIGHT DETECTOR
- CONFIRMATION BEACON
- PUSHBUTTON DETECTOR
- 2 DENOTES NUMBER OF CONDUCTORS. ALL CABLE NO. 14 EXCEPT AS INDICATED. ALL LOOP DETECTOR CABLE TO BE SHIELDED.
- 1 GROUND CABLE IN CONDUIT NO. 6 SOLID COPPER (GREEN)
- 2 FIBER OPTIC CABLE IN CONDUIT NO. 62.5/125 MM12F SM12F
- SIGNAL FACE WITH BACKPLATE. "P" INDICATES PROGRAMMED HEAD
- RAILROAD CONTROL CABINET
- ILLUMINATED SIGN "NO LEFT TURN"
- ILLUMINATED SIGN "NO RIGHT TURN"
- GROUND ROD AT HANDHOLE (H), DOUBLE HANDHOLE (H), OR CONTROLLER (C)
- GROUND ROD AT POST (P), OR MAST ARM POLE (MA)
- GROUND ROD AT ELECTRIC SERVICE INSTALLATION

**SCHEDULE OF QUANTITIES**

ITEM	UNIT	QUANTITY
MAINTENANCE OF EXISTING TRAFFIC SIGNAL INSTALLATION	EACH	1
ELECTRIC CABLE IN CONDUIT, SIGNAL, NO. 14 5C	FOOT	1095
TRAFFIC SIGNAL POST, GALVANIZED STEEL, 16 FT.	EACH	4
SIGNAL HEAD, LED, 1-FACE, 3-SECTION, MAST ARM MOUNTED	EACH	4
SIGNAL HEAD, LED, 1-FACE, 5-SECTION, MAST ARM MOUNTED	EACH	4
SIGNAL HEAD, LED, 1-FACE, 5 SECTION, BRACKET MOUNTED	EACH	2
SIGNAL HEAD, LED, 2-FACE, 1-3 SECTION, 1-5 SECTION, BRACKET MOUNTED	EACH	2
TRAFFIC SIGNAL BACKPLATE, LOUVERED, ALUMINUM	EACH	8
REMOVE EXISTING TRAFFIC SIGNAL EQUIPMENT	EACH	1
REMOVE ELECTRIC CABLE FROM CONDUIT	FOOT	440

REVISIONS	
NAME	DATE

ILLINOIS DEPARTMENT OF TRANSPORTATION  
**CABLE PLAN, PHASE DESIGNATION DIAGRAM, EMERGENCY VEHICLE PREEMPTION SEQUENCE AND SCHEDULE OF QUANTITIES**  
U.S. ROUTE 30 (LINCOLN HWY.) AT RENWICK ROAD  
SCALE: N.T.S.  
DATE: 03-20-2007  
DRAWN BY: SN  
CHECKED BY: SN  
DAD