

F.A.P. RTE.	SECTION	COUNTY	TOTAL SHEETS	SHEET NO.
326	106-N-1	KANE	82	1
			+1	
			83	

STATE OF ILLINOIS
DEPARTMENT OF TRANSPORTATION
DIVISION OF HIGHWAYS

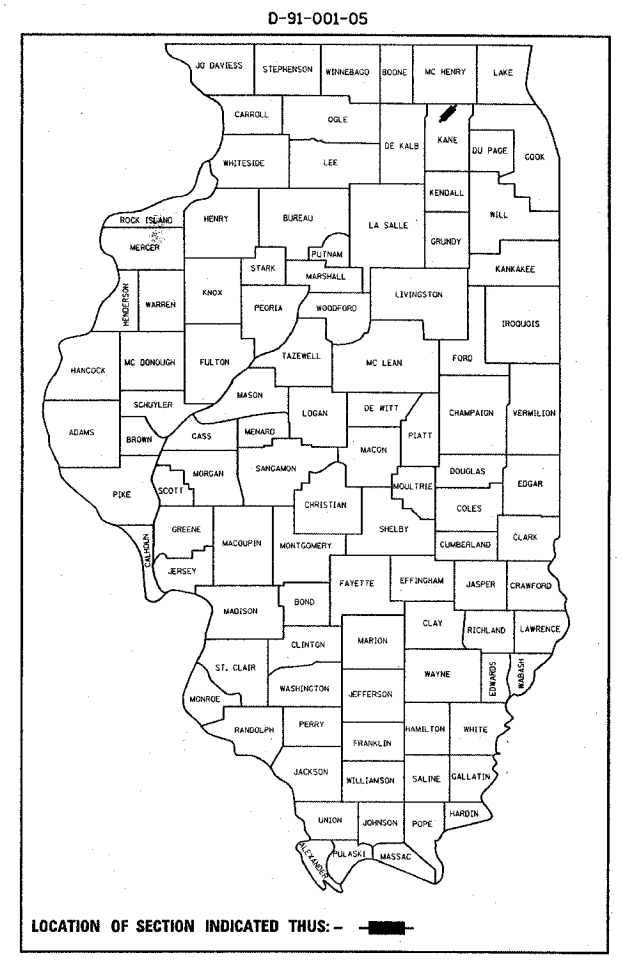
PROPOSED HIGHWAY PLANS

FAP ROUTE 326: IL 47
AT BIG TIMBER ROAD
SECTION: 106-N-1

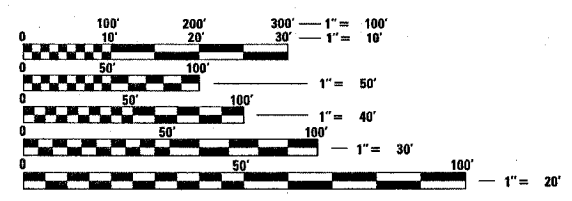
CHANNELIZATION, TRAFFIC SIGNAL INSTALLATION
PROJECT: HSIP-0326(065)
KANE COUNTY
C-91-001-05

FOR INDEX OF SHEETS, SEE SHEET NO. 2

PROJECT LOCATED IN UNINCORPORATED,
KANE COUNTY.



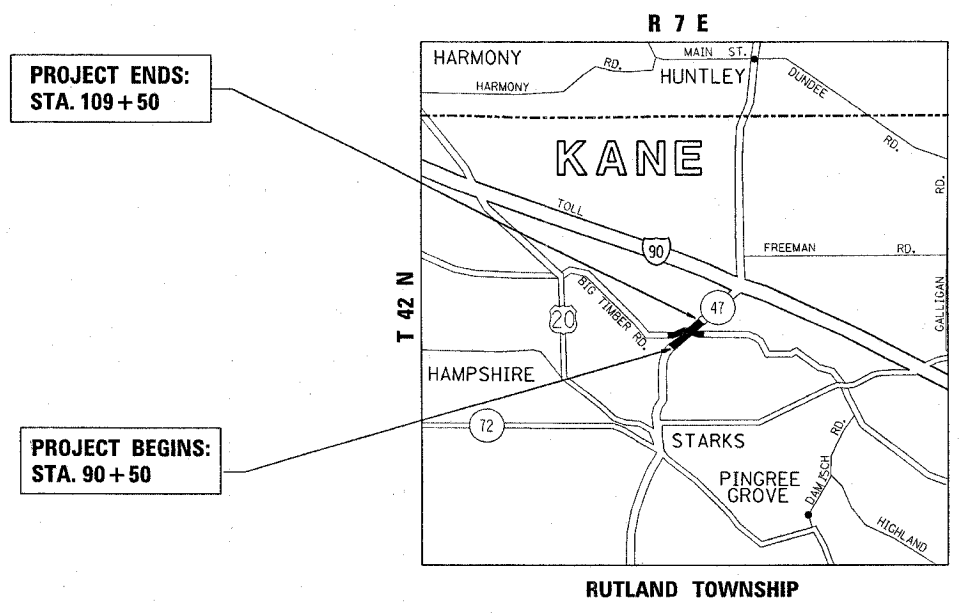
REGION ONE - PLAN PREPARATION ENGINEER - KEN ENG / J. CHANG (847) 705-4432



FULL SIZE PLANS HAVE BEEN PREPARED USING STANDARD ENGINEERING SCALES. REDUCED SIZED PLANS WILL NOT CONFORM TO STANDARD SCALES. IN MAKING MEASUREMENTS ON REDUCED PLANS, THE ABOVE SCALES MAY BE USED.

J.U.L.I.E.
JOINT UTILITY LOCATION INFORMATION FOR EXCAVATION
1-800-892-0123

CONTRACT NO. 62843



PROJECT ENDS:
STA. 109 + 50

PROJECT BEGINS:
STA. 90 + 50



TRAFFIC DATA

IL 47: 2005 ADT = 10,800
BIG TIMBER RD: 2002 ADT = 3,350
POSTED SPEED LIMIT = 55 MPH

GROSS AND NET LENGTH OF PROJECT = 1900 FT. (0.36 MILE)

STATE OF ILLINOIS
DEPARTMENT OF TRANSPORTATION
DIVISION OF HIGHWAYS

SUBMITTED Feb 9 2007

[Signature]
DEPUTY DIRECTOR OF HIGHWAYS, REGION ENGINEER

May 11 2007
Eric E. Horn
ENGINEER OF DESIGN AND ENVIRONMENT

May 11 2007
Milton R. See P.E.
DIRECTOR OF HIGHWAYS, CHIEF ENGINEER

PRINTED BY THE AUTHORITY
OF THE STATE OF ILLINOIS