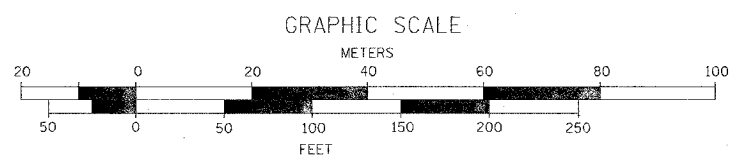
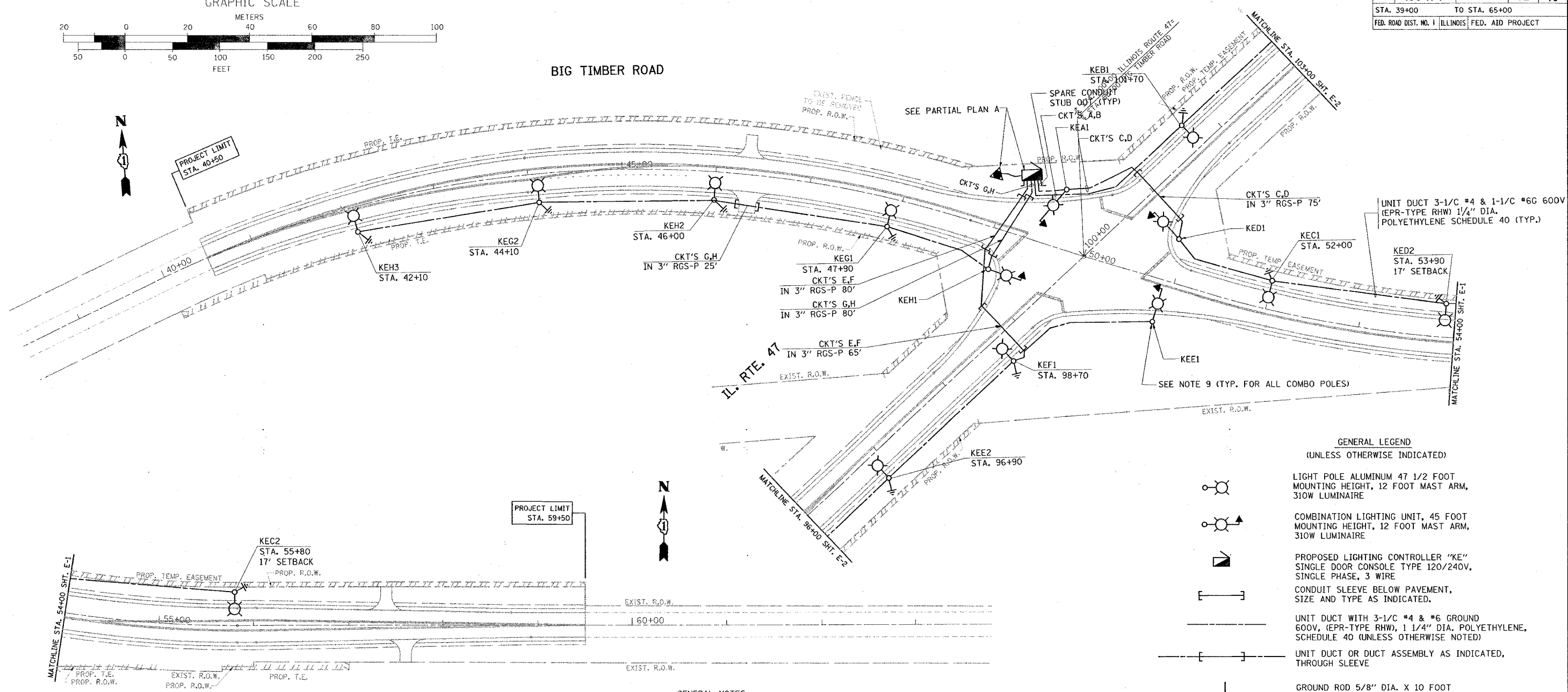


F.A.P. RTE.	SECTION	COUNTY	TOTAL SHEETS	SHEET NO.
326	106-N-1	KANE	82	46
STA. 39+00		TO STA. 65+00		
FED. ROAD DIST. NO. 1 ILLINOIS FED. AID PROJECT				



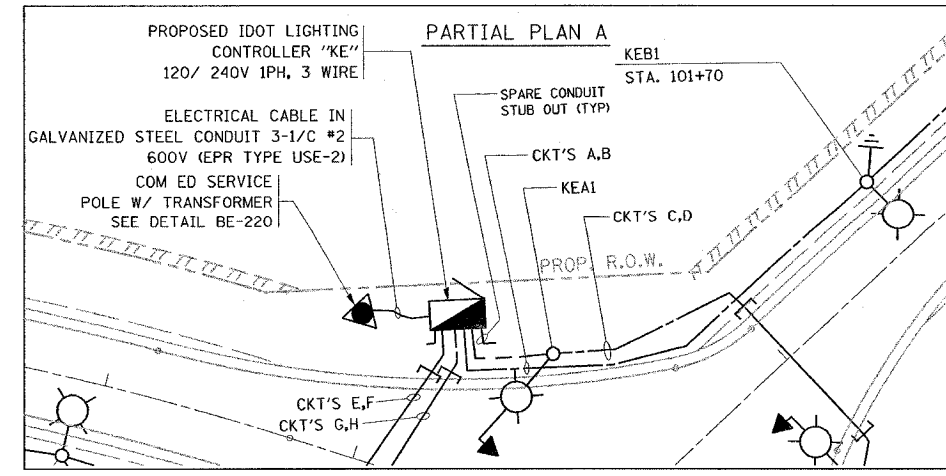
BIG TIMBER ROAD



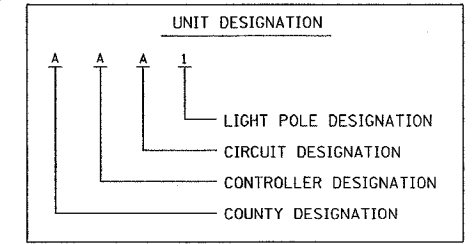
- GENERAL LEGEND**  
(UNLESS OTHERWISE INDICATED)
- LIGHT POLE ALUMINUM 47 1/2 FOOT MOUNTING HEIGHT, 12 FOOT MAST ARM, 310W LUMINAIRE
  - COMBINATION LIGHTING UNIT, 45 FOOT MOUNTING HEIGHT, 12 FOOT MAST ARM, 310W LUMINAIRE
  - PROPOSED LIGHTING CONTROLLER "KE" SINGLE DOOR CONSOLE TYPE 120/240V, SINGLE PHASE, 3 WIRE
  - CONDUIT SLEEVE BELOW PAVEMENT, SIZE AND TYPE AS INDICATED.
  - UNIT DUCT WITH 3-1/C #4 & #6 GROUND 600V, (EPR-TYPE RHW), 1 1/4" DIA. POLYETHYLENE, SCHEDULE 40 (UNLESS OTHERWISE NOTED)
  - UNIT DUCT OR DUCT ASSEMBLY AS INDICATED, THROUGH SLEEVE
  - GROUND ROD 5/8" DIA. X 10 FOOT

**GENERAL NOTES:**

1. ALL WORK SHALL CONFORM TO THE LATEST NATIONAL ELECTRIC CODE (NEC), IES AND IDOT STANDARDS.
2. CONTRACTOR SHALL VERIFY LOCATIONS OF ALL UNDERGROUND UTILITIES BEFORE TRENCHING AND AUGURING.
3. ALL LIGHT POLES SHALL HAVE A MINIMUM SETBACK OF 12 FEET FROM EDGE OF TRAVELED PAVEMENT (UNLESS OTHERWISE NOTED). SEE TRAFFIC PLANS FOR EXACT LOCATION OF THE COMBINATION POLES.
4. SERVICE VOLTAGE IS 120/240V, 1PH, 3W, LUMINAIRE BALLAST SHOULD BE CONNECTED AT 120V. ALL LUMINAIRES SHALL HAVE A MULTI-TAP BALLAST.
5. ALL LUMINAIRES SHALL HAVE A LUMINAIRE KEEPER INSTALLED (SEE DETAIL).
6. THE CONTRACTOR SHALL STAKE THE PROPOSED LOCATION OF THE LIGHT POLES AND HAVE THE LOCATIONS APPROVED BY THE ENGINEER BEFORE CONSTRUCTING THE LIGHT POLE FOUNDATIONS.
7. RGS-P RIGID GALVANIZED STEEL CONDUIT PUSHED.
8. THE UNIT DUCT RUNS SHALL HAVE A MINIMUM 5-FOOT SPACING FROM EDGE OF TRAVELED PAVEMENT.
9. FOR EXACT LOCATION OF COMBINATION POLES SEE TRAFFIC SIGNAL PLANS. COMBINATION POLE AND LIGHTING MAST ARMS ARE PART OF TRAFFIC PAY ITEMS.



N.T.S.



REVISIONS	
NAME	DATE

ILLINOIS DEPARTMENT OF TRANSPORTATION  
**IL. RTE. 47 AT BIG TIMBER RD  
 PROPOSED LIGHTING PLAN I**

SCALE: VERT. AS SHOWN  
 HORIZ. AS SHOWN  
 DATE 2/9/2007

DRAWN BY AC  
 CHECKED BY MJ/MEA

PLOT DATE = 2/9/2007  
 FILE NAME = c:\p\projects\1060603\1060603.dgn  
 USER NAME = spg10603