

F.A.I. RITE	SECTION	COUNTY	TOTAL SHEETS	SHEET NO.
55	99 (1&2) WRS	WILL	334	1
			+11	
			345	

STATE OF ILLINOIS
DEPARTMENT OF TRANSPORTATION
DIVISION OF HIGHWAYS

**PROPOSED
HIGHWAY PLANS**

F.A.I. ROUTE 55 (INTERSTATE 55)
WIDENING AND RESURFACING
FROM F.A.I. ROUTE 80 TO BLACK ROAD

SECTION: 99 (1&2) WRS
~~PROJECT NO.: IM-055-6(228)250~~

WILL COUNTY
C-91-093-05



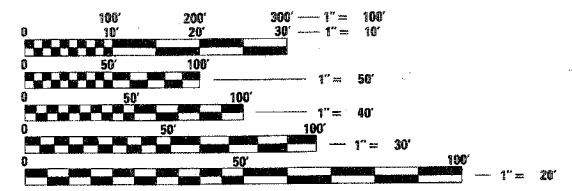
FOR INDEX OF SHEETS, SEE SHEET NO. 2

TRAFFIC DATA

ADT (2030):
US 6 to I-80 = 64,000
I-80 to IL 59 = 83,000
IL 59 to U.S. 52 = 56,000
U.S. 52 to U.S. 30 = 60,000
POSTED SPEED : 65 mph

MICROFILMED _____
REEL NUMBER _____
AWARDED _____
RESIDENT ENGINEER _____
AS BUILT CHANGES WERE MADE
ON THE FOLLOWING SHEETS _____

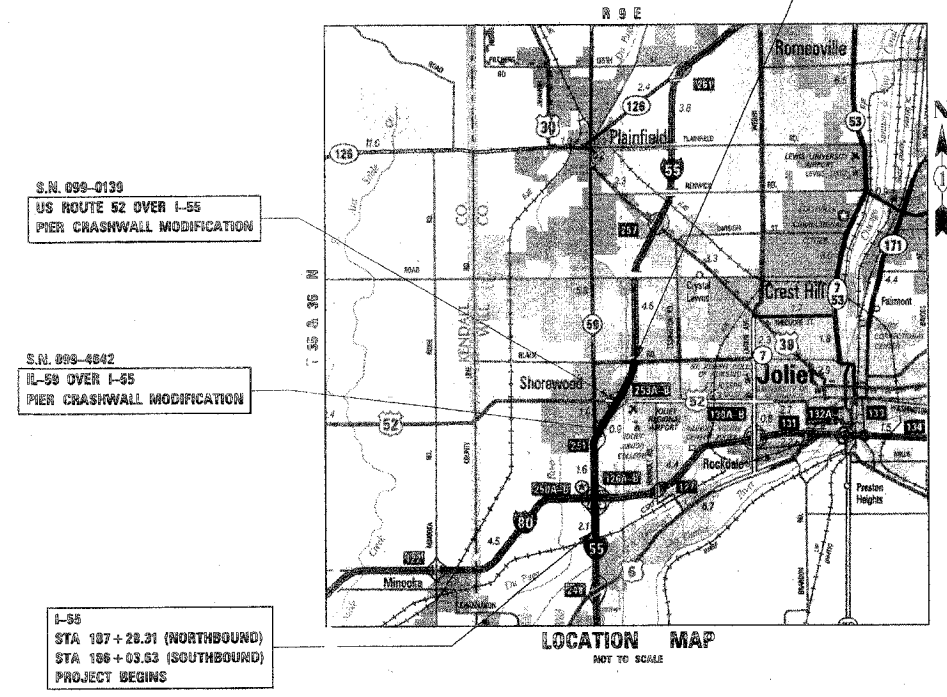
DISTRICT 1 - DESIGN /CONSULTANT SERVICES
PROJECT MANAGER: RAJENDRA SHAH 847-705-4555



FULL SIZE PLANS HAVE BEEN PREPARED USING STANDARD ENGINEERING SCALES. REDUCED SIZED PLANS WILL NOT CONFORM TO STANDARD SCALES. IN MAKING MEASUREMENTS ON REDUCED PLANS, THE ABOVE SCALES MAY BE USED.

J.U.L.I.E.
JOINT UTILITY LOCATION INFORMATION FOR EXCAVATION
1-800-892-0123

CONTRACT NO. 62895



I-55 GROSS LENGTH OF PROJECT = 21,601.44 feet (4.103 miles)
I-55 NET LENGTH OF PROJECT = 21,601.44 feet (4.103 miles)



DOUGLAS D. HANSEN, P.E.
IL. REG. NO. 062-045293
EXPIRES: 11/30/2007
DATE: 2/8/2007

TENG
TENG & ASSOCIATES, INC.
ENGINEERS/ARCHITECTS/PLANNERS
205 N. MICHIGAN AVE. CHICAGO, IL 60601

STATE OF ILLINOIS
DEPARTMENT OF TRANSPORTATION
DIVISION OF HIGHWAYS

SUBMITTED February 14, 2007

Diane O'Keefe
DEPUTY DIRECTOR OF HIGHWAYS, REGION ENGINEER

May 11, 2007
Eric E. Harbo
INTER-ENGINEER OF DESIGN AND ENVIRONMENT

May 11, 2007
Milton R. See, P.E.
DIRECTOR OF HIGHWAYS, CHIEF ENGINEER

PRINTED BY THE AUTHORITY
OF THE STATE OF ILLINOIS