

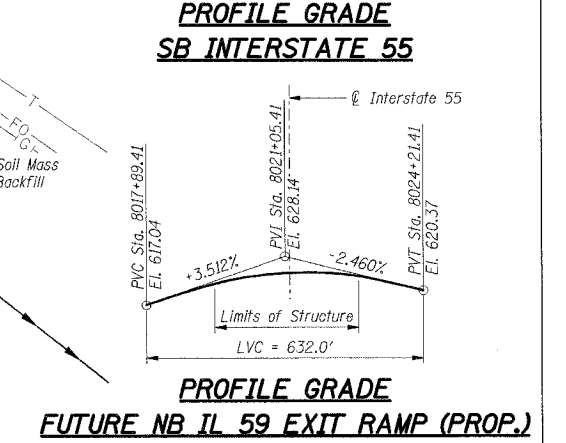
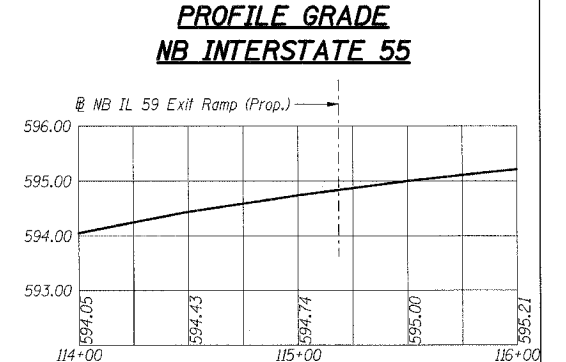
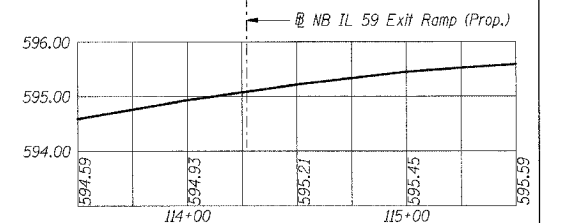
F.A.I. RTE.	SECTION	COUNTY	TOTAL SHEETS	SHEET NO.
55	99 (I&2) WRS	WILL	334	257
STA.	TO STA.			
FED. ROAD DIST. NO.	ILLINOIS	FED. AID PROJECT		

DESIGN SPECIFICATIONS:
1996 AASHTO Standard Specifications for Highway Bridges
1997 thru 2002 Interim Specifications.

DESIGN LOADING:
Roadway Live Load: HS 20-44
Future Wearing Surface = 50 psi

DESIGN STRESSES:
Concrete, f'c = 3,500 psi
Reinforcement, fy = 60,000 psi
Structural Steel, fy = 50,000 psi (M 270 Grade 50)

SEISMIC DATA:
Seismic Performance Category (SPC) = A
Bedrock Acceleration Coefficient (A) = 0.04g
Site Coefficient (S) = 1.0



BENCHMARK:
TBM#1 Top of a large nail set in the east face of power pole on west side of West Frontage Rd. near Interstate 55 Sta. 115+00. El. 595.91 (NGVD 29 Vertical Datum)

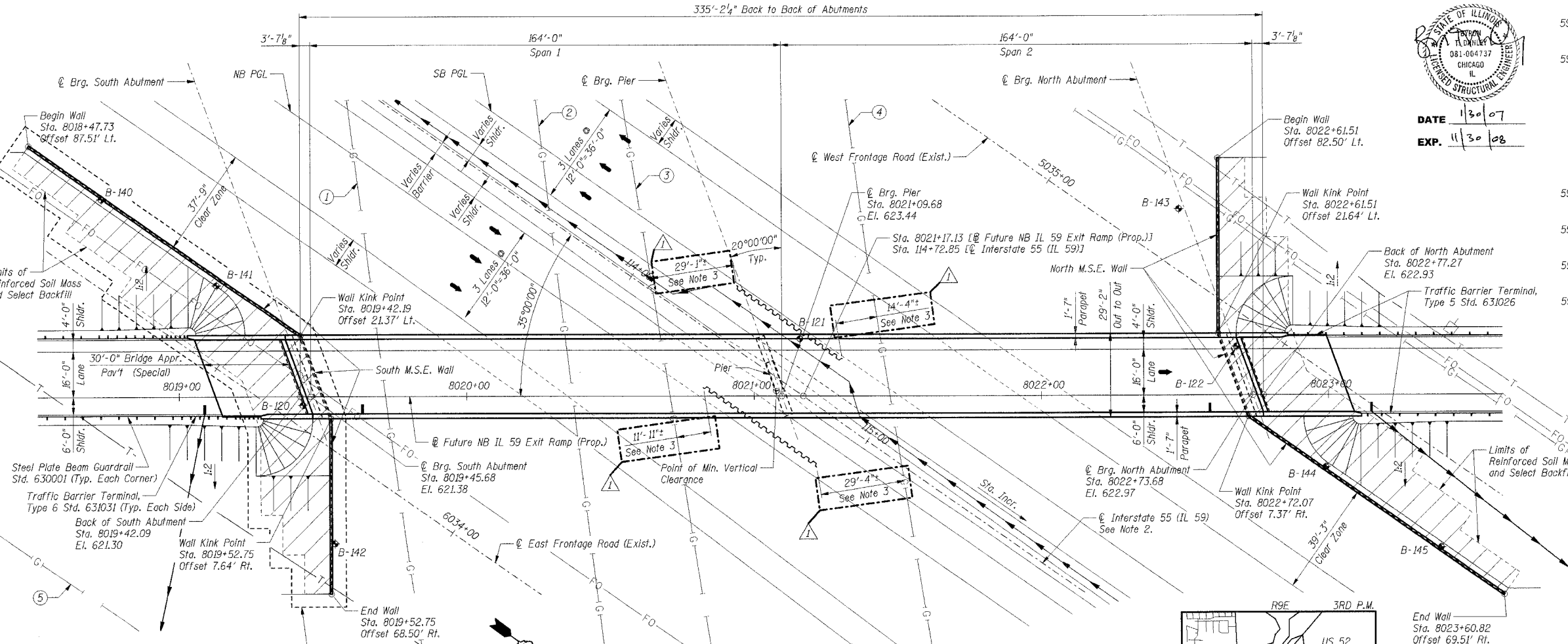
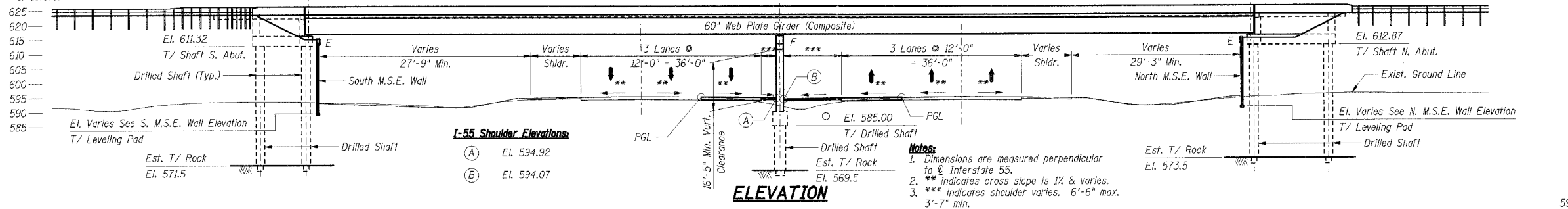
SALVAGE:
None.

STAGING:
Traffic will be maintained on existing NB IL 59 Exit Ramp Bridge (S.N. 099-0030).

EXISTING STRUCTURE:
S.N. 099-0030 Four span, 269'-8" back to back of abutments, continuous steel multi-beam bridge on multi-column concrete piers and open abutments. 26' between barriers. Existing structure is approximately 2500' north of proposed structure.

ELEVATIONS SHOWN ON SHEETS 257 THRU 262 ARE BASED ON NGVD 29 VERTICAL DATUM, WHILE ALL OTHER CONTRACT 62895 ELEVATIONS ARE BASED ON NAVD 88 VERTICAL DATUM. ELEVATIONS SHOWN ON SHEETS 257 THRU 262 MUST BE CONVERTED TO NAVD 88 VERTICAL DATUM BY SUBTRACTING 0.31 FEET FROM ELEVATIONS DENOTED.

FOR EXAMPLE:
ON SHT. 257 [E BRG. PIER, STA. 8021+09.68, EL. 623.44 (NGVD 29)]
CONVERT: EL. 623.44 (NGVD 29)
- 0.31
EL. 623.13 (NAVD 88)
USE EL. 623.13



KINDER MORGAN GAS PIPELINES
(See Note 3)

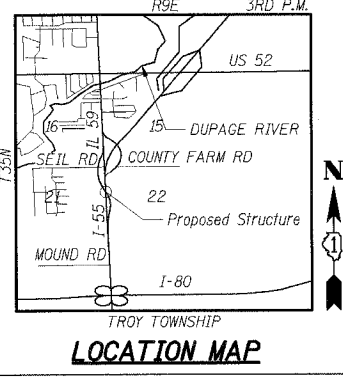
ID	DESIGNATION	DIAMETER
①	GC #1	30"
②	AM #4	36" w/ 42" casing under roadway
③	AM #2	24"
④	GC #3	36"
⑤	GC #2	36"

Notes:

- Center pier shall be constructed under this contract. Abutments, superstructure, approach embankments, bridge approach pavements and guardrails will be constructed by others under a separate future contract.
- Center pier shall be constructed based on alignment defined as @ Future NB IL 59 Exit Ramp (Prop.). For alignment sketch and control points, see Sht. 2 of 6.
- Kinder Morgan gas pipeline locations indicated are based on SUE investigation of underground utilities data shown on Sheet 203.

LEGEND

- B-0 Soil Boring Location
- T- Telephone Line
- G- Gas Line
- FO- Fiber Optic Line
- E- Electrical Pole
- S- Storm Sewer
- I- Drainage Scupper or Inlet
- R- Temporary Soil Retention System



DATE 11/30/07
EXP. 11/30/08

REVISIONS

NAME	DATE
MDB	05/22/07

ILLINOIS DEPARTMENT OF TRANSPORTATION
FAT ROUTE 55 (I-80 TO BLACK ROAD)
WIDENING AND RESURFACING
IL ROUTE 59 OVER I-55, S.N. 099-4642
STA. 8021+17.13, SECTION 26HB-1BR & 114R-1
WILL COUNTY

GENERAL PLAN & ELEVATION

SCALE: DATE 05/15/07 DRAWN BY TMH CHECKED BY MJK

TENG
TENGG & ASSOCIATES, INC.
ENGINEERS/ARCHITECTS/PLANNERS
CHICAGO, ILLINOIS

PLT DATE = 05/15/07
FILE NAME = 62895_114R-1_GeneralPlan.dwg
PLOT SCALE = 1/8"=1'-0"
USER NAME = RUSSEK

Revised 05/22/07, MDB