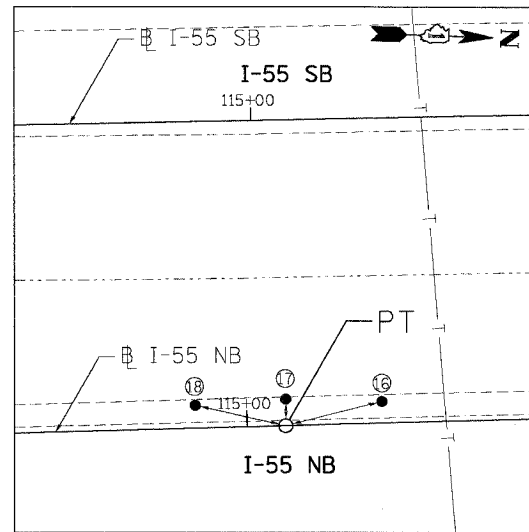
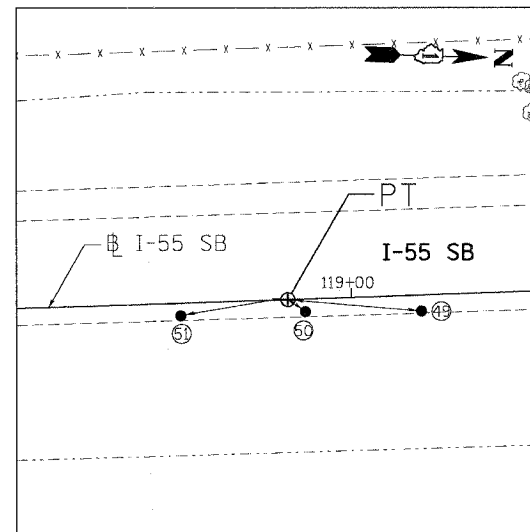


F.A.I. RTE.	SECTION	COUNTY	TOTAL SHEETS	SHEET NO.
55	99 (1&2) WRS	WILL	334	36
STA.		TO STA.		
FED. ROAD DIST. NO.		ILLINOIS FED. AID PROJECT		



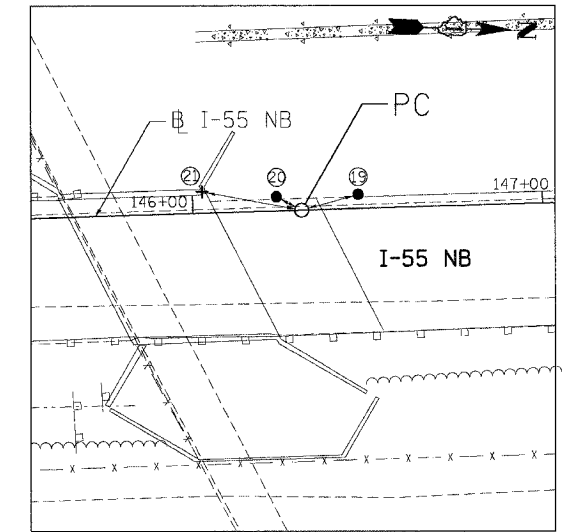
PT STA. 115+11.06 (SET PK NAIL)

- ⑬ SET PK NAIL, 28.36'
- ⑰ FND PK NAIL, 7.61'
- ⑱ SET PK NAIL, 26.54'



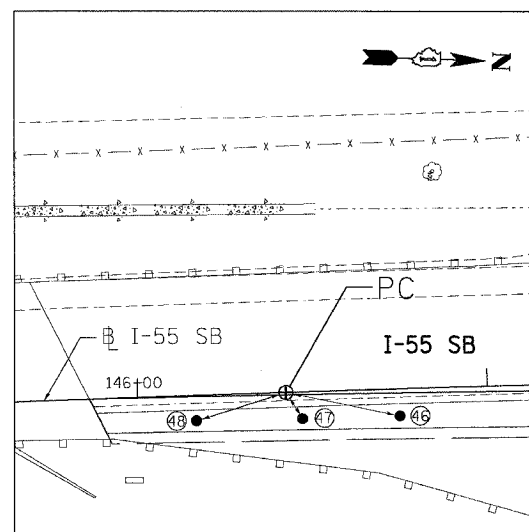
PT STA. 118+81.88 (SET PK NAIL)

- ④⑨ SET PK NAIL, 31.02'
- ⑤① SET PK NAIL, 5.81'
- ⑤② SET PK NAIL, 26.49'



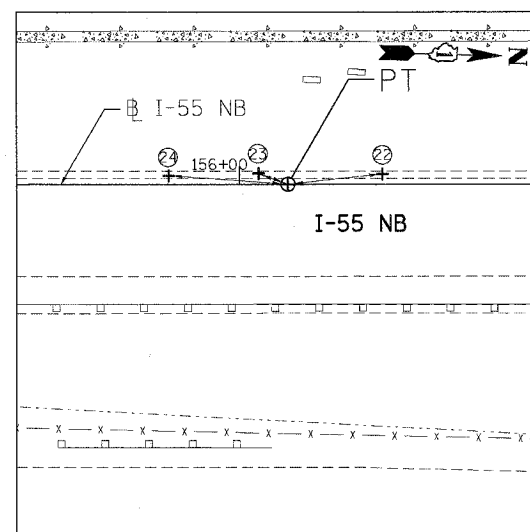
PC STA. 146+31.11 (SET PK NAIL)

- ⑲ SET PK NAIL, 16.73'
- ⑳ SET PK NAIL, 8.13'
- ㉑ SET + T/BWW, 28.94'



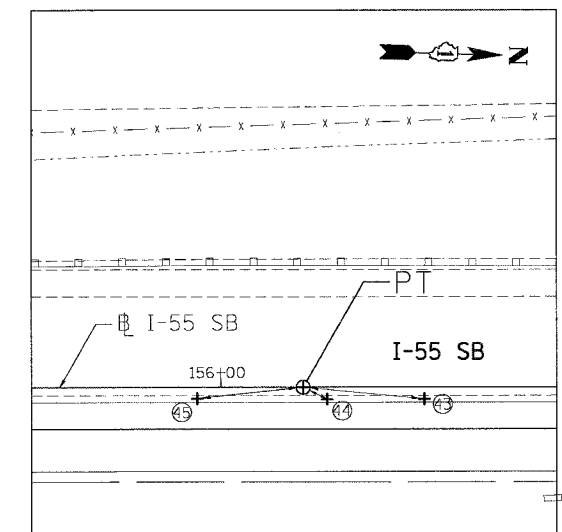
PC STA. 146+42.42 (SET CROSS)

- ④⑥ SET PK NAIL, 33.33'
- ④⑦ SET PK NAIL, 8.94'
- ④⑧ SET PK NAIL, 26.82'



PT STA. 156+13.82 (SET CROSS)

- ②② SET CUT/CROSS, 27.17'
- ②③ SET CUT/CROSS, 8.95'
- ②④ SET CUT/CROSS, 34.13'



PT STA. 156+23.52 (SET CROSS)

- ④③ SET CROSS, 34.81'
- ④④ SET CROSS, 7.69'
- ④⑤ SET CROSS, 30.39'

PLOT DATE = 02/23/07
 FILE NAME = 02/23/07_174622
 PLOT SCALE = 1/4"=1'-0"
 USER NAME = DDH

REVISIONS	
NAME	DATE

ILLINOIS DEPARTMENT OF TRANSPORTATION
 FAI ROUTE 55 (I-80 TO BLACK ROAD)
 WIDENING AND RESURFACING

**ALIGNMENT, TIES AND BENCHMARKS
 III**

SCALE: N.T.S. DRAWN BY SB
 DATE 02/23/07 CHECKED BY DDH

TENG
 TENG & ASSOCIATES, INC.
 ENGINEERS/ARCHITECTS/PLANNERS
 CHICAGO, ILLINOIS