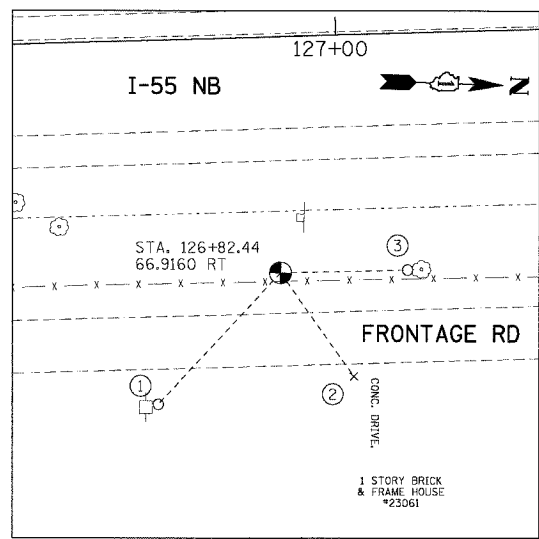
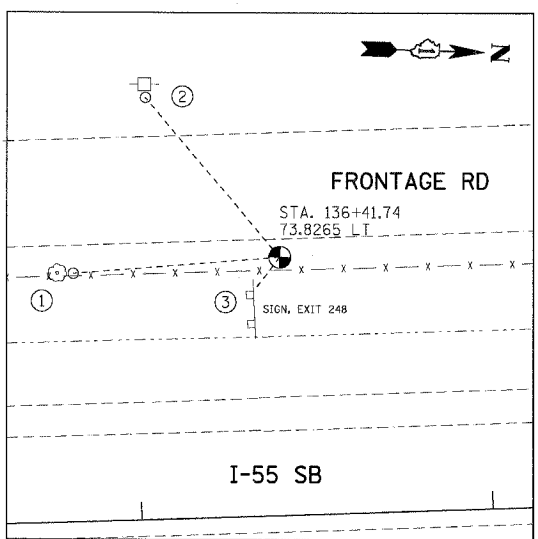


F.A.I. RTE.	SECTION	COUNTY	TOTAL SHEETS	SHEET NO.
55	99 (1&2) WRS	WILL	334	39
STA.		TO STA.		
FED. ROAD DIST. NO.		ILLINOIS FED. AID PROJECT		



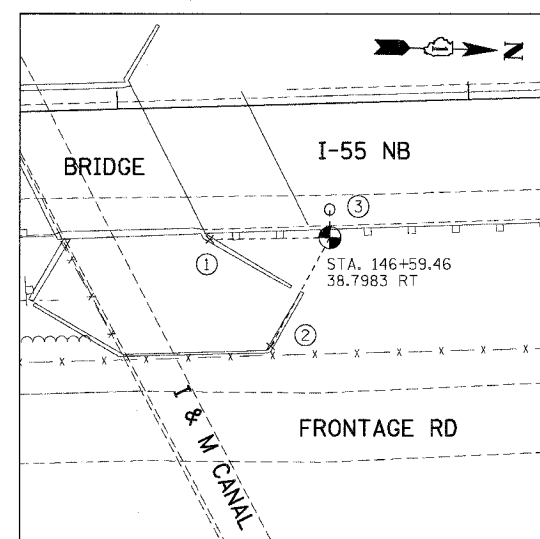
TP1

- (N 1747171.665, E 1021895.312, ELEV. 537.694)
- ① PK NAIL ON WEST FACE OF POWER POLE, 70.70'
 - ② CUT CROSS IN CONC. DRIVEWAY, 52.12'
 - ③ PK NAIL ON SOUTH FACE OF 12" TREE, 36.18'



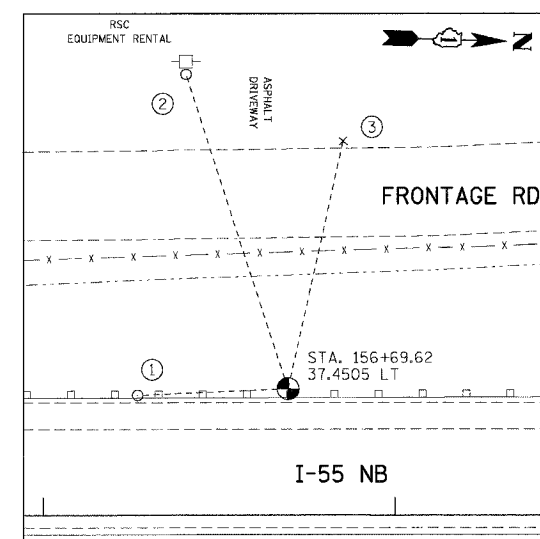
TP2

- (N 1748118.259, E 1021602.430, ELEV. 527.049)
- ① PK NAIL ON EAST FACE OF 10" TREE, 44.45'
 - ② PK NAIL ON WEST FACE OF POWER POLE, 59.00'
 - ③ NEAREST CORNER OF SIGN POST, 12.30'



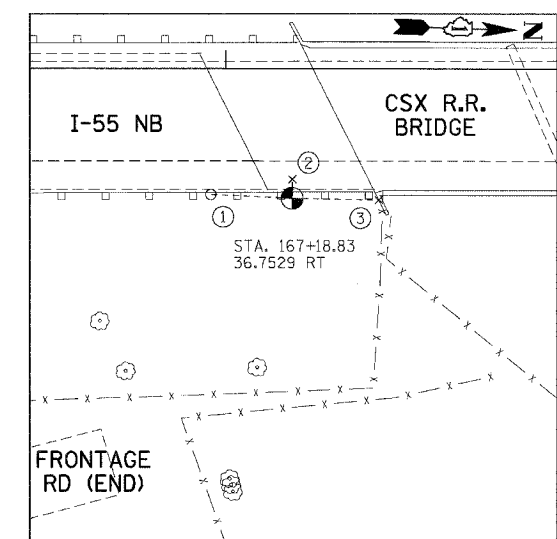
TP3

- (N 1749143.319, E 1021747.490, ELEV. 536.290)
- ① CUT CROSS ON TOP OF CONC. WALL, 34.20'
 - ② CUT CROSS ON TOP OF CONC. WALL, 35.25'
 - ③ PK NAIL IN ASPH. SHOULDER, 7.86'



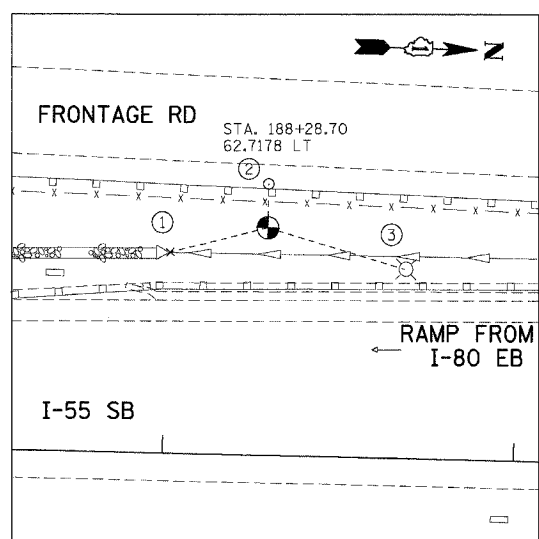
TP4

- (N 1750146.468, E 1021525.206, ELEV. 558.007)
- ① PK NAIL IN ASPHALT, 42.86'
 - ② PK NAIL ON EAST FACE OF POWER POLE, 93.72'
 - ③ CUT CROSS ON TOP OF CONC. CURB, 71.98'



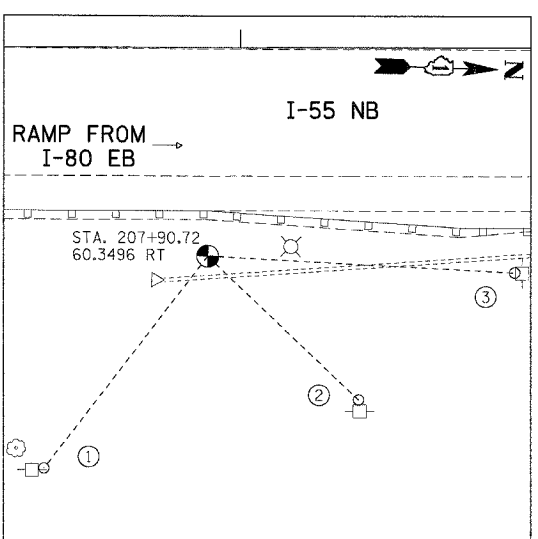
TP5

- (N 1751199.973, E 1021668.568, ELEV. 577.182)
- ① PK NAIL IN ASPHALT, 23.15'
 - ② CUT CROSS IN BRIDGE DECK, 5.35'
 - ③ CUT CROSS ON TOP OF WINGWALL, 24.65'



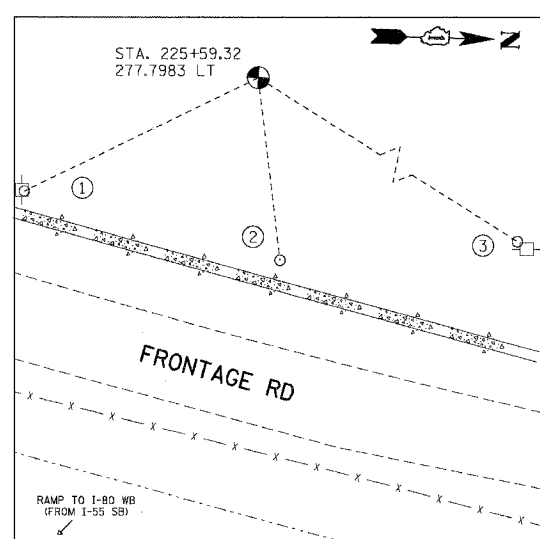
TP6

- (N 1753305.294, E 1021429.772, ELEV. 573.834)
- ① CUT CROSS ON TOP OF RCP 40", 28.60'
 - ② PK NAIL IN ASPHALT, 12.50'
 - ③ SOUTH FACE OF LIGHT POLE, 40.50'



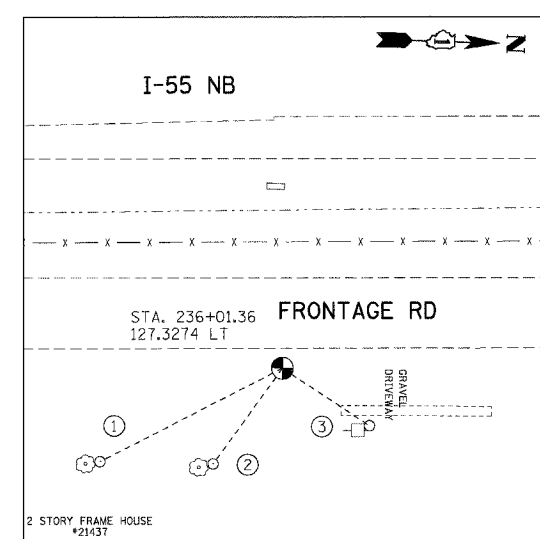
TP7

- (N 1755270.636, E 1021567.644, ELEV. 585.682)
- ① PK NAIL ON NORTH FACE OF POWER POLE, 76.45'
 - ② PK NAIL ON WEST FACE OF POWER POLE, 59.20'
 - ③ PK NAIL ON SOUTH FACE OF POWER POLE, 87.50'



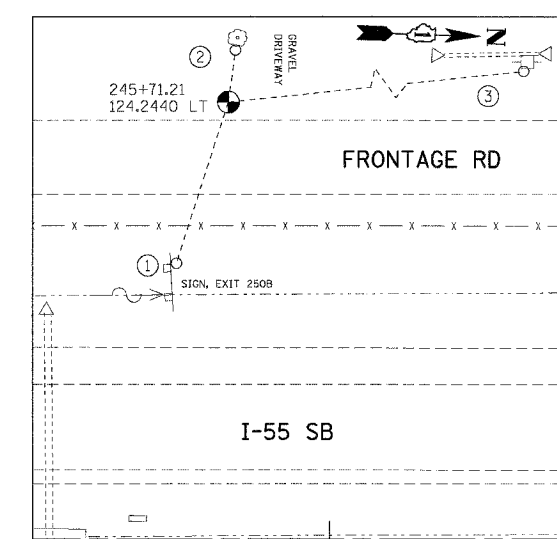
TP8

- (N 1757027.413, E 1021155.818, ELEV. 595.624)
- ① PK NAIL ON NORTH FACE OF POWER POLE, 74.05'
 - ② WILLTEL STAND. PIPE, 52.34'
 - ③ PK NAIL ON SOUTH FACE OF POWER POLE, 139.20'



TP9

- (N 1758081.471, E 1021528.564, ELEV. 589.434)
- ① PK NAIL ON NORTH FACE OF 14" TREE, 58.37"
 - ② PK NAIL ON NORTH FACE OF 24" TREE, 33.75'
 - ③ PK NAIL ON NORTH FACE OF POWER POLE, 29.65'



TP10

- (N 1759043.088, E 1021247.156, ELEV. 591.034)
- ① NEAREST CORNER OF SIGN POST, 48.17'
 - ② PK NAIL ON EAST FACE OF 26" TREE, 14.90'
 - ③ PK NAIL ON EAST FACE OF POWER POLE, 161.26'

NOTE:
ALL CONTROL POINTS ON THIS SHEET WERE SET WITH 2" IRON ROD WITH YELLOW CAP

REVISIONS	
NAME	DATE

ILLINOIS DEPARTMENT OF TRANSPORTATION
 FAI ROUTE 55 (I-80 TO BLACK ROAD)
 WIDENING AND RESURFACING

ALIGNMENT, TIES AND BENCHMARKS VI

SCALE: N.T.S. DRAWN BY SKJ
 DATE 02/23/07 CHECKED BY DDH

TENG TENG & ASSOCIATES, INC.
 ENGINEERS/ARCHITECTS/PLANNERS
 CHICAGO, ILLINOIS

PLOT DATE = 02/23/07
 FILE NAME = 022307.DWG
 PLOT SCALE = 1"=40'
 USER NAME = JESPER