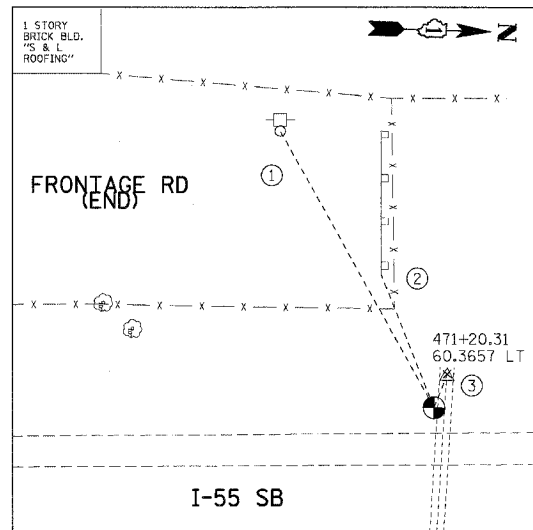
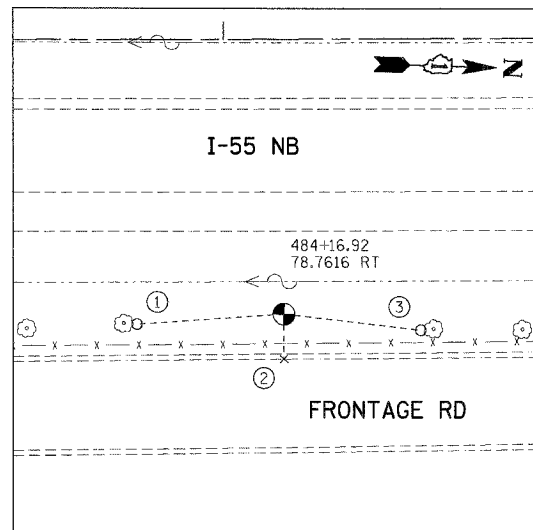


F.A.I. RTE.	SECTION	COUNTY	TOTAL SHEETS	SHEET NO.
55	99 (1&2) WRS	WILL	334	42
STA.		TO STA.		
FED. ROAD DIST. NO.		ILLINOIS FED. AID PROJECT		



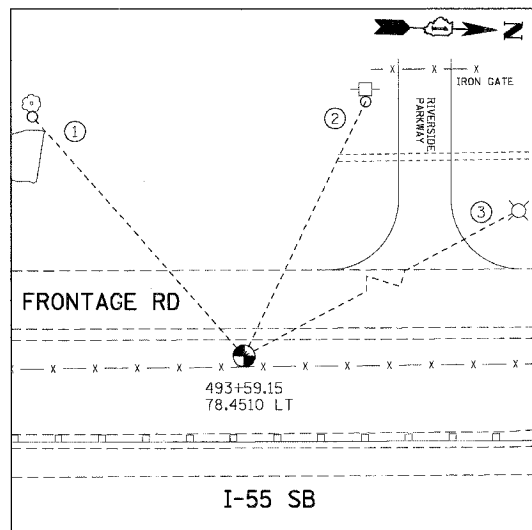
TP31

- (N 1780473.889, E 1026024.869, ELEV. 590.948)
- ① PK NAIL ON EAST FACE OF POWER POLE, 90.30'
 - ② EAST END OF GUARDRAIL, 40.90'
 - ③ CROSS CUT ON TOP OF CULVERT (48" RCP), 10.30'



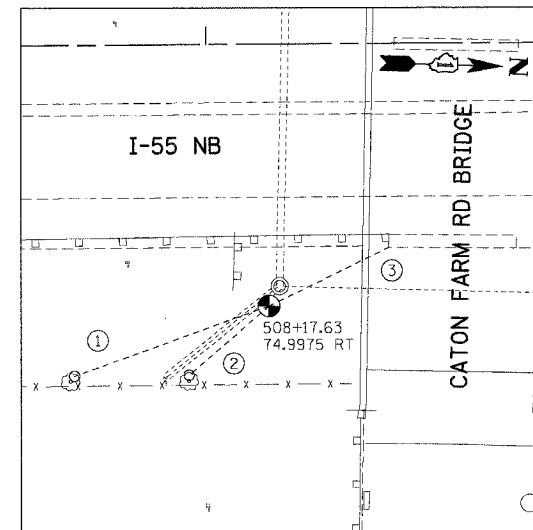
TP32

- (N 1781774.617, E 1026117.977, ELEV. 590.111)
- ① PK NAIL ON NORTH FACE OF 14" TREE, 42.10'
 - ② CROSS CUT ON TOP OF CURB, 12.70'
 - ③ PK NAIL ON SOUTH FACE OF 14" TREE, 39.35'



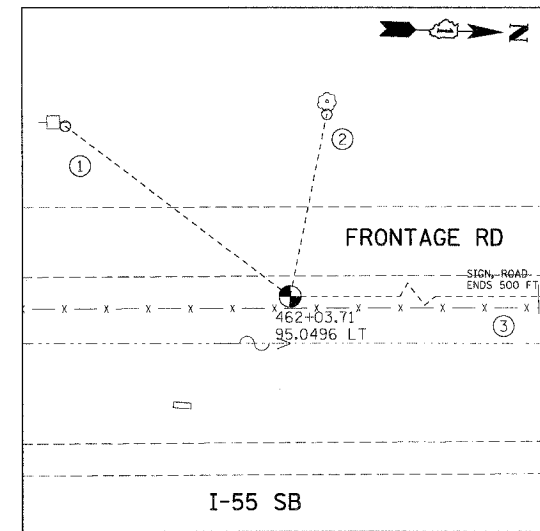
TP33

- (N 1782710.684, E 1025927.485, ELEV. 593.501)
- ① PK NAIL ON EAST FACE OF 14" TREE, 91.21'
 - ② PK NAIL ON EAST FACE OF POWER POLE, 80.63'
 - ③ NEAREST FACE OF LIGHT POLE, 123.90'



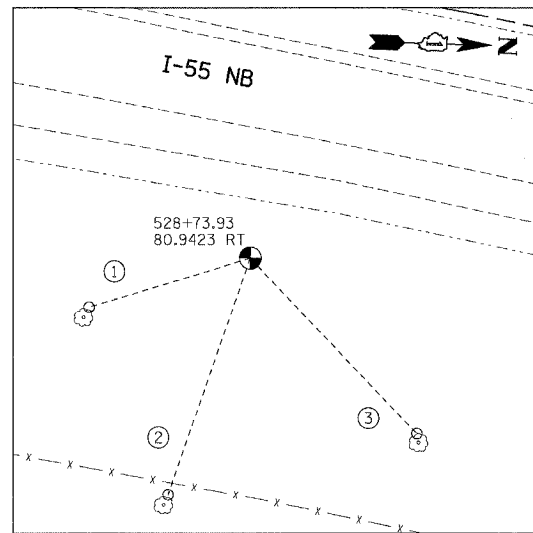
TP34

- (N 1784173.688, E 1026029.171, ELEV. 594.050)
- ① PK NAIL ON WEST FACE OF 10" TREE, 58.95'
 - ② PK NAIL ON WEST FACE OF 16" TREE, 30.10'
 - ③ NEAREST CORNER OF CONC. PIER BASE, 38.40'



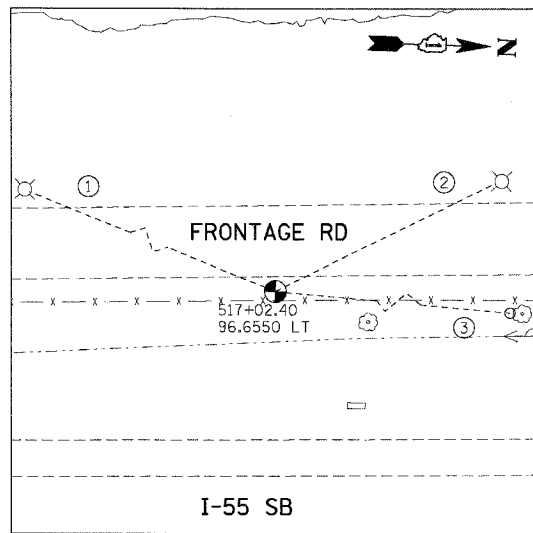
TP35

- (N 1779556.639, E 1026022.677, ELEV. 591.351)
- ① PK NAIL ON NORTH FACE OF POWER POLE, 80.45'
 - ② PK NAIL ON EAST FACE OF 8" TREE, 63.00'
 - ③ NEAREST CORNER OF SIGN POST, 232.20'



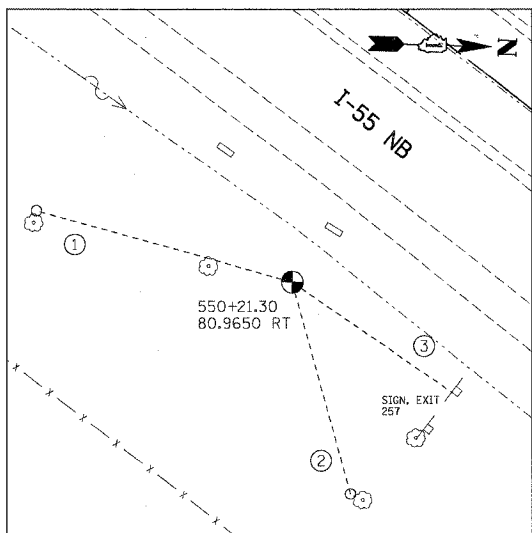
TP36

- (N 1786210.447, E 1026049.592, ELEV. 613.010)
- ① PK NAIL ON WEST FACE OF 12" TREE, 48.10'
 - ② PK NAIL ON WEST FACE OF 16" TREE, 71.30'
 - ③ PK NAIL ON WEST FACE OF 20" TREE, 69.00'



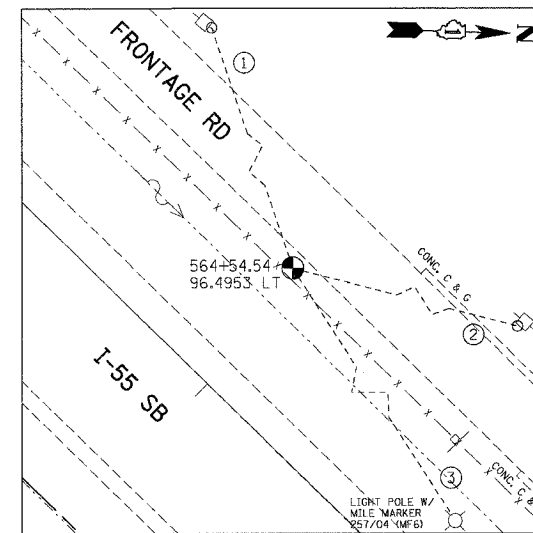
TP37

- (N 178505.820, E 1025826.282, ELEV. 591.733)
- ① PK NAIL ON NEAREST FACE OF LIGHT POLE, 115.26'
 - ② PK NAIL ON NEAREST FACE OF LIGHT POLE, 70.05'
 - ③ PK NAIL ON SOUTH FACE OF 8" TREE, 85.00'



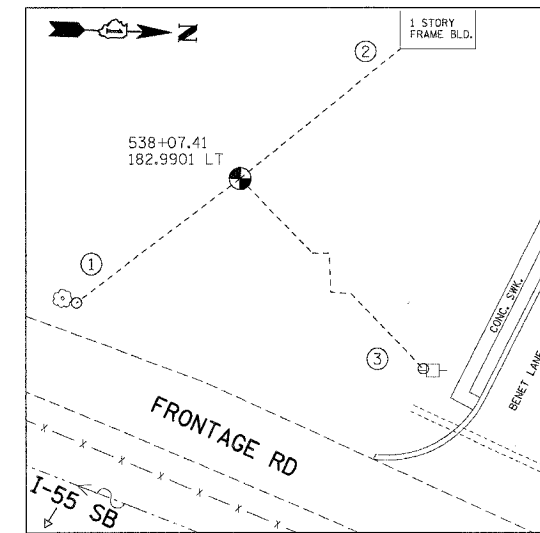
TP38

- (N 1788140.673, E 1026852.265, ELEV. 622.426)
- ① PK NAIL ON WEST FACE OF 12" TREE, 75.80'
 - ② PK NAIL ON SOUTH FACE OF 40" TREE, 62.60'
 - ③ NEAREST CORNER OF SIGN POST, 56.70'



TP39

- (N 1789328.938, E 1027661.770, ELEV. 615.232)
- ① PK NAIL ON NORTH FACE OF POWER POLE, 107.75'
 - ② PK NAIL ON EAST FACE OF POWER POLE, 93.25'
 - ③ NEAREST FACE OF LIGHT POLE, 119.10'



TP40

- (N 1787188.516, E 102604.155, ELEV. 627.130)
- ① PK NAIL ON NORTH FACE OF 12" TREE, 58.60'
 - ② NEAREST CORNER OF BUILDING, 59.00'
 - ③ PK NAIL ON SOUTH FACE OF POWER POLE, 101.50'

NOTE:
ALL CONTROL POINTS ON THIS SHEET WERE SET WITH 2" IRON ROD WITH YELLOW CAP

REVISIONS	
NAME	DATE

ILLINOIS DEPARTMENT OF TRANSPORTATION
FAI ROUTE 55 (I-80 TO BLACK ROAD)
WIDENING AND RESURFACING

ALIGNMENT, TIES AND BENCHMARKS
IX

SCALE: N.T.S. DRAWN BY SKJ
DATE 02/23/07 CHECKED BY DDH

TENG TENG & ASSOCIATES, INC.
ENGINEERS/ARCHITECTS/PLANNERS
CHICAGO, ILLINOIS

PLOT DATE = 02/23/07
 FILE NAME = 02/23/07
 PLOT SCALE = 1/8"=1'-0"
 USER NAME = DDH