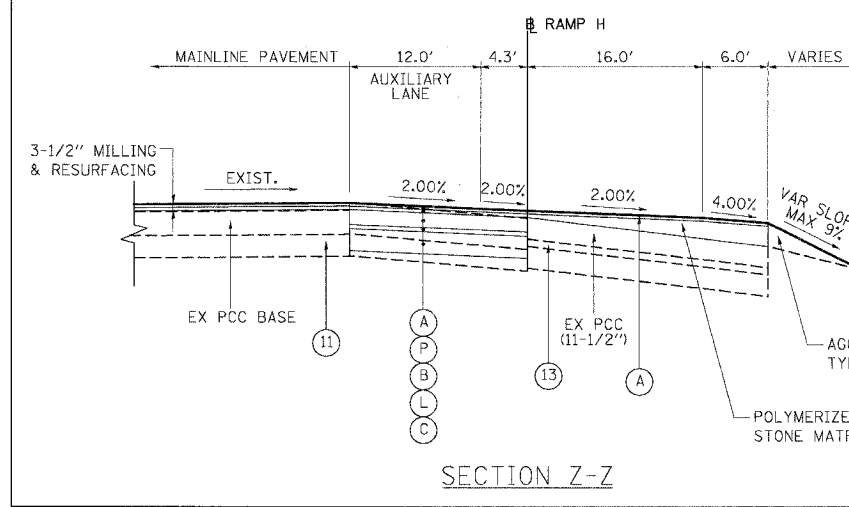


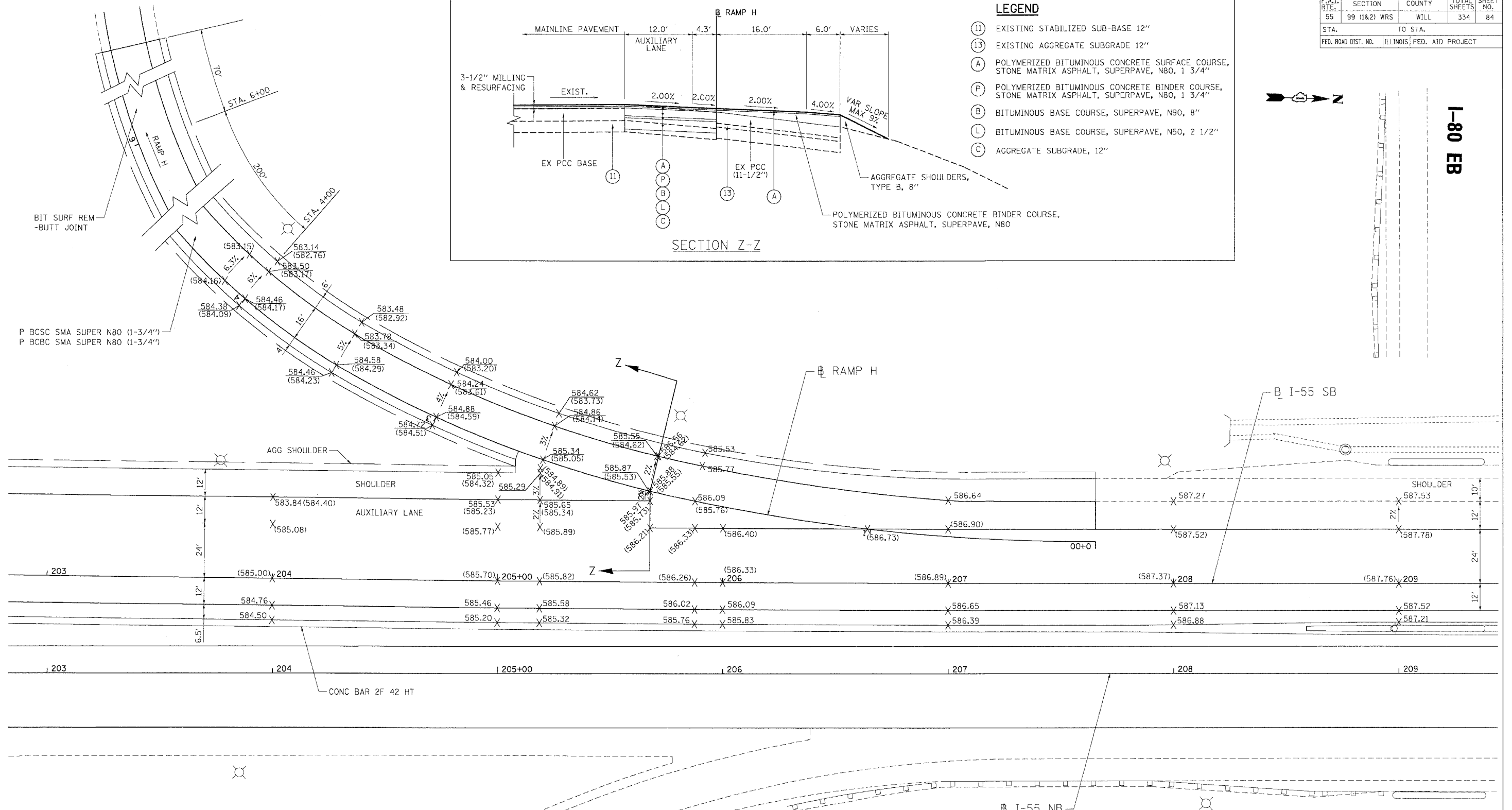
F.A.I. RTE.	SECTION	COUNTY	TOTAL SHEETS	SHEET NO.
55	99 (1&2) WRS	WILL	334	84
STA.		TO STA.		
FED. ROAD DIST. NO.		ILLINOIS FED. AID PROJECT		

LEGEND

- (11) EXISTING STABILIZED SUB-BASE 12"
- (13) EXISTING AGGREGATE SUBGRADE 12"
- (A) POLYMERIZED BITUMINOUS CONCRETE SURFACE COURSE, STONE MATRIX ASPHALT, SUPERPAVE, N80, 1 3/4"
- (P) POLYMERIZED BITUMINOUS CONCRETE BINDER COURSE, STONE MATRIX ASPHALT, SUPERPAVE, N80, 1 3/4"
- (B) BITUMINOUS BASE COURSE, SUPERPAVE, N90, 8"
- (L) BITUMINOUS BASE COURSE, SUPERPAVE, N50, 2 1/2"
- (C) AGGREGATE SUBGRADE, 12"



I-80 EB



LEGEND

- (000.00) EXISTING ELEVATIONS
- 000.00** PROPOSED ELEVATIONS

REVISIONS	
NAME	DATE

ILLINOIS DEPARTMENT OF TRANSPORTATION
 I-80 TO BLACK ROAD
 WIDENING AND RESURFACING

**PAVEMENT ELEVATION DETAILS
 I-55 SB EXIT RAMP TO I-80
 AND AUXILIARY LANE**

SCALE: 1"=20'
 DATE 02/23/07
 DRAWN BY AG
 CHECKED BY DDH

TENG
 TENG & ASSOCIATES, INC.
 ENGINEERS/ARCHITECTS/PLANNERS
 CHICAGO, ILLINOIS

PLOT DATE = 02/23/07
 FILE NAME = I-80 EB
 PLOT SCALE = 1"=20'
 USER NAME = DDH