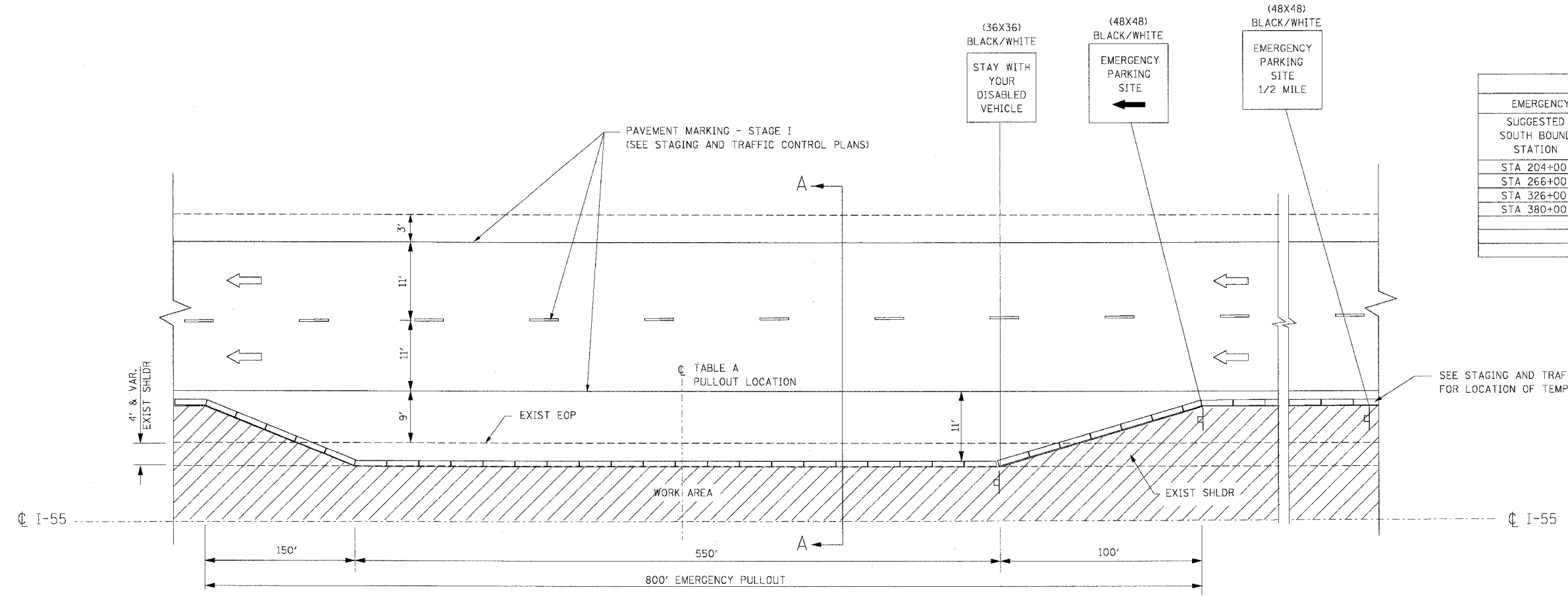


F.A.I. RTE.	SECTION	COUNTY	TOTAL SHEETS	SHEET NO.
55	99 (I&2) WRS	WILL	334	136
STA.		TO STA.		
FED. ROAD DIST. NO.		ILLINOIS	FED. AID PROJECT	

SUGGESTED SOUTH BOUND STATION	SUGGESTED NORTH BOUND STATION
STA 204+00	STA 216+00
STA 266+00	STA 386+00
STA 326+00	
STA 380+00	



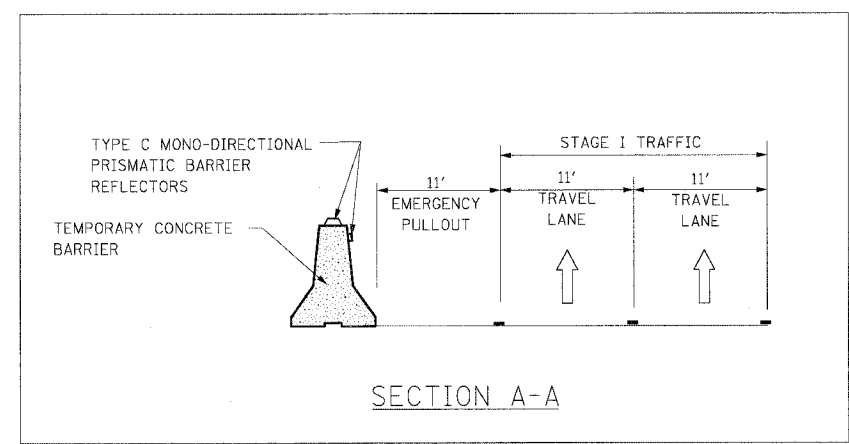
**EMERGENCY PULL OUT  
HALF ROADWAY PLAN  
STAGE I**

**NOTES:**

- EMERGENCY PULLOUTS INSTALLED DURING STAGE I CONSTRUCTION SHALL BE LOCATED AS SPECIFIED IN TABLE A. THE LOCATIONS SHALL BE APPROVED BY THE ENGINEER.
- EMERGENCY PULLOUTS SHALL BE RELOCATED TO AN ADJACENT LOCATION, APPROVED BY THE ENGINEER, TO COMPLETE STAGE I WORK. THE RELOCATION OF THE TEMPORARY CONCRETE BARRIER WILL BE PAID AT THE CONTRACT UNIT PRICE FOR "RELOCATE TEMPORARY BARRIER".
- ALL EMERGENCY PULLOUTS SIGNS WILL BE PAID FOR AT THE CONTRACT UNIT PRICE FOR "TEMPORARY INFORMATION SIGNING".
- THE COST OF THE TRAFFIC CONTROL REQUIRED FOR THE INSTALLATION AND RELOCATION OF EMERGENCY PULLOUTS AND THE COST OF RELOCATION OF THE TEMPORARY INFORMATION SIGNING FOR EMERGENCY PULLOUTS WILL NOT BE PAID FOR SEPARATELY AND SHALL BE INCLUDED IN THE CONTRACT UNIT PRICE FOR "TRAFFIC CONTROL AND PROTECTION (EXPRESSWAYS)".

**LEGEND:**

- DIRECTION OF TRAFFIC
- WORK AREA
- SIGN ON SUPPORT
- TEMPORARY CONCRETE BARRIER



NAME	DATE

ILLINOIS DEPARTMENT OF TRANSPORTATION  
FAI ROUTE 55 (I-80 TO BLACK ROAD)  
WIDENING AND RESURFACING

**STAGING AND TRAFFIC CONTROL  
DETAIL FOR  
EMERGENCY PULLOUT**

SCALE: N.T.S.      DRAWN BY  
DATE: 02/23/07      CHECKED BY: DDH

**TENG**      TENG & ASSOCIATES, INC.  
ENGINEERS/ARCHITECTS/PLANNERS  
CHICAGO, ILLINOIS

PLOT DATE:    # DATE:    #  
 FILE NAME:   # FILE:   #  
 USER NAME:   # USER:   #  
 USED: EMERGENCY PULLOUT.DWG, 1/23/07, 10:00 AM, DDH  
 2-23-2007, 11:55:51, WKS:SRKZ, S:\DOCUMENT\022307\55R\CIVIL\DDH\108109465.DWG