

| F.A.I. RTE.         | SECTION      | COUNTY   | TOTAL SHEETS     | SHEET NO. |
|---------------------|--------------|----------|------------------|-----------|
| 55                  | 99 (1&2) WRS | WILL.    | 334              | 186       |
| STA.                |              | TO STA.  |                  |           |
| FED. ROAD DIST. NO. |              | ILLINOIS | FED. AID PROJECT |           |

**DETENTION BASIN AT IL-59**

**DETENTION BASIN INFORMATION**  
 100-YEAR  
 DETENTION VOLUME REQUIRED = 0.275 AC-FT  
 DETENTION VOLUME PROVIDED = 0.505 AC-FT  
 HIGH WATER ELEVATION = 584.0

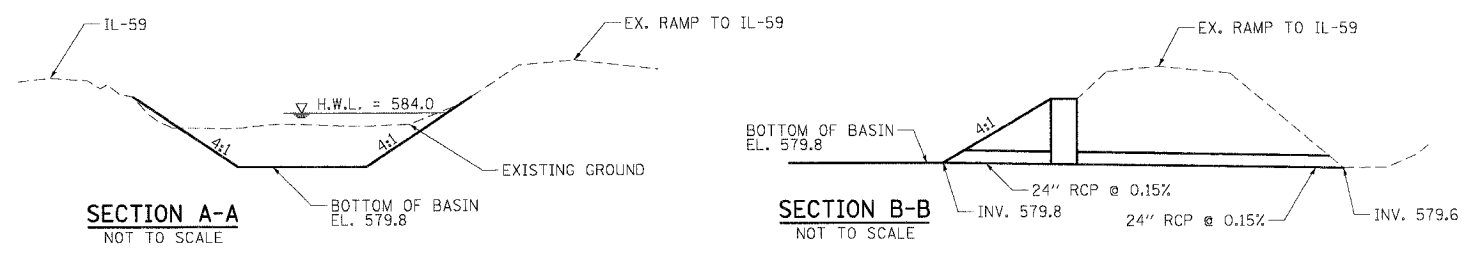
**LEGEND**  
 ✕ TREE REMOVAL

CUT = 2,200 CU YD  
 TOPSOIL REMOVAL = 328 CU YD

N=1764556.99  
 E=1021306.69

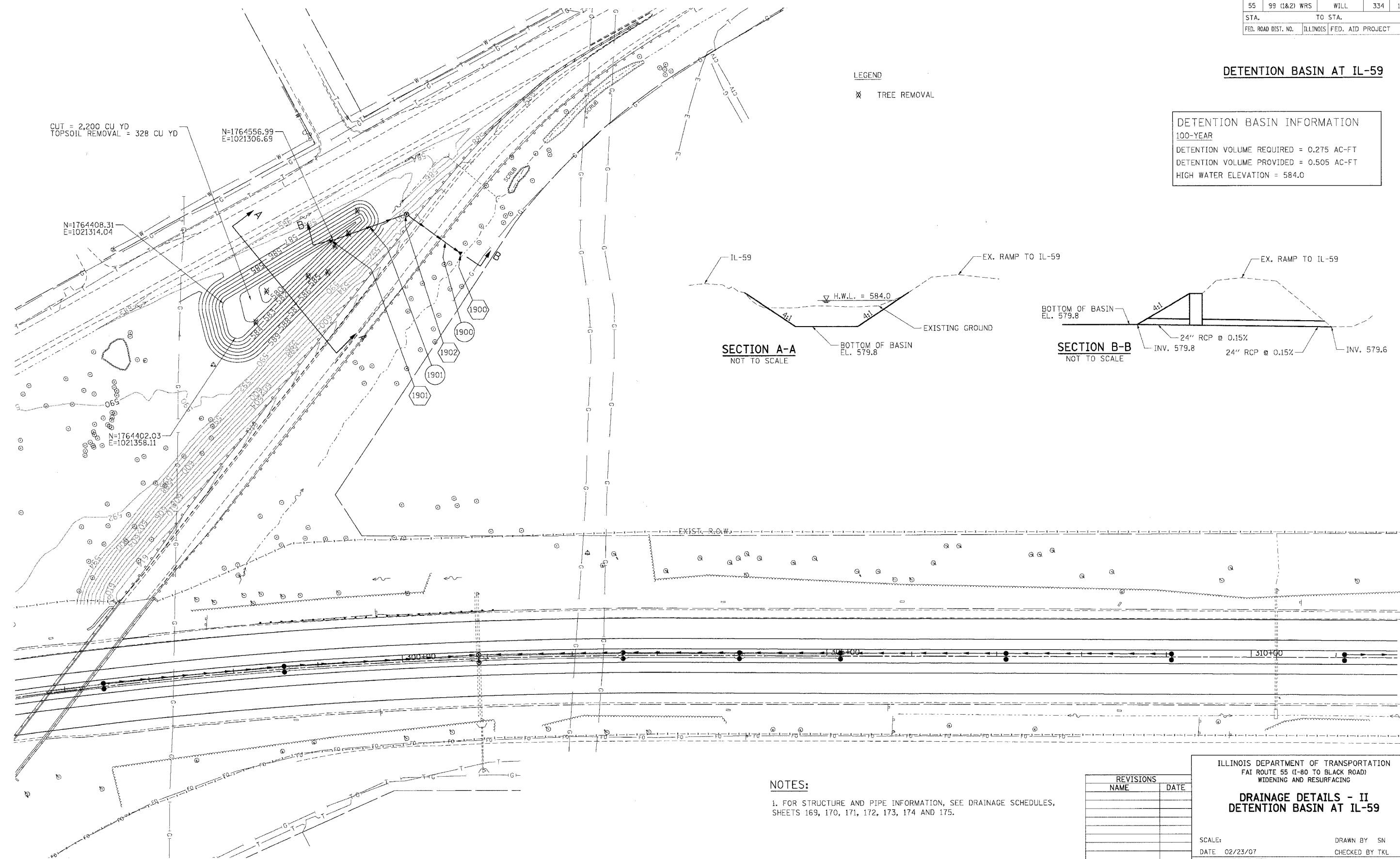
N=1764408.31  
 E=1021314.04

N=1764402.03  
 E=1021358.11



**SECTION A-A**  
 NOT TO SCALE

**SECTION B-B**  
 NOT TO SCALE



**NOTES:**  
 1. FOR STRUCTURE AND PIPE INFORMATION, SEE DRAINAGE SCHEDULES, SHEETS 169, 170, 171, 172, 173, 174 AND 175.

| REVISIONS |      |
|-----------|------|
| NAME      | DATE |
|           |      |
|           |      |
|           |      |
|           |      |
|           |      |

ILLINOIS DEPARTMENT OF TRANSPORTATION  
 I-55 TO BLACK ROAD  
 WIDENING AND RESURFACING

**DRAINAGE DETAILS - II**  
**DETENTION BASIN AT IL-59**

SCALE: \_\_\_\_\_ DRAWN BY SN  
 DATE 02/23/07 CHECKED BY TKL

**TENG**  
 TENG & ASSOCIATES, INC.  
 ENGINEERS/ARCHITECTS/PLANNERS  
 CHICAGO, ILLINOIS

PLOT DATE = 02/23/07  
 FILE NAME = 022307.DWG  
 PLOT SCALE = 1/8"=1'-0"  
 USER NAME = BUBER