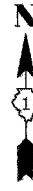
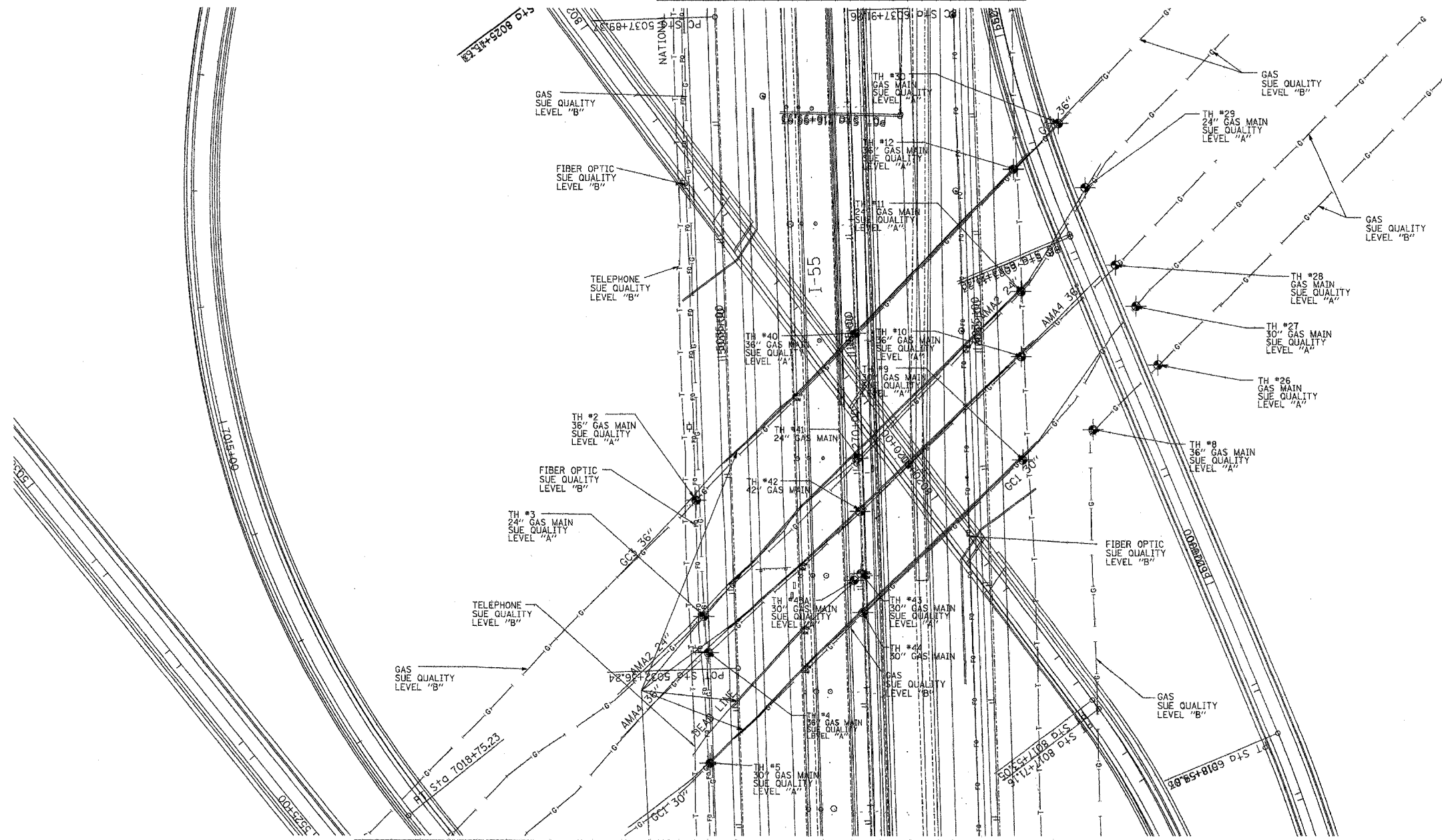


| | | | | |
|---------------------|-----------------------------------------|---------------------------|--------------|-----------|
| F.A. RTE. | SECTION | COUNTY | TOTAL SHEETS | SHEET NO. |
| | 99 (1&2) WRS. 99 (1&2) WRS-2 & 2006-031 | Will | 334 | 203 |
| STA. 267+00 | | TO STA. 274+00 | | |
| FED. ROAD DIST. NO. | | ILLINOIS FED. AID PROJECT | | |



MATCH TO PAGE 11



MATCH TO PAGE 9

The SBC locations depicted have been obtained through the application of geophysical methods to determine the existence and approximate horizontal position of these facilities. However, SBC will not provide TBE Group, Inc. with utility records nor allow access to their field closures (pedestals/manholes etc.), to help verify the locations of their existing underground facilities. Therefore, TBE is unable to verify the completeness of the SBC locations depicted in accordance with the CI/ASCE Standard 38-02.

Utilities shown on these plans as depicted in the legend have been investigated by TBE Group, Inc in accordance with SUE Industry Standards. All other information shown has been provided to TBE Group, Inc by others. Changes to utilities after dates shown may have been made and therefore may result in variances from this plan. Consideration should be given to updating this plan if deemed advisable prior to final design and construction.



TBE GROUP, INC.
 CIVIL ENGINEERING * TRANSPORTATION * ENVIRONMENTAL
 * PLANNING * UTILITY ENGINEERING/LOCATING

IL09500132, 142, 158, 229, 245
 TBE SUE PAGE NO: 10 of 29
 Checked by: *[Signature]*
 Utility Quality Level "A": Test Holes
 Utility Quality Level "B": Designating

| | |
|---------------------------|------------------|
| —>—>—>—>—> | FORCE MAIN |
| —T—T—T—T—T—T— | TELEPHONE |
| —W—W—W—W—W—W— | WATER |
| —G—G—G—G—G—G— | GAS |
| —CTV—CTV—CTV—CTV—CTV—CTV— | CABLE TELEVISION |
| —FO—FO—FO—FO—FO—FO— | FIBER OPTIC |
| —E—E—E—E—E—E— | ELECTRIC |
| ⊙ | TEST HOLE |

205 W. WACKER DRIVE
 SUITE 1020
 CHICAGO, IL 60606
 (312) 704-1970

| REVISIONS | |
|-----------|------|
| NAME | DATE |
| | |
| | |
| | |
| | |
| | |
| | |
| | |

ILLINOIS DEPARTMENT OF TRANSPORTATION
 SUE Investigation of Underground Utilities
 I-55/I-80 from US RT. 30 to Weber Road
 Will County
 Section No. 99 (1&2) WRS. 99 (1&2) WRS-2 & 2006-031
 Contract No. 62895, 62896, 60B46 and 60B85
 SOL "A" DATE : 11/07/06 DRAWN BY : KLC
 SOL "B" DATE : 1/13/03 SCALE : 1" = 50'