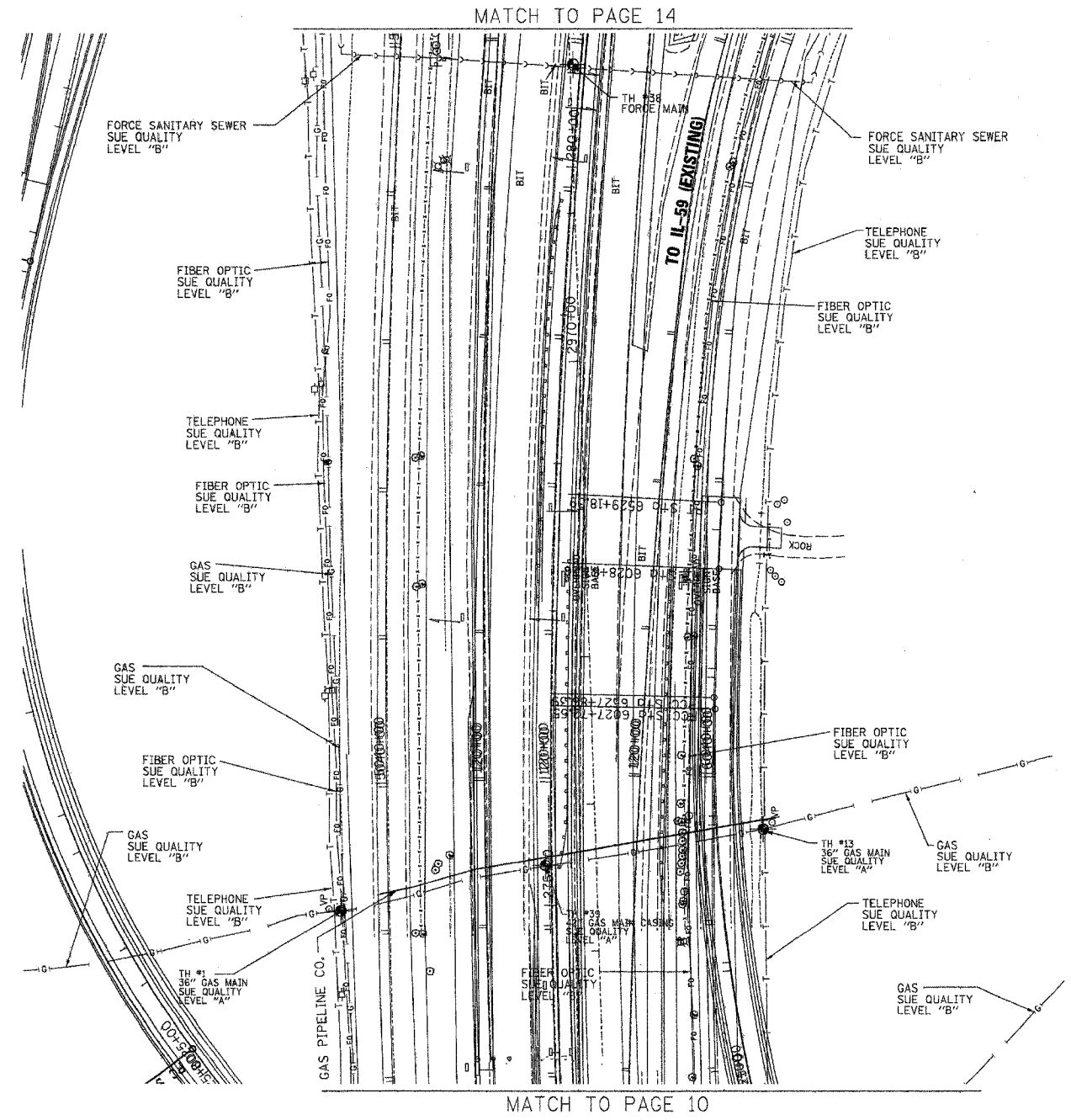
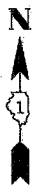


F.A. RTE.	SECTION	COUNTY	TOTAL SHEETS	SHEET NO.
99 (I&2) WRS, 99 (I&2) WRS-2, 2006-031	W111	W111	334	204
STA. 274+00		TO STA. 251+00		
FED. ROAD DIST. NO.		ILLINOIS FED. AID PROJECT		



The SBC locations depicted have been obtained through the application of geophysical methods to determine the existence and approximate horizontal position of these facilities. However, SBC will not provide TBE Group, Inc. with utility records nor allow access to their field closures (pedestals/manholes etc.), to help verify the locations of their existing underground facilities. Therefore, TBE is unable to verify the completeness of the SBC locations depicted in accordance with the CI/ASCE Standard 38-02.


Utilities shown on these plans as depicted in the legend have been investigated by TBE Group, Inc in accordance with SUE Industry Standards. All other information shown has been provided to TBE Group, Inc by others. Changes to utilities after dates shown may have been made and therefore may result in variances from this plan. Consideration should be given to updating this plan if deemed advisable prior to final design and construction.



**TBE GROUP, INC.**  
 CIVIL ENGINEERING \* TRANSPORTATION \* ENVIRONMENTAL  
 \* PLANNING \* UTILITY ENGINEERING/LOCATING

IL09500132, 142, 158, 229, 245  
 TBE SUE PAGE NO: 11 of 29  
 Checked by: *[Signature]*  
 Utility Quality Level "A" : Test Holes  
 Utility Quality Level "B" : Designating

—●—●—●—●—●—●—●—	FORCE MAIN
—T—T—T—T—T—T—T—	TELEPHONE
—W—W—W—W—W—W—W—	WATER
—G—G—G—G—G—G—G—	GAS
—CTV—CTV—CTV—CTV—CTV—CTV—CTV—	CABLE TELEVISION
—FO—FO—FO—FO—FO—FO—FO—	FIBER OPTIC
—E—E—E—E—E—E—E—	ELECTRIC
—●—	TEST HOLE

  
 205 W. WACKER DRIVE  
 SUITE 1020  
 CHICAGO, IL 60606  
 (312) 704-1970

REVISIONS	
NAME	DATE

ILLINOIS DEPARTMENT OF TRANSPORTATION  
 SUE Investigation of Underground Utilities  
 I-55/I-80 from US RT. 30 to Weber Road  
 Will County  
 Section No. 99 (I&2) WRS, 99 (I&2) WRS-2 & 2006-031  
 Contract No. 62895, 62896, 60846 and 60885  
 SOL "A" DATE : 11/07/06      DRAWN BY : KLC  
 SOL "B" DATE : 1/13/03      SCALE : 1" = 50'