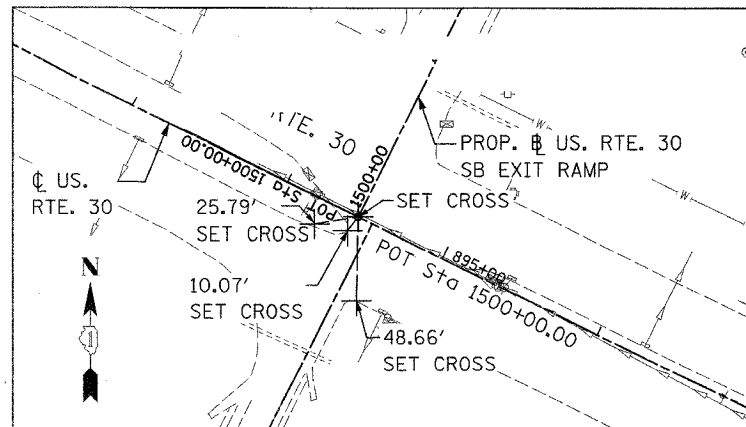
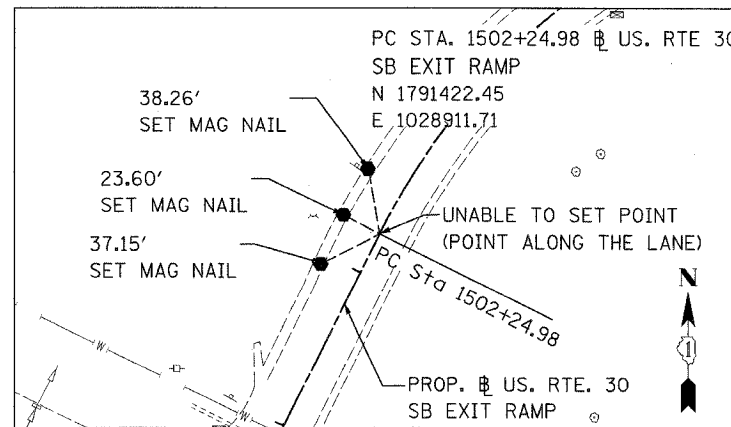


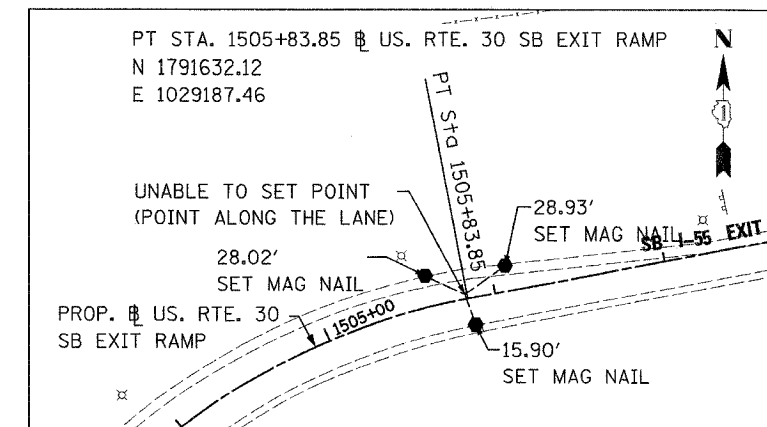
CONTRACT NO. 62896				
F.A.I. RTE.	SECTION	COUNTY	TOTAL SHEETS	SHEET NO.
55	99 (1&2) WRS-1	WILL	227	31
STA.		TO STA.		
FED. ROAD DIST. NO.		ILLINOIS FED. AID PROJECT		
ALIGN-12 OF 13				



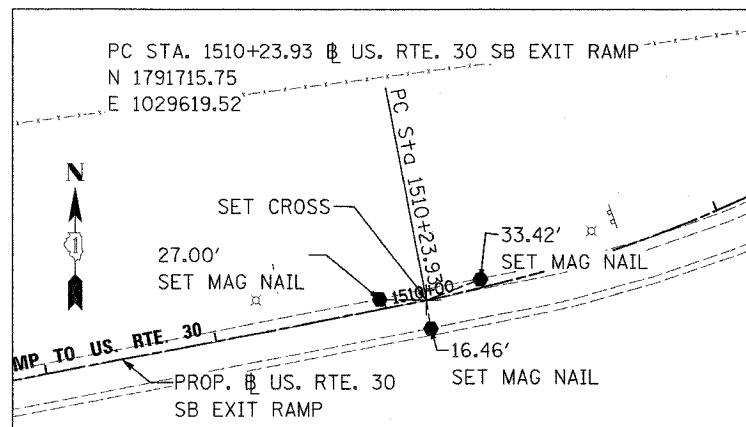
PC STA. 1500+00.00



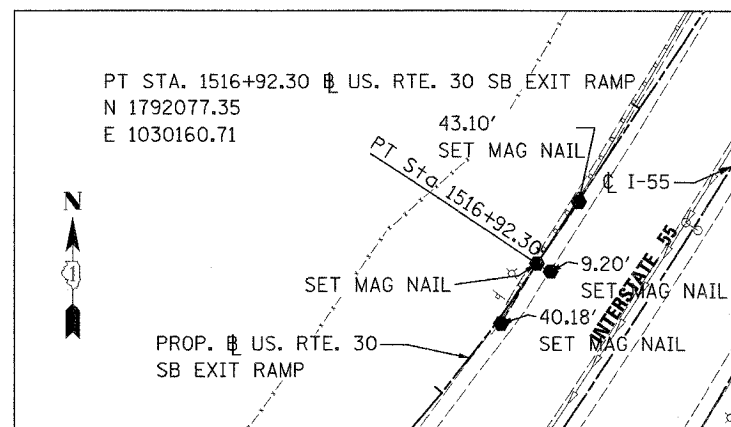
PC STA. 1502+24.98



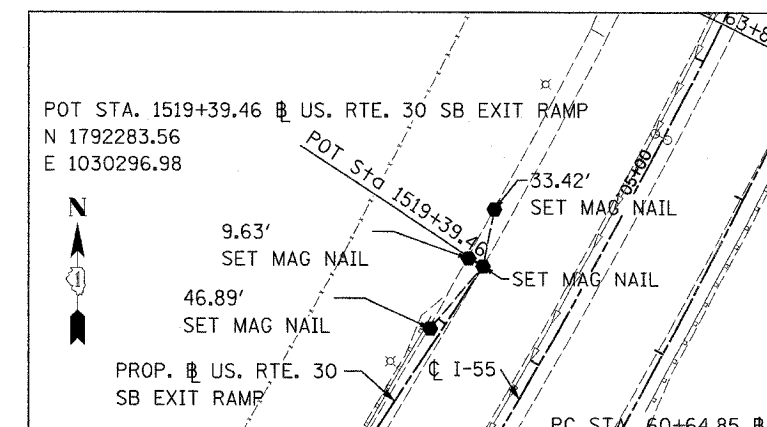
PT STA. 1505+63.85



PC STA. 1510+23.93



PT STA. 1516+92.30



POT STA. 1519+39.46

REVISIONS	
NAME	DATE

ILLINOIS DEPARTMENT OF TRANSPORTATION
 FAI ROUTE 55
 US 30 (PLAINFIELD ROAD) TO 143RD STREET
 ALIGNMENT, TIES, AND BENCHMARKS

SCALE: 1" = 50'
 DATE: 02-23-07

DRAWN BY: ALR
 CHECKED BY:



FINAL