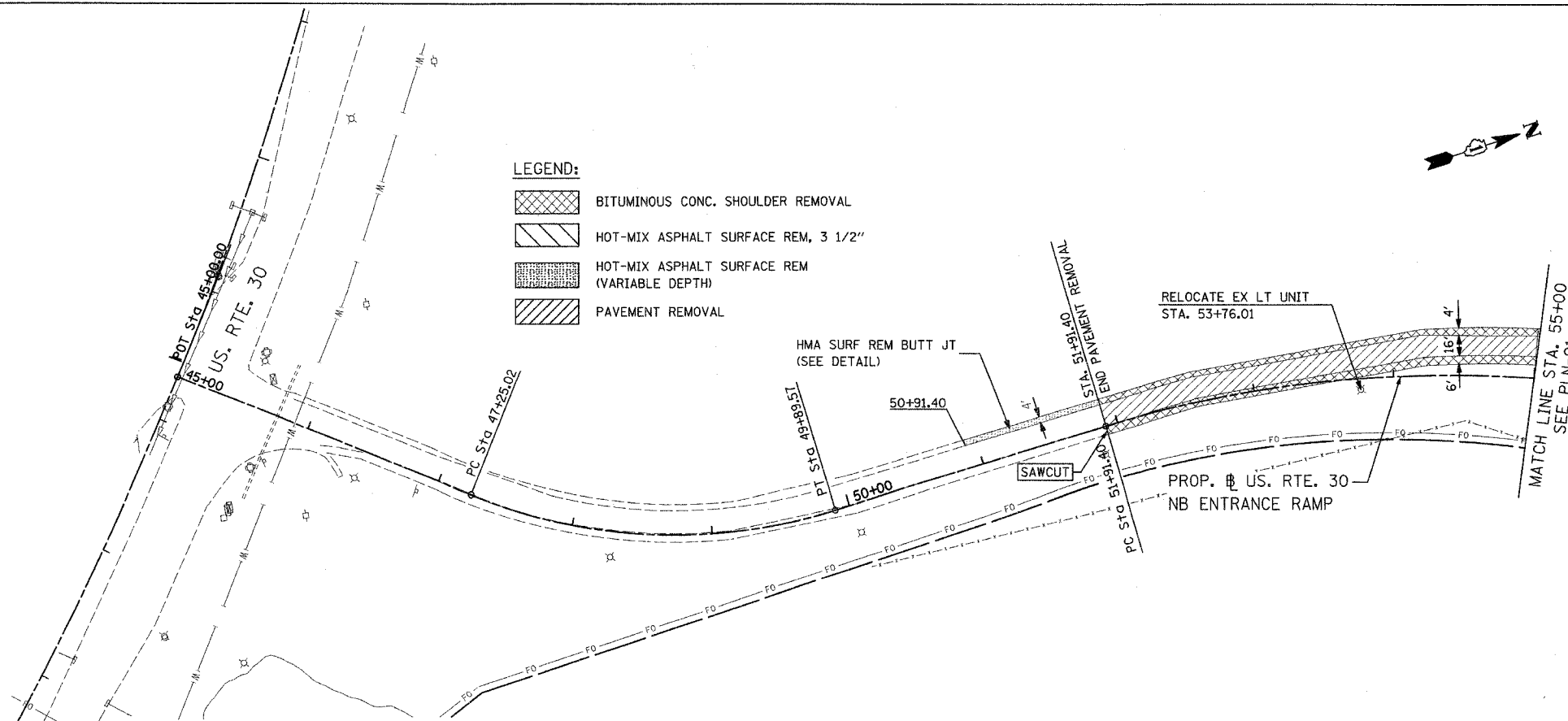
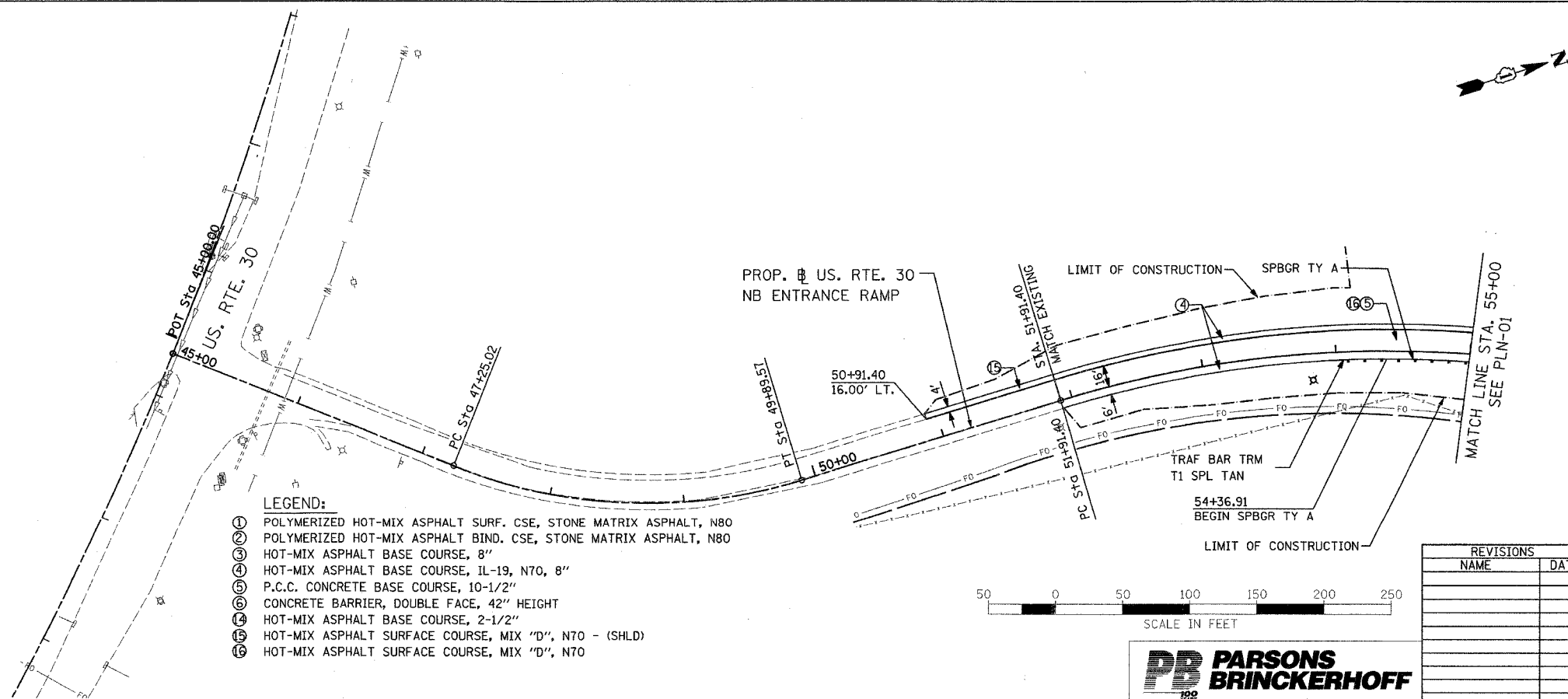


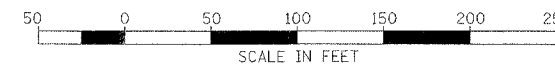
F.A.I. RTE.	SECTION	COUNTY	TOTAL SHEETS	SHEET NO.
55	99 (1&2) WRS-1	WILL	227	44
STA. 45+00		TO STA.		55+00
FED. ROAD DIST. NO. 1		ILLINOIS FED. AID PROJECT		PLN-12 OF 12



EXISTING CONDITION



PROPOSED CONDITION



REVISIONS	
NAME	DATE

ILLINOIS DEPARTMENT OF TRANSPORTATION
 FAI ROUTE 55
 US 30 (PLAINFIELD ROAD) TO 143RD STREET
 EXISTING AND PROPOSED
 ROADWAY PLAN

SCALE: 1" = 50'
 DATE: 02-23-07

DRAWN BY: ALR
 CHECKED BY: DM

FINAL