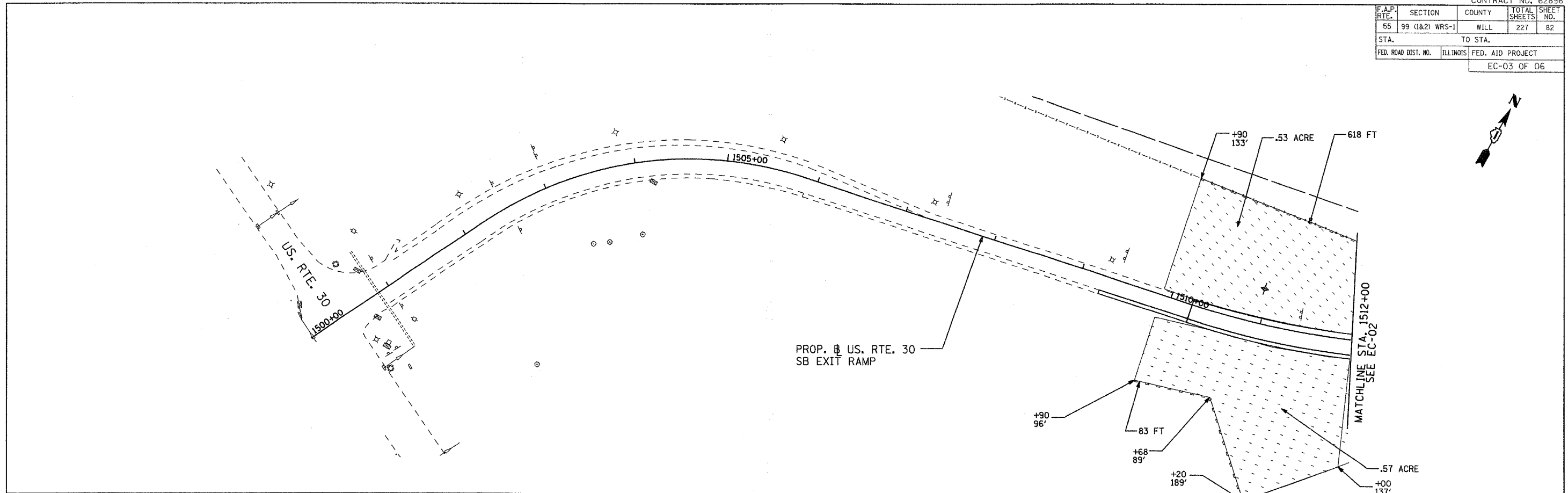
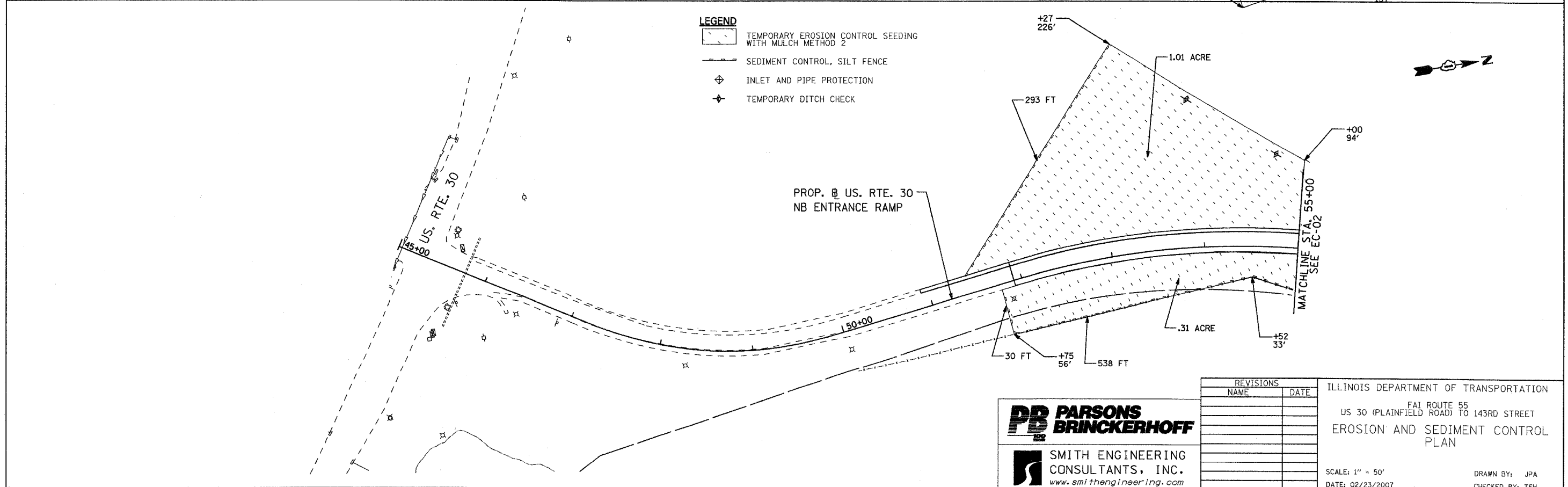


F.A.P. RTE.	SECTION	COUNTY	TOTAL SHEETS	SHEET NO.
55	99 (I&2) WRS-1	WILL	227	82
STA.		TO STA.		
FED. ROAD DIST. NO.	ILLINOIS	FED. AID PROJECT		
EC-03 OF 06				



- LEGEND**
- TEMPORARY EROSION CONTROL SEEDING WITH MULCH METHOD 2
 - SEDIMENT CONTROL, SILT FENCE
 - INLET AND PIPE PROTECTION
 - TEMPORARY DITCH CHECK



PARSONS BRINCKERHOFF

SMITH ENGINEERING CONSULTANTS, INC.
www.smithengineering.com

REVISIONS	
NAME	DATE

ILLINOIS DEPARTMENT OF TRANSPORTATION
 I-55 ROUTE 55
 US 30 (PLAINFIELD ROAD) TO 143RD STREET
 EROSION AND SEDIMENT CONTROL PLAN

SCALE: 1" = 50'
 DATE: 02/23/2007

DRAWN BY: JPA
 CHECKED BY: TEH