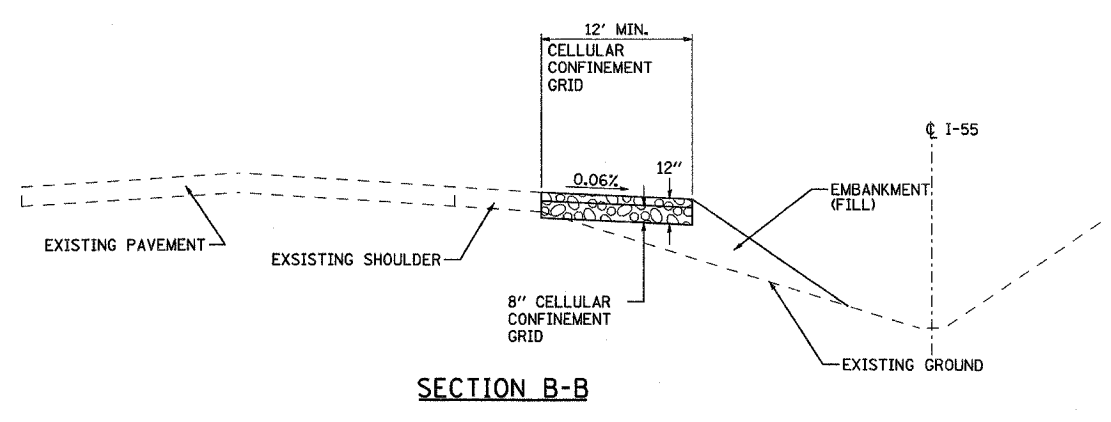
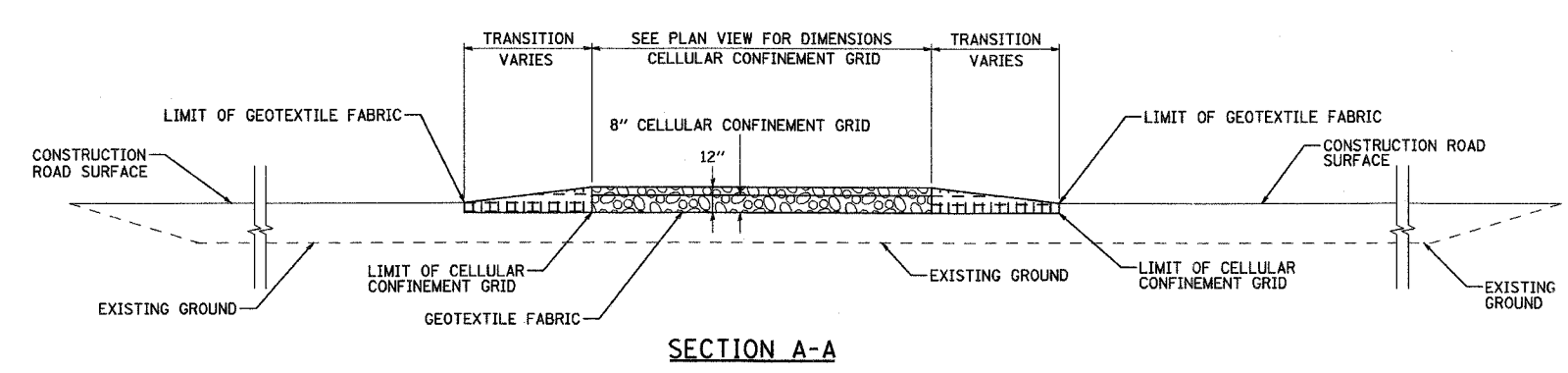
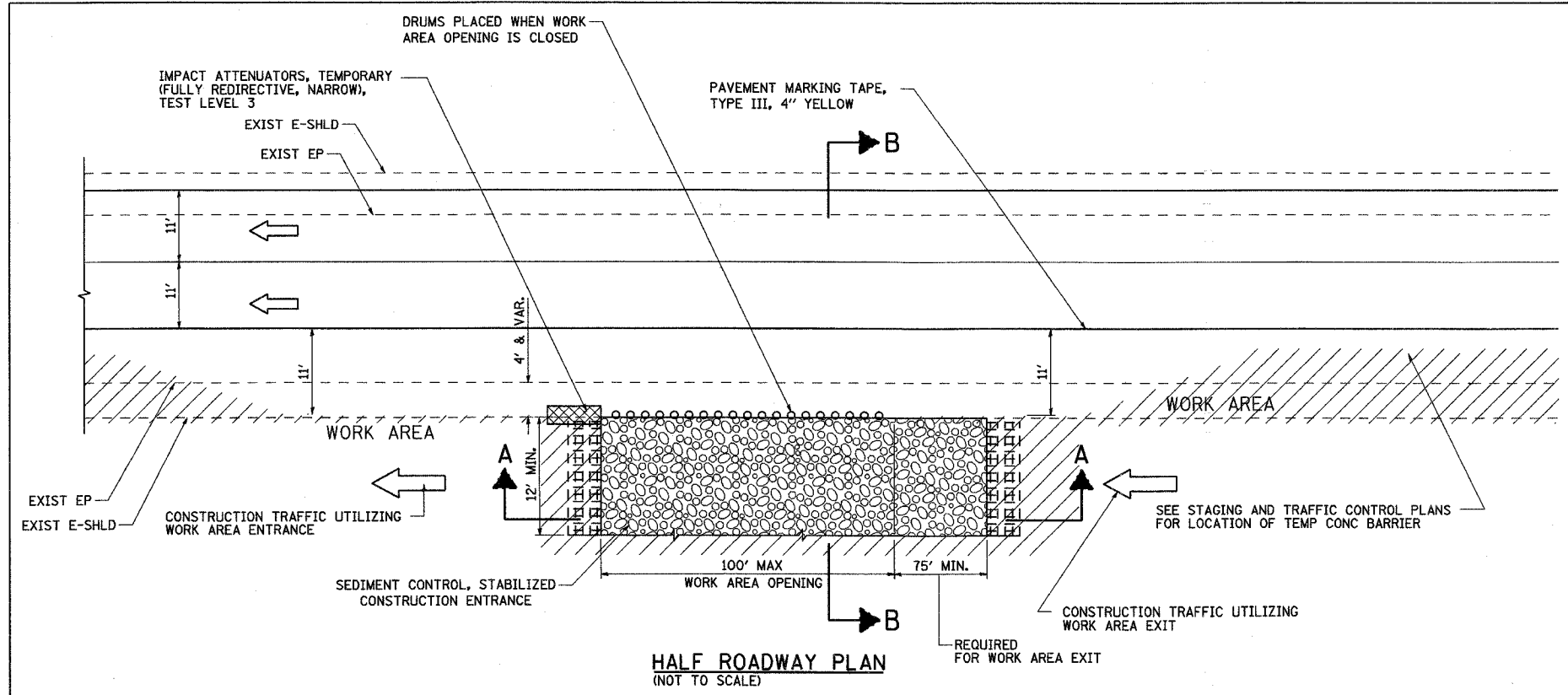
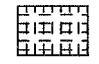

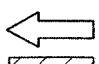




CONTRACT NO. 62896			
F.A.P. RTE.	SECTION	COUNTY	TOTAL SHEET NO.
55	99 (1&2) WRS-1	WILL.	227 83
STA.		TO STA.	
FED. ROAD DIST. NO.		ILLINOIS FED. AID PROJECT	
EC-04 OF 06			



LEGEND:

-  COURSE AGGREGATE CA-3
-  SEDIMENT CONTROL, STABILIZED CONSTRUCTION ENTRANCE
-  DIRECTION OF TRAFFIC
-  WORK AREA
-  IMPACT ATTENUATOR

NOTES:

1. THE EXISTING BITUMINOUS SHOULDER SHALL REMAIN IN THE PLACE UNTIL THE STABILIZED CONSTRUCTION ENTRANCE IS REMOVED.
2. EXISTING DITCH DRAINAGE TO BE MAINTAINED.
3. THE COST OF ANY COURSE AGGREGATE CA-3 USED FOR TRANSITION FROM THE CONSTRUCTION ROAD TO THE STABILIZED CONSTRUCTION ENTRANCE WILL NOT BE PAID FOR SEPARATELY, BUT SHALL BE INCLUDED IN THE UNIT PRICE BID FOR "SEDIMENT CONTROL, STABILIZED CONSTRUCTION ENTRANCE".
4. SEE STAGING AND TRAFFIC CONTROL DETAIL FOR WORK AREA DRIVEWAY ENTRANCE/EXIT.
5. THE SEDIMENT CONTROL, STABILIZED CONSTRUCTION ENTRANCE DIMENSIONS SHALL BE APPROVED BY THE ENGINEER.

PD PARSONS BRINCKERHOFF
 **SMITH ENGINEERING CONSULTANTS, INC.**
www.smithengineering.com

REVISIONS	
NAME	DATE

ILLINOIS DEPARTMENT OF TRANSPORTATION
FAI ROUTE 55
US 30 (PLAINFIELD ROAD) TO 143RD STREET
**EROSION AND SEDIMENT CONTROL
DETAIL - STABILIZED CONSTRUCTION
ENTRANCE**
SCALE: 1" = 50'
DATE: 02/23/2007
DRAWN BY: JPA
CHECKED BY: TEH

FINAL