

PART OF NE 1/4 OF SECTION 1, T38N, R11E, OF THE 3RD PM, DU PAGE, ILLINOIS

CONTRACT NO. 62911

374+17.62 / 105.05' RT. 16095	374+36.62 / 98.05' RT. 16096	375+32.41 / 101.66' RT. 16098	375+42.62 / 102.05' RT. 16097	376+90.31 / 98.95' LT. 23326	377+15.00 / 99.95' LT. 23327	377+47.38 / 96.86' RT. 16108
TIE DISTANCE DESCRIPTION	TIE DISTANCE DESCRIPTION	TIE DISTANCE DESCRIPTION	TIE DISTANCE DESCRIPTION	TIE DISTANCE DESCRIPTION	TIE DISTANCE DESCRIPTION	TIE DISTANCE DESCRIPTION
T1 51.32' 964 (DRIVEWAY)	T1 67.89' 964 (DRIVEWAY)	T1 38.26' 959 (SHED)	T1 10.60' 959 (SHED)	T1 33.49' 951 (S. FACE)	T1 31.70' 950	T1 23.45' 951
T2 44.88' 956	T2 50.08' 956	T2 29.90' 956 (SHED)	T2 23.72' 956 (SHED)	T2 15.79' 950	T2 12.84' 951	T2 109.85' 951
T3 28.77' 951	T3 8.63' 951	T3 51.23' 951 (W. FACE 24')	T3 41.01' 951 (W. FACE 24')	T3 15.45' 951 (S. FACE)	T3 31.43' 962	T3 14.48' 951
378+80.00 / 99.95' LT. 23323	379+07.77 / 114.95' LT. 16120	379+67.78 / 109.95' LT. 16122	379+90.00 / 95.95' LT. 23328	380+16.03 / 90.05' RT. 15166	381+85.33 / 89.95' LT. 15201	383+33.40 / 83.05' RT. 16117
TIE DISTANCE DESCRIPTION	TIE DISTANCE DESCRIPTION	TIE DISTANCE DESCRIPTION	TIE DISTANCE DESCRIPTION	TIE DISTANCE DESCRIPTION	TIE DISTANCE DESCRIPTION	TIE DISTANCE DESCRIPTION
T1 27.23' 972	T1 48.91' 972	T1 4.83' 951	T1 26.08' 951	T1 50.30' 951 (N. FACE 8')	T1 19.88' FND IP	T1 19.23' 951
T2 38.62' 958	T2 49.20' 958	T2 7.50' 962	T2 24.75' 962	T2 26.85' 951 (N. FACE 8')	T2 24.72' 962	T2 2.92' 951
T3 15.73' 951	T3 28.37' 951	T3 18.92' 951	T3 11.81' 951	T3 28.30' 951 (W. FACE 12')	T3 97.03' 959	T3 7.30' 951

F.A.P. RTE	SECTION	COUNTY	TOTAL SHEET	SHEET NO.
311	9 Y-N-2	COOK/DUPAGE	39	19
STA. 93+00 TO STA. 100+13				
FED. ROAD DIST. NO. 1 ILLINOIS FED. AID PROJECT				

LEGEND

EXISTING CENTERLINE
EXISTING RIGHT OF WAY LINE
EXISTING PERPETUAL EASEMENT LINE
PROPOSED CENTERLINE
PROPOSED RIGHT OF WAY LINE
PROPOSED TEMPORARY EASEMENT LINE
PROPOSED PERMANENT EASEMENT LINE
SECTION LINE
QUARTER SECTION LINE
QUARTER QUARTER SECTION LINE
PLATTED LOT LINE
PROPERTY (DEED) LINE
APPARENT PROPERTY LINE
ACCESS CONTROL LINE
MEASURED OR COMPUTED DIMENSION RECORD DATA
FOUND IRON PIPE OR IRON ROD SET 3/8 INCH IRON ROD PERMANENT SURVEY MONUMENT, I.D.O.T. STD. 2135 (TO BE SET BY OTHERS)
CUT CROSS FOUND OR SET
SAME OWNERSHIP
FENCE LINE
SIGN

BEARINGS SHOWN HEREON REFERENCE THE ILLINOIS STATE PLANE COORDINATE SYSTEM, EAST ZONE, NORTH AMERICAN DATUM OF 1983 (1986 ADJUSTMENT). ALL MEASURED AND CALCULATED VALUES ARE "GROUND."
COMBINED SCALE FACTOR: (GROUND TO GRID) = 0.99996669755657 (GRID TO GROUND) = 1.000033303331556285

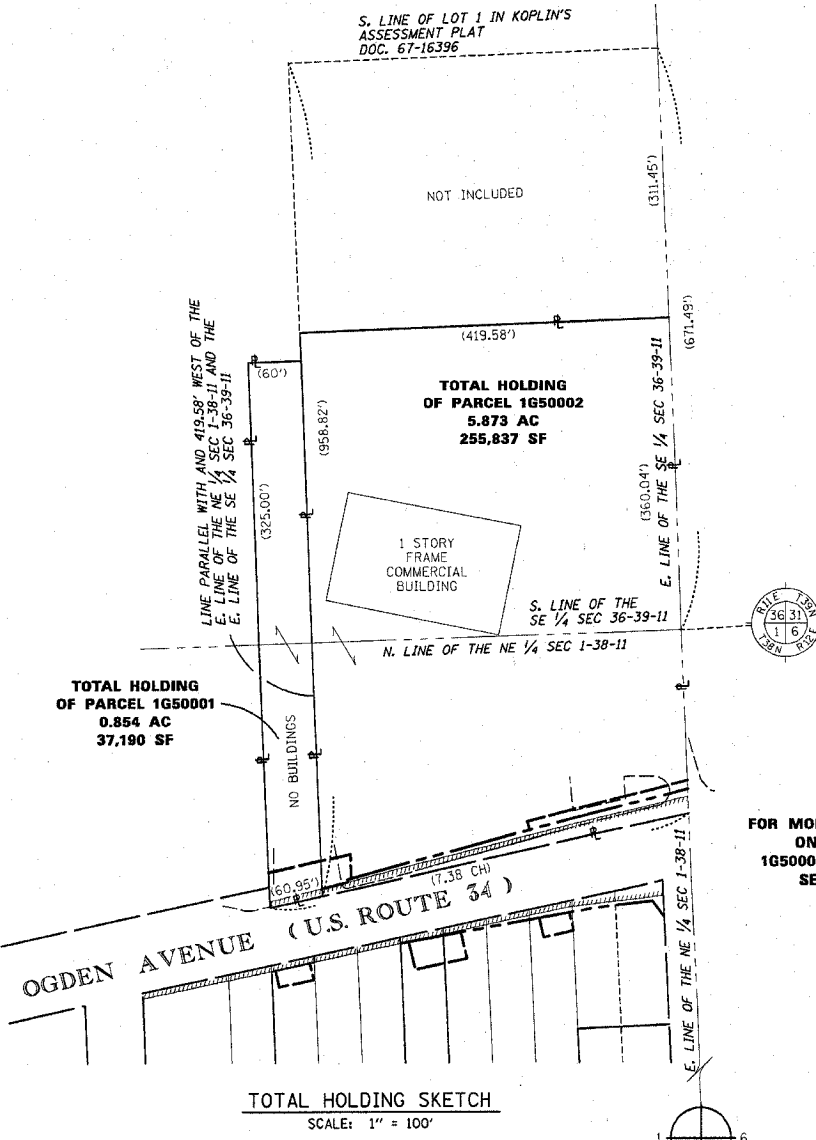
DESCRIPTION LEGEND

950 - MAG NAIL IN UTILITY POLE	960 - IRON ROD WITH YELLOW PLASTIC CAP	970 - "4" ON LEG OF ELECTRIC TRANSMISSION TOWER
951 - MAG NAIL IN TREE	961 - "4" ON METAL FENCE POST	971 - CORNER OF LARGE SIGN
952 - "4" IN POLE FOUNDATION, BASE, OR BOLT	962 - MAG NAIL IN FENCE POST	972 - FENCE CORNER
953 - CENTER TOP SPINDLE BOLT OF FIRE HYDRANT	963 - "4" ON MANHOLE, CATCH BASIN, OR VAULT RIM	973 - MAG NAIL ON WOOD GUARDRAIL POST
954 - "4" ON CURB	964 - MAG NAIL IN PAVEMENT	974 - "4" ON CONC. SIGN FOUNDATION
955 - "4" ON WALK / CONCRETE PAD	965 - "4" ON CONCRETE RETAINING WALL	975 - MAG NAIL ON STUMP
956 - NW CORNER OF BUILDING	966 - "4" ON CONCRETE HEADWALL	976 - "4" ON BUILDING FACE
957 - NE CORNER OF BUILDING	967 - MAG NAIL IN LIGHT POLE	977 - "4" ON RAILROAD SPIKE
958 - SE CORNER OF BUILDING	968 - MAG NAIL IN WOOD SIGN POST	978 - CORNER OF PLANTER
959 - SW CORNER OF BUILDING	969 - MAG NAIL IN RAILROAD TIE	979 - CORNER OF COLUMN

COORDINATE TABLE
GROUND COORDINATES
TO CONVERT TO STATE PLANE (GRID),
MULTIPLY BY COMBINED SCALE FACTOR: 0.99996669755657

OGDEN AVENUE			SECTION CORNERS		
STATION	OFFSET	POINT	NORTH	EAST	POINT
93+00.00	0.00	438	1876406.687	1096749.359	1973 1876796.410 1097424.846
95+08.46	66.11	509	1876386.804	1096967.146	1964 1874143.114 1097529.202
95+08.46	46.11	508	1876406.339	1096962.859	
95+20.09	-33.89	497	1876486.972	1096957.065	
95+25.85	-66.14	498	1876519.706	1096955.778	
95+48.46	66.11	510	1876395.380	1097006.216	
95+48.46	46.11	507	1876414.915	1097001.929	
95+79.79	-26.89	431	1876492.933	1097016.877	
95+81.32	-35.48	502	1876501.650	1097016.534	
95+86.71	-65.66	501	1876532.284	1097015.329	
96+11.29	-36.25	503	1876508.833	1097045.639	
96+11.37	-39.10	443	1876511.631	1097045.107	
96+16.37	-39.30	499	1876512.896	1097049.944	
96+21.03	-65.39	500	1876539.376	1097048.902	
96+53.98	46.11	12024	1876437.536	1097104.994	
96+55.23	39.11	411	1876444.641	1097104.715	
96+63.73	79.42	513	1876407.095	1097121.655	
96+63.73	46.42	511	1876439.328	1097114.581	
96+98.03	79.42	521	1876414.450	1097155.161	
97+03.70	47.67	520	1876446.677	1097153.894	
97+05.23	39.11	410	1876455.361	1097153.552	
97+23.73	79.42	514	1876419.959	1097180.260	
97+23.73	48.29	512	1876450.358	1097173.588	
98+14.13	51.12	516	1876466.976	1097262.489	
98+14.13	74.12	517	1876444.511	1097267.420	
98+25.00	-57.60	505	1876575.497	1097249.804	
98+25.00	-47.59	506	1876565.722	1097251.950	
98+49.13	52.22	515	1876473.410	1097296.910	
98+49.13	74.12	518	1876452.014	1097301.607	
98+77.40	53.10	453	1876478.608	1097324.717	
99+44.40	59.50	454	1876486.721	1097391.532	
99+53.26	80.78	456	1876467.837	1097404.743	
99+60.70	39.11	401	1876510.129	1097403.080	
100+06.01	-26.89	427	1876584.309	1097433.188	
100+11.03	-54.98	447	1876612.824	1097432.066	
100+12.83	-65.06	504	1876623.055	1097431.664	
106+00.00	-0.00	437	1876685.388	1098019.133	

- T1 THESE STAKES REFERENCE FOUND OR SET MONUMENTATION. SET 3/8 INCH IRON ROD FLUSH WITH GROUND. IDENTIFIED BY COLORED PLASTIC CAP BEARING SURVEYORS REGISTRATION NUMBER.
- T2
- T3
- BT1 THESE STAKES, IN CULTIVATED AREAS, REFERENCE FOUND OR SET MONUMENTATION. BURIED 3/8 INCH IRON ROD 20 INCHES BELOW GROUND SURFACE. IDENTIFIED BY COLORED PLASTIC CAP BEARING SURVEYORS REGISTRATION NUMBER.
- BT2
- BT3
- M STAKING OF PROPOSED RIGHT OF WAY. SET DIVISION OF HIGHWAYS SURVEY MARKER TO MONUMENT THE POSITION SHOWN. IDENTIFIED BY INSCRIPTION DATA AND SURVEYORS REGISTRATION NUMBER.
- M STAKING OF PROPOSED RIGHT OF WAY IN CULTIVATED AREAS. BURIED 3/8 INCH IRON ROD 20 INCHES BELOW GROUND SURFACE TO MARK FUTURE SURVEY MARKER POSITION. IDENTIFIED BY COLORED PLASTIC CAP AND SURVEYORS REGISTRATION NUMBER.
- U STAKING OF PROPOSED RIGHT OF WAY IN CLOSE PROXIMITY TO UNDERGROUND UTILITIES. SET DIVISION OF HIGHWAYS SURVEY MARKER ON 3/8 INCH IRON ROD (BETWEEN 6 INCHES AND 12 INCHES IN LENGTH) TO MONUMENT THE POSITION SHOWN. IDENTIFIED BY INSCRIPTION DATA AND SURVEYORS REGISTRATION NUMBER.



FOR MORE INFORMATION ON PARCELS 1050001 AND 1050002 SEE SHEET 2

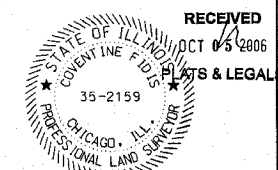
STATE OF ILLINOIS)
COUNTY OF COOK) S.S.

THIS IS TO CERTIFY THAT I, COVENTINE FIDIS, AN ILLINOIS PROFESSIONAL LAND SURVEYOR, HAVE SURVEYED THE PLAT OF HIGHWAYS SHOWN HEREON IN SECTION 1, TOWNSHIP 38 NORTH, RANGE 11 EAST OF THE THIRD PRINCIPAL MERIDIAN, IN DU PAGE COUNTY, THAT THE PLAT CORRECTLY REPRESENTS SAID SURVEY, THAT ALL MONUMENTS FOUND AND ESTABLISHED ARE OF PERMANENT QUALITY AND OCCUPY THE POSITIONS SHOWN THEREON AND THAT THE MONUMENTS ARE SUFFICIENT TO ENABLE THE SURVEY TO BE RETRACED. MADE FOR THE DEPARTMENT OF TRANSPORTATION, STATE OF ILLINOIS.

DATED AT CHICAGO, ILLINOIS THIS 12TH DAY OF JULY, 2006.

COVENTINE FIDIS
ILLINOIS PROFESSIONAL LAND SURVEYOR NO. 2159
LICENSE EXPIRATION DATE 11/30/2006

THIS PROFESSIONAL SERVICE CONFORMS TO THE CURRENT ILLINOIS MINIMUM SURVEY STANDARDS.



SCANNED

PLAT OF HIGHWAYS
STATE OF ILLINOIS
DEPARTMENT OF TRANSPORTATION
F.A.P. 311
OGDEN AVENUE (U.S. ROUTE 34)

SECTION: AT COUNTY LINE ROAD DU PAGE COUNTY
STATION 93+00 JOB NO. R-91-009-05
SCALE: NONE TO STATION 100+13
SHEET 3

ASC
American Surveying Consultants
841 N. Galena Avenue / Dixon, IL 61021 / 815-288-6231
8604 W. Catalpa Avenue / Chicago, IL 60656 / 773-444-0800
Illinois Professional Design Firm No. 184-003192

BUREAU OF LAND ACQUISITION
201 WEST CENTER COURT
SCHAUMBURG, ILLINOIS 60196