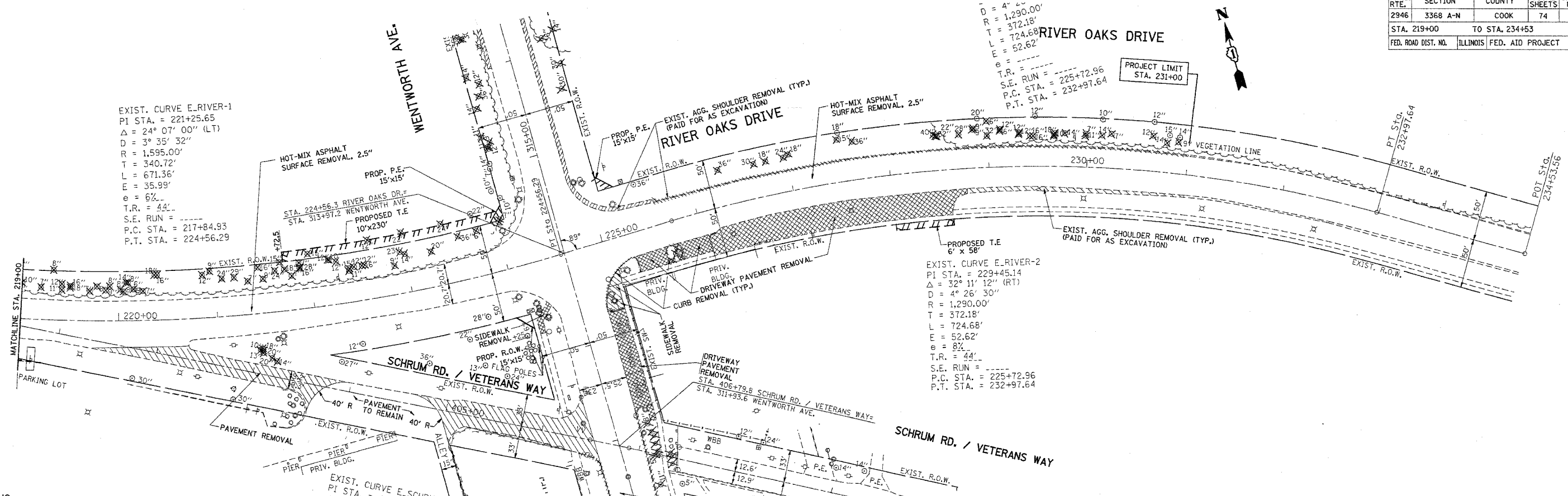


F.A.U. RTE.	SECTION	COUNTY	TOTAL SHEETS	SHEET NO.
2946	3368 A-N	COOK	74	15
STA. 219+00		TO STA. 234+53		
FED. ROAD DIST. NO.		ILLINOIS FED. AID PROJECT		

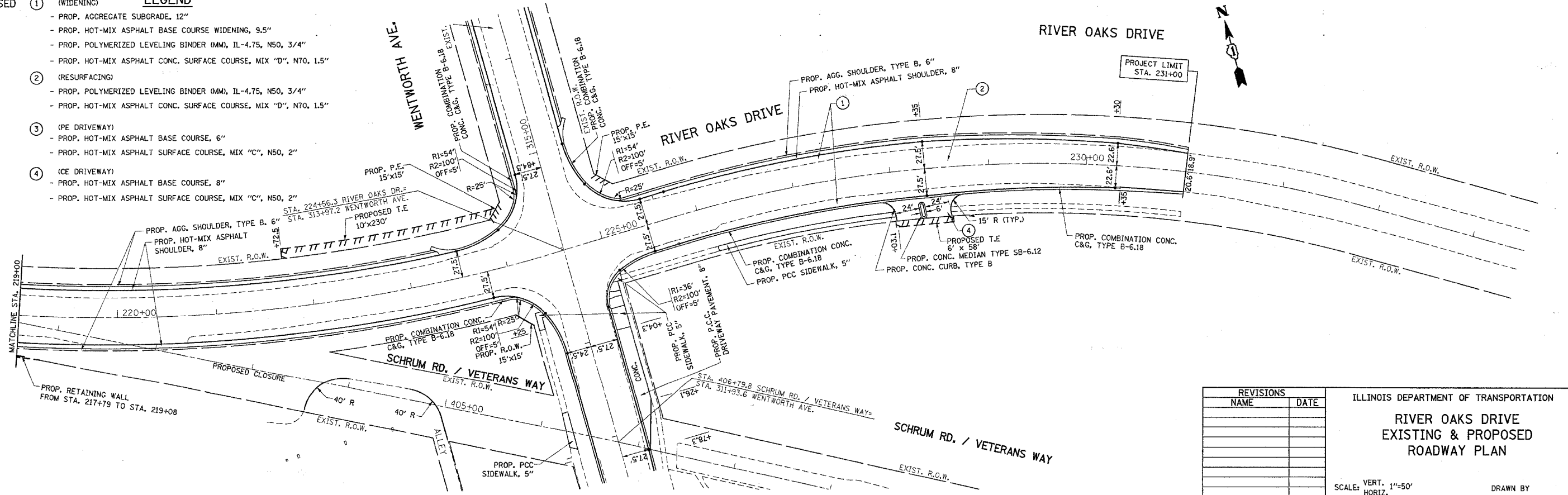
$D = 4' 4"$
 $R = 1,290.00'$
 $T = 372.18'$
 $L = 724.68'$
 $E = 52.62'$
 $T.R. = 44^\circ$
 $S.E. RUN = 225+72.96$
 $P.C. STA. = 225+97.64$
 $P.T. STA. = 232+97.64$



EXISTING

PROPOSED **LEGEND**

- ① (WIDENING)
 - PROP. AGGREGATE SUBGRADE, 12"
 - PROP. HOT-MIX ASPHALT BASE COURSE WIDENING, 9.5"
 - PROP. POLYMERIZED LEVELING BINDER (MM), IL-4.75, N50, 3/4"
 - PROP. HOT-MIX ASPHALT CONC. SURFACE COURSE, MIX "D", N70, 1.5"
- ② (RESURFACING)
 - PROP. POLYMERIZED LEVELING BINDER (MM), IL-4.75, N50, 3/4"
 - PROP. HOT-MIX ASPHALT CONC. SURFACE COURSE, MIX "D", N70, 1.5"
- ③ (PE DRIVEWAY)
 - PROP. HOT-MIX ASPHALT BASE COURSE, 6"
 - PROP. HOT-MIX ASPHALT SURFACE COURSE, MIX "C", N50, 2"
- ④ (ICE DRIVEWAY)
 - PROP. HOT-MIX ASPHALT BASE COURSE, 8"
 - PROP. HOT-MIX ASPHALT SURFACE COURSE, MIX "C", N50, 2"



REVISIONS	
NAME	DATE

ILLINOIS DEPARTMENT OF TRANSPORTATION

**RIVER OAKS DRIVE
EXISTING & PROPOSED
ROADWAY PLAN**

SCALE: VERT. 1"=50'
HORIZ. 1"=50'

DATE 3/27/2007

DRAWN BY
CHECKED BY

PLOT DATE = 3/27/2007
FILE NAME = c:\projects\62915\ah_rdy\bb.dgn
USER NAME = llschert