

| F.A.U. RTE. | SECTION | COUNTY | TOTAL SHEETS | SHEET NO. |
|---------------------|----------|------------------|--------------|-----------|
| 2946 | 3368 A-N | COOK | 74 | 34 |
| STA. | TO STA. | | | |
| FED. ROAD DIST. NO. | ILLINOIS | FED. AID PROJECT | | |

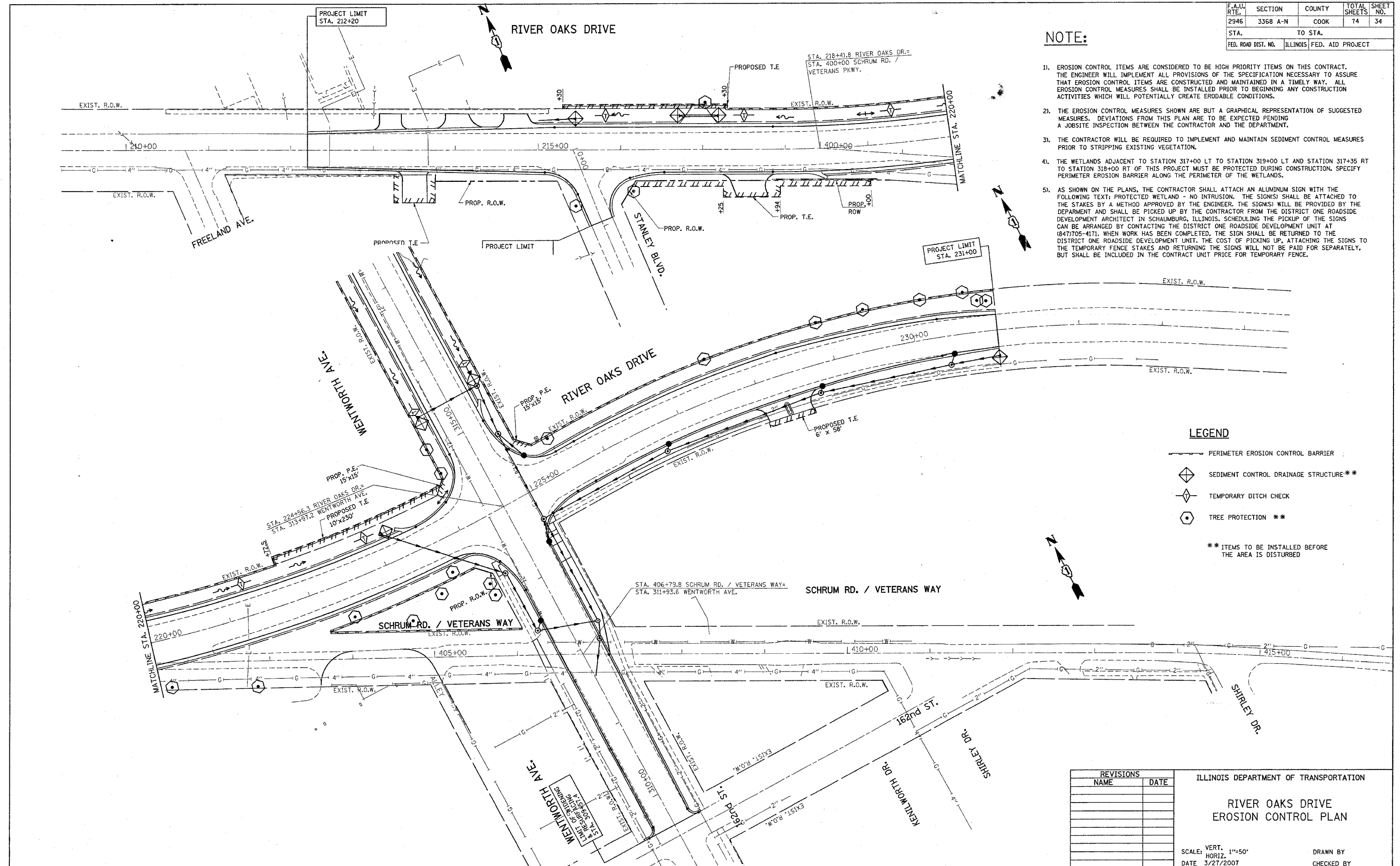
NOTE:

1. EROSION CONTROL ITEMS ARE CONSIDERED TO BE HIGH PRIORITY ITEMS ON THIS CONTRACT. THE ENGINEER WILL IMPLEMENT ALL PROVISIONS OF THE SPECIFICATION NECESSARY TO ASSURE THAT EROSION CONTROL ITEMS ARE CONSTRUCTED AND MAINTAINED IN A TIMELY MANNER. ALL EROSION CONTROL MEASURES SHALL BE INSTALLED PRIOR TO BEGINNING ANY CONSTRUCTION ACTIVITIES WHICH WILL POTENTIALLY CREATE ERODABLE CONDITIONS.
2. THE EROSION CONTROL MEASURES SHOWN ARE BUT A GRAPHICAL REPRESENTATION OF SUGGESTED MEASURES. DEVIATIONS FROM THIS PLAN ARE TO BE EXPECTED PENDING A JOBSITE INSPECTION BETWEEN THE CONTRACTOR AND THE DEPARTMENT.
3. THE CONTRACTOR WILL BE REQUIRED TO IMPLEMENT AND MAINTAIN SEDIMENT CONTROL MEASURES PRIOR TO STRIPPING EXISTING VEGETATION.
4. THE WETLANDS ADJACENT TO STATION 317+00 LT TO STATION 319+00 LT AND STATION 317+35 RT TO STATION 318+00 RT OF THIS PROJECT MUST BE PROTECTED DURING CONSTRUCTION. SPECIFY PERIMETER EROSION BARRIER ALONG THE PERIMETER OF THE WETLANDS.
5. AS SHOWN ON THE PLANS, THE CONTRACTOR SHALL ATTACH AN ALUMINUM SIGN WITH THE FOLLOWING TEXT: PROTECTED WETLAND - NO INTRUSION. THE SIGN(S) SHALL BE ATTACHED TO THE STAKES BY A METHOD APPROVED BY THE ENGINEER. THE SIGN(S) WILL BE PROVIDED BY THE DEPARTMENT AND SHALL BE PICKED UP BY THE CONTRACTOR FROM THE DISTRICT ONE ROADSIDE DEVELOPMENT ARCHITECT IN SCHAUMBURG, ILLINOIS. SCHEDULING THE PICKUP OF THE SIGNS CAN BE ARRANGED BY CONTACTING THE DISTRICT ONE ROADSIDE DEVELOPMENT UNIT AT (847)705-4171. WHEN WORK HAS BEEN COMPLETED, THE SIGN SHALL BE RETURNED TO THE DISTRICT ONE ROADSIDE DEVELOPMENT UNIT. THE COST OF PICKING UP, ATTACHING THE SIGNS TO THE TEMPORARY FENCE STAKES AND RETURNING THE SIGNS WILL NOT BE PAID FOR SEPARATELY, BUT SHALL BE INCLUDED IN THE CONTRACT UNIT PRICE FOR TEMPORARY FENCE.

LEGEND

- PERIMETER EROSION CONTROL BARRIER
- ◇ SEDIMENT CONTROL DRAINAGE STRUCTURE**
- ◇ TEMPORARY DITCH CHECK
- ◇ TREE PROTECTION **

** ITEMS TO BE INSTALLED BEFORE THE AREA IS DISTURBED



| REVISIONS | |
|-----------|------|
| NAME | DATE |
| | |
| | |
| | |
| | |
| | |
| | |
| | |
| | |
| | |
| | |

ILLINOIS DEPARTMENT OF TRANSPORTATION

**RIVER OAKS DRIVE
EROSION CONTROL PLAN**

SCALE: VERT. 1"=50'
HORIZ. 1"=50'
DATE 3/27/2007

DRAWN BY _____
CHECKED BY _____

3/27/2007
c:\projects\p101703\sh_erosion_bb.dgn
hszkr1