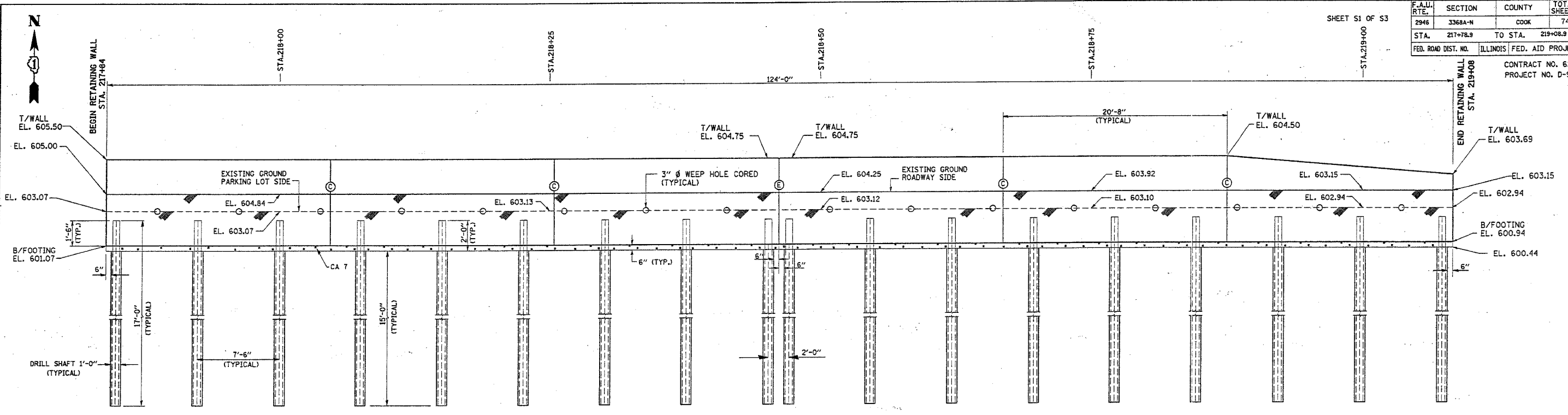
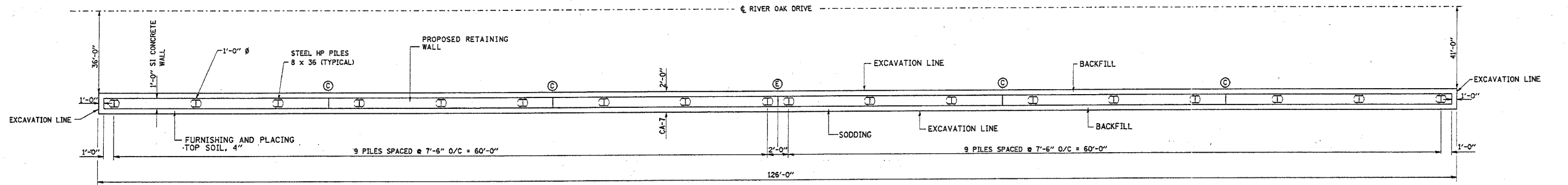


F.A.U. RTE.	SECTION	COUNTY	TOTAL SHEETS	SHEET NO.
2946	3368A-N	COOK	74	43
STA. 217+78.9	TO STA. 219+08.9			
FED. ROAD DIST. NO.	ILLINOIS FED. AID PROJECT			
	CONTRACT NO. 62915		PROJECT NO. D-91-129-05	

SHEET S1 OF S3



ELEVATION



PLAN

GENERAL NOTES:

- ELEVATIONS ARE IN FEET.
- DIMENSIONS ARE IN FEET - INCHES
- USE CLASS SI CONCRETE, EXCEPT OTHERWISE NOTED.
- EXPOSED CONCRETE EDGES SHALL BE CHAMFERED 3/4"
- MINIMUM CLEAR COVER 1/2"
- REINFORCEMENT BARS SHALL CONFORM TO THE REQUIREMENTS OF AASHTO M 31, M 32, GRADE 60.
- REINFORCEMENT BARS DESIGNATED (E) SHALL BE EPOXY COATED.
- BACK FILLING SHALL BE PERFORMED IN ACCORDANCE WITH THE PROVISIONS OF ARTICLE 502.10 OF STANDARD SPECIFICATIONS FOR ROAD AND BRIDGE CONSTRUCTION.
- 3" Ø WEEP HOLES ARE TO BE CORED.
- DO NOT SCALE DIMENSIONS.
- PLAN DIMENSIONS AND DETAILS HAVE BEEN SURVEYED AS SHOWN AND ARE SUBJECT TO NOMINAL CONSTRUCTION VARIATIONS. IT SHALL BE THE CONTRACTOR'S RESPONSIBILITY TO VERIFY SUCH DIMENSIONS AND DETAILS IN THE FIELD AND MAKE NECESSARY APPROVED ADJUSTMENTS PRIOR TO CONSTRUCTION OR ORDERING OF MATERIALS. SUCH VARIATIONS SHALL NOT BE CAUSE FOR ADDITIONAL COMPENSATION FOR A CHANGE IN THE SCOPE OF WORK; HOWEVER, THE CONTRACTOR WILL BE PAID FOR THE QUANTITY ACTUALLY FURNISHED AT THE UNIT PRICE FOR THE WORK.
- SOLDIER PILES SHALL BE SHOP PAINTED WITH INORGANIC ZINC-RICH PRIMER ACCORDING TO THE SPECIAL PROVISIONS FOR "CLEANING AND PAINTING NEW METAL STRUCTURES". THE COST OF THIS WORK IS INCLUDED WITH PAY ITEM "FURNISHING SOLDIER PILES (HP SECTION)"

TOTAL BILL OF MATERIALS

ITEM	UNIT	QUANTITY
CONCRETE STRUCTURES	CU. YDS.	17.1
REINFORCEMENT BARS, EPOXY COATED	LBS	1470
FURNISHING SOLDIER PILES (HP SECTION)	FOOT	306
DRILLING AND SETTING SOLDIER PILES (IN SOIL)	CU. FT.	212
AGGREGATE BACK FILL, CA-7,	CU. YDS.	5
CONCRETE CLASS DS **	CU. YDS.	8
STRUCTURE EXCAVATION	CU. YDS.	19
FURNISHING AND PLACING TOP SOIL, 4"	SQ. YDS.	14
SODDING	SQ. YDS.	14
WEEP HOLES CORED	EACH	16

** FOR INFORMATION ONLY, COST INCLUDED IN DRILLING AND SETTING SOLDIER PILES.

DESIGN SPECIFICATIONS:

- 1996 AASHTO STANDARD SPECIFICATIONS FOR HIGHWAY BRIDGES, INCLUDING 1997, 1998, 1999 & 2000 INTERIMS
- STANDARD SPECIFICATIONS FOR ROAD AND BRIDGE CONSTRUCTION.

LOADING:

EQUIVALENT FLUID LATERAL SOIL PRESSURE = 40 psf

DESIGN STRESSES:

f'c = 3500 psi
fy = 60,000 psi

REVISIONS	
NAME	DATE

ILLINOIS DEPARTMENT OF TRANSPORTATION
**WENTWORTH AVENUE
 AT RIVER OAK DRIVE
 RETAINING WALL
 PLAN AND ELEVATION
 S.N. 016-W982**
 SCALE: VERT. _____
 HORIZ. _____
 DATE: JANUARY, 2007
 DRAWN BY: MVT
 CHECKED BY: RSS

1/24/2007
 c:\projects\river_oak_dr_e.dgn
 DISTRICT ONE - DESIGN
 PLAN PREPARATION ENGINEER JOSE A. DOMINGUEZ / RUSS SINHA (847) 705-4209 / ATTENTION MARK V. TINIAKOS (847) 705-4266