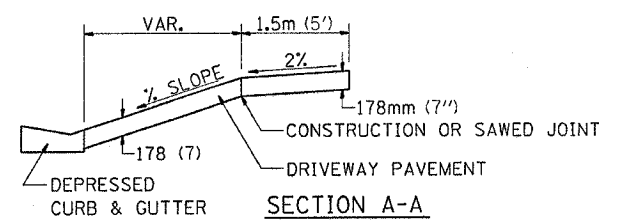
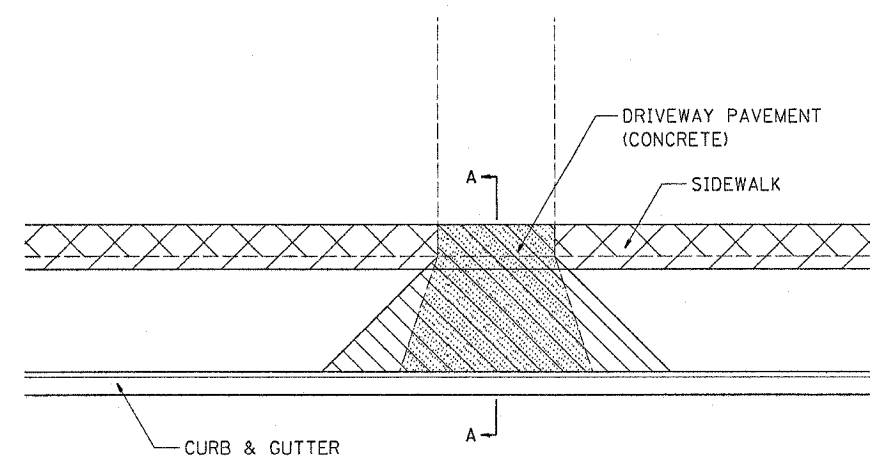


SIDEWALK AND DRIVEWAY PAVEMENT PAY AREAS

- PAY FOR AS
- SIDEWALK REMOVAL
 - DRIVEWAY PAVEMENT REMOVAL
 - PCC SIDEWALK 127 (5)
 - PCC DRIVEWAY PAVEMENT 178 (7)



FOR DETAILS ON DIMENSIONS AND GRADES, SEE DISTRICT STANDARD 25.1 OR PLANS.

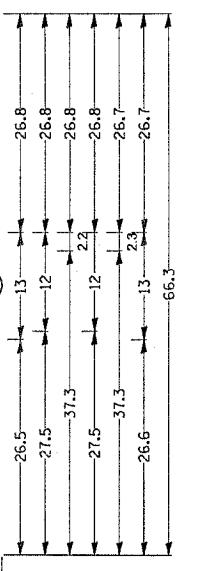
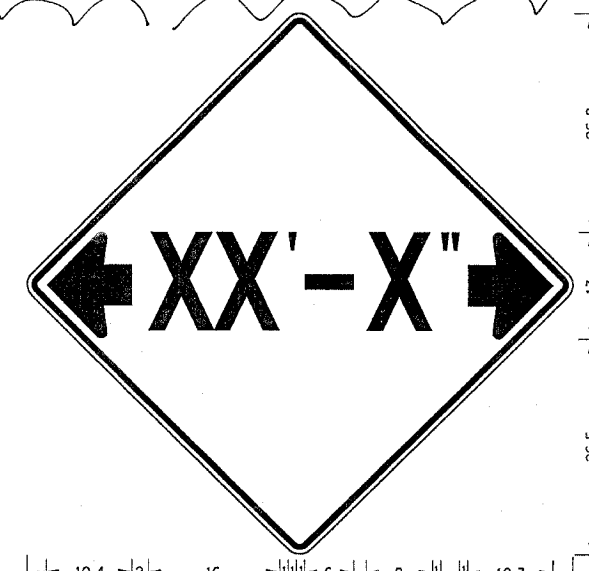
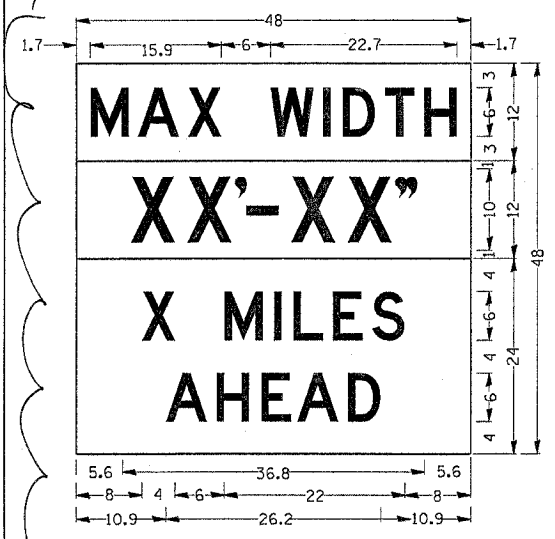
ALL DIMENSIONS ARE IN MILLIMETERS (INCHES) UNLESS OTHERWISE NOTED.

SIDEWALK AND DRIVEWAY PAVEMENT PAY AREAS 35.4

REVISED 10-15-04

INFORMATIONAL WARNING SIGN (FOR NARROW TRAVEL LANES)

F.A. PI	SECTION	COUNTY	TOTAL SHEETS	SHEET NO.
734	(4MPT)R	WINNEBAGO	355	271
STA.	TO STA.			
FED. ROAD DIST. NO.	ILLINOIS	FED. AID PROJECT		



W12-1103 (Width is 8D);
No border, Black on White;
"MAX WIDTH" D;
No border, Black on Orange;
"XX'-XX'" D;
No border, Black on White;
"X MILES" D; "AHEAD" D;

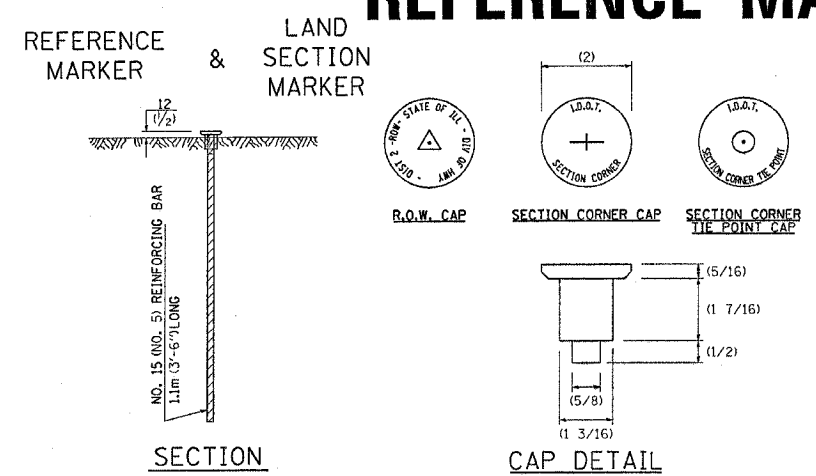
ALL DIMENSIONS ARE IN INCHES UNLESS OTHERWISE NOTED.

REVISED 5-21-07

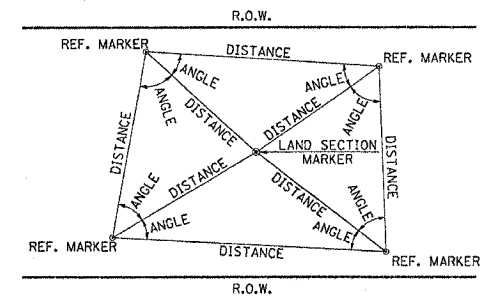
NOTES
W12-1102 - Horizontal Clearance Sign 48.0" across sides, 1.9" Radius, 0.8" Border, 0.5" Indent, Black on Orange; Standard Arrow Custom 10.4" X 8.1" 180° Black 11 Inch D Series Lettering; Standard Arrow Custom 10.4" X 8.1" 0°

INFORMATIONAL WARNING SIGN (FOR NARROW TRAVEL LANES) 39.4

LAND SECTION & REFERENCE MARKERS



METHOD OF REFERENCING MARKERS



- USE INSTRUMENT TIES TO NEARBY LAND-MARKS (STEEPLES, TOWERS, SILOS, ETC...)
- IN CULTIVATED FIELDS, SET 600(2') OR MORE BELOW GROUND SURFACE.
- IN FENCE LINE OR PROTECTED AREA SET TOP AT GROUND LEVEL.

METHOD OF REFERENCING POINTS

REFERENCE MARKERS SHALL BE USED TO TIE IN PERMANENT LAND SECTION AND 1/4 SECTION CORNERS. WHERE LAND SECTION MARKERS FALL IN THE SHOULDERS OR GRAVEL SURFACES, THE TOP OF THE BAR SHALL BE KEPT 75(3) BELOW THE SURFACE. LAND SECTION MARKERS LOCATED IN TRAFFIC LANES SHALL NOT BE REPLACED.

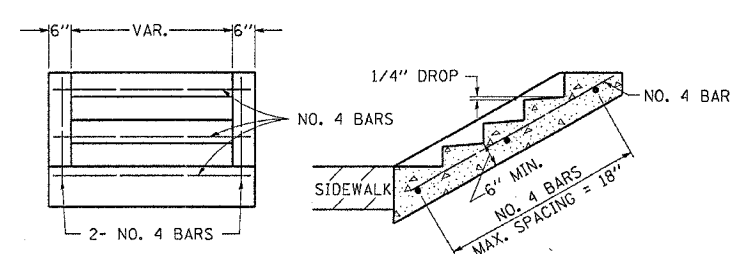
METAL CAPS SHALL BE PLACED ON TOP OF THE REINFORCEMENT BAR. THERE ARE 3 TYPES OF CAPS, ONE FOR THE RIGHT-OF-WAY CORNERS, ONE FOR THE SECTION CORNERS AND ONE FOR THE SECTION CORNER TIE POINTS. THE CAPS WILL BE SUPPLIED BY IDOT, CALL CHIP CORDELL (815) 284-5370 A MINIMUM OF ONE WEEK BEFORE THE CAPS ARE NEEDED

ALL DIMENSIONS ARE IN MILLIMETERS (INCHES) UNLESS OTHERWISE NOTED.

LAND SECTION & REFERENCE MARKERS 63.4

REVISED 4-22-05

DETAIL OF CONCRETE STEPS



SLOPE	TREAD	RISER
1:2	12"	6"
1:3	15"	5"
1:4	17"	4 1/4"

WHERE SLOPES FALL BETWEEN THOSE SHOWN IN THE TABLE ABOVE, THE STAIR RAIL SHOULD FIT THE SLOPE AND THE TREAD IN INCHES X THE RISER IN INCHES SHOULD BE BETWEEN 72 AND 78.

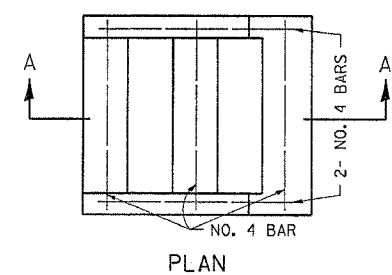
EXAMPLE:

FOR A 1:4 SLOPE USE $y = \text{RISER HEIGHT } 4y^2 = 75"$.
SOLVING $y^2 = \frac{75}{4}$, $y = 4.3"$ (USE 4 1/4" FOR CONVENIENCE.)
TREAD WOULD THEN BE $4 \times 4 1/4" = 17"$

COST OF REINFORCEMENT BARS SHALL BE PAID FOR AT THE CONTRACT UNIT PRICE PER LBS REINFORCEMENT BARS.

CLASS SI CONCRETE SHALL BE USED THROUGHOUT, WHICH SHALL BE PAID FOR AT THE CONTRACT UNIT PRICE PER CUBIC YARD FOR CLASS SI CONCRETE STEPS.

ALL DIMENSIONS ARE IN INCHES UNLESS OTHERWISE NOTED.



DETAIL OF CONCRETE STEPS 71.4

REVISED 3-3-05

REVISED PER 5/30/07 ADDENDUM

PLOT DATE = Tue May 22 10:56:07 2007
 FILE NAME = c:\p\projects\2007\16810\16810.dwg
 PLOT SCALE = 20.0000
 REFERENCE = #REF#