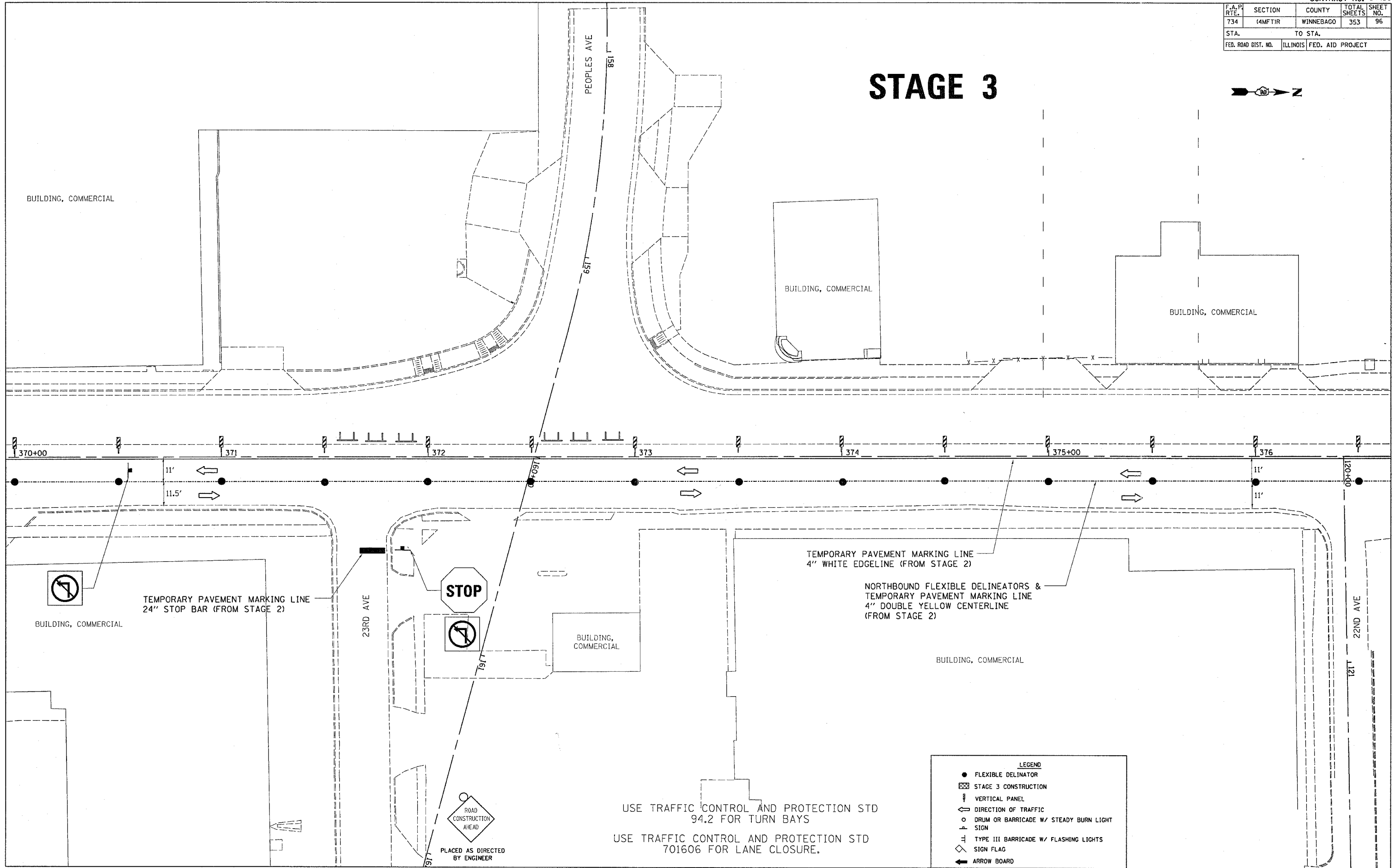


F.A.P. RTE.	SECTION	COUNTY	TOTAL SHEETS	SHEET NO.
734	4MFTIR	WINNEBAGO	353	96
STA.		TO STA.		
FED. ROAD DIST. NO.		ILLINOIS	FED. AID PROJECT	

STAGE 3



BUILDING, COMMERCIAL

BUILDING, COMMERCIAL

BUILDING, COMMERCIAL

BUILDING, COMMERCIAL

BUILDING, COMMERCIAL

BUILDING, COMMERCIAL

TEMPORARY PAVEMENT MARKING LINE
4" WHITE EDGELINE (FROM STAGE 2)

NORTHBOUND FLEXIBLE DELINEATORS &
TEMPORARY PAVEMENT MARKING LINE
4" DOUBLE YELLOW CENTERLINE
(FROM STAGE 2)

USE TRAFFIC CONTROL AND PROTECTION STD
94.2 FOR TURN BAYS
USE TRAFFIC CONTROL AND PROTECTION STD
701606 FOR LANE CLOSURE.

LEGEND

- FLEXIBLE DELINATOR
- ▨ STAGE 3 CONSTRUCTION
- ▬ VERTICAL PANEL
- ⇄ DIRECTION OF TRAFFIC
- ⊙ DRUM OR BARRICADE W/ STEADY BURN LIGHT SIGN
- ⊥ TYPE III BARRICADE W/ FLASHING LIGHTS
- ◇ SIGN FLAG
- ⇐ ARROW BOARD

PLOT DATE = Fri, Apr 27 16:38:42 2007
 FILE NAME = c:\p\proj\102189\102189.dwg
 USER NAME = g...
 USER NAME = g...