

F.A.P. RTE.	SECTION	COUNTY	TOTAL SHEETS	SHEET NO.
*	**	CARROLL	548	125

SEVEN HILLS RD

QUARRY ENTRANCE

PROP. CURVE 70340
 PI STA. = 37+06.3036
 $\Delta = 33^\circ 07' 29.5142''$ (LT)
 $D = 16^\circ 22' 12.8018''$
 $R = 350.0000'$
 $T = 104.0897'$
 $L = 202.3483'$
 $E = 15.1502'$
 $e = \text{---}$
 $T.R. = \text{---}$
 $S.E. RUN = \text{---}$
 P.C. STA. = 36+02.2139
 P.T. STA. = 38+04.5622

PROPOSED
4' BITUMINOUS SHOULDER

CONSTRUCTION LIMITS
IMPROVEMENT ENDS
STA 78+65

EDNA MAE
SHEPHERD TRUST

CONSTANCE M
BROWN

KENNETH
REKENTHALER

- INLET AND PIPE PROTECTION
- TEMPORARY DITCH CHECK
- PERIMETER EROSION BARRIER

IMPROVEMENT ENDS
STA. 36+10

PROPOSED
4' AGGREGATE SHOULDER

CONSTRUCTION LIMITS

PROPOSED
4' BITUMINOUS SHOULDER

STA 39+50
52" PIPE CULV. CL A.
TY 1, 18"
= 786.06 - 786.36
SLOPE = 0.75%
2 PRC FL END SEC 18"

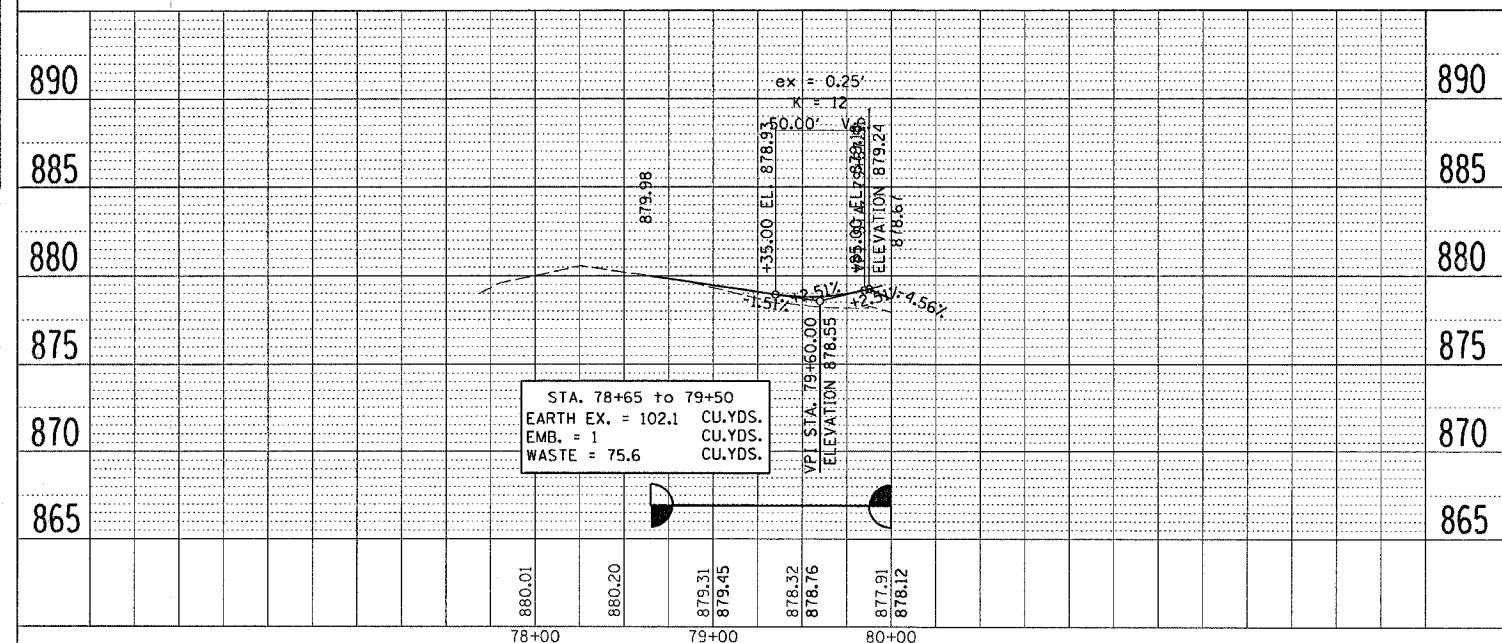
REMOVE
GUARDRAIL

STA 1002+60
REMOVE HEADWALLS
REMOVE EXISTING CULVERTS

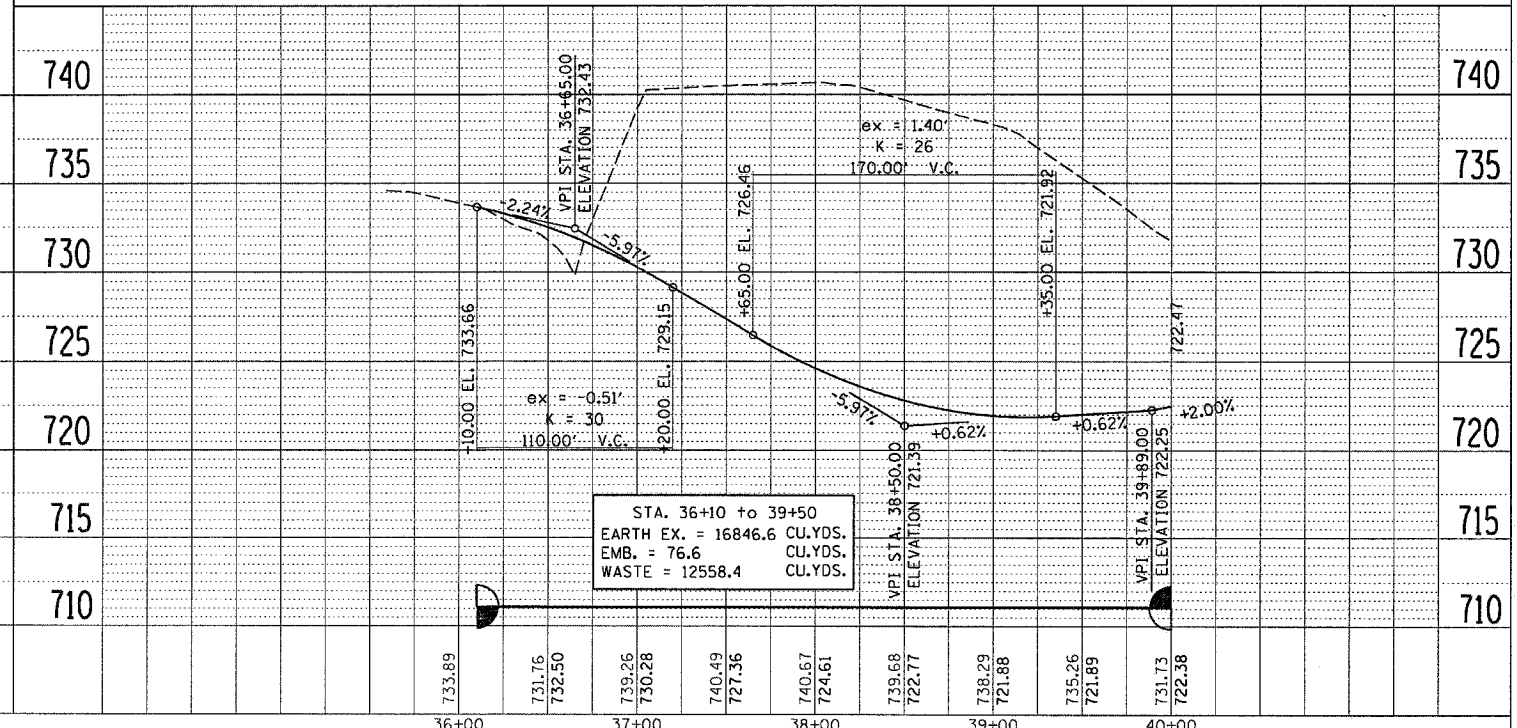
- INLET AND PIPE PROTECTION
- TEMPORARY DITCH CHECK
- PERIMETER EROSION BARRIER

PLAN	DATE	BY
DESIGNED		
CHECKED		
APPROVED		
FILE NO.		

PROFILE	DATE	BY
DESIGNED		
CHECKED		
APPROVED		
FILE NO.		



STA. 78+65 to 79+50
 EARTH EX. = 102.1 CU.YDS.
 EMB. = 1 CU.YDS.
 WASTE = 75.6 CU.YDS.



STA. 36+10 to 39+50
 EARTH EX. = 16846.6 CU.YDS.
 EMB. = 76.6 CU.YDS.
 WASTE = 12558.4 CU.YDS.

SEVEN HILLS RD./QUARRY ENTRANCE